



TRI STATE
COMMERCIAL®
REAL ESTATE EXPERTS



FOR LEASE | RETAIL SPACE

2,000-8,000 SF Retail Space for Lease in Williamsburg!

125 Borinquen Place, Brooklyn, NY 11211

Shlomi Bagdadi
718.437.6100
sb@tristatecr.com

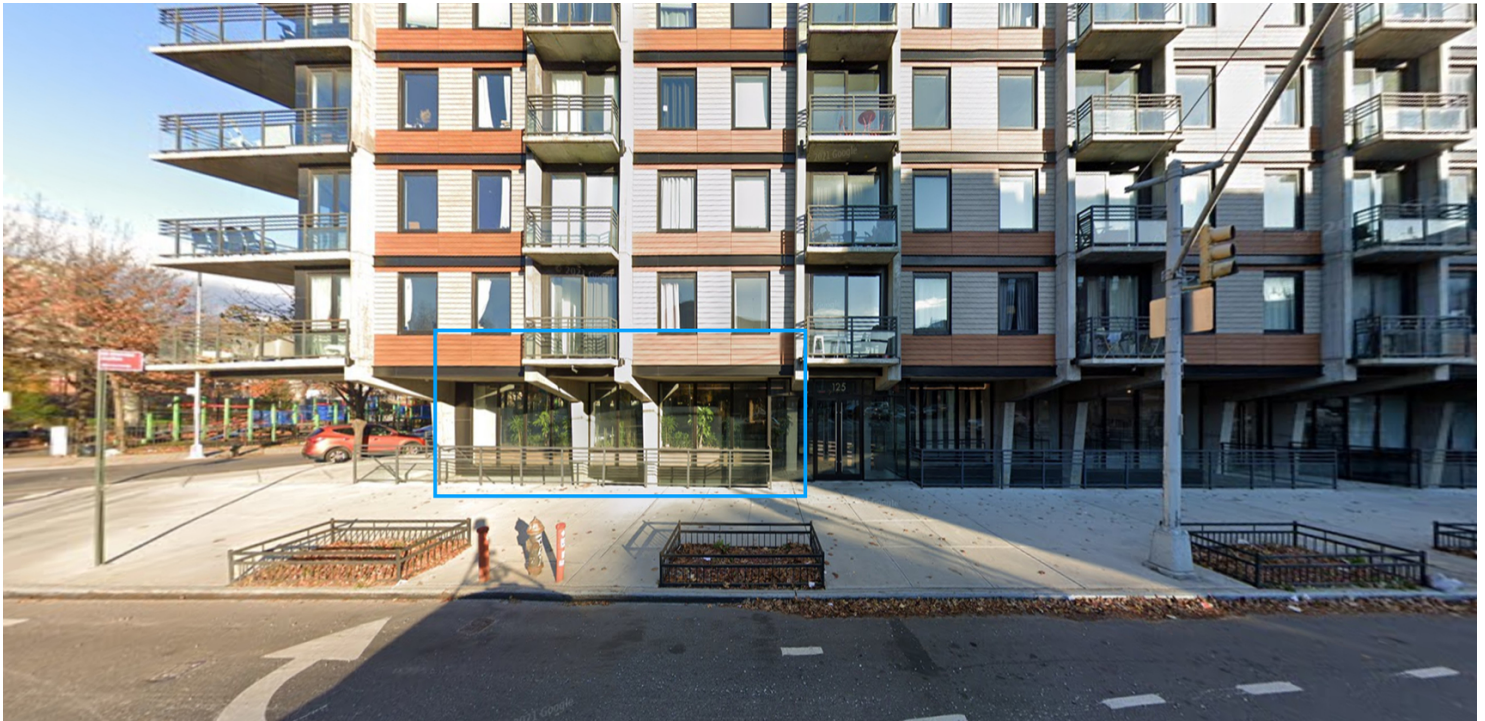
2,000-8,000 SF Retail Space for Lease in Williamsburg!

125 Borinquen Place, Brooklyn, NY 11211



**TRI STATE
COMMERCIAL**
REAL ESTATE EXPERTS

Executive Summary



OFFERING SUMMARY

Available SF: 2,000 - 8,000 SF

Lease Rate: Upon Request

Lot Size: 25,860 SF

Year Built: 2017

Building Size: 129,573 SF

Zoning: D6

Market: Williamsburg

PROPERTY OVERVIEW

2,000-8,000 SF Retail Space for Lease in Williamsburg!

Highlights:

- Lower level
- Natural light
- Great for art galleries, spas, doggy daycare, fitness, education, and more
- Residential on top
- Parking available

LOCATION OVERVIEW

Located in Williamsburg, short walk to the transit stop at Marcy Ave or Metropolitan Ave.

Public Transit: J, M & Z train at Marcy Ave; G & L train at Metropolitan Ave.

Nearby local tenants include,

- Flushing Bank, Think Coffee, Starbucks, Bank of America, Dime Community Bank, Capital One Bank, HSBC Bank Oslo Coffee, Apple Bank, Chase Bank, Blue Bottle Coffee, Whole Foods Market, CTown Supermarkets, Keyfood Supermarkets, Foodtown Supermarkets, Blink Fitness

Broker is relying on Landlord or other Landlord-supplied sources for the accuracy of said information and has no knowledge of the accuracy of it. Broker makes no representation and/or warranty, expressed or implied, as to the accuracy of such information.

Shlomi Bagdadi
718.437.6100
sb@tristatecr.com

Tri State Commercial® Realty // 148 39th st // Brooklyn, 11232 // <https://TriStateCR.com/>



2,000-8,000 SF Retail Space for Lease in Williamsburg!

125 Borinquen Place, Brooklyn, NY 11211



TRI STATE
COMMERCIAL[®]
REAL ESTATE EXPERTS

Location Maps



Broker is relying on Landlord or other Landlord-supplied sources for the accuracy of said information and has no knowledge of the accuracy of it. Broker makes no representation and/or warranty, expressed or implied, as to the accuracy of such information.

Shlomi Bagdadi
718.437.6100
sb@tristatecr.com

Tri State Commercial® Realty // 148 39th st // Brooklyn, 11232 // <https://TriStateCR.com/>



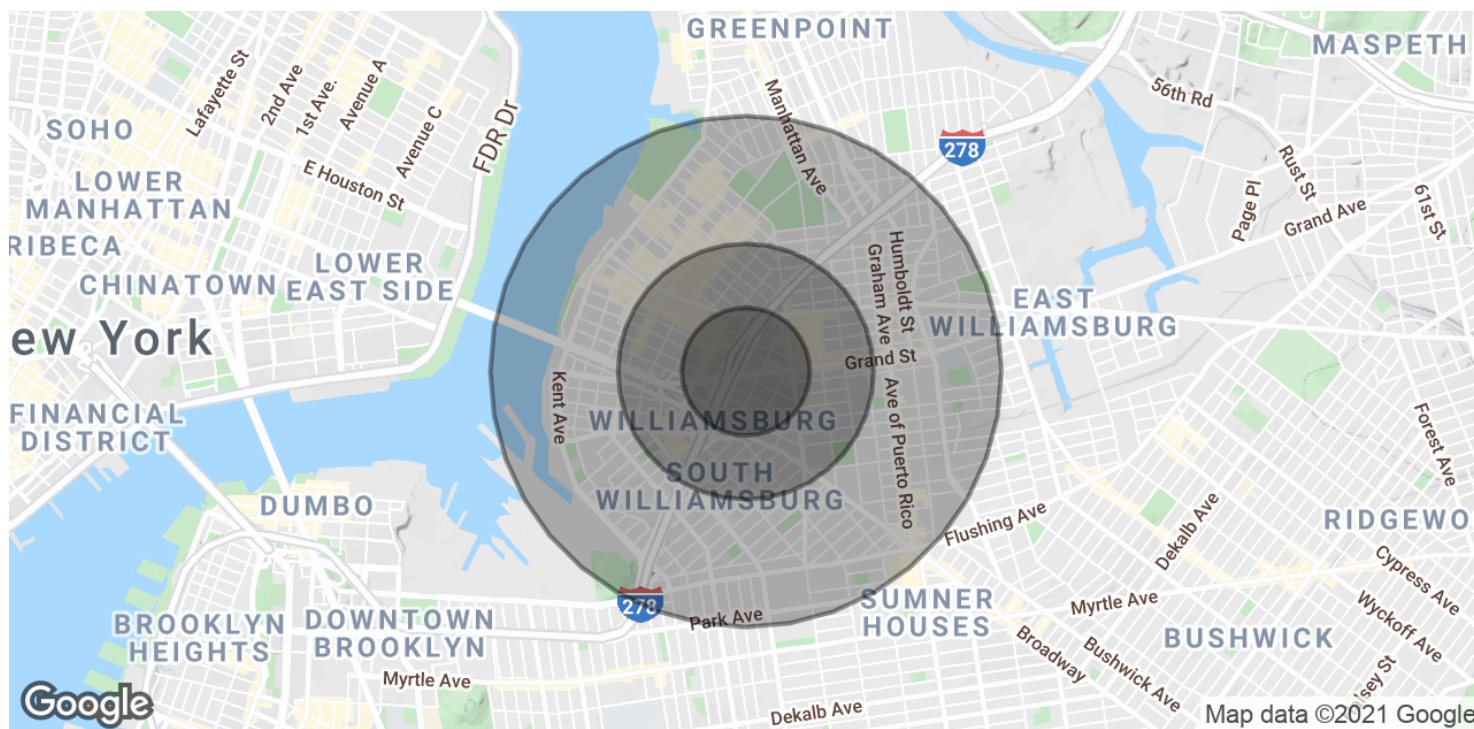
2,000-8,000 SF Retail Space for Lease in Williamsburg!

125 Borinquen Place, Brooklyn, NY 11211



**TRI STATE
COMMERCIAL**
REAL ESTATE EXPERTS

Demographics Map & Report



POPULATION

	0.25 MILES	0.5 MILES	1 MILE
Total Population	13,153	47,528	167,251
Average Age	30.0	28.3	26.4
Average Age (Male)	29.5	28.2	25.7
Average Age (Female)	30.7	28.7	27.4

HOUSEHOLDS & INCOME

	0.25 MILES	0.5 MILES	1 MILE
Total Households	5,018	17,693	58,535
# of Persons per HH	2.6	2.7	2.9
Average HH Income	\$52,342	\$52,326	\$53,280
Average House Value	\$664,839	\$769,767	\$709,413

* Demographic data derived from 2010 US Census

Broker is relying on Landlord or other Landlord-supplied sources for the accuracy of said information and has no knowledge of the accuracy of it. Broker makes no representation and/or warranty, expressed or implied, as to the accuracy of such information.

Shlomi Bagdadi
718.437.6100
sb@tristatecr.com

Tri State Commercial® Realty // 148 39th st // Brooklyn, 11232 // <https://TriStateCR.com/>



2,000-8,000 SF Retail Space for Lease in Williamsburg!

125 Borinquen Place, Brooklyn, NY 11211



TRI STATE
COMMERCIAL
REAL ESTATE EXPERTS

Retailer Map



Broker is relying on Landlord or other Landlord-supplied sources for the accuracy of said information and has no knowledge of the accuracy of it. Broker makes no representation and/or warranty, expressed or implied, as to the accuracy of such information.

Shlomi Bagdadi
718.437.6100
sb@tristatecr.com

Tri State Commercial® Realty // 148 39th st // Brooklyn, 11232 // <https://TriStateCR.com/>

