



TRI STATE
COMMERCIAL®
REAL ESTATE EXPERTS

A blue rectangular sign with the words "FOR LEASE" in white capital letters, positioned in front of the building's ground floor.

FOR LEASE | OFFICE SPACE

5,000 SF Built Out Office for lease in Bushwick!

358 Grove Street, Brooklyn, NY 11237

Shlomi Bagdadi
718.437.6100
sb@tristatecr.com

5,000 SF Built Out Office for lease in Bushwick!

358 Grove Street, Brooklyn, NY 11237



TRI STATE
COMMERCIAL®
REAL ESTATE EXPERTS

Executive Summary



OFFERING SUMMARY

Available SF: 5,000 SF

Lease Rate: Upon Request

Lot Size: 20,000 SF

Building Size: 49,867 SF

Zoning: R6

PROPERTY OVERVIEW

5,000 SF Built Out Office for lease in Bushwick!

Highlights:

- Built out office
- Ideal for Government agencies/ schools but not limited

LOCATION OVERVIEW

Located in Bushwick near the subway Myrtle-Wyckoff Ave & Knickerbocker Ave subway station

Public transits: L & M train at Myrtle-Wyckoff Avenues; M Train at Knickerbocker Ave.

Nearby local tenants includes:

- Santander Bank
- Capital One
- Starbucks
- Citibank
- Variety Coffee Roasters
- Milk & Pull
- Popular Bank
- TD Bank
- Dixeywood Saving Bank

Broker is relying on Landlord or other Landlord-supplied sources for the accuracy of said information and has no knowledge of the accuracy of it. Broker makes no representation and/or warranty, expressed or implied, as to the accuracy of such information.

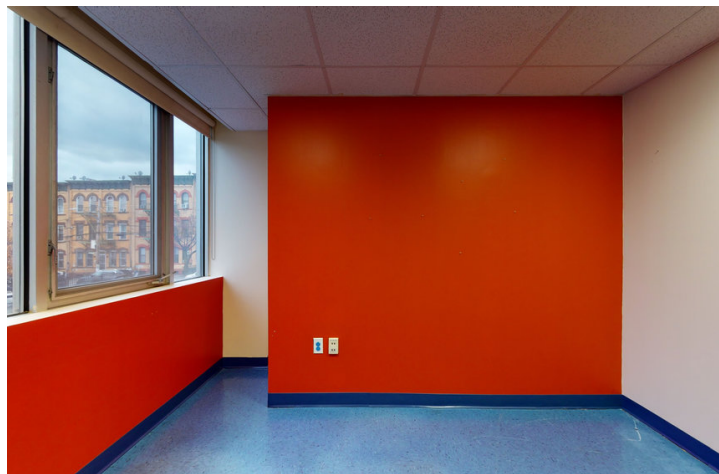


5,000 SF Built Out Office for lease in Bushwick!

358 Grove Street, Brooklyn, NY 11237



Additional Photos



Broker is relying on Landlord or other Landlord-supplied sources for the accuracy of said information and has no knowledge of the accuracy of it. Broker makes no representation and/or warranty, expressed or implied, as to the accuracy of such information.

Shlomi Bagdadi
718.437.6100
sb@tristatecr.com

Tri State Commercial® Realty // 482 Coney Island Ave // Brooklyn, 11218 // <http://tristatecr.com/>



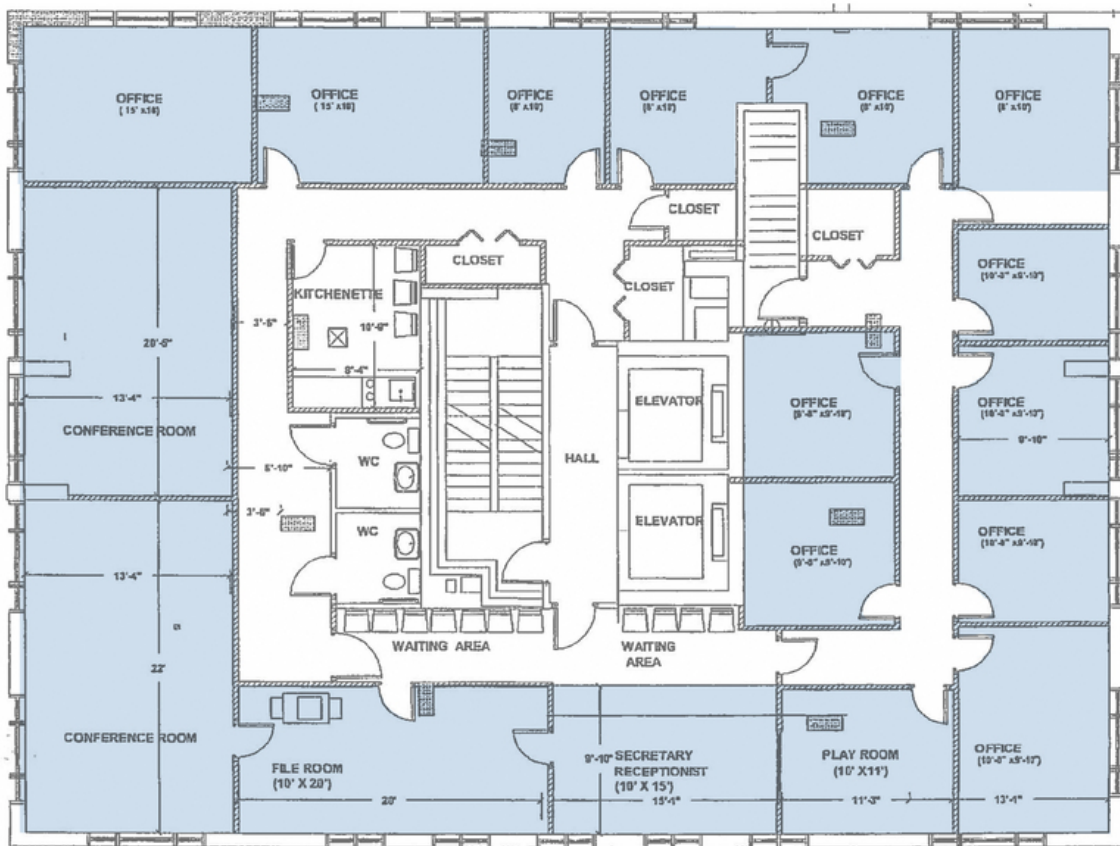
5,000 SF Built Out Office for lease in Bushwick!

358 Grove Street, Brooklyn, NY 11237



TRI STATE
COMMERCIAL®
REAL ESTATE EXPERTS

Floor plans



358 GROVE STREET
TOTAL AVAILABLE SPACE
5,000 SF

Broker is relying on Landlord or other Landlord-supplied sources for the accuracy of said information and has no knowledge of the accuracy of it. Broker makes no representation and/or warranty, expressed or implied, as to the accuracy of such information.

Shlomi Bagdadi
718.437.6100
sb@tristatecr.com

Tri State Commercial® Realty // 482 Coney Island Ave // Brooklyn, 11218 // <http://tristatecr.com/>



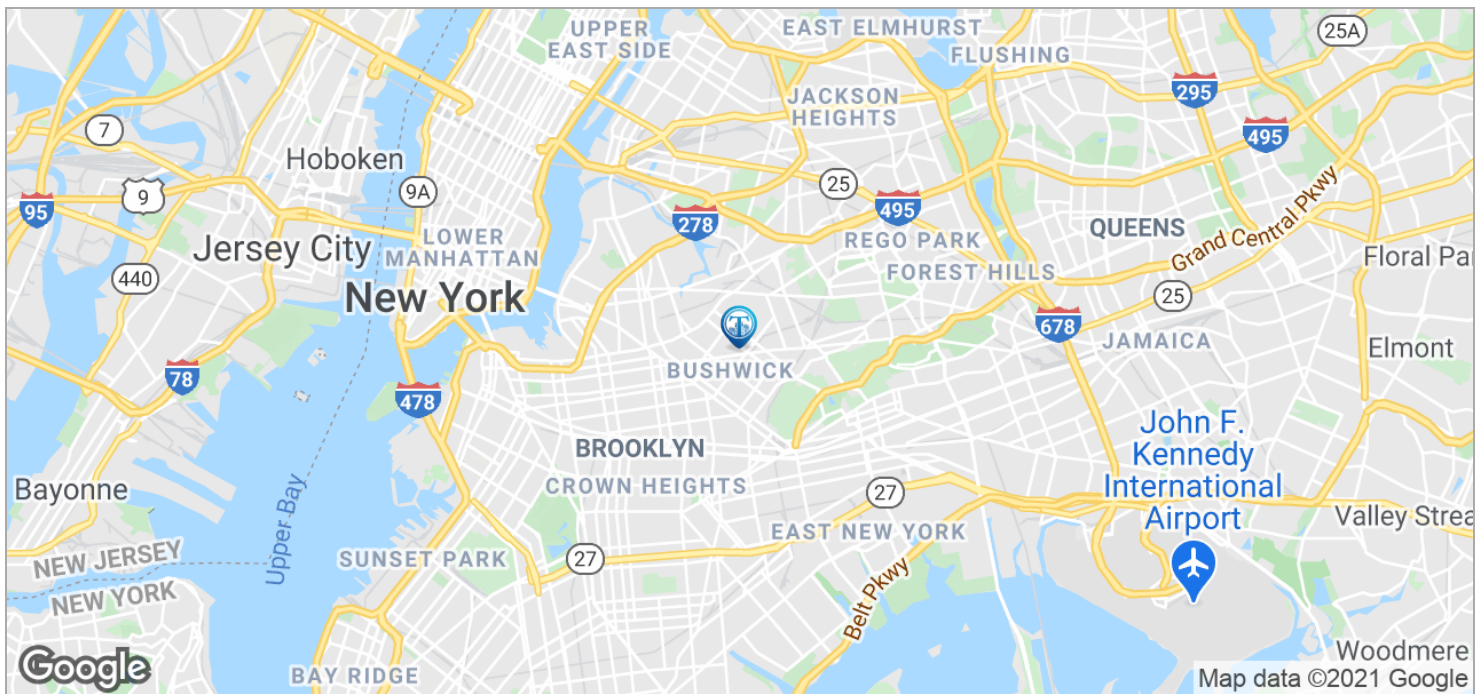
5,000 SF Built Out Office for lease in Bushwick!

358 Grove Street, Brooklyn, NY 11237



TRI STATE
COMMERCIAL[®]
REAL ESTATE EXPERTS

Location Maps



Broker is relying on Landlord or other Landlord-supplied sources for the accuracy of said information and has no knowledge of the accuracy of it. Broker makes no representation and/or warranty, expressed or implied, as to the accuracy of such information.

Shlomi Bagdadi
718.437.6100
sb@tristatecr.com

Tri State Commercial[®] Realty // 482 Coney Island Ave // Brooklyn, 11218 // <http://tristatecr.com/>



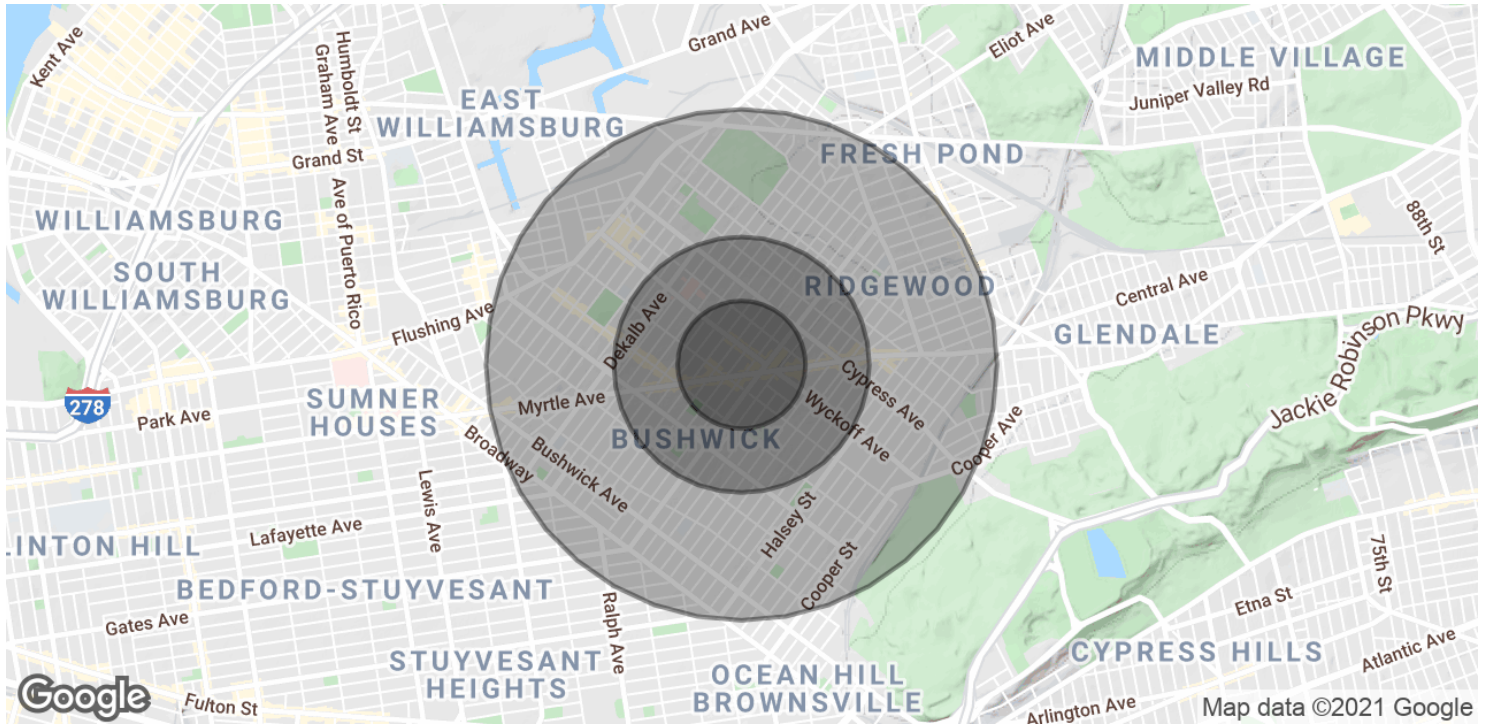
5,000 SF Built Out Office for lease in Bushwick!

358 Grove Street, Brooklyn, NY 11237



**TRI STATE
COMMERCIAL**
REAL ESTATE EXPERTS

Demographics Map & Report



POPULATION

	0.25 MILES	0.5 MILES	1 MILE
Total Population	16,910	61,898	183,124
Average age	29.0	29.0	30.2
Average age (Male)	27.4	27.5	29.0
Average age (Female)	30.6	30.6	31.7

HOUSEHOLDS & INCOME

	0.25 MILES	0.5 MILES	1 MILE
Total households	5,068	18,952	59,514
# of persons per HH	3.3	3.3	3.1
Average HH income	\$42,291	\$44,313	\$47,378
Average house value		\$566,658	\$616,202

* Demographic data derived from 2010 US Census

Broker is relying on Landlord or other Landlord-supplied sources for the accuracy of said information and has no knowledge of the accuracy of it. Broker makes no representation and/or warranty, expressed or implied, as to the accuracy of such information.

Shlomi Bagdadi
718.437.6100
sb@tristatecr.com

Tri State Commercial® Realty // 482 Coney Island Ave // Brooklyn, 11218 // <http://tristatecr.com/>



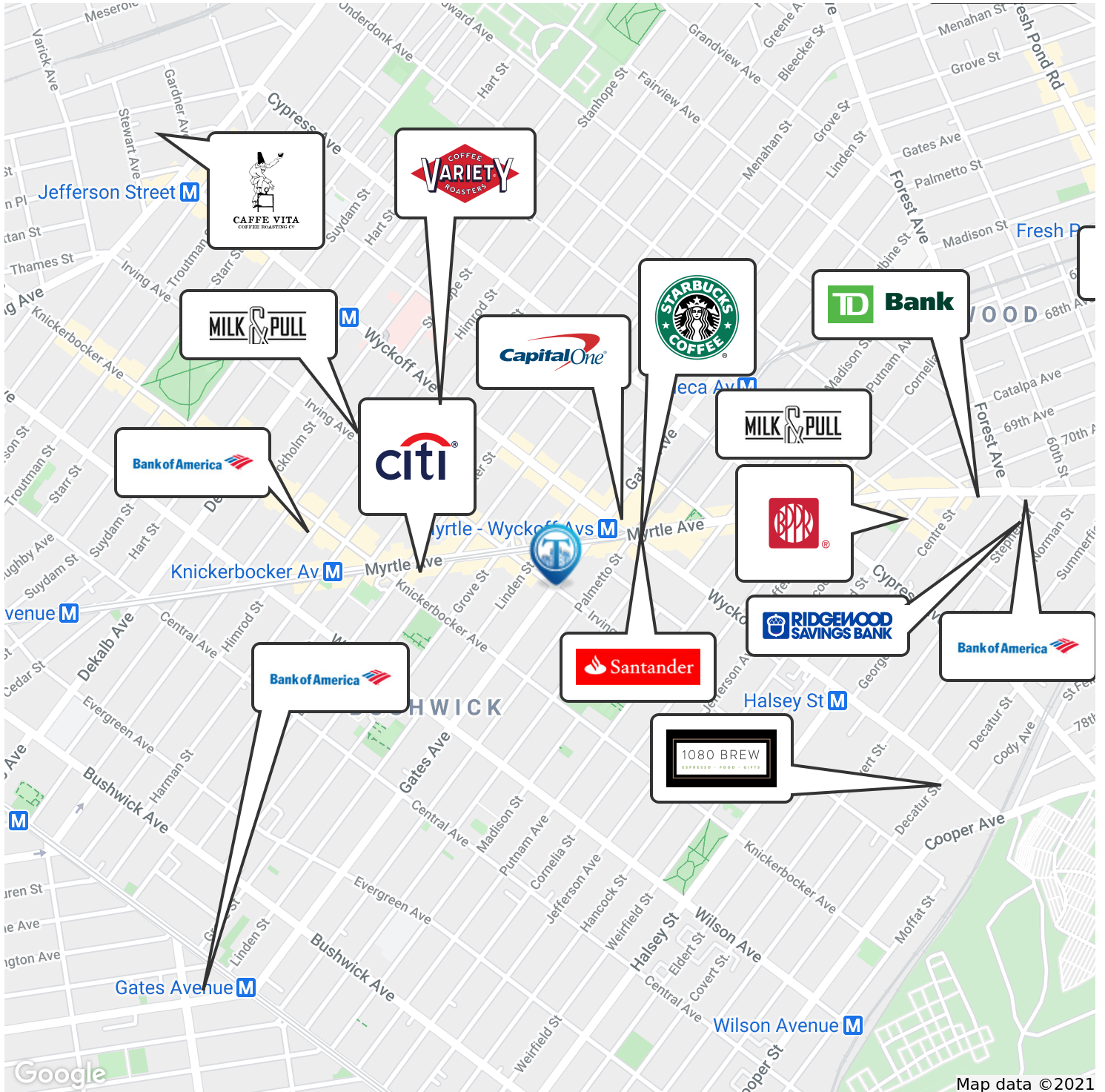
5,000 SF Built Out Office for lease in Bushwick!

358 Grove Street, Brooklyn, NY 11237



TRI STATE
COMMERCIAL®
REAL ESTATE EXPERTS

Retailer Map



Broker is relying on Landlord or other Landlord-supplied sources for the accuracy of said information and has no knowledge of the accuracy of it. Broker makes no representation and/or warranty, expressed or implied, as to the accuracy of such information.

Shlomi Bagdadi
718.437.6100
sb@tristatecr.com

Tri State Commercial® Realty // 482 Coney Island Ave // Brooklyn, 11218 // <http://tristatecr.com/>

