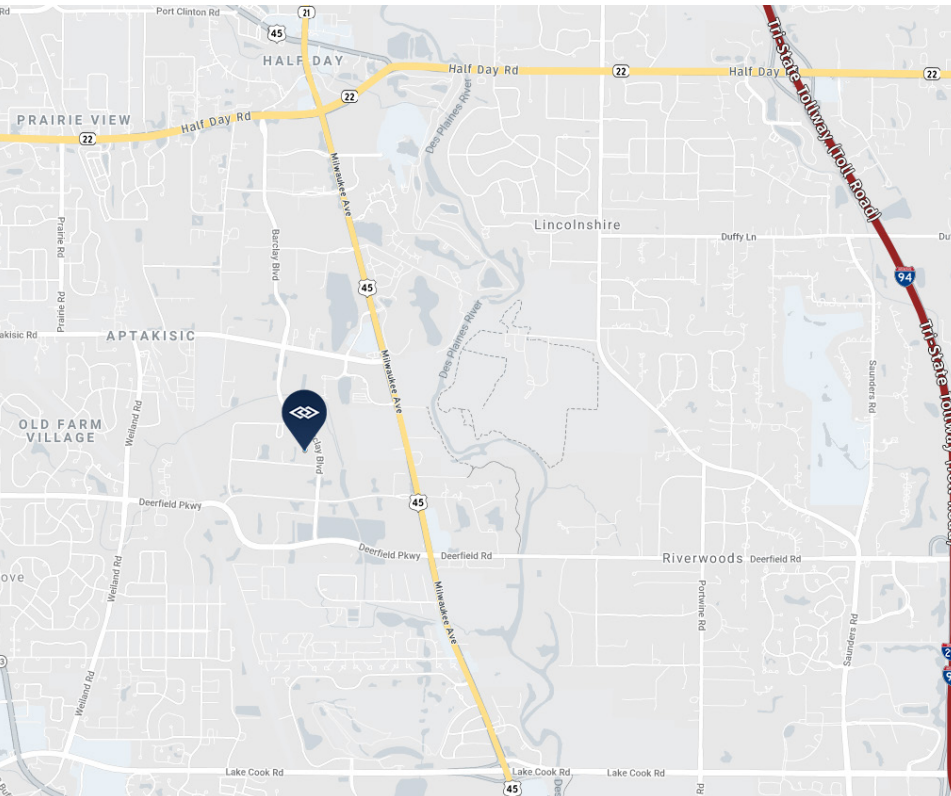


1290-1292 BARCLAY BOULEVARD

Buffalo Grove, IL



5,102 SF AVAILABLE FOR LEASE



BUILDING SPECIFICATIONS

BUILDING SIZE: 29,995 SF

AVAILABLE: 5,102 SF

POWER: 200 Amps 12/280 Volts
3-Phase

LOADING: 2 Common Docks

PARKING: 2.7 per 1,000 SF

SPRINKLER: Wet

LEASE RATE: \$9.25 psf Net (\$3,932.79)

TAXES: \$1.68 psf (\$714.28)

CAM: \$1.49 psf (\$633.50)

HIGHLIGHTS

- High image flex units with expandable warehouse space
- Available for immediate occupancy
- Recently renovated; move-in ready
- Professionally owned and managed
- Excellent business park environment



DARWIN

R E A L T Y

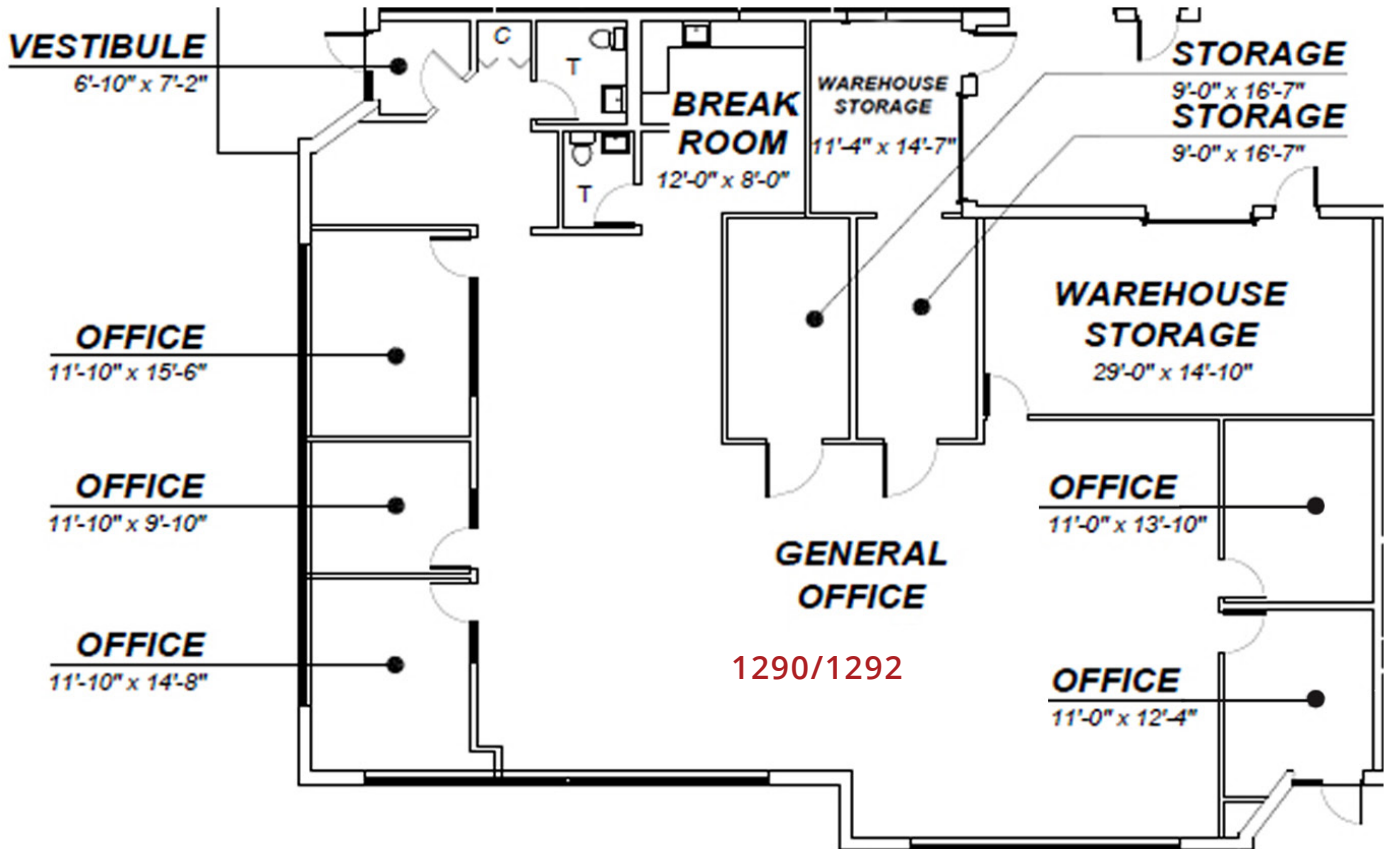
CORFAC International

970 N. Oaklawn Avenue
Suite 100
Elmhurst, IL 60126
Tel: 630-782-9520
www.darwinrealty.com

DAN PRENDERGAST

Broker

dprendergast@darwinrealty.com



DARWIN
R E A L T Y

CORFAC International

970 N. Oaklawn Avenue
Suite 100
Elmhurst, IL 60126
Tel: 630-782-9520
www.darwinrealty.com

DAN PRENDERGAST

Broker

dprendergast@darwinrealty.com