

# Class A Executive Office Suites for Sub-Lease

10820 Shawnee Mission Parkway,  
Shawnee, KS 66203



**8,525 - 17,694 SF of Class A Executive Office Space for Sub-Lease**  
**\$18.00 / SF Full Service – Highly Motivated / Bring Offers**

For more information, questions, or to schedule a tour of the property, please call Josh Haith



Josh Haith

Office: (913) 888-3456 x 7

Cell: (913) 515-1115

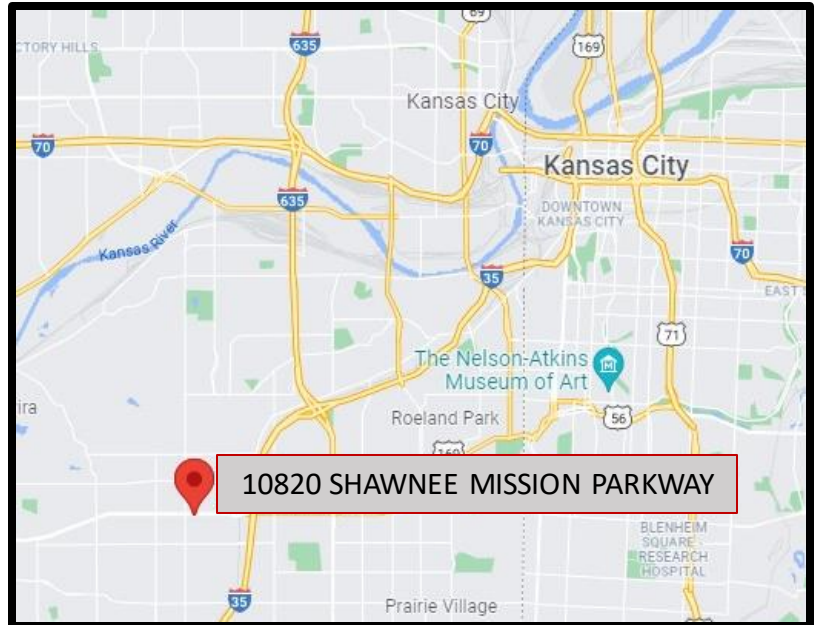
Email: Josh@Haith.com

Website: [www.HAITH.COM](http://www.HAITH.COM)

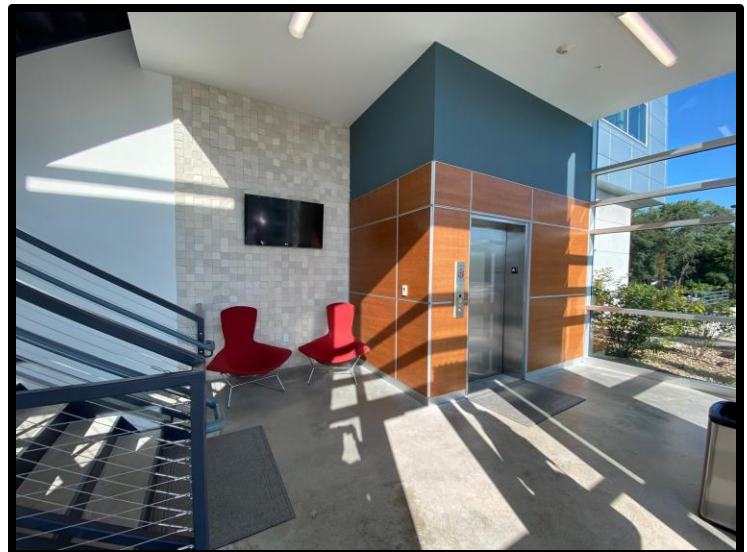
10820 Shawnee Mission Parkway,  
Shawnee, KS 66203

**8,525 – 17,694 SF Available**  
**Sub – Lease through 8/14/2025**  
**\$18.00 / SF Full Service**

- 8,525 SF on 3<sup>rd</sup> Floor
- 9,169 SF on 2<sup>nd</sup> Floor



- Fully Built Out – Built in 2019
- Highly Motivated Sub-Lessors – Bring Offers
- FF&E Negotiable
- Innovative Steel and Glass Window Design Wraps Entire Floor
- Building Signage – Whole Floor Available
- Heated, Underground Parking Garage with 18 Parking Spots and Outside Parking
- Entire 3<sup>rd</sup> Floor with Suites on 2<sup>nd</sup> Floor
- Private Break Rooms with Kitchen on Each Floor
- High End Finishes
- Private Restrooms
- Elevator from Garage to Each Floor
- Key Card Access in Place



10820 Shawnee Mission Parkway,  
Shawnee, KS 66203

