



For Lease  
±5,884 SF  
Medical Suite

The Perfect Location for Your New or Expanding Practice!

## Prosperity Gardens

11382 Prosperity Farms Road, Suite 228-229-230  
Palm Beach Gardens, FL 33410

### Property Features

- Fully built-out second floor medical space with multiple suite entries for doctor and patient privacy
- Meticulously maintained with outstanding finishes
- Just 1.5 miles to Palm Beach Gardens Medical Center and 8 miles to Jupiter Medical Center
- Prestigious location with a dynamic local economy and demographics
- Ample free parking for patients and staff
- Adjacent to two plazas offering numerous shopping, dining and banking options
- Minutes from The Gardens Mall, Downtown Palm Beach Gardens and Legacy Place

### Key Features:



Only 200 yards  
to PGA Blvd



Improvement & rental  
concessions available



Fully built-out  
medical space



Easy access to  
local hospitals

For more information

**Jason L. Sundook, SIOR**

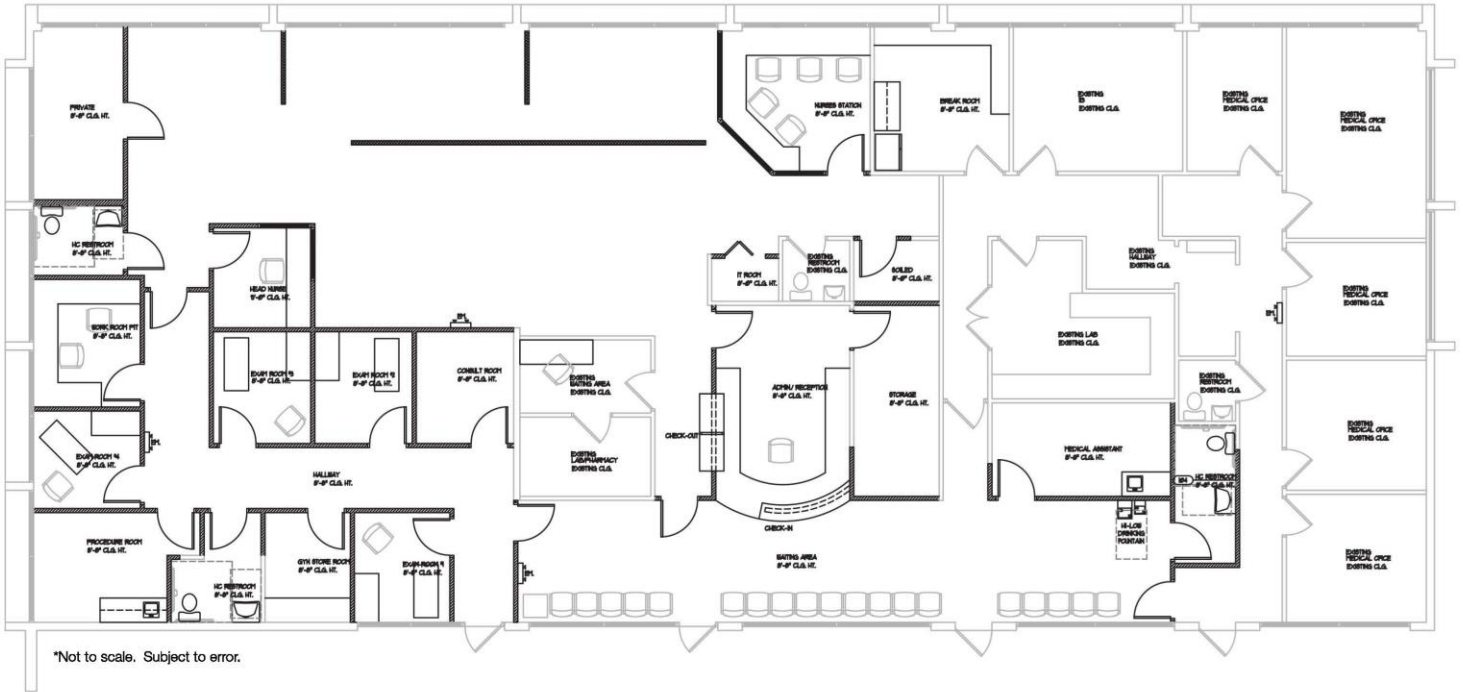
Principal | [jsundook@mhcreal.com](mailto:jsundook@mhcreal.com)



**FOR LEASE: PROSPERITY GARDENS**

**±5,884 SF Fully Built-Out Medical Office**

**11382 PROSPERITY FARMS RD, PALM BEACH GARDENS**



\*Not to scale. Subject to error.

**CURRENTLY USED FOR CANCER TREATMENT  
and PERFECT FOR MEDSPA USE**



**FOR MORE INFORMATION:**

**Jason L. Sundook, SIOR, Principal**  
561 471 8000 | [jsundook@mhcreal.com](mailto:jsundook@mhcreal.com)

NO WARRANTY OR REPRESENTATION, EXPRESS OR IMPLIED, IS MADE AS TO THE ACCURACY OF THE INFORMATION CONTAINED HEREIN, AND THE SAME IS SUBMITTED SUBJECT TO ERRORS, OMISSIONS, CHANGE OF PRICE, OR WITHDRAWAL WITHOUT NOTICE.

