

EST



1880

CHURCH STREET

MARKET HOUSE

NAI Emory Hill

THE BOROUGH'S NEW CREATIVE OASIS

IN THE HEART OF DOWNTOWN HISTORIC WEST CHESTER

A revitalized 19th Century red-brick marketplace, the open atrium brilliantly captures natural light, and sets the stage for a unique daily workplace environment.

Located in the heart of downtown West Chester, PA, Church Street Market House was established to meet the needs of individuals and companies most sizes. This is the ideal location for those looking for personal and team workspaces with the amenities and flexibility that you need.



+/- 16,800 SF BUILDING

CREATIVE OFFICE COMPLEX



Fully-furnished personal offices.



AC/Heat & Electric Included



High-Speed Internet Included



Printer Access



Mail and Package Handling



Will feature a cafe service that will serve Church Street Market House and The Surrounding Community

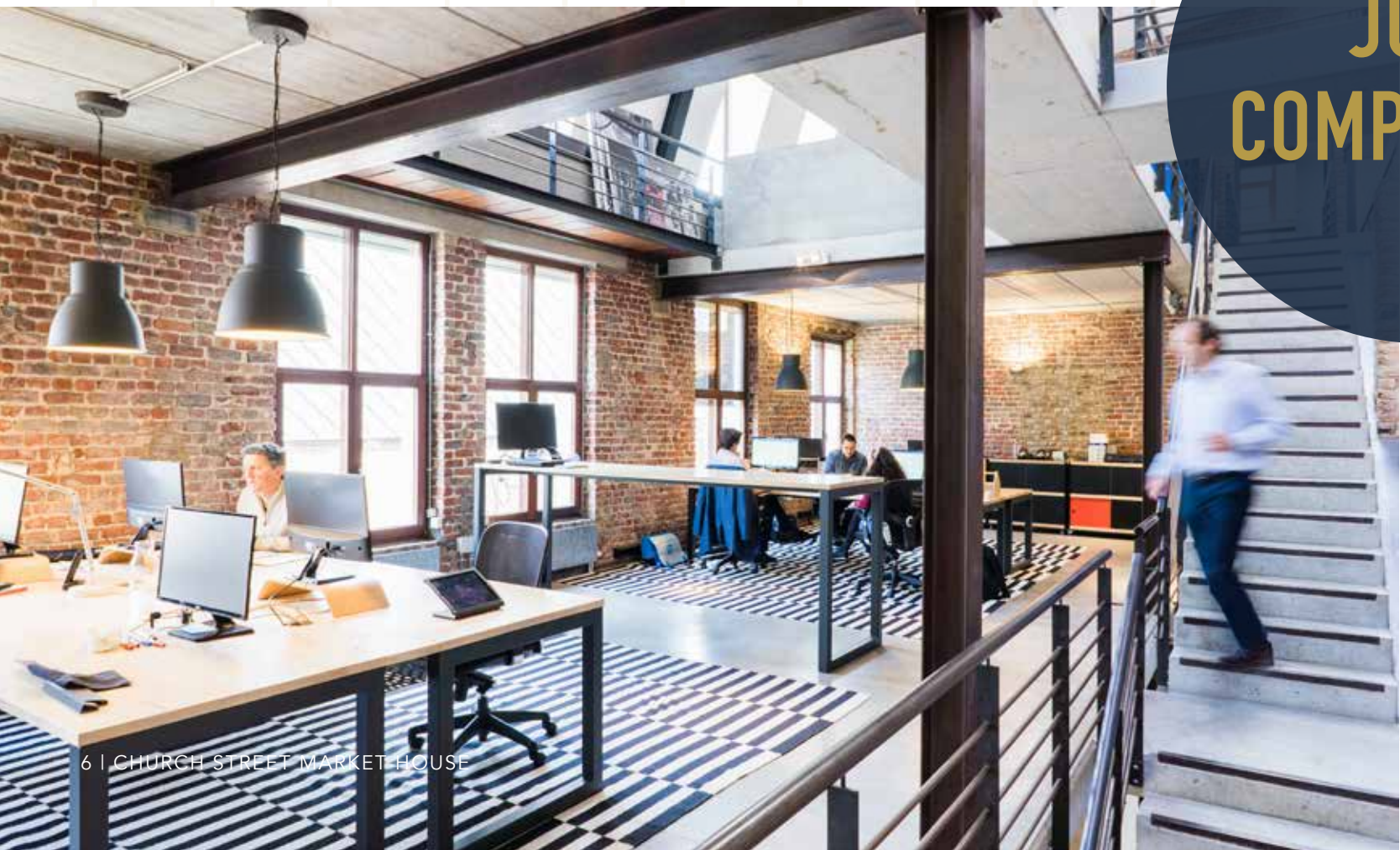


MOVE-IN READY SUITES

Church Street Market House offers private, affordable office spaces ranging from 200 to 5,000 square feet in a variety of floor plans.

Available in adaptable layouts to handle both collaborative meetings and private workstations.

JUST COMPLETED!



PRIME RETAIL OPPORTUNITY

+/- 1,400 SF of Prime Retail



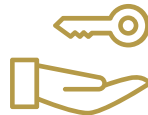
Heavy Traffic- car counts & foot traffic



Outdoor seating spacing available.



Access to service entire building including office & community members.



TI Packages are available for qualified Tenants

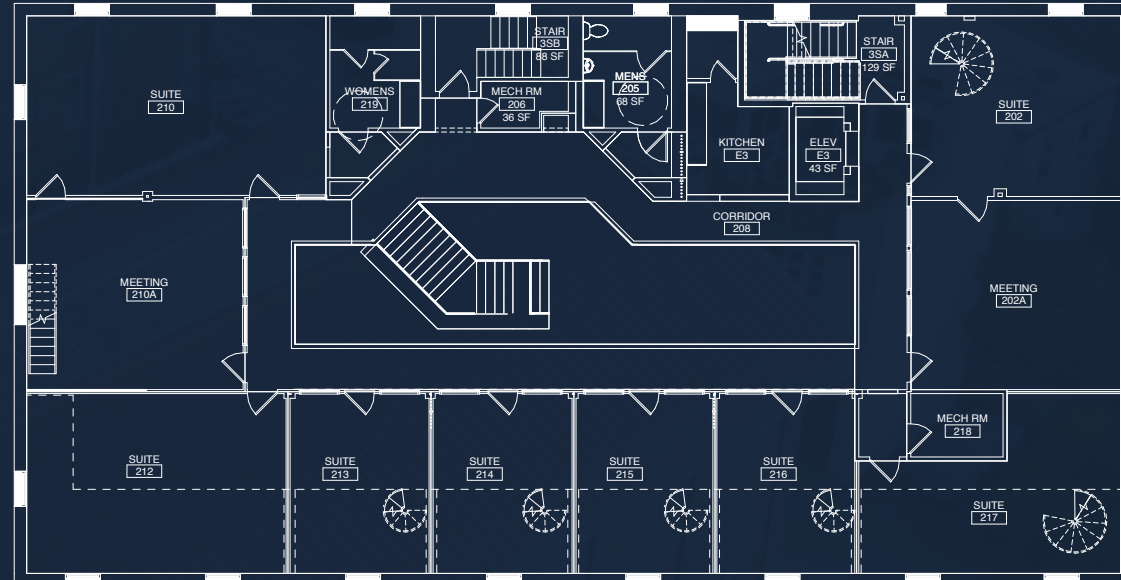
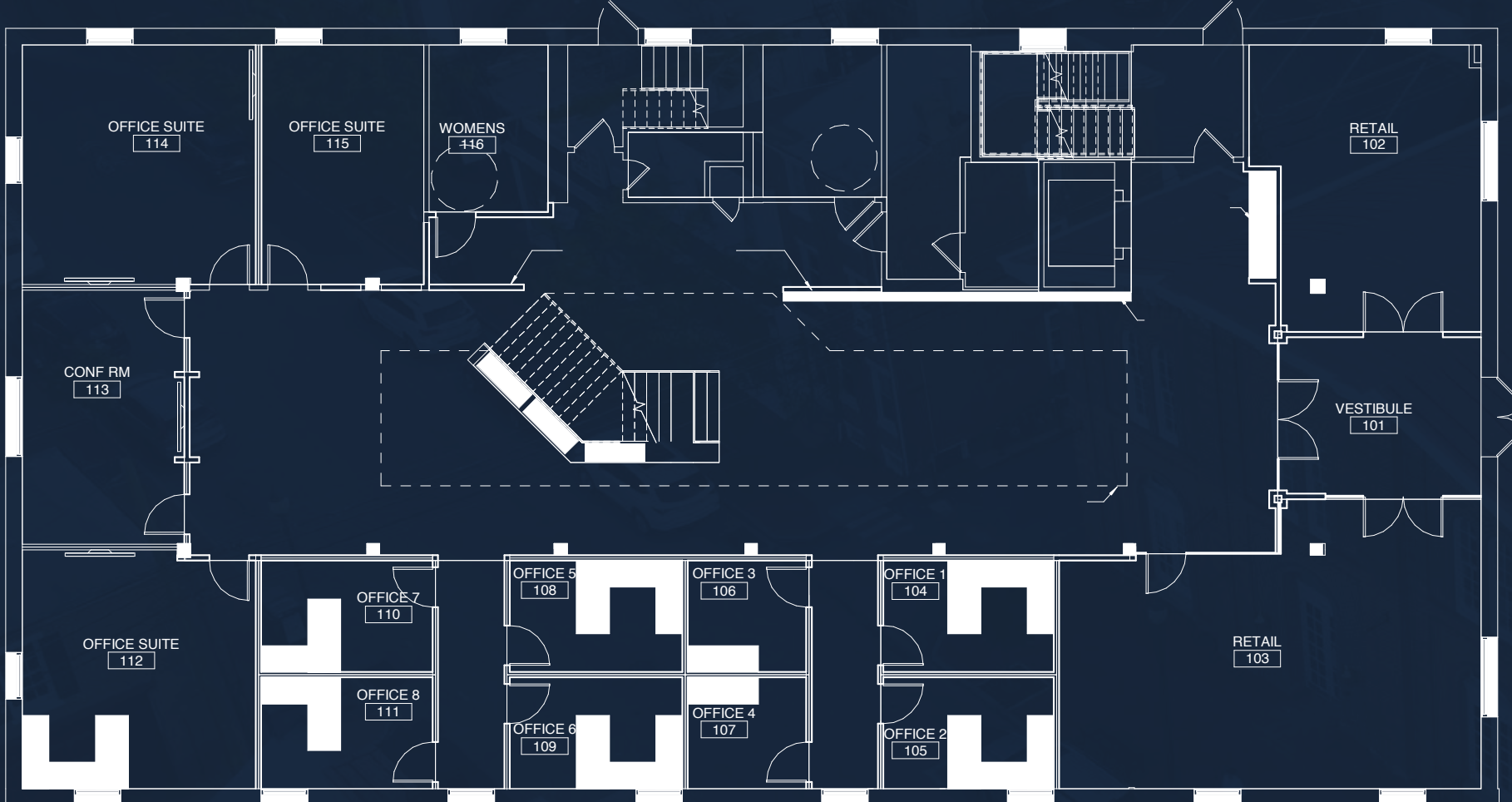


PRIME RETAIL SPACE AVAILABLE!



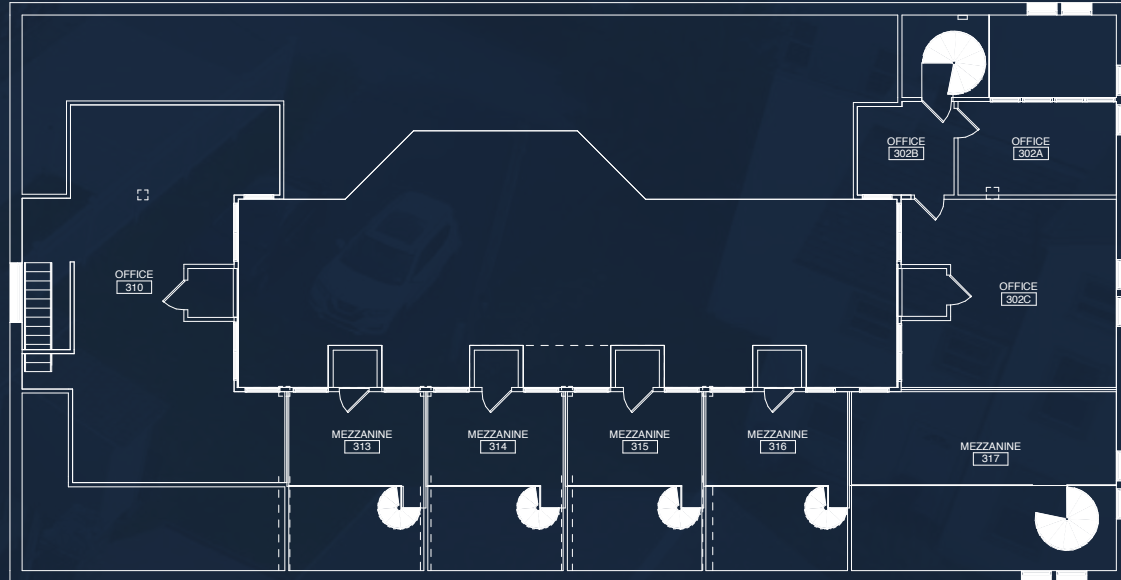
FLOOR PLAN LAYOUT

FIRST FLOOR



SECOND FLOOR


THIRD FLOOR




IN THE HEART OF IT ALL

DEMOGRAPHICS

	1 mile	3 mile	5 mile
Population	23,111	57,661	110,836
Households	8,076	20,621	41,255
AVG HH Income	\$80,179	\$110,578	\$121,776

 Downtown West Chester Hosts 26 Events a year

 525 Businesses in Downtown West Chester

 There are 2,700 parking spaces in Downtown West Chester



DOWNTOWN WEST CHESTER

WORK. LIVE. PLAY.

CASUAL DINING



FINE DINING



FITNESS



COFFEE





TIM PLEMMONS

302.221.7255

tplemmons@emoryhill.com

NAI Emory Hill