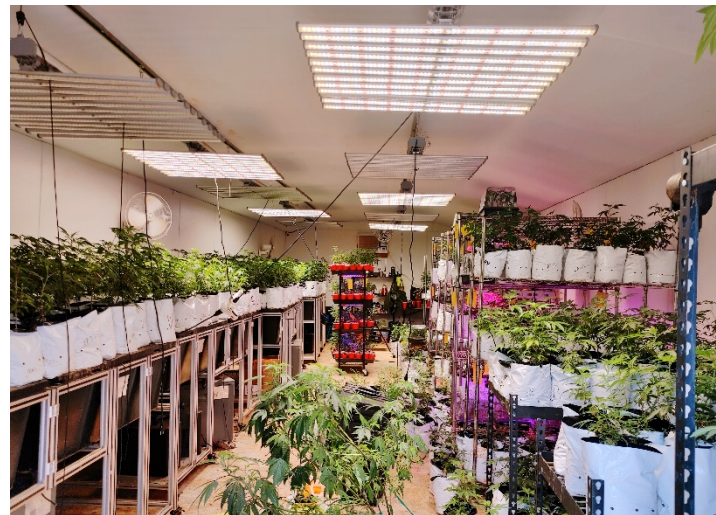




Macomb, Oklahoma 74852

PROPERTY HIGHLIGHTS

- (4) 24' x 100' Greenhouses Equipped with 6 LEDs, Additional Supplemental Lighting, 6 HAF Fans, 2 Large Exhaust Fans and a Wet Wall
- (1) 30' x 80' Greenhouse with Metal Front Ends and Concrete Floors 4 LEDs, Supplemental Lighting, 2 Large Exhaust Fans, Dehumidifier and Wet Walls
- (1) Clone Room 16' x 40' 10 LEDs, Insulated with A/C and Clone Racks
- Cameras in Each of the Greenhouses and Common Areas
- (1) 8' x 10' Insulated Water House for Storage of Nutrients or anything buyer sees fit
- Couple Outbuildings Previous Owner Used to Store Farm Equipment
- (1) 30' x 36' Dry Room with Dehumidifiers and A/C
- 2 Bedroom / 1 Bath Mobile Home
- No Restrictions
- 400 Amps Single Phase Power
- 3 Phase Available
- 1 Hour Southeast of OKC



TOTAL SF	7,828 SF
TOTAL ACRES	15 Acres
YEAR BUILT / RENOVATED	1960/2021
ZONED	AG

NO WARRANTY OR REPRESENTATION, EXPRESS OR IMPLIED, IS MADE AS TO THE ACCURACY OF THE INFORMATION CONTAINED HEREIN, AND THE SAME IS SUBMITTED SUBJECT TO ERRORS, OMISSIONS, CHANGE OF PRICE, RENTAL OR OTHER CONDITIONS, PRIOR SALE, LEASE OR FINANCING, OR WITHDRAWAL WITHOUT NOTICE, AND OF ANY SPECIAL LISTING CONDITIONS IMPOSED BY OUR PRINCIPALS NO WARRANTIES OR REPRESENTATIONS ARE MADE AS TO THE CONDITION OF THE PROPERTY OR ANY HAZARDS CONTAINED THEREIN ARE ANY TO BE IMPLIED.

Krystal Deak
+1 580 512 3631
krystal@naisullivangroup.com

4045 N.W. 64th Street, Suite 340
Oklahoma City, OK 73116
www.naisullivangroup.com

+1 405 840 0600 OFFICE
+1 405 840 0610 FAX



NO WARRANTY OR REPRESENTATION, EXPRESS OR IMPLIED, IS MADE AS TO THE ACCURACY OF THE INFORMATION CONTAINED HEREIN, AND THE SAME IS SUBMITTED SUBJECT TO ERRORS, OMISSIONS, CHANGE OF PRICE, RENTAL OR OTHER CONDITIONS, PRIOR SALE, LEASE OR FINANCING, OR WITHDRAWAL WITHOUT NOTICE, AND OF ANY SPECIAL LISTING CONDITIONS IMPOSED BY OUR PRINCIPALS NO WARRANTIES OR REPRESENTATIONS ARE MADE AS TO THE CONDITION OF THE PROPERTY OR ANY HAZARDS CONTAINED THEREIN ARE ANY TO BE IMPLIED.

Krystal Deak
+1 580 512 3631
krystal@naisullivangroup.com

4045 N.W. 64th Street, Suite 340
Oklahoma City, OK 73116
www.naisullivangroup.com

+1 405 840 0600 OFFICE
+1 405 840 0610 FAX