



## 315 Beemer Road

Guthrie, Oklahoma 73044

### PROPERTY HIGHLIGHTS

- UNINCORPORATED GUTHRIE
- LOGAN COUNTY
- Grow License Available
- Processing License Available
- 5.45 Total Acres/1.5 Acres Fenced
- (1) 2,400 SF Metal Building
- (3) 20' x 100' Greenhouses
- (1) 35' x 106' Greenhouse
- (1) 8' x 40' Steel Storage Container
- (1) 7' x 5' Shed
- 3 Phase Power
- 15 Cameras with 24 Hour Surveillance
- 4 Trailer Mounted Generators 1 Gas Generator



TOTAL SF	12,430 SF
TOTAL ACRES	5.45 Acres
YEAR BUILT / RENOVATED	2021
ZONED	NONE

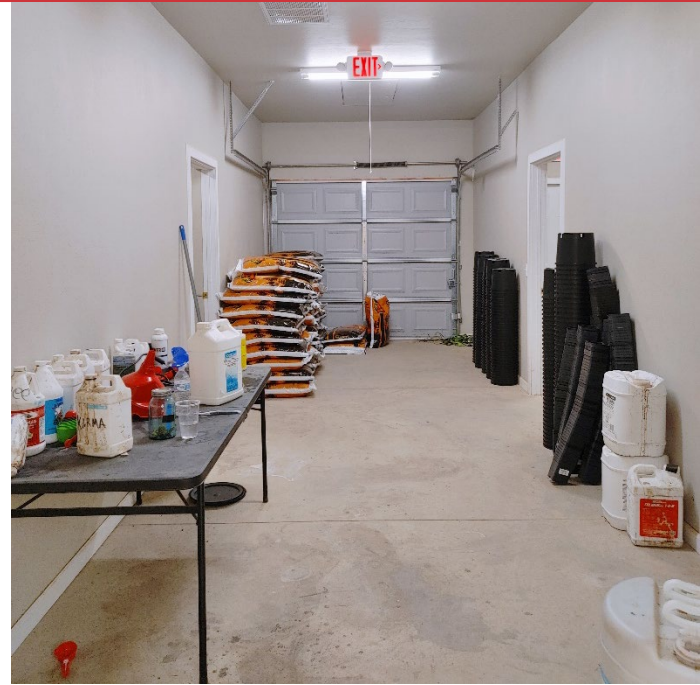
NO WARRANTY OR REPRESENTATION, EXPRESS OR IMPLIED, IS MADE AS TO THE ACCURACY OF THE INFORMATION CONTAINED HEREIN, AND THE SAME IS SUBMITTED SUBJECT TO ERRORS, OMISSIONS, CHANGE OF PRICE, RENTAL OR OTHER CONDITIONS, PRIOR SALE, LEASE OR FINANCING, OR WITHDRAWAL WITHOUT NOTICE, AND OF ANY SPECIAL LISTING CONDITIONS IMPOSED BY OUR PRINCIPALS NO WARRANTIES OR REPRESENTATIONS ARE MADE AS TO THE CONDITION OF THE PROPERTY OR ANY HAZARDS CONTAINED THEREIN ARE ANY TO BE IMPLIED.

**Krystal Deak**  
+1 580 512 3631  
krystal@naisullivangroup.com

4045 N.W. 64<sup>th</sup> Street, Suite 340  
Oklahoma City, OK 73116  
[www.naisullivangroup.com](http://www.naisullivangroup.com)

**+1 405 840 0600 OFFICE**  
**+1 405 840 0610 FAX**





NO WARRANTY OR REPRESENTATION, EXPRESS OR IMPLIED, IS MADE AS TO THE ACCURACY OF THE INFORMATION CONTAINED HEREIN, AND THE SAME IS SUBMITTED SUBJECT TO ERRORS, OMISSIONS, CHANGE OF PRICE, RENTAL OR OTHER CONDITIONS, PRIOR SALE, LEASE OR FINANCING, OR WITHDRAWAL WITHOUT NOTICE, AND OF ANY SPECIAL LISTING CONDITIONS IMPOSED BY OUR PRINCIPALS. NO WARRANTIES OR REPRESENTATIONS ARE MADE AS TO THE CONDITION OF THE PROPERTY OR ANY HAZARDS CONTAINED THEREIN ARE ANY TO BE IMPLIED.

**Krystal Deak**

**+1 580 512 3631**

**[krystal@naisullivangroup.com](mailto:krystal@naisullivangroup.com)**

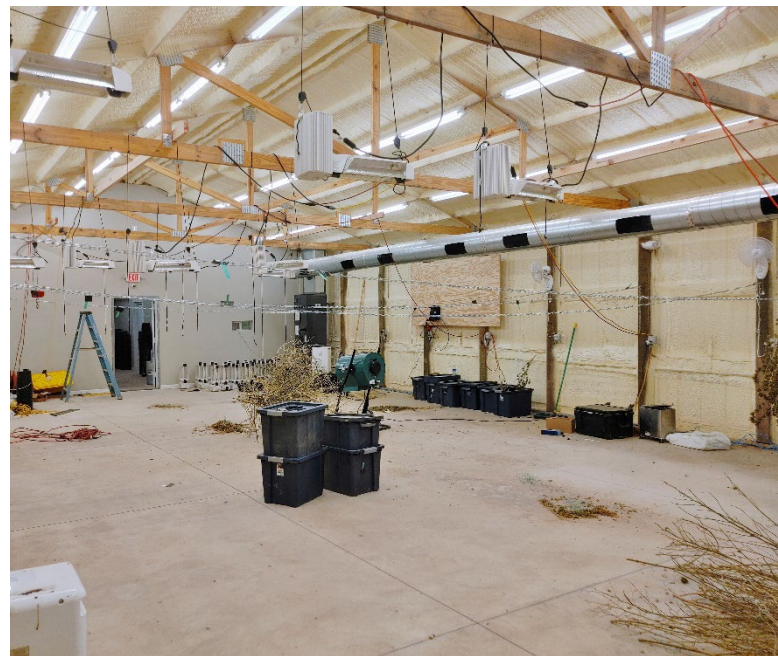
4045 N.W. 64<sup>th</sup> Street, Suite 340  
Oklahoma City, OK 73116

**[www.naisullivangroup.com](http://www.naisullivangroup.com)**

**+1 405 840 0600 OFFICE**

**+1 405 840 0610 FAX**





NO WARRANTY OR REPRESENTATION, EXPRESS OR IMPLIED, IS MADE AS TO THE ACCURACY OF THE INFORMATION CONTAINED HEREIN, AND THE SAME IS SUBMITTED SUBJECT TO ERRORS, OMISSIONS, CHANGE OF PRICE, RENTAL OR OTHER CONDITIONS, PRIOR SALE, LEASE OR FINANCING, OR WITHDRAWAL WITHOUT NOTICE, AND OF ANY SPECIAL LISTING CONDITIONS IMPOSED BY OUR PRINCIPALS. NO WARRANTIES OR REPRESENTATIONS ARE MADE AS TO THE CONDITION OF THE PROPERTY OR ANY HAZARDS CONTAINED THEREIN ARE ANY TO BE IMPLIED.

**Krystal Deak**  
+1 580 512 3631  
[krystal@naisullivangroup.com](mailto:krystal@naisullivangroup.com)

4045 N.W. 64<sup>th</sup> Street, Suite 340  
Oklahoma City, OK 73116  
[www.naisullivangroup.com](http://www.naisullivangroup.com)

**+1 405 840 0600 OFFICE**  
**+1 405 840 0610 FAX**





Population	1 Mile: 3,677	3 Miles: 10,573	5 Miles: 14,294
Average Household Income	1 Mile: \$66,936	3 Miles: \$60,002	5 Miles: \$66,286
Total Households	1 Mile: 1,513	3 Miles: 4,108	5 Miles: 5,520

NO WARRANTY OR REPRESENTATION, EXPRESS OR IMPLIED, IS MADE AS TO THE ACCURACY OF THE INFORMATION CONTAINED HEREIN, AND THE SAME IS SUBMITTED SUBJECT TO ERRORS, OMISSIONS, CHANGE OF PRICE, RENTAL OR OTHER CONDITIONS, PRIOR SALE, LEASE OR FINANCING, OR WITHDRAWAL WITHOUT NOTICE, AND OF ANY SPECIAL LISTING CONDITIONS IMPOSED BY OUR PRINCIPALS NO WARRANTIES OR REPRESENTATIONS ARE MADE AS TO THE CONDITION OF THE PROPERTY OR ANY HAZARDS CONTAINED THEREIN ARE ANY TO BE IMPLIED.

**Krystal Deak**  
+1 580 512 3631  
krystal@naisullivangroup.com

4045 N.W. 64<sup>th</sup> Street, Suite 340  
Oklahoma City, OK 73116  
[www.naisullivangroup.com](http://www.naisullivangroup.com)

**+1 405 840 0600 OFFICE**  
**+1 405 840 0610 FAX**