

# 1022 E 52nd Street

Indianapolis, IN 46220



## Office

13,693 SF

### PROPERTY HIGHLIGHTS

- Rare South Broad Ripple office opportunity
- The space is comprised of perimeter offices, conference rooms, and open office
- Possible plug and play
- Ample free parking



### LOCATION DESCRIPTION

Located on the Monon Trail

Within walking distance to area restaurants and retail

**Mike Short**  
Director  
Mike@alopg.com  
C: 317.800.4664

ALO Property Group  
9075 N. Meridian St., Ste. 175  
Indianapolis, IN 46260  
O: 317.853.7500  
www.alopg.com



# 1022 E 52nd Street

Indianapolis, IN 46220

Property Photos



Mike Short  
Director  
Mike@alopg.com  
C: 317.800.4664

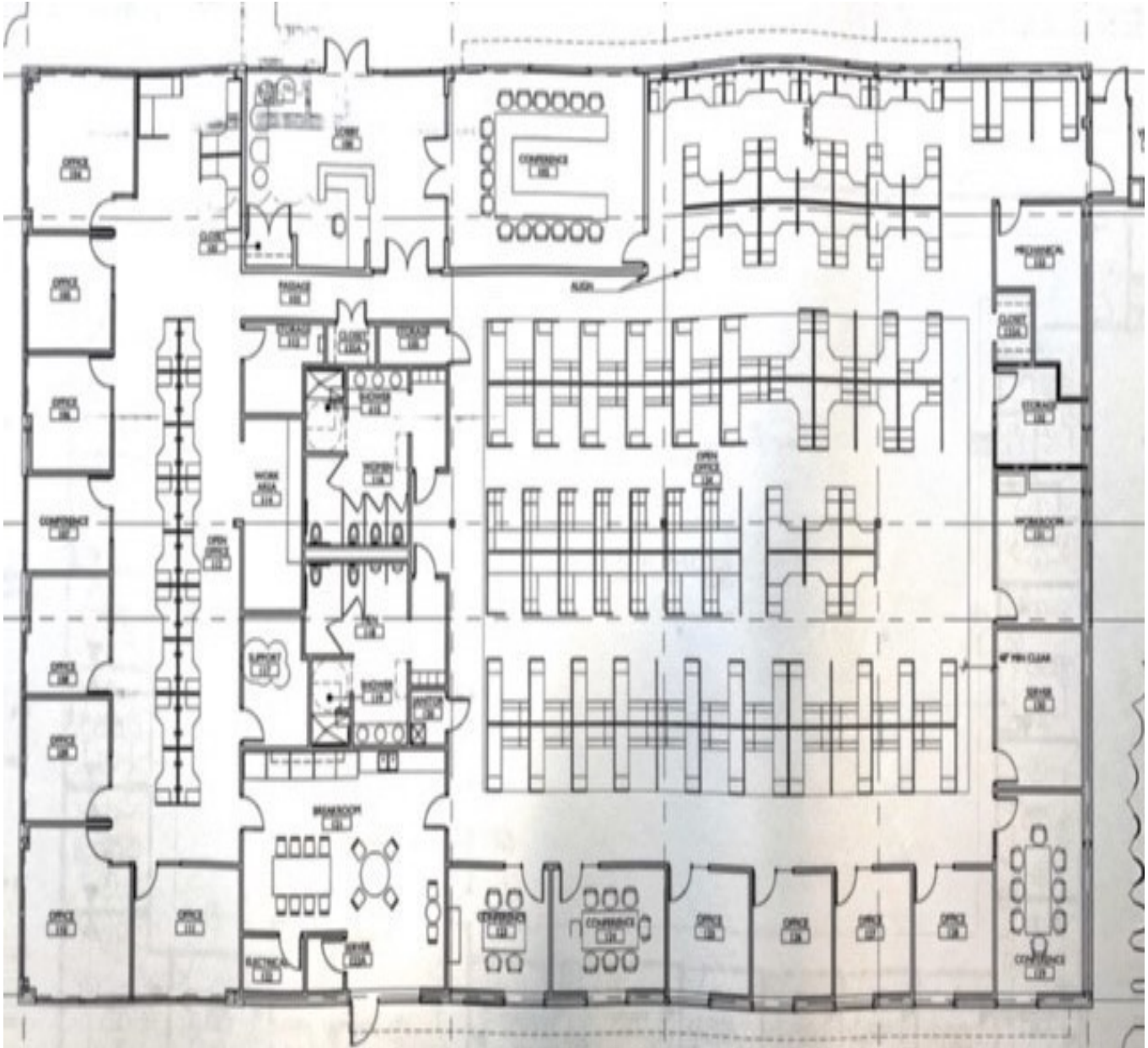
ALO Property Group  
9075 N. Meridian St., Ste. 175  
Indianapolis, IN 46260  
O: 317.853.7500  
www.alopg.com



# 1022 E 52nd Street

Indianapolis, IN 46220

## Floor Plan



**Mike Short**  
Director  
Mike@alopg.com  
C: 317.800.4664

ALO Property Group  
9075 N. Meridian St., Ste. 175  
Indianapolis, IN 46260  
O: 317.853.7500  
www.alopg.com

