

16 N Pennsylvania St

Indianapolis, IN 46204



Retail

1,100 - 2,300 SF

PROPERTY HIGHLIGHTS

- Up to 2,300 SF available on two floors.
- 1st Floor - 1,100 SF
- 2nd Floor - 1,200 SF
- Centrally located in Downtown's CBD, just one block from Monument Circle.
- Prominent high-traffic intersection of Pennsylvania and Washington Streets.
- Excellent accessibility, nearby parking garages and street parking.
- Located next to the Cultural Trail, and within walking distance of Downtown's many area attractions.



DEMOGRAPHICS	1 MILE	3 MILES	5 MILES
Total Households	4,887	38,033	98,186
Total Population	11,183	93,346	249,185
Average HH Income	\$66,676	\$44,287	\$42,142

Alison Melton
Vice President of Retail
Alison@alopg.com
C: 317.414.2547

ALO Property Group
9075 N. Meridian St., Ste. 175
Indianapolis, IN 46260
O: 317.853.7500
www.alopg.com



16 N Pennsylvania St

Indianapolis, IN 46204

Aerial Maps



Alison Melton
Vice President of Retail
Alison@alopg.com
C: 317.414.2547

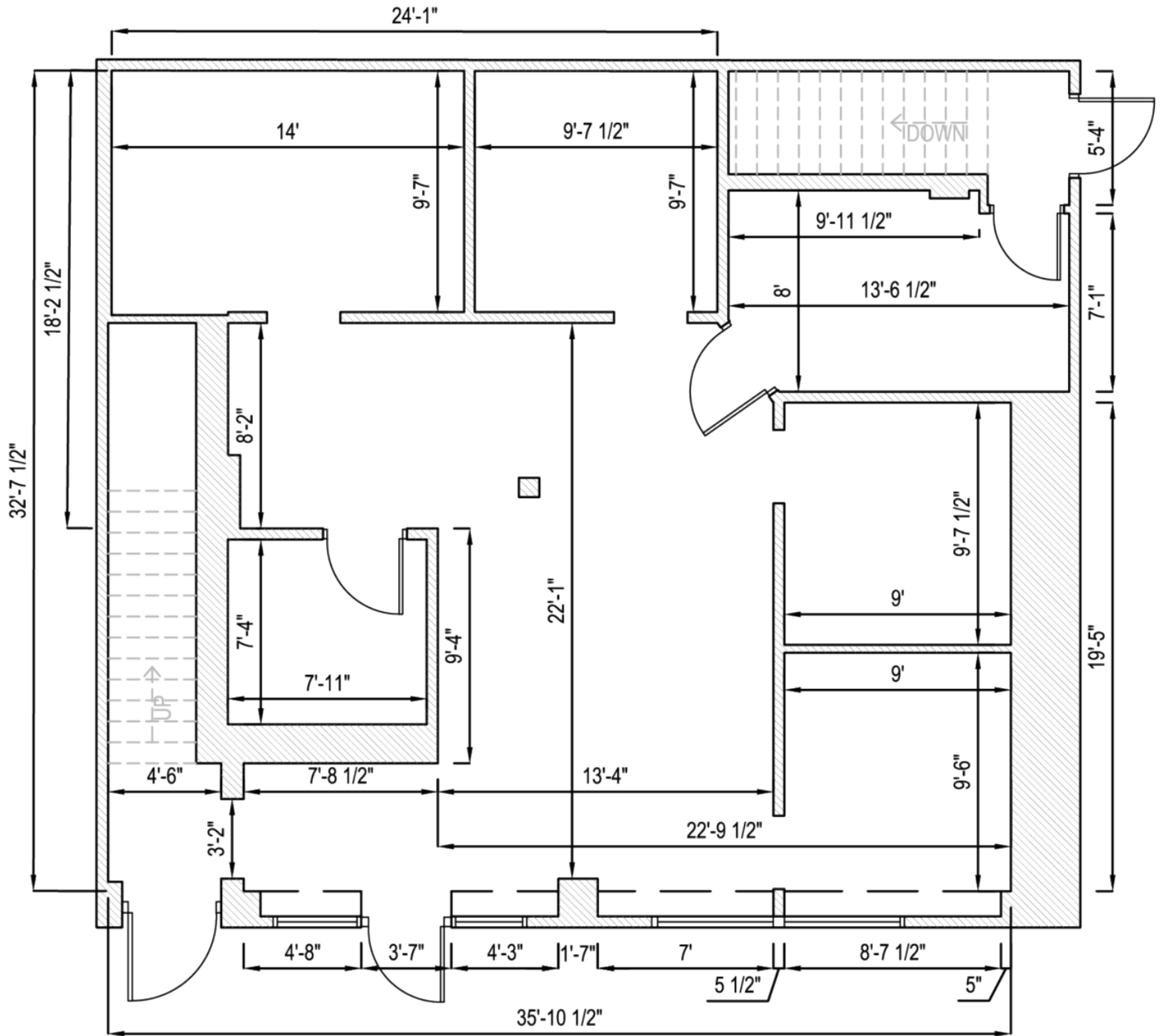
ALO Property Group
9075 N. Meridian St., Ste. 175
Indianapolis, IN 46260
O: 317.853.7500
www.alopg.com



16 N Pennsylvania St

Indianapolis, IN 46204

Ground Floor



Alison Melton
Vice President of Retail
Alison@alopg.com
C: 317.414.2547

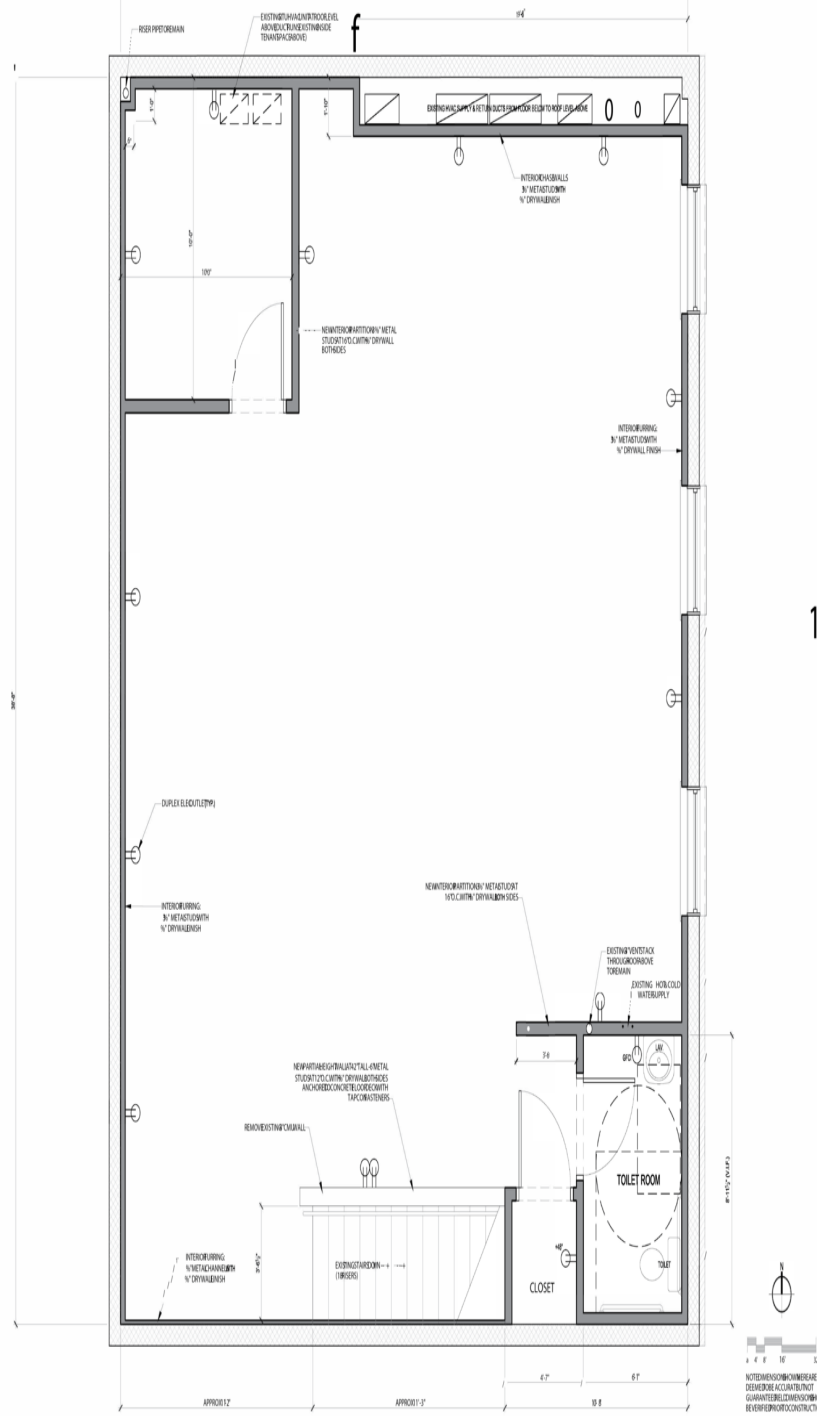
ALO Property Group
9075 N. Meridian St., Ste. 175
Indianapolis, IN 46260
O: 317.853.7500
www.alopg.com



16 N Pennsylvania St

Indianapolis, IN 46204

Second Floor



SCOGGINS
DESIGN
INC.

8546 ROCKFORD DRIVE
INDIANAPOLIS, IN 46234
TEL: 317.435.7321
www.scogginsdesign.com

16 N. PENN
OFFICE &
RETAIL SPACE

16 N PENNSYLVANIAN STREET
OFFICE & RETAIL SPACE
OWNER: ALLO PROPERTY GROUP
DESIGNED BY: SCOGGINS DESIGN INC.
DATE: 08/14/14
DRAWN BY: J. B. BELL

2nd Floor
FLOORPLAN

A2

Alison Melton
Vice President of Retail
Alison@alopg.com
C: 317.414.2547

ALO Property Group
9075 N. Meridian St., Ste. 175
Indianapolis, IN 46260
O: 317.853.7500
www.alopg.com

