

RT 173 & GREGORY DRIVE

Antioch, IL



Industrial Park - Land For Sale

OFFERING SUMMARY

Lot Size 13.47 acres

Sale Price STO

Traffic Count 15,500 VPD

Zoning M-1

PROPERTY HIGHLIGHTS

- Ready for immediate development
- Located within Antioch Corporate Center
- Improved landsite
- Two (2) miles from I-94 Interchange
- Corner lot
- Lighted intersection
- Located with a TIF District
- Strong nearby labor market
- Off-site detention

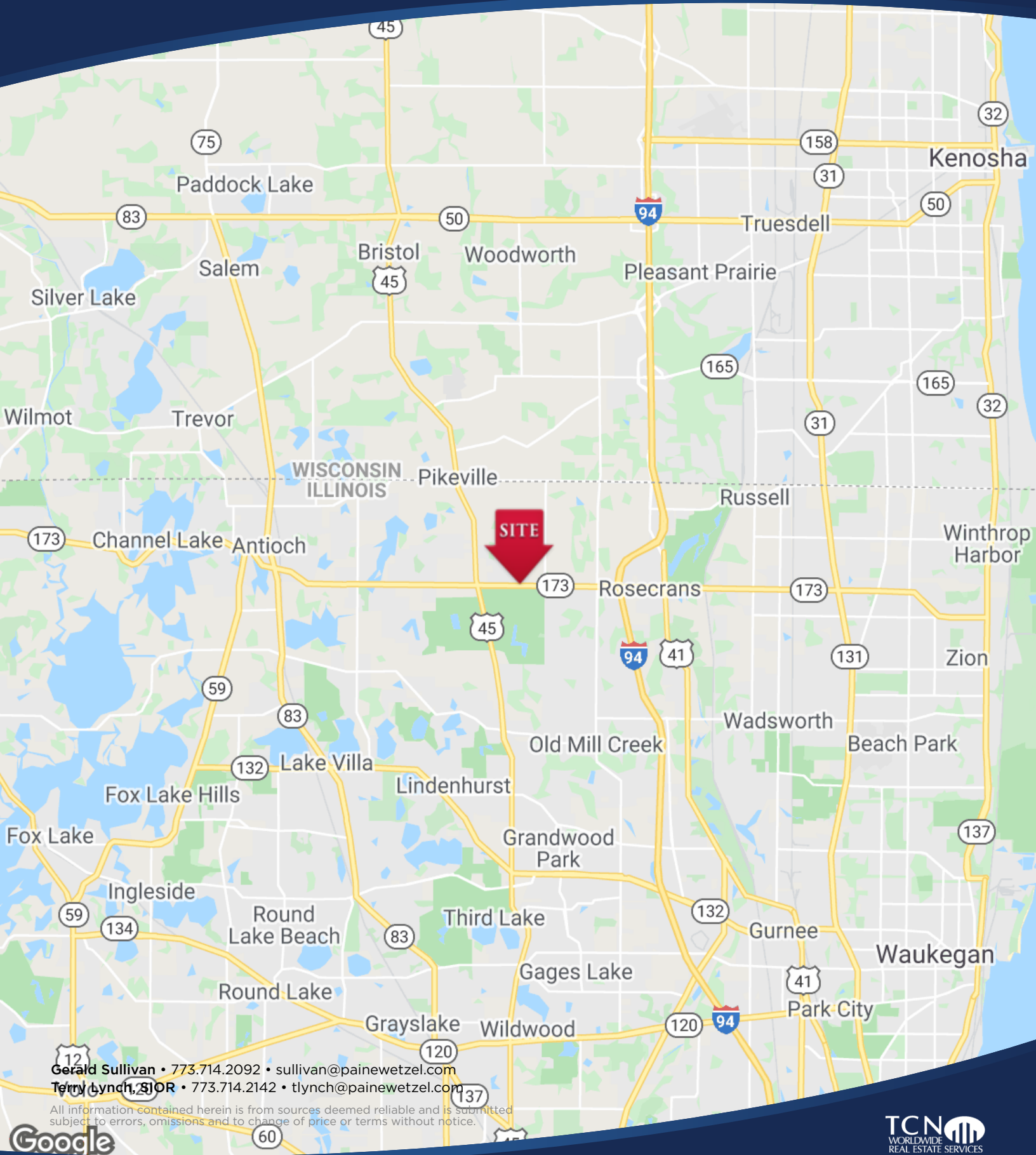
Gerald Sullivan • 773.714.2092 • sullivan@painewetzel.com
Terry Lynch, SIOR • 773.714.2142 • tlynch@painewetzel.com

All information contained herein is from sources deemed reliable and is submitted subject to errors, omissions and to change of price or terms without notice.

LAND FOR SALE

RT 173 & GREGORY DRIVE

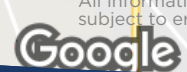
Antioch, IL



Gerald Sullivan • 773.714.2092 • sullivan@painewetzel.com

Terry Lynch, SIOR • 773.714.2142 • tlynch@painewetzel.com

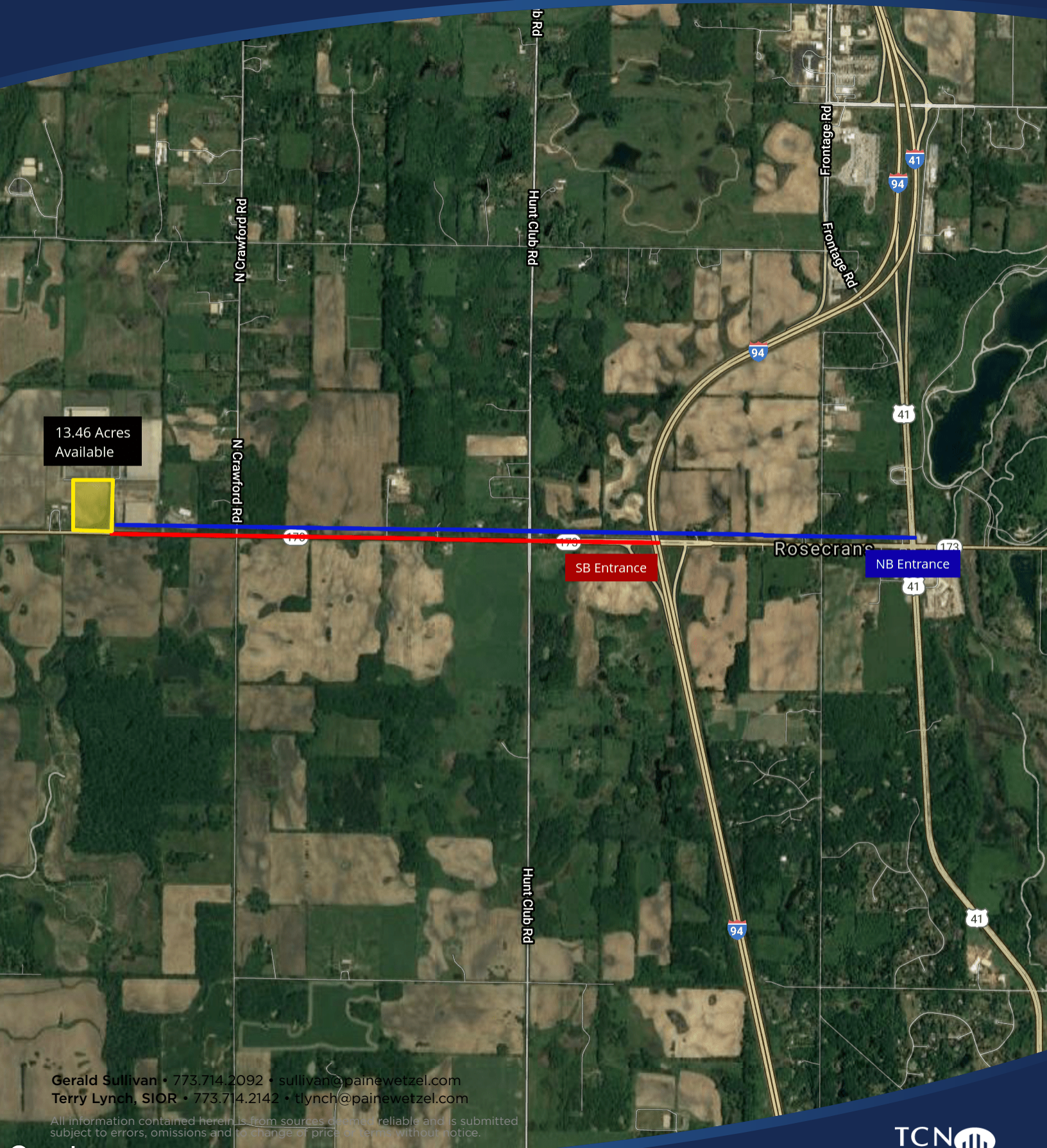
All information contained herein is from sources deemed reliable and is submitted subject to errors, omissions and to change of price or terms without notice.



LAND FOR SALE

RT 173 & GREGORY DRIVE

Antioch, IL



13.46 Acres Available

SB Entrance

NB Entrance

Gerald Sullivan • 773.714.2092 • sullivan@painewetzel.com
Terry Lynch, SIOR • 773.714.2142 • tlynch@painewetzel.com

All information contained herein is from sources deemed reliable and is submitted subject to errors, omissions and to change of price or terms without notice.