

# COSTA MESA HARBOR CENTER

RETAIL CENTER

FOR LEASE • FINAL UNIT • RETAIL SPACE  
**1927 HARBOR BLVD., COSTA MESA, CA**



COMMERCIAL  
WEST  
BROKERAGE

COMMERCIAL WEST BROKERAGE • 949-723-7300 • WWW.COMMERCIALWEST.COM

# COSTA MESA HARBOR CENTER RETAIL OPPORTUNITY

Retail opportunity directly on Harbor Boulevard, one of the region's busiest streets, featuring the nation's strongest restaurants and retailers. In-line unit available with easy access from Newport Blvd. and CA-55 commuter freeway.

- Harbor Blvd location; visibility to approx. 33,000+ CPD
- Located near busy Triangle Square, Grocery Outlet and Bevmo shopping center, Newport Blvd. and 17th Street.
- Strong daytime traffic; densely populated community with household incomes over \$110,000
- Monument signage on Harbor Blvd.

## LOCATION

### 1927 Harbor Boulevard

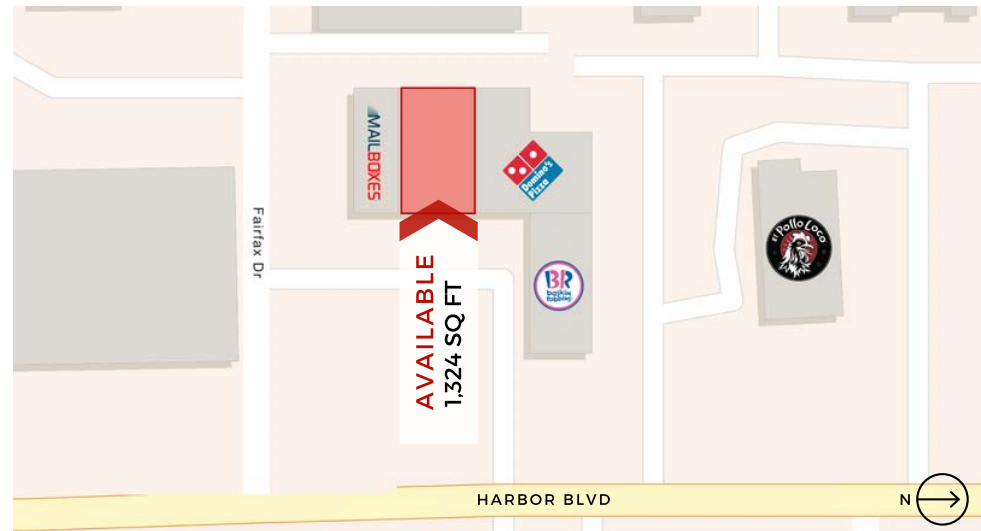
NWC Harbor Blvd. & Fairfax Dr.  
Costa Mesa, CA 92627

## AVAILABLE

Suite B | 1,324 Sq. Ft.

## IN GOOD COMPANY

Key tenants at Harbor Center include Dominos and Baskin-Robbins. The center is located at one of the busiest intersections in Costa Mesa near popular destinations including Triangle Square, SOCIAL Costa Mesa and In-n-Out Burger.



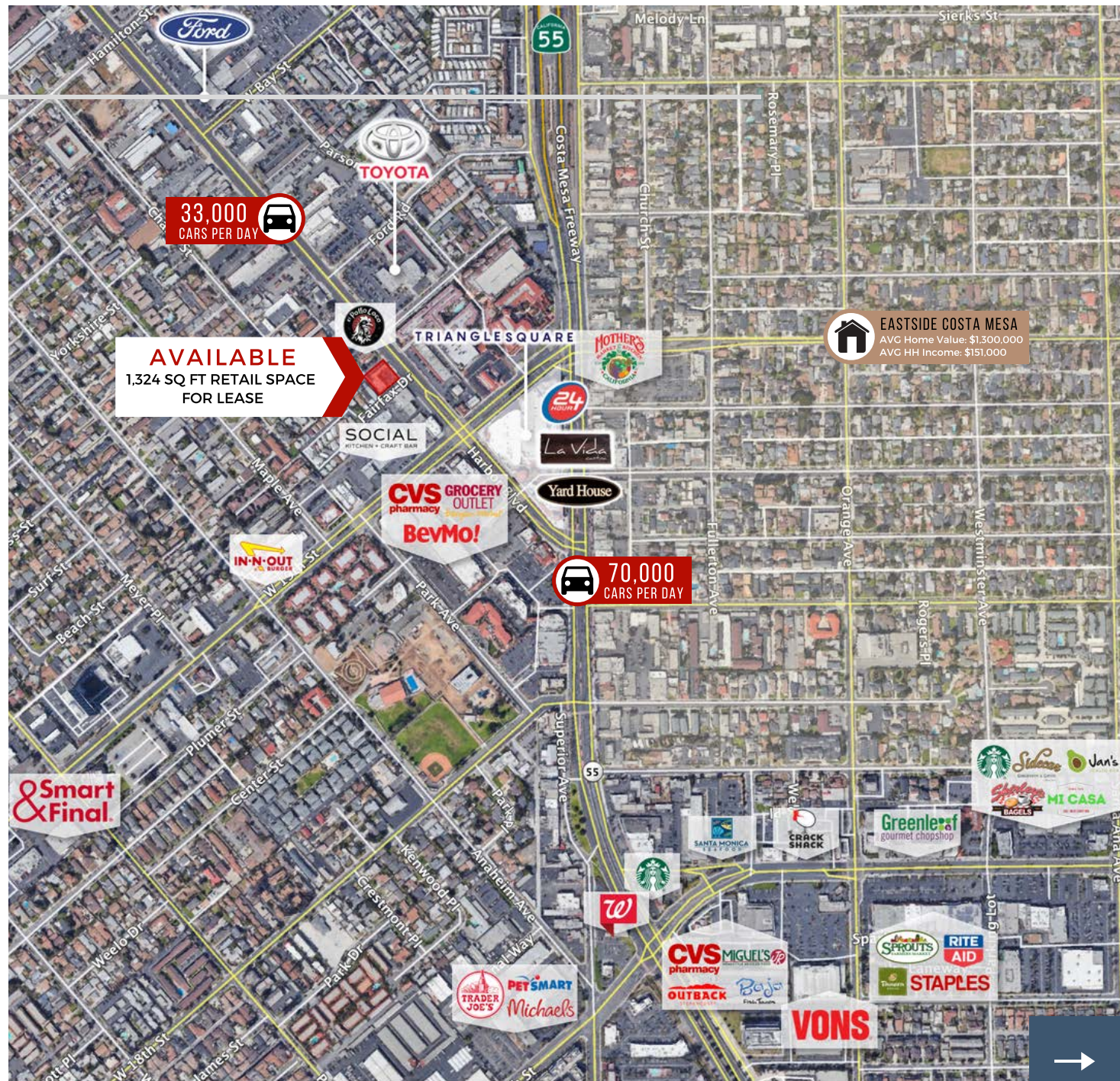
COMMERCIAL WEST BROKERAGE  
Doug Wombacher, LIC# 01424025  
Kate (Berry) Sullivan, LIC# 1966343  
949.723.7300 | kate@commercialwest.com

# Location

Ideal Costa Mesa location situated on Harbor Blvd. near 19th Street and Newport Blvd.

HARBOR CENTER  
1927 HARBOR BLVD  
COSTA MESA, CA 92627

SUITE B | 1,324 SQ. FT.



FOR  
LEASE



## COSTA MESA

### ESTIMATED POPULATION

1 mi | 42,964

2mi | 99,659

3 mi | 168,042



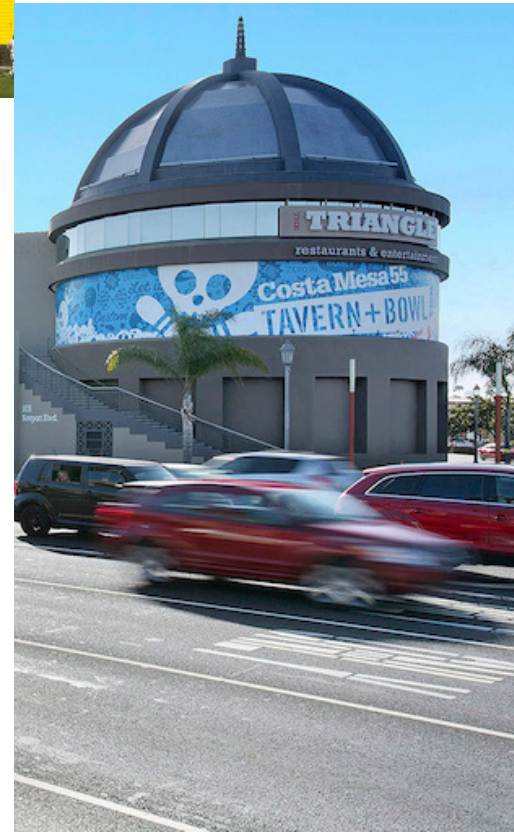
## BY THE NUMBERS

### AVERAGE HH INCOME

1 mi | \$89,514

2mi | \$119,469

3 mi | \$133,632



## BY THE NUMBERS

### DAYTIME POPULATION

1 mi | 38,681

2mi | 101,229

3 mi | 172,153

COMMERCIAL WEST BROKERAGE



(949) 723-7300 | [www.commercialwest.com](http://www.commercialwest.com)

