

THE GALT

800 SW Alder Street | Portland, OR 97205

FOR SUBLEASE



PRIME DOWNTOWN RETAIL CORNER FOR SUBLEASE

DETAILS

- Lease Rate: Call for Price / NNN
- Space Available: 3,976 SF
- Generous Tenant Improvement package available

FEATURES

- Prime corner ground floor space with tall storefront glass lines
- Recent major remodel with open floor plan, exposed beams and concrete flooring
- Great exposure situated across the street from premier hotels, restaurants and retailers in Downtown Portland's Central Business District (CBD)
- Located one block from public transportation, TriMet MAX Line and Streetcar Line
- Strategically located in Portland's prominent shopping area; blocks from Target, Nordstrom, Macy's, Nike Store, Directors Park, Pioneer Courthouse Square and Pioneer Place Mall

DEMOGRAPHICS

	1 MILE	3 MILES	5 MILES
2019 Total Population:	55,580	182,610	436,597
2024 Population:	60,880	196,063	462,967
Pop Growth 2019-2024:	9.54%	7.37%	6.04%
2019 Total Households:	34,671	94,369	200,424
Median Household Income:	\$50,725	\$68,991	\$75,043



04.14.2020

For more information or a property tour, please contact:

LUIS MARTIN DEL CAMPO
503.416.8422
LuisM@norris-stevens.com

TIM PFEIFFER
503.225.8455
TimP@norris-stevens.com

Norris & Stevens

INVESTMENT REAL ESTATE SERVICES



Information contained herein has been obtained from others and considered to be reliable; however, a prospective purchaser or lessee is expected to verify all information to his/her own satisfaction.

900 SW 5th Avenue • 17th Floor • Portland, OR 97204
503.223.3171 • norris-stevens.com

THE GALT

800 SW Alder Street | Portland, OR 97205

FOR SUBLEASE

FLOOR PLAN / AREA MAP

SHOPPING

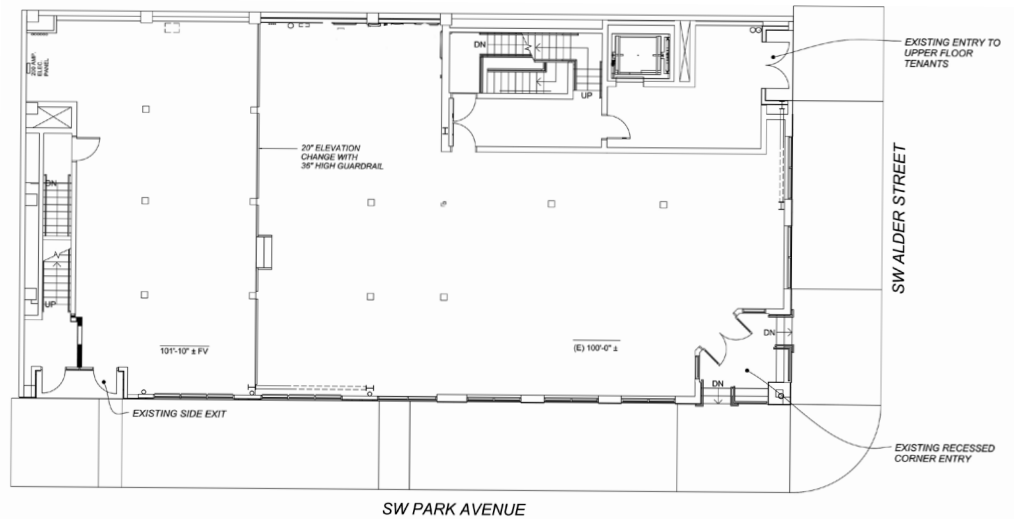
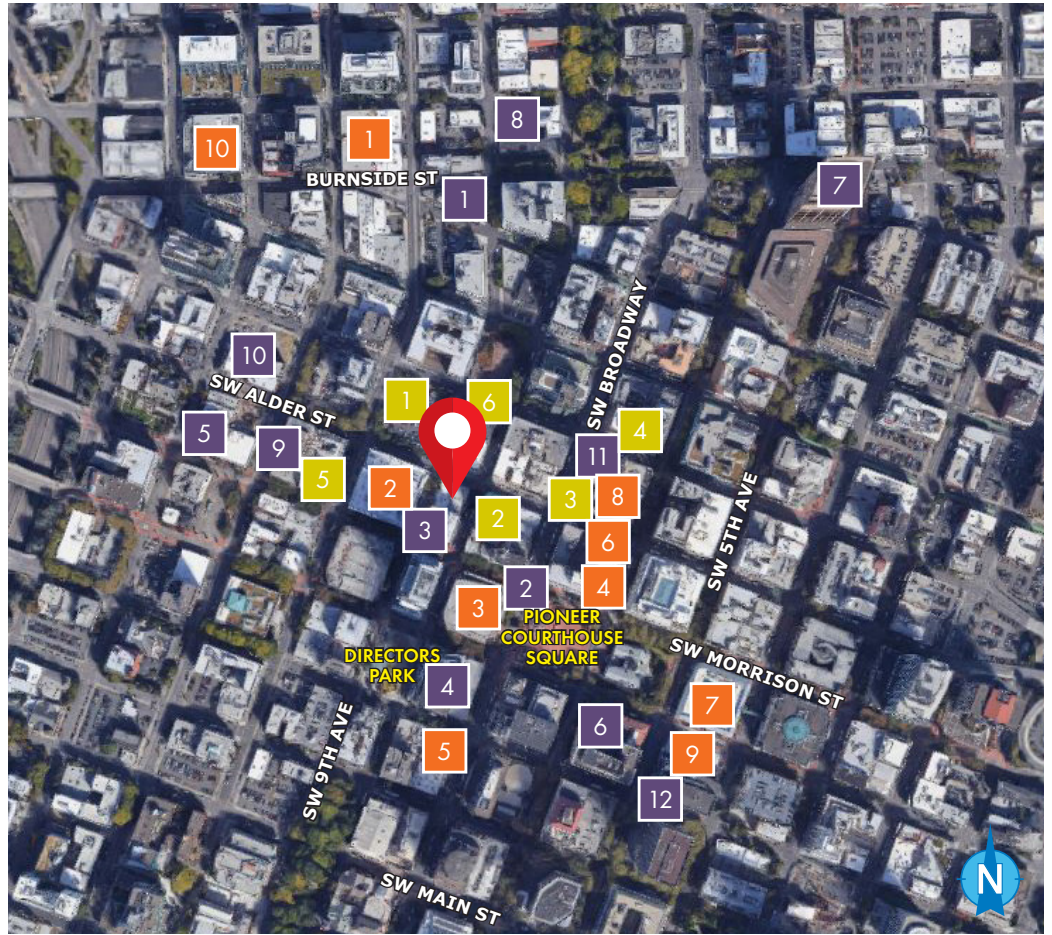
- 1 Powells Books
- 2 Target
- 3 Nordstrom
- 4 Muji
- 5 Columbia Outerwear
- 6 Rite Aid
- 7 Pioneer Place Shopping Mall
- 8 Office Depot & TJ Maxx
- 9 Apple Store
- 10 Whole Foods

DINING

- 1 Sizzle Pie
- 2 Starbucks
- 3 Brunch Box
- 4 Flying Elephants
- 5 Blue Star Donuts
- 6 Potbelly Sandwiches
- 7 Portland City Grill
- 8 Little Big Burger
- 9 Jake's Grill
- 10 Tasty n Alder
- 11 Peets Coffee and Tea
- 12 Yardhouse

HOTELS

- 1 Ritz Carlton - Under Construction
- 2 Dossier Hotel
- 3 Portland Marriott City Center
- 4 Kimpton Hotel Vintage Portland
- 5 Sentinel Hotel
- 6 Woodlark Hotel



For more information or a property tour, please contact:

LUIS MARTIN DEL CAMPO

503.416.8422

LuisM@norris-stevens.com

TIM PFEIFFER

503.225.8455

TimP@norris-stevens.com

Norris & Stevens

INVESTMENT REAL ESTATE SERVICES



Information contained herein has been obtained from others and considered to be reliable; however, a prospective purchaser or lessee is expected to verify all information to his/her own satisfaction.

900 SW 5th Avenue • 17th Floor • Portland, OR 97204
503.223.3171 • norris-stevens.com