

# 9800 PROFESSIONAL BUILDING

9800 SW Beaverton-Hillsdale Highway | Beaverton, OR 97005

## FOR LEASE



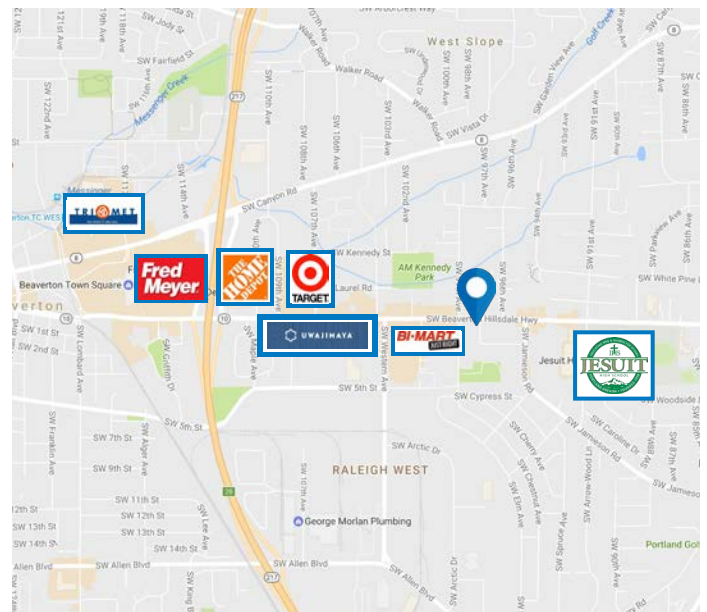
## OFFICE SPACE FOR LEASE

### DETAILS

- Space available:  $\pm 500 - 6,000$  SF
- Lease Rate: Call for rate, Full Service

### FEATURES

- Beautiful window line
- Easy access to Hwy 217
- Excellent sign exposure
- Traffic count: 29,000 CPD
- ADA accessible
- Free private parking with 3/1,000 SF parking ratio
- Minutes from downtown



04.28.2021

For more information or a property tour, please contact:

**TIM PFEIFFER**

503.225.8455

TimP@norris-stevens.com

**CAMDEN MULLER**

503.225.8498

CamdenM@norris-stevens.com



Information contained herein has been obtained from others and considered to be reliable; however, a prospective purchaser or lessee is expected to verify all information to his/her own satisfaction.

## Norris & Stevens

INVESTMENT REAL ESTATE SERVICES

900 SW 5th Avenue • 17th Floor • Portland, OR 97204  
503.223.3171 • norris-stevens.com

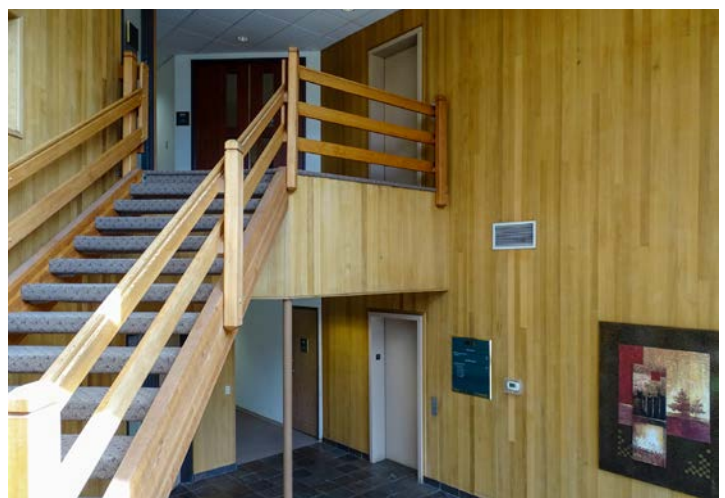


# 9800 PROFESSIONAL BUILDING

9800 SW Beaverton-Hillsdale Highway | Beaverton, OR 97005

## FOR LEASE

### PROPERTY PHOTOS



For more information or a property tour, please contact:

**TIM PFEIFFER**  
503.225.8455  
TimP@norris-stevens.com

**CAMDEN MULLER**  
503.225.8498  
CamdenM@norris-stevens.com



Information contained herein has been obtained from others and considered to be reliable; however, a prospective purchaser or lessee is expected to verify all information to his/her own satisfaction.

## Norris & Stevens

INVESTMENT REAL ESTATE SERVICES

900 SW 5th Avenue • 17th Floor • Portland, OR 97204  
503.223.3171 • [norris-stevens.com](http://norris-stevens.com)

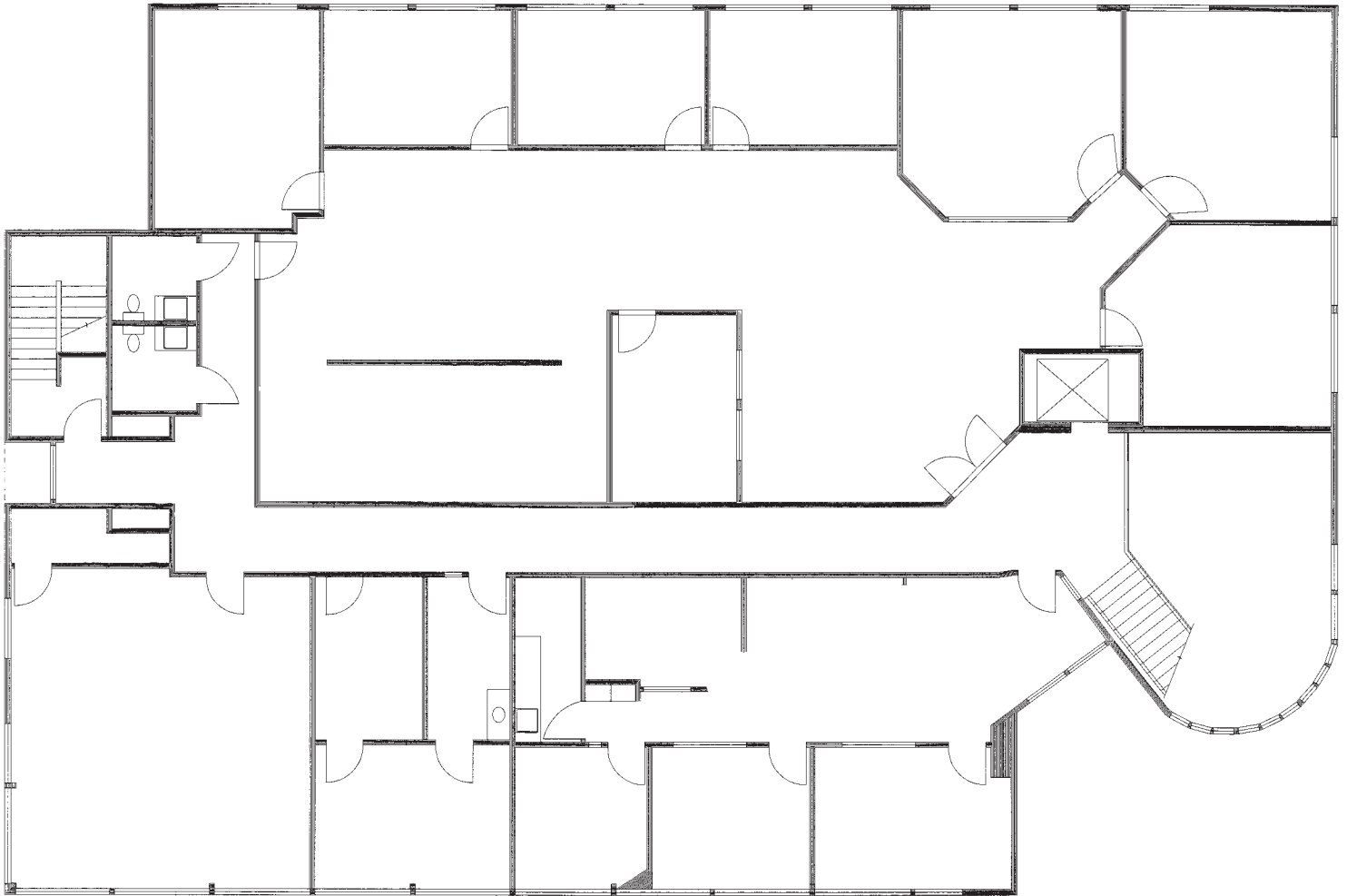
# 9800 PROFESSIONAL BUILDING

9800 SW Beaverton-Hillsdale Highway | Beaverton, OR 97005

## FOR LEASE

### FLOOR PLAN

#### SECOND FLOOR



For more information or a property tour, please contact:

**TIM PFEIFFER**  
503.225.8455  
TimP@norris-stevens.com

**CAMDEN MULLER**  
503.225.8498  
CamdenM@norris-stevens.com

## Norris & Stevens

INVESTMENT REAL ESTATE SERVICES



Information contained herein has been obtained from others and considered to be reliable; however, a prospective purchaser or lessee is expected to verify all information to his/her own satisfaction.

900 SW 5th Avenue • 17th Floor • Portland, OR 97204  
503.223.3171 • [norris-stevens.com](http://norris-stevens.com)