

FOR SALE | LAND

BUILD TO SUIT POSSIBILITY; PRICE NEGOTIABLE



Boundary Road | Marlboro, NJ 07746



PROPERTY SUMMARY

Sale Price: \$3,000,000
Lot Size: ± 7.84 Acres
Cross Streets: SE quadrant of Vanderburg and Boundary Roads

PROPERTY OVERVIEW

Development Site for Sale - As Is

LOCATION OVERVIEW

Corner property at Vanderburg and Boundary Road. Easy access to Routes 18, 79, 34, 9, and the Garden State Parkway.

PROPERTY HIGHLIGHTS

- 7.84 Acres Zoned L-I
- Permitted uses include commercial recreational (indoor athletic facility) and light industrial (self-storage, flex)
- Near Maple Creek Farm, luxury homes, light industrial properties, and Colts Neck
- Owner will sell contingent upon approvals
- Taxes, \$18,163.88 (2018)
- Build to suit possibility, price negotiable

FOR MORE INFORMATION, PLEASE CONTACT:

Douglas Sitar | P: 732.623.2135 | C: 732.859.2144 | dsitar@sitarcompany.com
Robert Bogash | P: 732.623.2159 | C: 732.319.4680 | bogash@sitarcompany.com

1481 Oak Tree Road
Iselin, NJ 08830
T: 732.283.9000 | F: 732.283.3103
www.sitarcompany.com



FOR SALE | LAND

BUILD TO SUIT POSSIBILITY; PRICE NEGOTIABLE



Boundary Road | Marlboro, NJ 07746



Concept Plan

FOR MORE INFORMATION, PLEASE CONTACT:

Douglas Sitar | P: 732.623.2135 | C: 732.859.2144 | dsitar@sitarcompany.com
Robert Bogash | P: 732.623.2159 | C: 732.319.4680 | bogash@sitarcompany.com

1481 Oak Tree Road
Iselin, NJ 08830
T: 732.283.9000 | F: 732.283.3103
www.sitarcompany.com

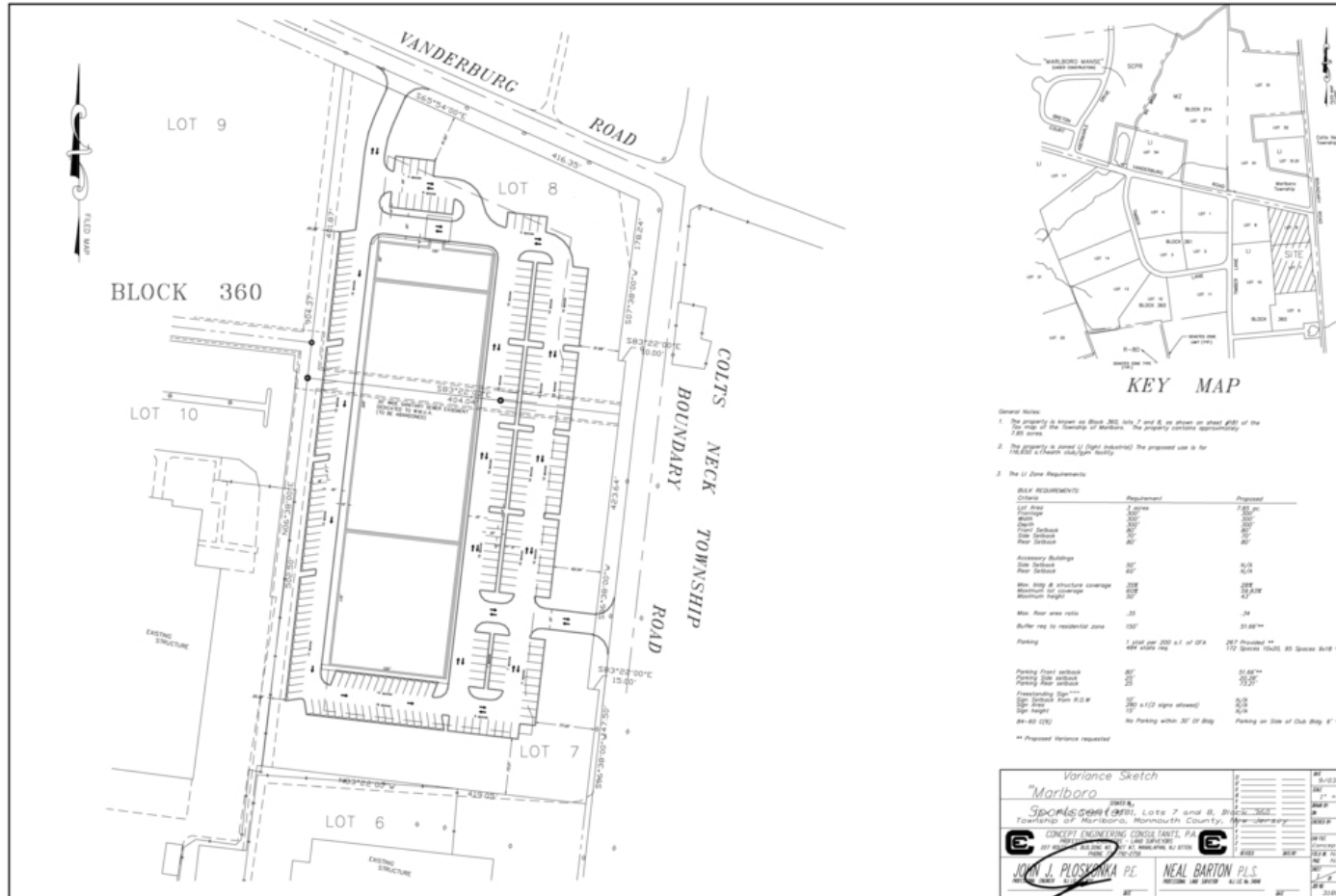


FOR SALE | LAND

BUILD TO SUIT POSSIBILITY; PRICE NEGOTIABLE



Boundary Road | Marlboro, NJ 07746



Concept Plan

FOR MORE INFORMATION, PLEASE CONTACT:

Douglas Sitar | P: 732.623.2135 | C: 732.859.2144 | dsitar@sitarcompany.com
Robert Bogash | P: 732.623.2159 | C: 732.319.4680 | bogash@sitarcompany.com

1481 Oak Tree Road
Iselin, NJ 08830
T: 732.283.9000 | F: 732.283.3103
www.sitarcompany.com

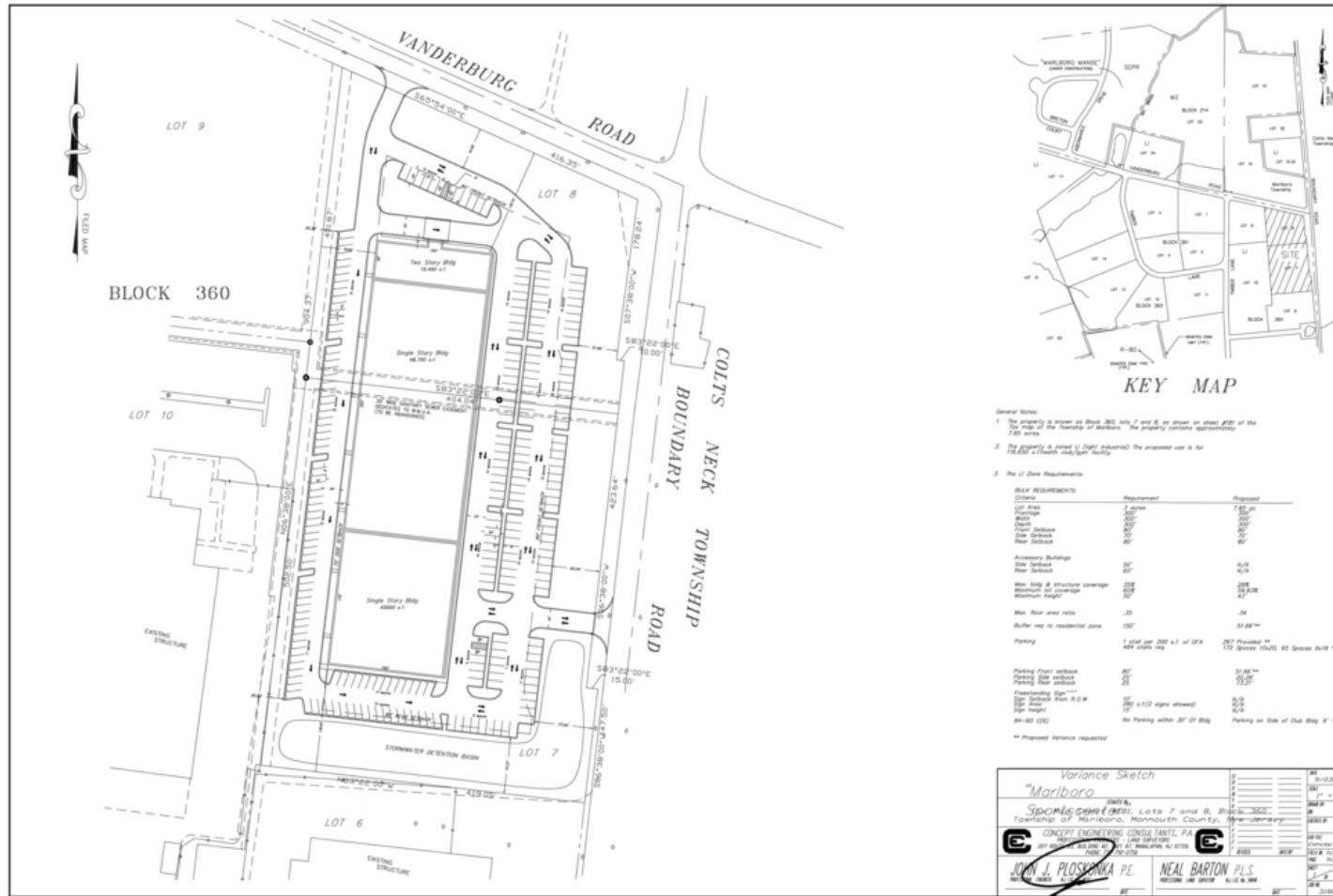


FOR SALE | LAND

BUILD TO SUIT POSSIBILITY; PRICE NEGOTIABLE



Boundary Road | Marlboro, NJ 07746



Concept Plan

FOR MORE INFORMATION, PLEASE CONTACT:

Douglas Sitar | P: 732.623.2135 | C: 732.859.2144 | dsitar@sitarcompany.com
Robert Bogash | P: 732.623.2159 | C: 732.319.4680 | bogash@sitarcompany.com

1481 Oak Tree Road
Iselin, NJ 08830
T: 732.283.9000 | F: 732.283.3103
www.sitarcompany.com

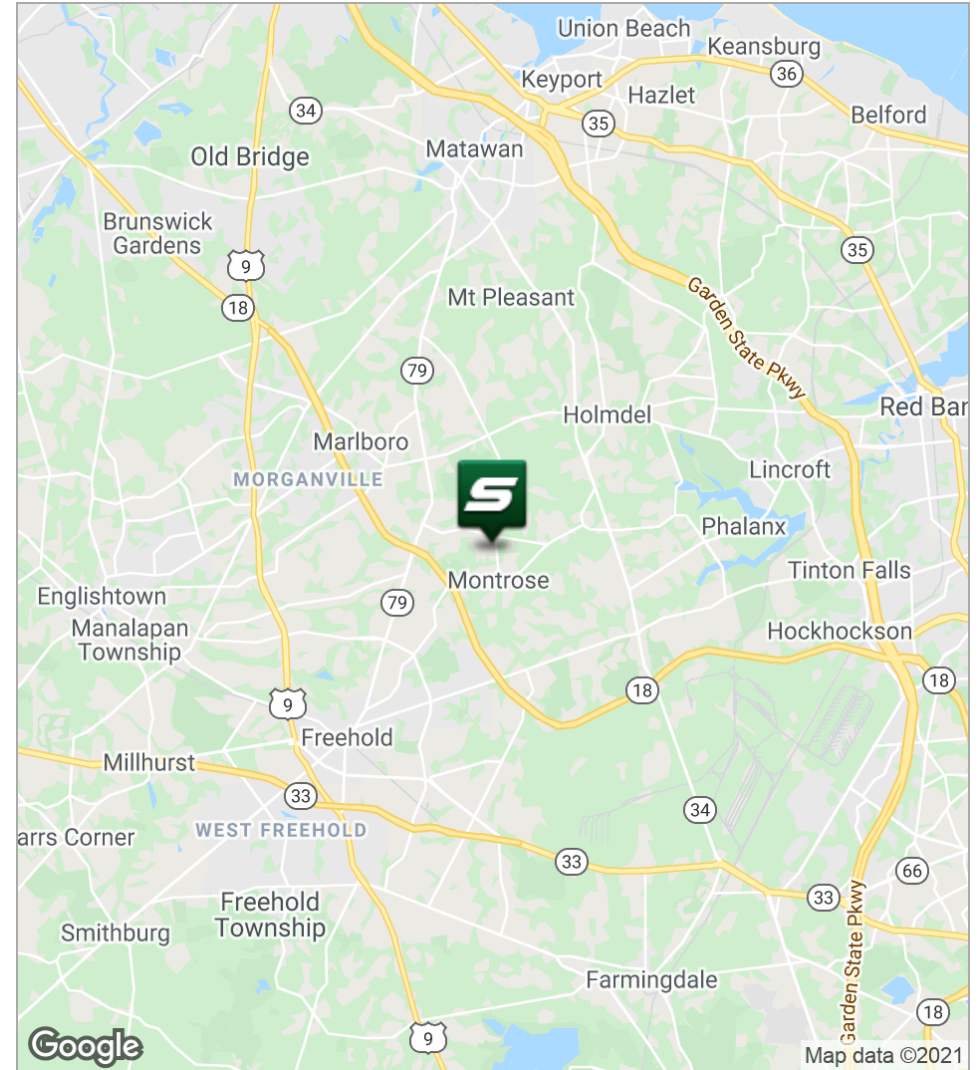
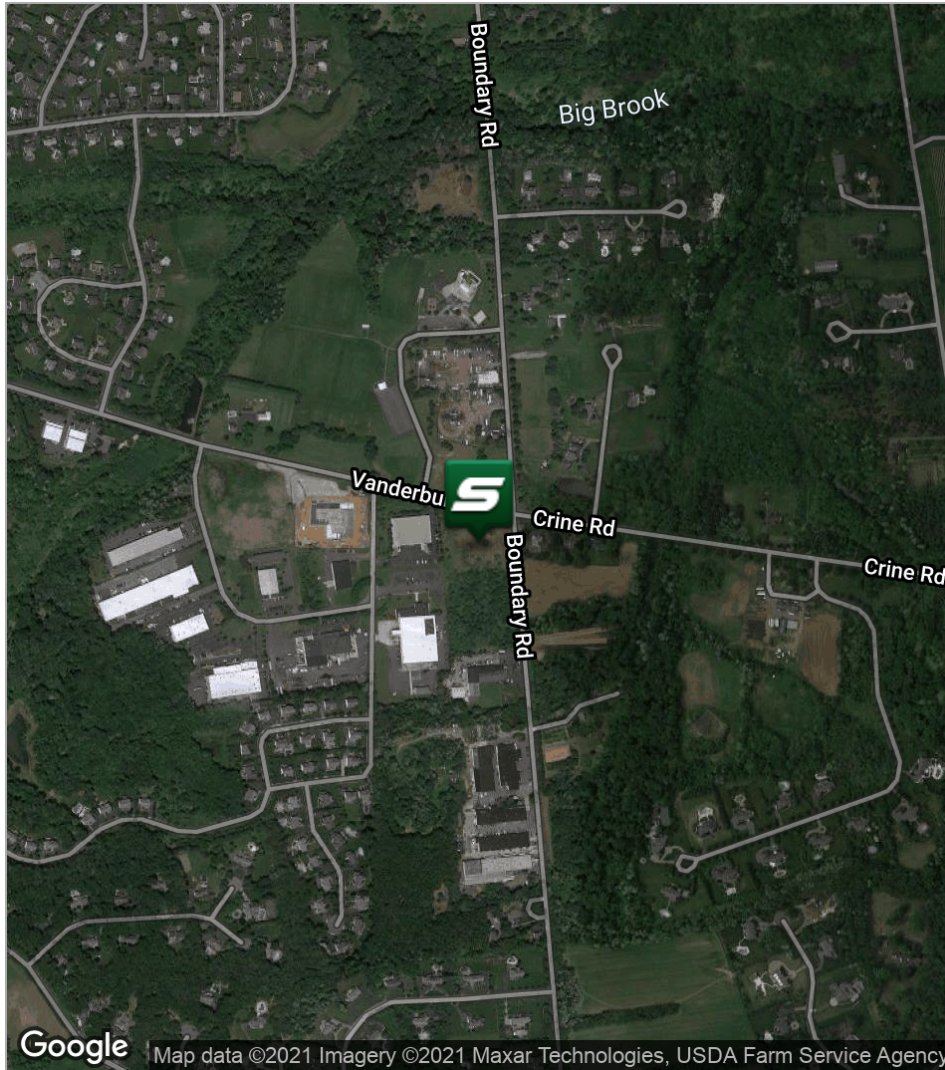


FOR SALE | LAND

BUILD TO SUIT POSSIBILITY; PRICE NEGOTIABLE



Boundary Road | Marlboro, NJ 07746



FOR MORE INFORMATION, PLEASE CONTACT:

Douglas Sitar | P: 732.623.2135 | C: 732.859.2144 | dsitar@sitarcompany.com
Robert Bogash | P: 732.623.2159 | C: 732.319.4680 | bogash@sitarcompany.com

1481 Oak Tree Road
Iselin, NJ 08830
T: 732.283.9000 | F: 732.283.3103
www.sitarcompany.com



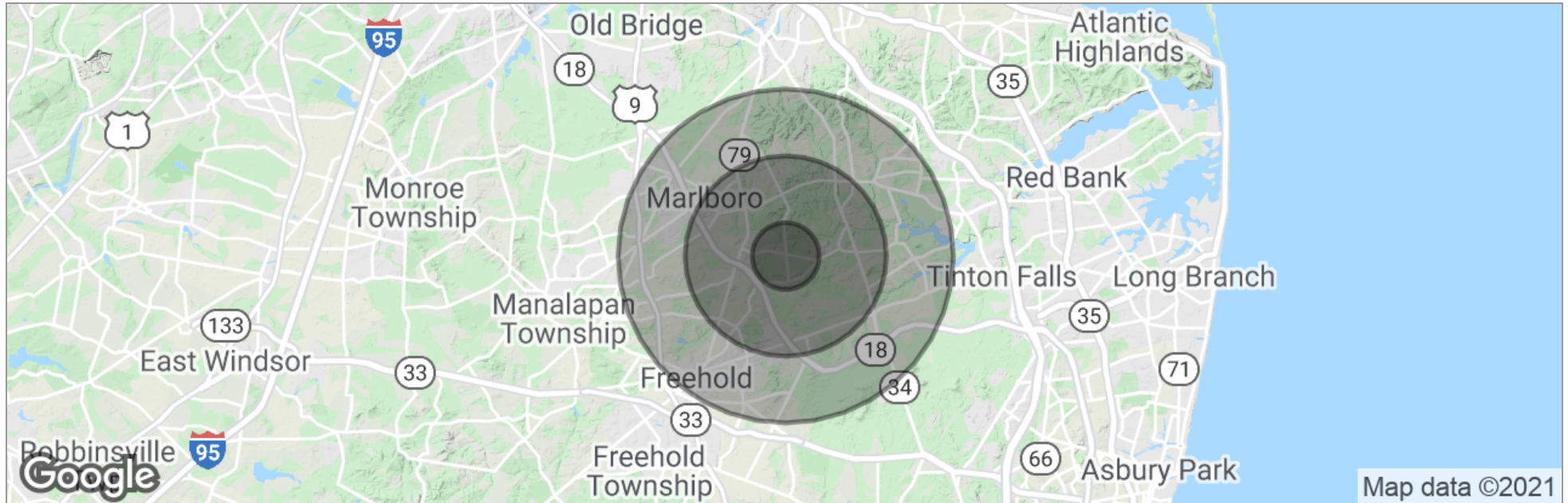
Disclaimer: ALL INFORMATION FURNISHED REGARDING PROPERTY FOR SALE, RENTAL OR FINANCING IS FROM SOURCES DEEMED RELIABLE, BUT NO WARRANTY OR REPRESENTATION IS MADE AS TO THE ACCURACY THEREOF AND SAME IS SUBMITTED SUBJECT TO ERRORS, OMISSIONS, CHANGES OF PRICE, RENTAL OR OTHER CONDITIONS, PRIOR SALE, LEASE OR FINANCING OR WITHDRAWAL WITHOUT NOTICE.

FOR SALE | LAND

BUILD TO SUIT POSSIBILITY; PRICE NEGOTIABLE



Boundary Road | Marlboro, NJ 07746



	1 Mile	3 Miles	5 Miles
Total Population	2,646	26,416	77,185
Population Density	842	934	983
Median Age	39.8	40.0	40.1
Median Age (Male)	39.1	39.5	39.6
Median Age (Female)	40.5	40.6	40.6
Total Households	743	7,808	24,055
# of Persons Per HH	3.6	3.4	3.2
Average HH Income	\$189,166	\$177,478	\$158,710
Average House Value	\$859,770	\$679,487	\$586,671

* Demographic data derived from 2010 US Census

FOR MORE INFORMATION, PLEASE CONTACT:

Douglas Sitar | P: 732.623.2135 | C: 732.859.2144 | dsitar@sitarcompany.com
Robert Bogash | P: 732.623.2159 | C: 732.319.4680 | bogash@sitarcompany.com

1481 Oak Tree Road
Iselin, NJ 08830
T: 732.283.9000 | F: 732.283.3103
www.sitarcompany.com



Disclaimer: ALL INFORMATION FURNISHED REGARDING PROPERTY FOR SALE, RENTAL OR FINANCING IS FROM SOURCES DEEMED RELIABLE, BUT NO WARRANTY OR REPRESENTATION IS MADE AS TO THE ACCURACY THEREOF AND SAME IS SUBMITTED SUBJECT TO ERRORS, OMISSIONS, CHANGES OF PRICE, RENTAL OR OTHER CONDITIONS, PRIOR SALE, LEASE OR FINANCING OR WITHDRAWAL WITHOUT NOTICE.

FOR SALE | LAND

BUILD TO SUIT POSSIBILITY; PRICE NEGOTIABLE



Boundary Road | Marlboro, NJ 07746

Commercial Brokerage Leasing and Sales

Sitar Realty Company TCN Worldwide is a leader in the commercial brokerage industry of New Jersey. We are full-service brokerage firm and the largest remaining regional independently owned commercial brokerage firm in the state.

Property Management Services

Twin Brook Management, LLC is widely respected in the property management industry and can handle all aspects of property management. We offer full service management or a more limited management approach depending on the client's needs.

Property Tax Consulting

Our real estate tax team can provide an analysis of your property's taxes to determine if you are over-assessed and based on the results of our analysis we can reduce your property tax burden.

Rent Receiver Services

Banks, law firms and courts rely on our company to preserve property values and stabilize properties that are in the process of foreclosure. Our hands-on approach, along with the latest technology allows our clients to feel comfortable and informed throughout the entire process.

Award-Winning Research

In today's real estate market, timely, accurate information can provide a competitive edge that our clients need to succeed. Our database allows us to access information pertaining to over 300 million square feet of office and industrial space and is updated continuously.

Consulting and Advisory Services

Our services range from multivariate financial analysis to interstate site selection. We can help to maximize your company's profits while your focus on your company's core business.

Development

Our development division has been responsible for the development of hundreds of millions of dollars of properties throughout New Jersey. Our firm is known for our high quality projects that are architecturally significant. Due to our years of experience, we can assist you at any level in the development process.

FOR MORE INFORMATION, PLEASE CONTACT:

Douglas Sitar | P: 732.623.2135 | C: 732.859.2144 | dsitar@sitarcompany.com
Robert Bogash | P: 732.623.2159 | C: 732.319.4680 | bogash@sitarcompany.com

1481 Oak Tree Road
Iselin, NJ 08830
T: 732.283.9000 | F: 732.283.3103
www.sitarcompany.com

