

OFFICE SUITE
FOR LEASE



REAL ESTATE SERVICES
TRUSTED SINCE 1962

206 NORTH JACKSON STREET, SUITE 202
GLENDALE, CA 91206

RANDY STEVENSON

PRESIDENT
O: 818.956.7001 X155 C: 818.634.3281
RANDYS@STEVENSONREALESTATE.COM
CALDRE #01228475

KRIS HONS

CHIEF OPERATING OFFICER
O: 818.956.7001 X127 C: 626.826.2431
KHONS@STEVENSONREALESTATE.COM
CALDRE #01807261

1111 NORTH BRAND BOULEVARD
SUITE 200
GLENDALE, CA 91202
STEVENSONREALESTATE.COM
CALDRE #00983560

206 NORTH JACKSON STREET, SUITE 202

GLENDALE, CA 91206

**OFFERING SUMMARY**

Available Space:	2,193 SF
Lease Rate:	\$2.35/SF/MO, MG
Term:	3-5 Years
Building Size:	16,460 SF
Lot Size:	13,500 SF
Zoning:	C3
Year Built:	1991

PROPERTY OVERVIEW

Suite is comprised of a reception area, four (4) offices, one (1) conference room and an open area. There are seven (7) parking spaces available at \$50 per space per month. Property is an attractive garden office building with six (6) units; outstanding for professional offices; one block from Glendale City Hall, Courthouse, and Police Department, and Glendale Fashion Center.

DISCLAIMER: All information provided herein together with any projections or other data has been furnished from sources which we deem reliable, but for which we assume no liability, expressed or implied. Interested parties are to conduct independent investigation and verification of all information including but not limited to condition of the property, compliance or lack of compliance with applicable governmental requirements, development potential or suitability, financial performance of the property, projected financial performance of the property, any party's intended use or any and all other matters.

**RANDY STEVENSON**

O: 818.956.7001 X155
 C: 818.634.3281
 RANDYS@STEVENSONREALESTATE.COM

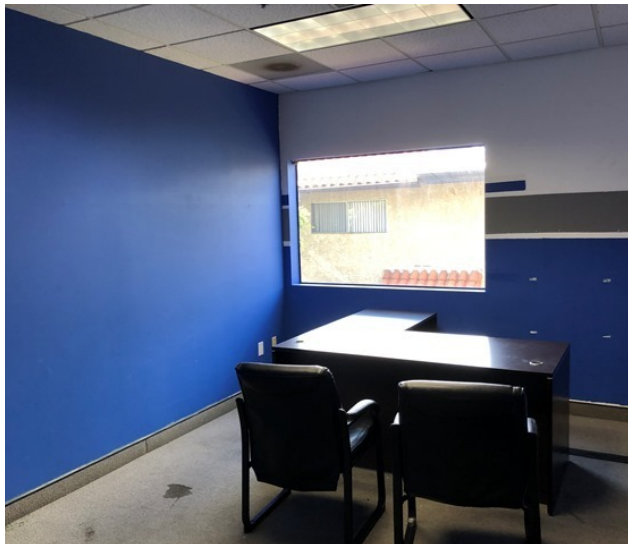
KRIS HONS

O: 818.956.7001 X127
 C: 626.826.2431
 KHONS@STEVENSONREALESTATE.COM

1111 NORTH BRAND BOULEVARD
 SUITE 200
 GLENDALE, CA 91202
 STEVENSONREALESTATE.COM
 CALDRE #00983560

206 NORTH JACKSON STREET, SUITE 202

GLENDALE, CA 91206



RANDY STEVENSON

O: 818.956.7001 X155

C: 818.634.3281

RANDYS@STEVENSONREALESTATE.COM

KRIS HONS

O: 818.956.7001 X127

C: 626.826.2431

KHONS@STEVENSONREALESTATE.COM

1111 NORTH BRAND BOULEVARD

SUITE 200

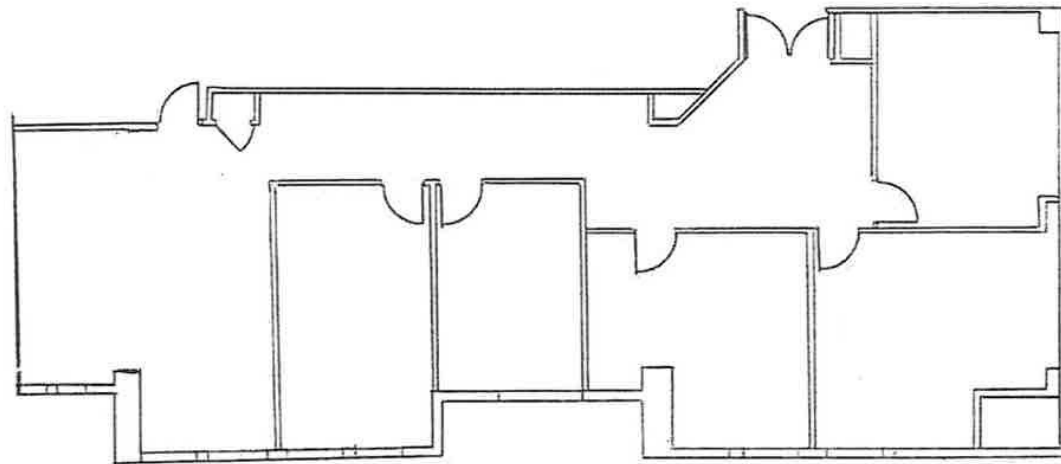
GLENDALE, CA 91202

STEVENSONREALESTATE.COM

CALDRE #00983560

206 NORTH JACKSON STREET, SUITE 202

GLENDAL, CA 91206



RANDY STEVENSON

O: 818.956.7001 X155
C: 818.634.3281
RANDYS@STEVENSONREALESTATE.COM

KRIS HONS

O: 818.956.7001 X127
C: 626.826.2431
KHONS@STEVENSONREALESTATE.COM

1111 NORTH BRAND BOULEVARD
SUITE 200
GLENDAL, CA 91202
STEVENSONREALESTATE.COM
CALDRE #00983560

206 NORTH JACKSON STREET, SUITE 202

GLENDALE, CA 91206



RANDY STEVENSON

O: 818.956.7001 X155
C: 818.634.3281
RANDYS@STEVENSONREALESTATE.COM

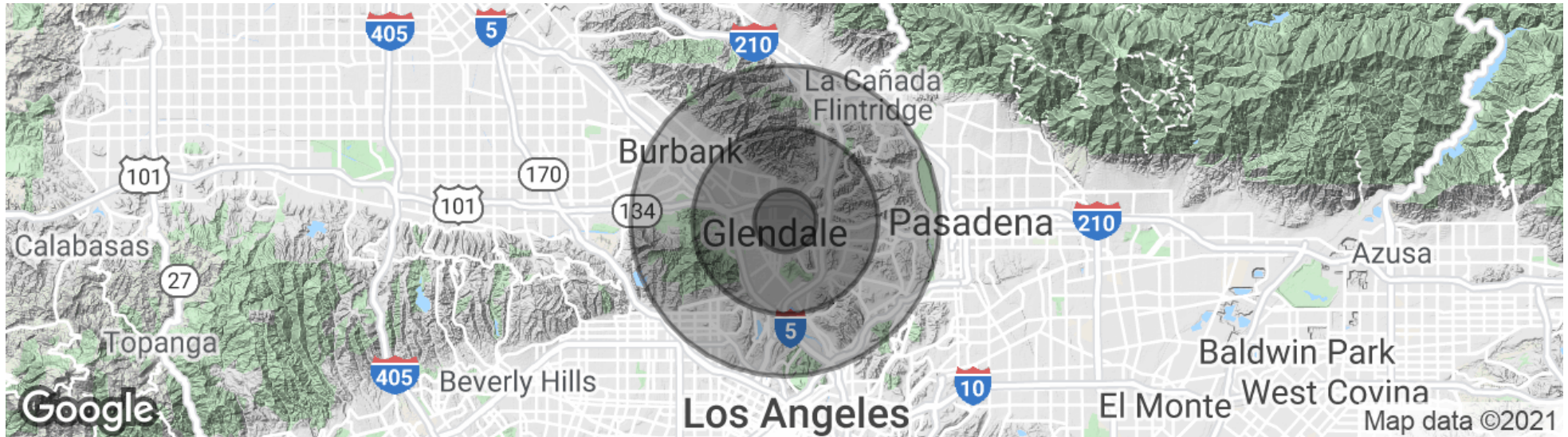
KRIS HONS

O: 818.956.7001 X127
C: 626.826.2431
KHONS@STEVENSONREALESTATE.COM

1111 NORTH BRAND BOULEVARD
SUITE 200
GLENDALE, CA 91202
STEVENSONREALESTATE.COM
CALDRE #00983560

206 NORTH JACKSON STREET, SUITE 202

GLENDALE, CA 91206

**POPULATION**

	1 MILE	3 MILES	5 MILES
Total population	63,837	230,014	560,553
Median age	40.8	39.3	38.1
Median age (Male)	39.0	38.0	37.1
Median age (Female)	41.8	40.3	38.9

HOUSEHOLDS & INCOME

	1 MILE	3 MILES	5 MILES
Total households	24,869	84,874	208,749
# of persons per HH	2.6	2.7	2.7
Average HH income	\$56,287	\$70,947	\$76,732
Average house value	\$469,665	\$584,668	\$624,750

* Demographic data derived from 2010 US Census

**RANDY STEVENSON**

O: 818.956.7001 X155
 C: 818.634.3281
 RANDYS@STEVENSONREALESTATE.COM

KRIS HONS

O: 818.956.7001 X127
 C: 626.826.2431
 KHONS@STEVENSONREALESTATE.COM

1111 NORTH BRAND BOULEVARD
 SUITE 200
 GLENDALE, CA 91202
 STEVENSONREALESTATE.COM
 CALDRE #00983560