

909 EAST ROUTE 130

BURLINGTON, NJ

±7.80 ACRES AVAILABLE FOR LEASE OR SALE

NEARBY



FULFILLMENT
CENTER



DISTRIBUTION
CENTER



property highlights.

- Site strategically positioned on the corner of Route 130 and Jones Street
- Highly visible site with dedicated left turn lane on Rt. 130 North
- Ideal for multi-family, car dealership, senior living, or self-storage uses
- Co-tenancy surrounding the site includes: Amazon Fulfillment Center, Dollar General, Dollar Tree, Shoprite and more
- ±22,000 SF building on site

stats.

2020 DEMOGRAPHICS*	1 MILE	3 MILES	5 MILES
EST. POPULATION	8,055	51,106	163,170
EST. HOUSEHOLDS	3,028	18,548	60,695
EST. AVG. HH INCOME	\$77,040	\$89,713	\$88,063

ROUTE 130 TRAFFIC COUNT: 47,746 VPD *ESRI 2020



METRO[®]
COMMERCIAL
REAL ESTATE, INC.

MetroCommercial.com | PLYMOUTH MEETING, PA | MOUNT LAUREL, NJ

get in touch.

STEPHEN CARROZZA

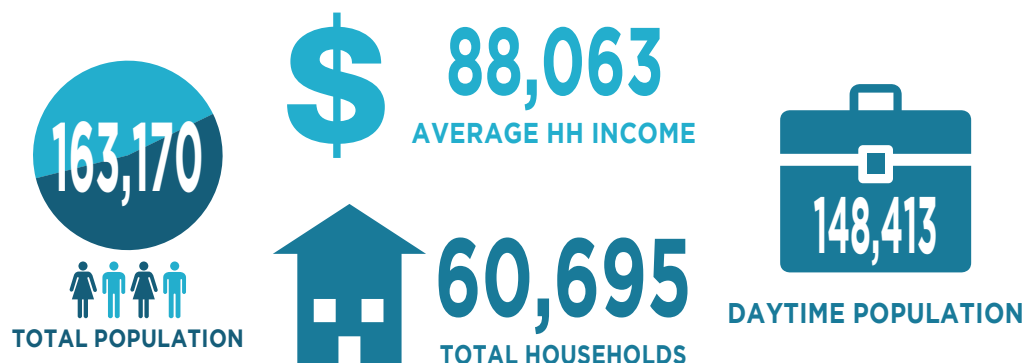
office 215.893.0300
direct 215.282.0154
scarrozza@metrocommercial.com

JONATHAN SPOERL

office 215.893.0300
direct 215.282.0157
jspoerl@metrocommercial.com

demographic highlights:

*DEMOGRAPHICS BASED ON A 5-MILE RADIUS



zoning:

Permitted Uses:

- Automotive repair service
- Care facilities
- Animal Hospital/Crematorium
- Contractor's off or shop
- Drive Through, Fast Food, or (Carry Out/ Delivery restaurants)
- Farm products warehouses, far, equipment, sales and service
- Farm/Farmer's Market
- Laundry/Laudromat/Drycleaning establishments
- Medical Facilities
- Mini – Storage facility
- Retail sales and service
- Site down restaurants
- Vehicle sales lot
- Vehicle service, repair, and/or body shop
- Wholesale establishment
- Commercial recreation facility
- Hospital
- Hotels and motels
- Kennel
- Shopping center
- School (private or public)
- Medical Laboratory

site data

- Acres: ±7.80 AC
- Square Foot: ±22,000 SF
- Zoning: Majority of the parcel is zoned HC-2 (Highway Corridor Districts)

Township: Burlington, NJ
County: Burlington County

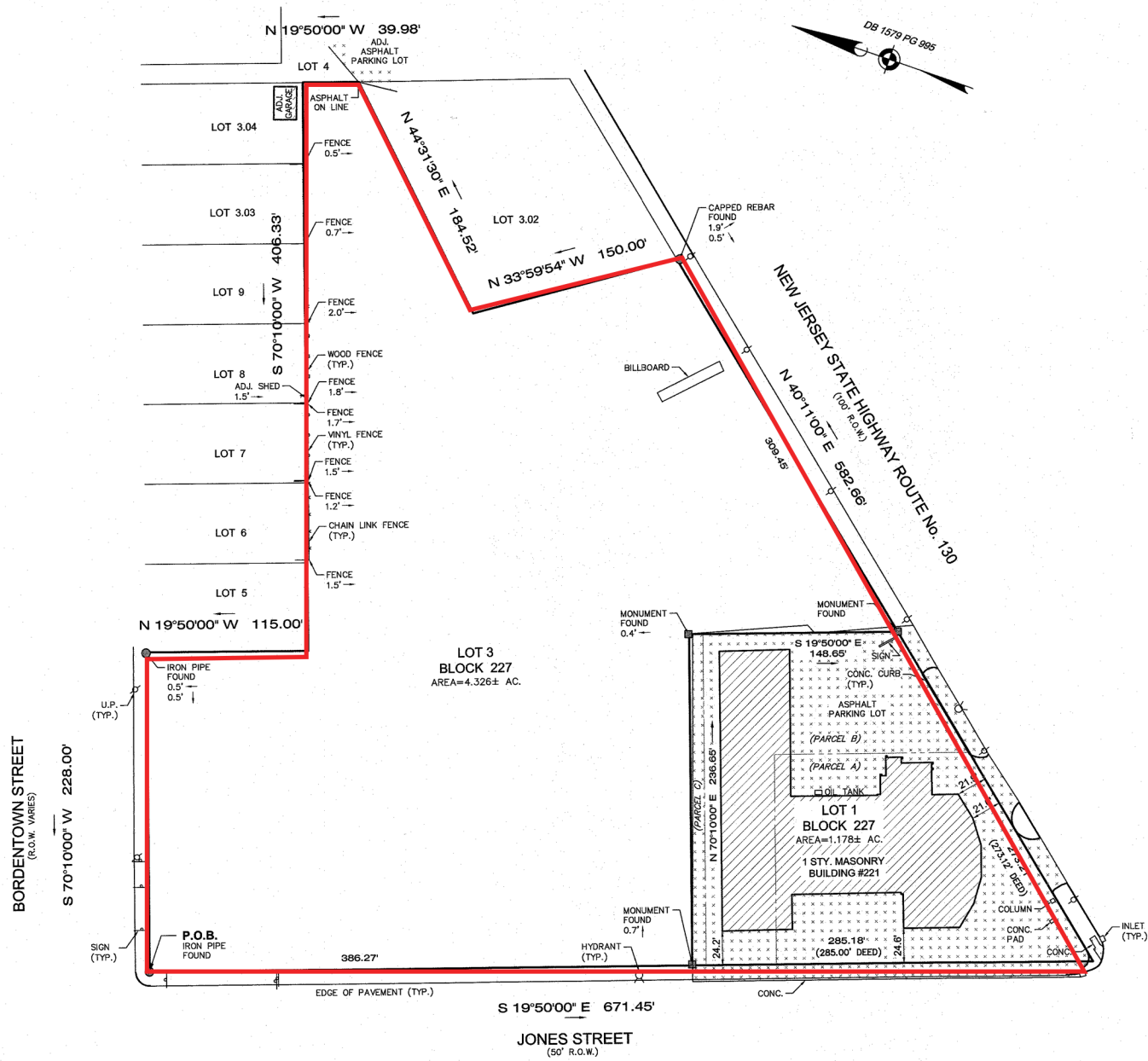
About Burlington:

Burlington is a city in Burlington County, NJ and is a suburb of Philadelphia. Burlington Township has a population of 162,520. The average Household income is \$82,159 and the estimated number of households is approximately 59,982.

The information and images contained herein are from sources deemed reliable. However, Metro Commercial Real Estate, Inc. makes no representation whatsoever as to their accuracy or authenticity. Images shown may be modified for illustrative purposes. Images may be out-of-date and not current. 10.12.20

909 EAST ROUTE 130
BURLINGTON, NJ

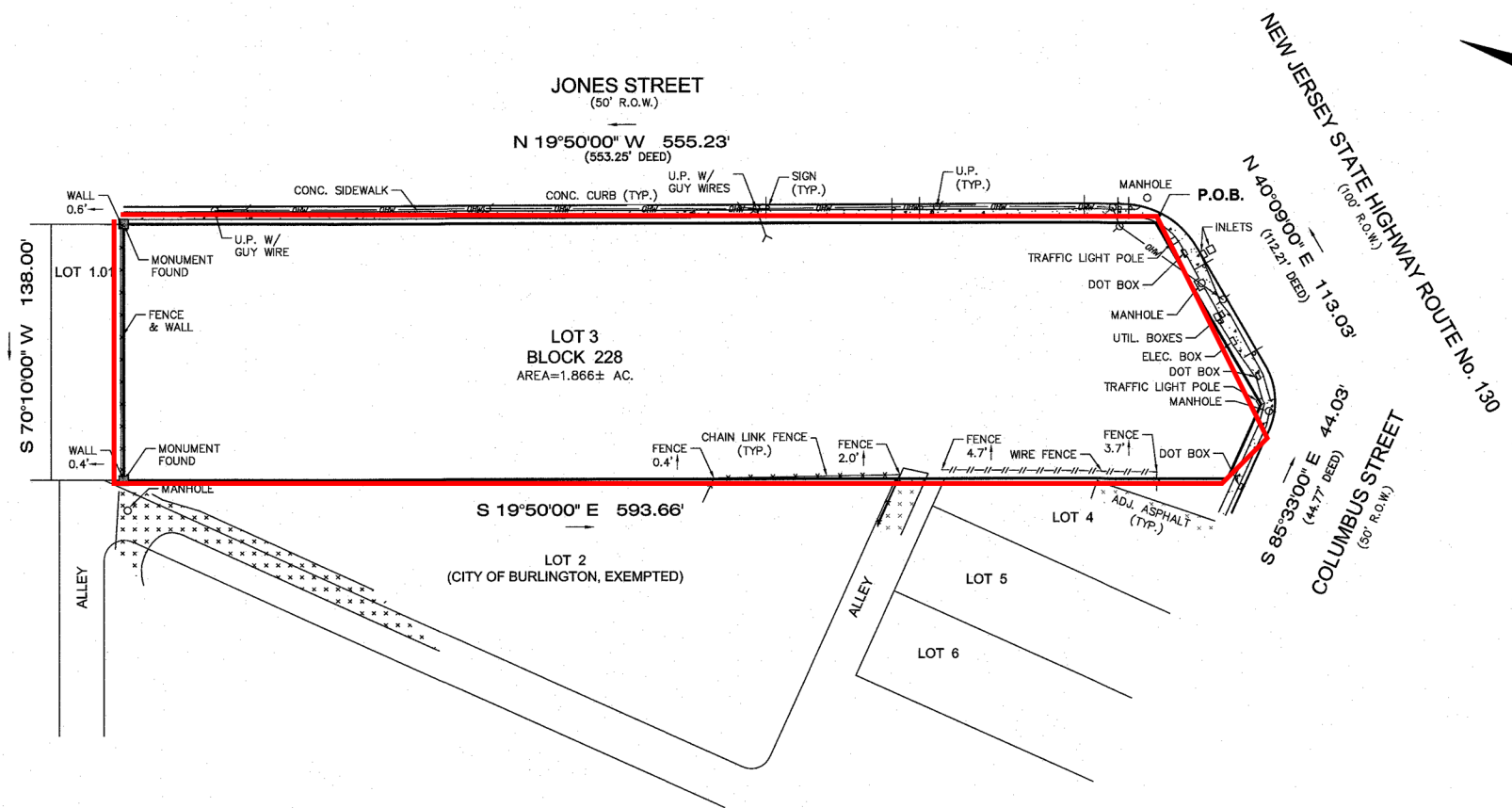
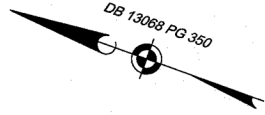




The information and images contained herein are from sources deemed reliable. However, Metro Commercial Real Estate, Inc. makes no representation whatsoever as to their accuracy or authenticity. Images shown may be modified for illustrative purposes. Images may be out-of-date and not current. 10.12.20

909 EAST ROUTE 130
BURLINGTON, NJ

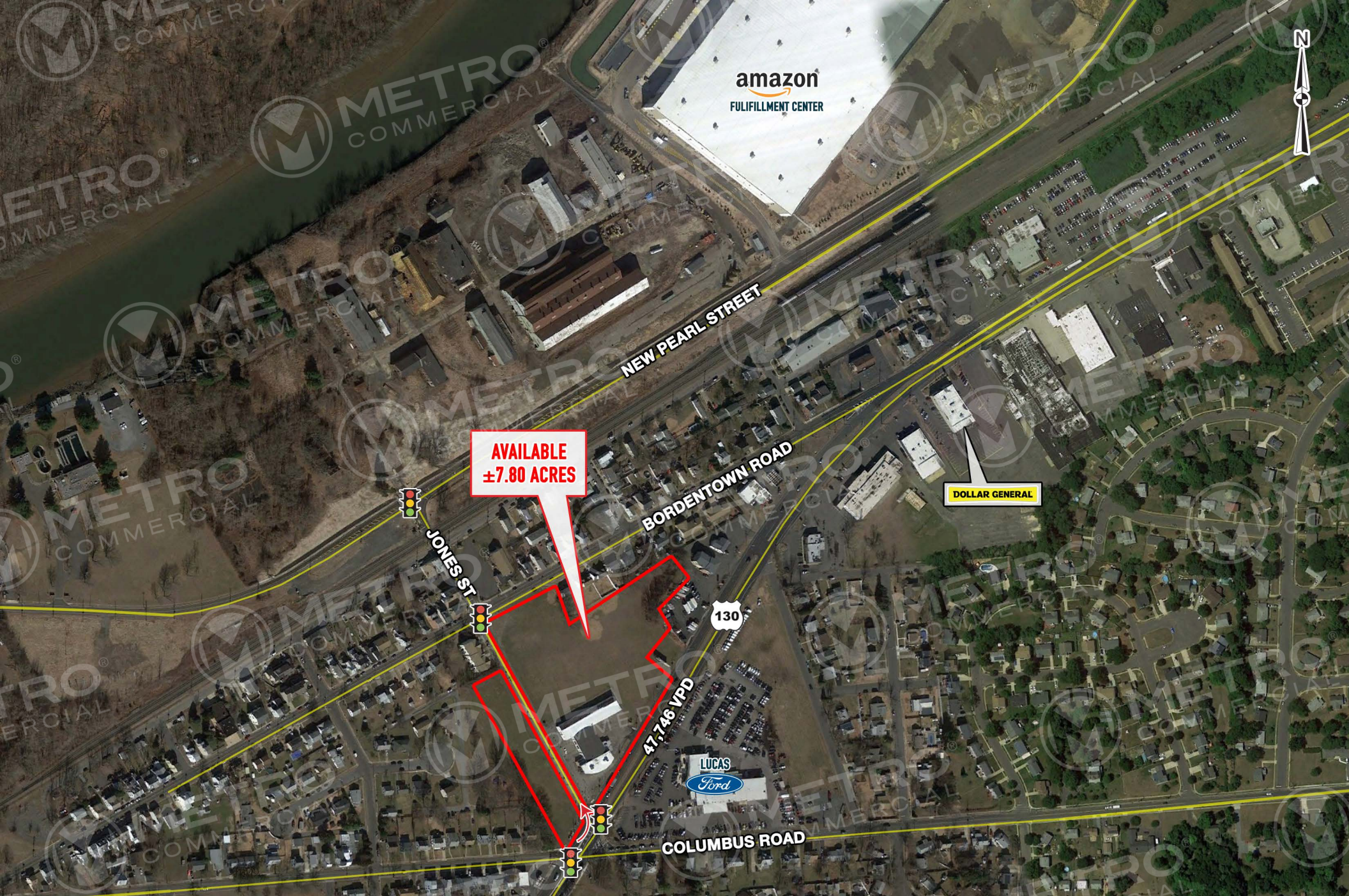




The information and images contained herein are from sources deemed reliable. However, Metro Commercial Real Estate, Inc. makes no representation whatsoever as to their accuracy or authenticity. Images shown may be modified for illustrative purposes. Images may be out-of-date and not current. 10.12.20

909 EAST ROUTE 130
BURLINGTON, NJ





amazon
FULFILLMENT CENTER

AVAILABLE
±7.80 ACRES

DOLLAR GENERAL

130

47,746 VPD

LUCAS
Ford

The information and images contained herein are from sources deemed reliable. However, Metro Commercial Real Estate, Inc. makes no representation whatsoever as to their accuracy or authenticity. Images shown may be modified for illustrative purposes. Images may be out-of-date and not current. 10.12.20

909 EAST ROUTE 130
BURLINGTON, NJ





**AVAILABLE
±7.80 ACRES**

BORDERTOWN ROAD

ALADDIN TRUCK SALES

JONES STREET

47,746 VPD

130

LUCAS



COLUMBUS ROAD

The information and images contained herein are from sources deemed reliable. However, Metro Commercial Real Estate, Inc. makes no representation whatsoever as to their accuracy or authenticity. Images shown may be modified for illustrative purposes. Images may be out-of-date and not current. 10.12.20

**909 EAST ROUTE 130
BURLINGTON, NJ**





PHILADELPHIA MILLS
 OWNER: SIMON
 GLA: 1,700,000 SF
 JCPenney
 Sears
 Marshalls
 Burlington
 BED BATH & BEYOND
 MODEL'S SPORTING GOODS
 Walmart SUPERCENTER

CITY AUTO PARK
 DODGE
 CHRYSLER
 Jeep

BURLINGTON
 LIBERTY TOYOTA

WILLINGBORO TOWN CENTER
 ACME
 STRAYER UNIVERSITY
 Penn Medicine
 Rowan College BURLINGTON COUNTY

SITE

Bj's
 DISTRIBUTION CENTER

amazon
 FULFILLMENT CENTER

DOLLAR GENERAL

Walmart ACME Party City Marshalls

ShopRite

BURLINGTON CENTER MALL

REGAL CINEMAS

TARGET THE HOME DEPOT DICK'S SPORTING GOODS

Burlington
 DISTRIBUTION CENTER

Burlington
 CORPORATE OFFICE

DOLLAR TREE

LUCAS Ford

DAVIS Honda Walgreens

meineke
 car care center

Save a lot

DUNKIN' DONUTS
 Primo Hoagies

Billows
 ELECTRIC SUPPLY

FERGUSON

Burlington
 McDonald's

KOHL'S petco STAPLES ROSS

PEPBOYS AUTO

Sams CLUB

BIG LOTS!

AutoZone

PEPBOYS AUTO

ALDI

The information and images contained herein are from sources deemed reliable. However, Metro Commercial Real Estate, Inc. makes no representation whatsoever as to their accuracy or authenticity. Images shown may be modified for illustrative purposes. Images may be out-of-date and not current. 10.12.20

**909 EAST ROUTE 130
 BURLINGTON, NJ**

