

1701 EAST PASSYUNK AVENUE

PHILADELPHIA, PA

± 2,000 SF-13,632 SF AVAILABLE FOR LEASE

JOIN



barcelona
COMING SOON

LOS CABALLITOS
CANTINA

B I R R A



property highlights.

- First floor can be demised ±2,000-6,858 SF
- Prominent corner location on Philadelphia's hottest block!
- ±13,632 SF building available for lease across 2 floors
- ±6,858 SF on first floor, ±6,774 SF on second floor
- 58' of frontage along Passyunk Avenue

stats.

2016 DEMOGRAPHICS*	.25 MILE	.5 MILE	1 MILE
EST. POPULATION	7,620	30,651	111,573
EST. HOUSEHOLDS	3,568	12,654	46,276
EST. AVG. HH INCOME	\$51,537	\$46,038	\$50,917

*ESRI 2016



METRO[®]
COMMERCIAL
REAL ESTATE, INC.

MetroCommercial.com | PHILADELPHIA, PA | PLYMOUTH MEETING, PA | MOUNT LAUREL, NJ | NAPLES, FL

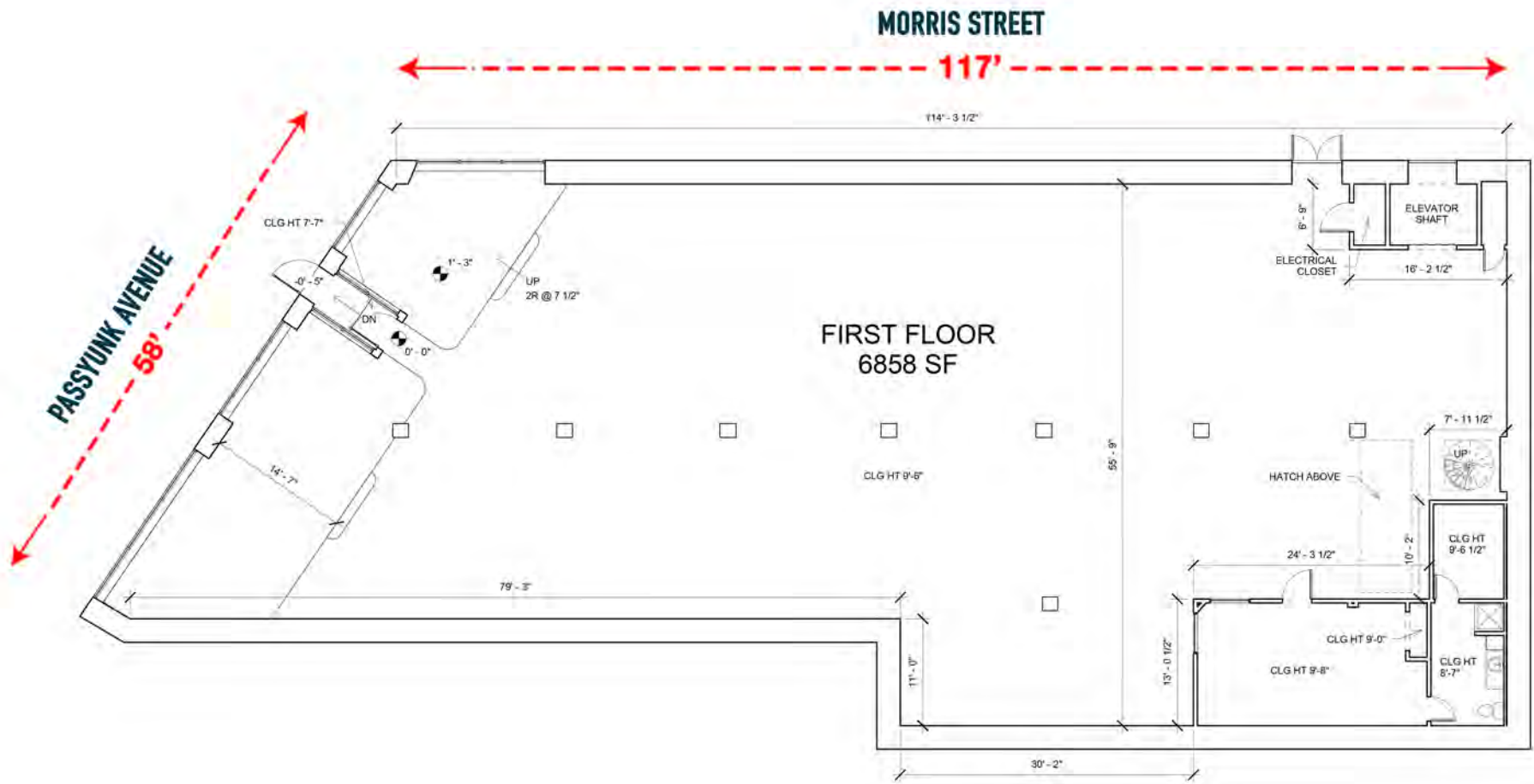
get in touch.

STEPHEN CARROZZA

office 215.893.0300
direct 215.282.0154
scarrozza@metrocommercial.com

MICHAEL GORMAN

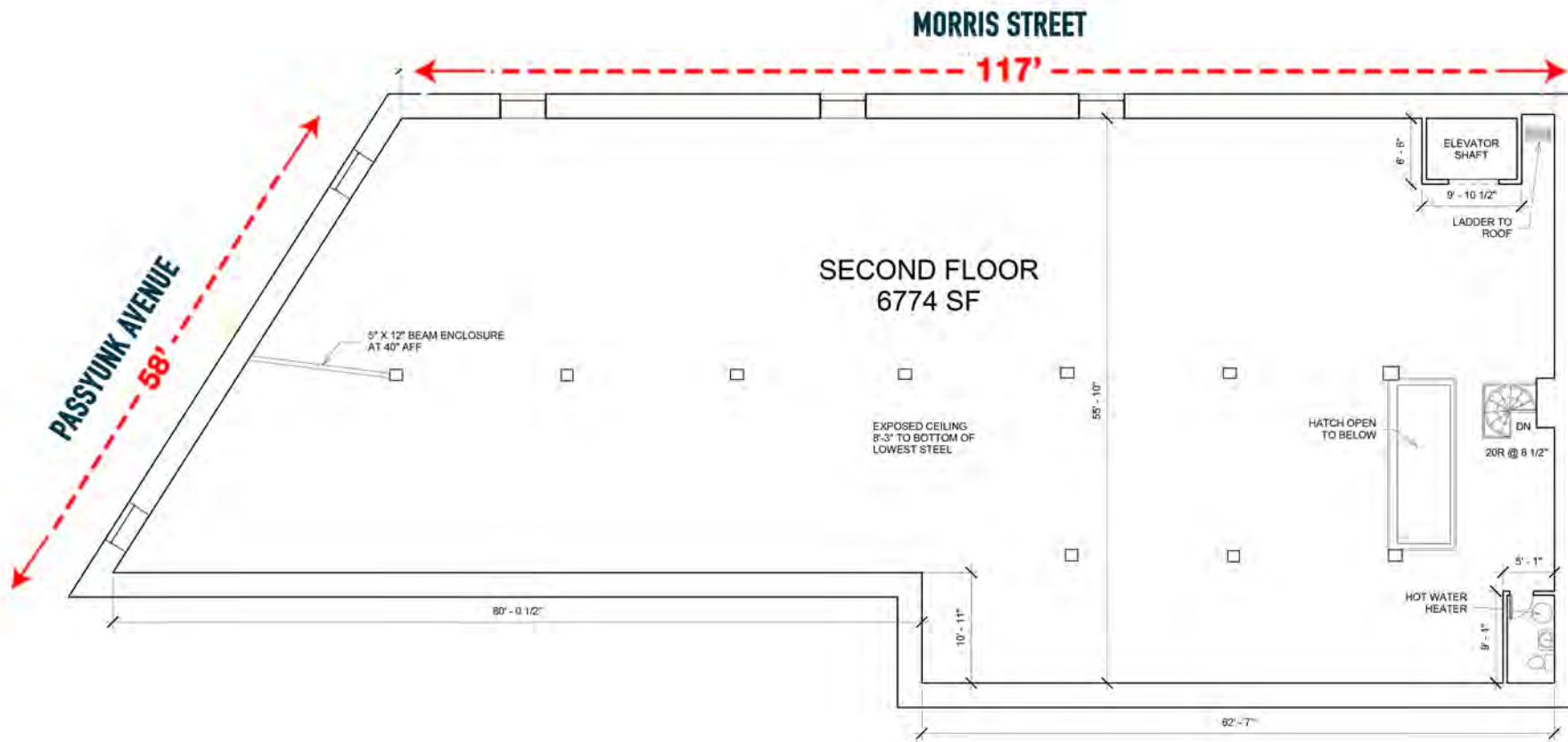
office 215.893.0300
direct 215.282.0152
mgorman@metrocommercial.com



The information and images contained herein are from sources deemed reliable. However, Metro Commercial Real Estate, Inc. makes no representation whatsoever as to their accuracy or authenticity. Images shown may be modified for illustrative purposes. Images may be out-of-date and not current. 2.15.17

1701 EAST PASSYUNK AVENUE
PHILADELPHIA, PA

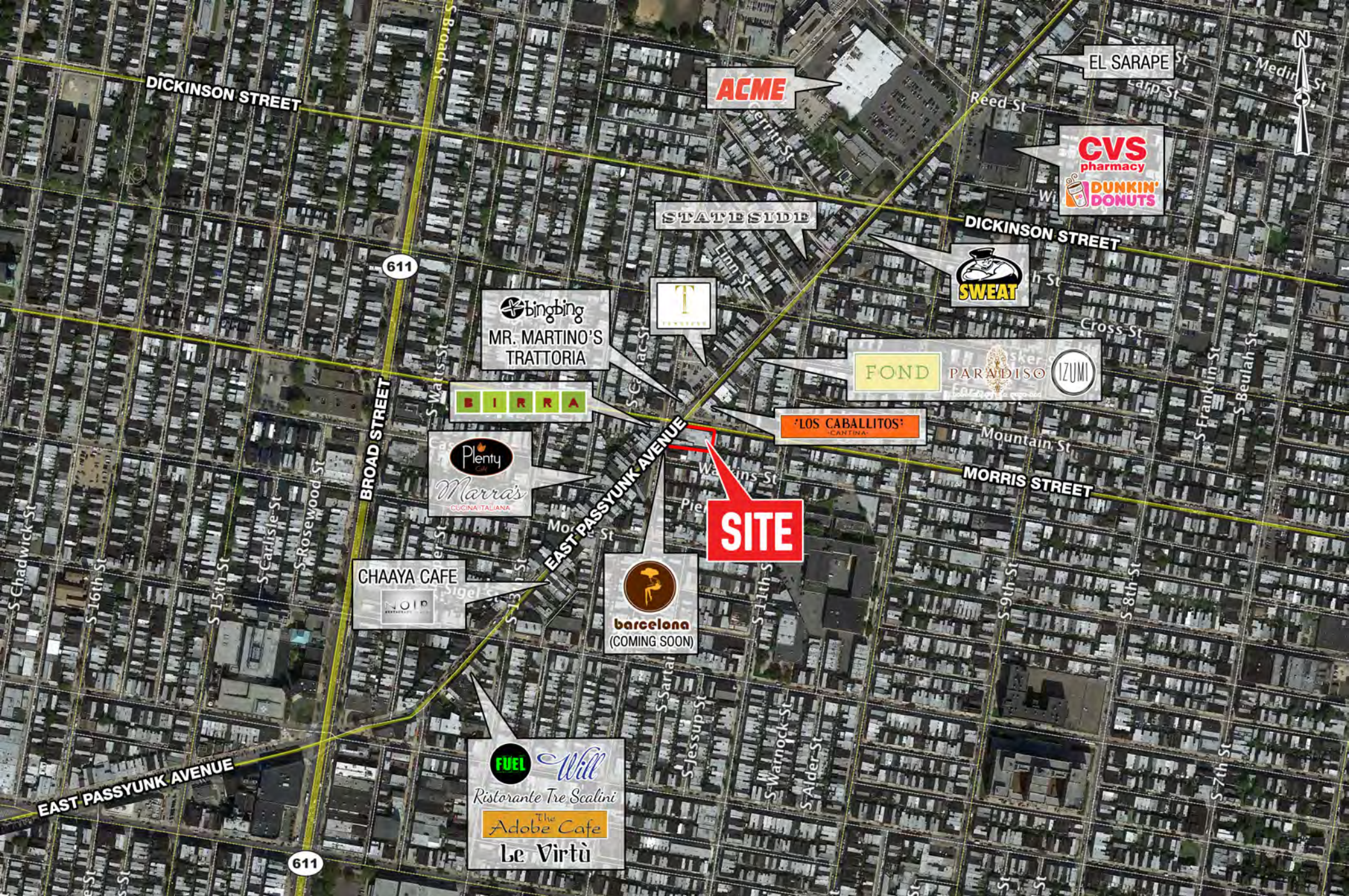




The information and images contained herein are from sources deemed reliable. However, Metro Commercial Real Estate, Inc. makes no representation whatsoever as to their accuracy or authenticity. Images shown may be modified for illustrative purposes. Images may be out-of-date and not current. 2.15.17

1701 EAST PASSYUNK AVENUE
PHILADELPHIA, PA

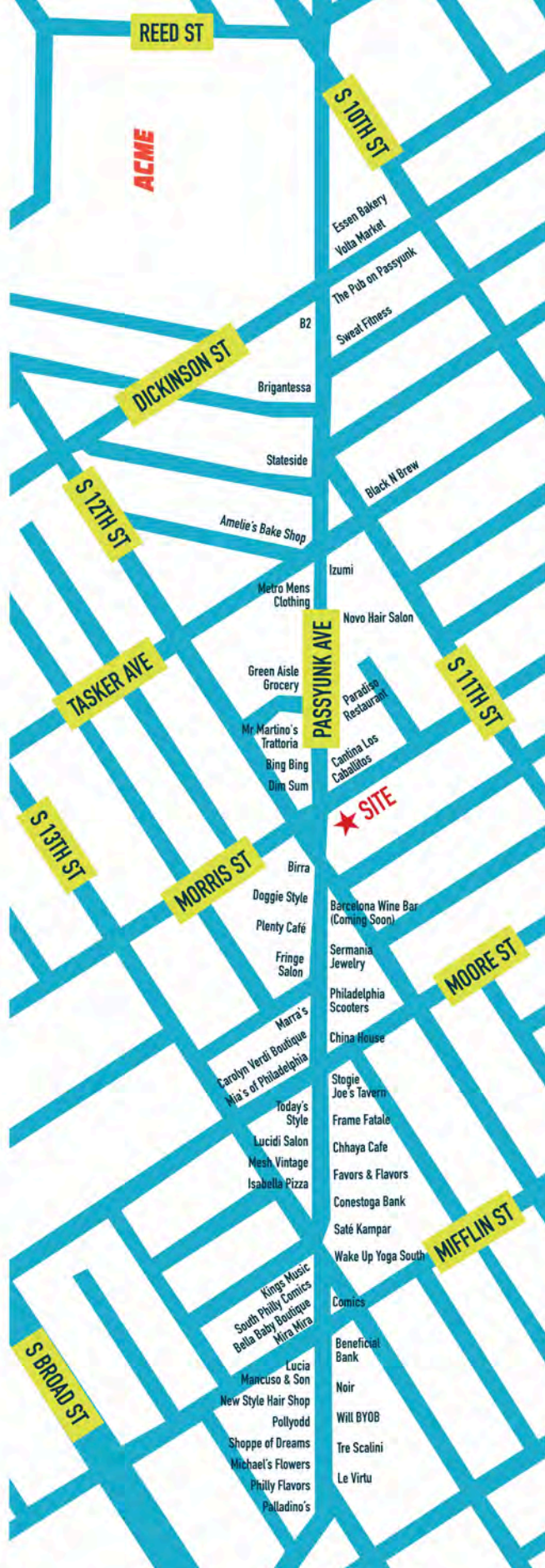




The information and images contained herein are from sources deemed reliable. However, Metro Commercial Real Estate, Inc. makes no representation whatsoever as to their accuracy or authenticity. Images shown may be modified for illustrative purposes. Images may be out-of-date and not current. 2.15.17

**1701 EAST PASSYUNK AVENUE
PHILADELPHIA, PA**





The information and images contained herein are from sources deemed reliable. However, Metro Commercial Real Estate, Inc. makes no representation whatsoever as to their accuracy or authenticity. Images shown may be modified for illustrative purposes. Images may be out-of-date and not current. 2.15.17

**1701 EAST PASSYUNK AVENUE
PHILADELPHIA, PA**

