

SCHOOL HOUSE CENTER 1034 SECOND STREET PIKE

RICHBORO, PA 18954

±3,100 SF AVAILABLE FOR LEASE

JOIN

verizon **CVS**
pharmacy

NovaCare
REHABILITATION



property highlights.

- Nearby tenants: **GIANT** **RITE AID**
Walgreens **AT&T** **ACME**
Citizens Bank **DOLLAR TREE**
- Highly visible end cap in neighborhood shopping center
- “Main and Main” location in affluent Richboro trade area
- Shadow-anchored by incoming Giant grocery store

stats.

2020 DEMOGRAPHICS*	1 MILE	3 MILES	5 MILES
EST. POPULATION	5,725	41,367	132,937
EST. HOUSEHOLDS	1,999	15,173	50,908
EST. AVG. HH INCOME	\$172,268	\$143,257	\$131,814

SECOND STREET PIKE TRAFFIC COUNT: 19,755 VPD *ESRI 2020



METRO[®]
COMMERCIAL
REAL ESTATE, INC.

MetroCommercial.com | PLYMOUTH MEETING, PA | MOUNT LAUREL, NJ

get in touch.

SCOTT BENSON

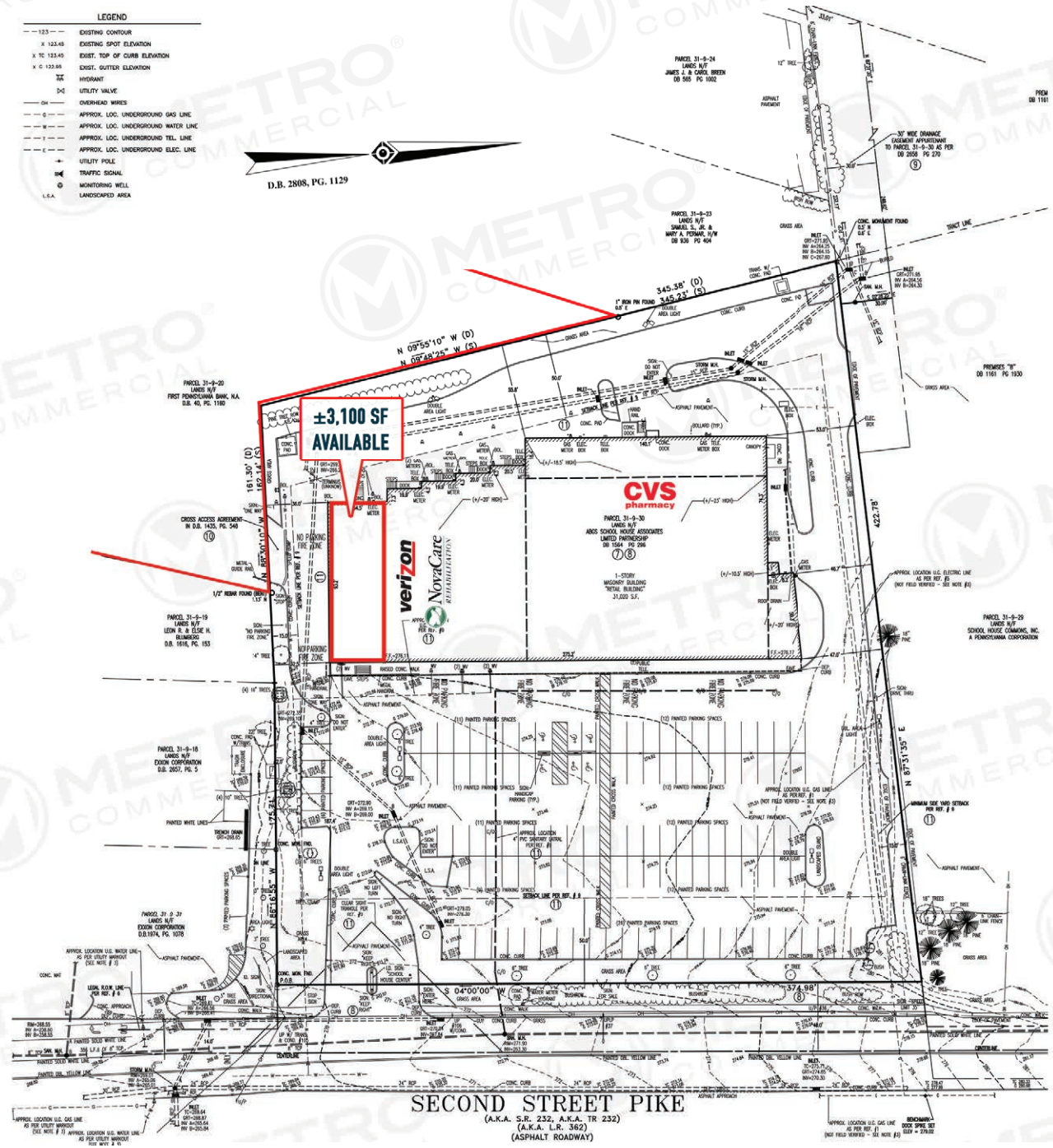
office 215.893.0300
direct 215.282.0153
sbenson@metrocommercial.com

JONATHAN SPOERL

office 215.893.0300
direct 215.282.0150
jspoerl@metrocommercial.com

LEGEND

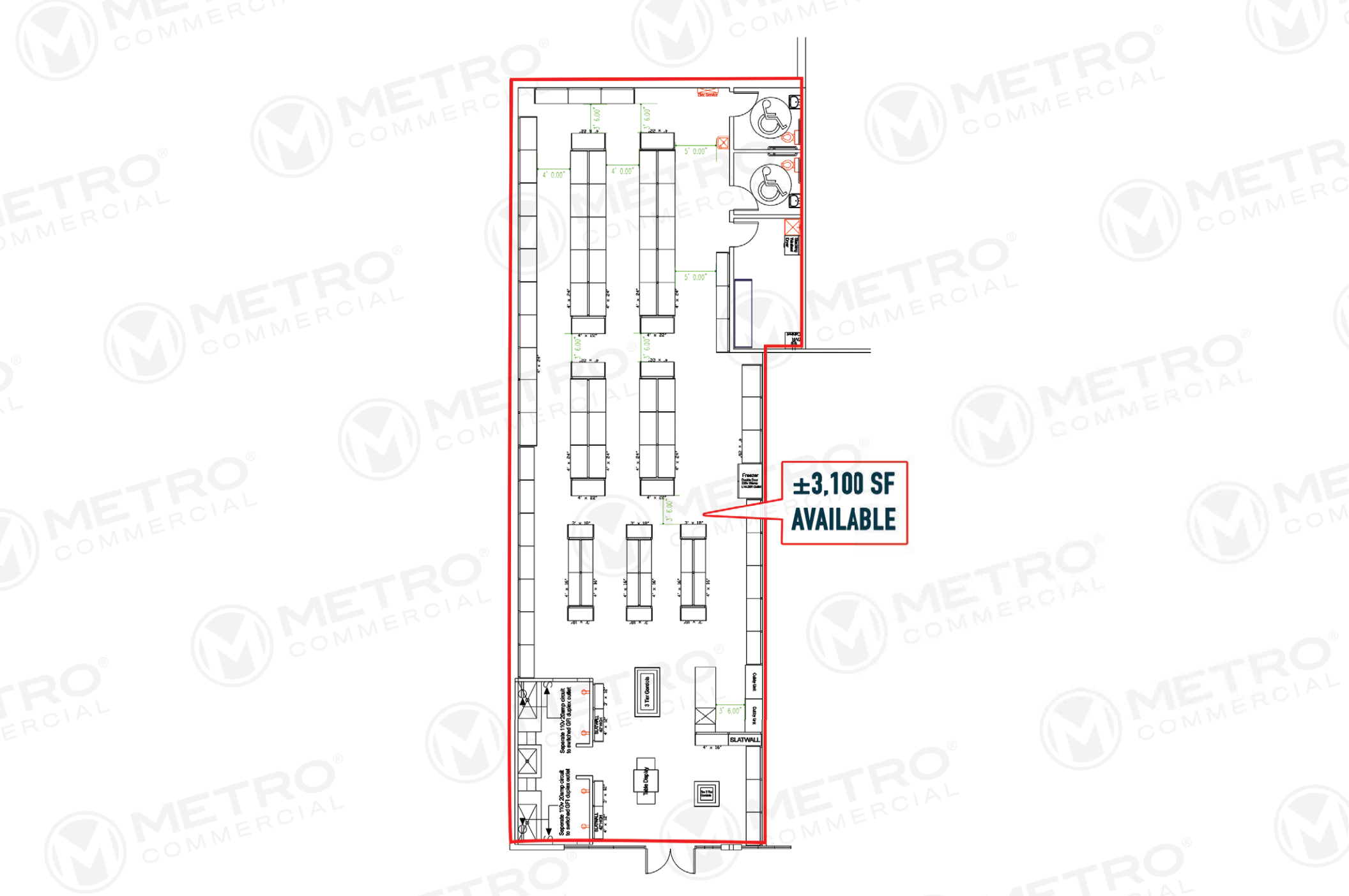
- EXISTING CONTOUR
- X 123.45 EXISTING SPOT ELEVATION
- X TO 123.45 EXIST. TOP OF CURB ELEVATION
- X @ 123.45 EXIST. GUTTER ELEVATION
- HIGHWAY
- ⊕ UTILITY VALVE
- OVERHEAD WIRES
- APPROX. LOC. UNDERGROUND GAS LINE
- APPROX. LOC. UNDERGROUND WATER LINE
- APPROX. LOC. UNDERGROUND TEL. LINE
- APPROX. LOC. UNDERGROUND ELEC. LINE
- UTILITY POLE
- ⊕ TRAFFIC SIGNAL
- ⊕ MONITORING WELL
- L.S.A. LANDSCAPED AREA



The information and images contained herein are from sources deemed reliable. However, Metro Commercial Real Estate, Inc. makes no representation whatsoever as to their accuracy or authenticity. Images shown may be modified for illustrative purposes. Images may be out-of-date and not current. 1.25.21

SCHOOL HOUSE CENTER RICHBORO, PA



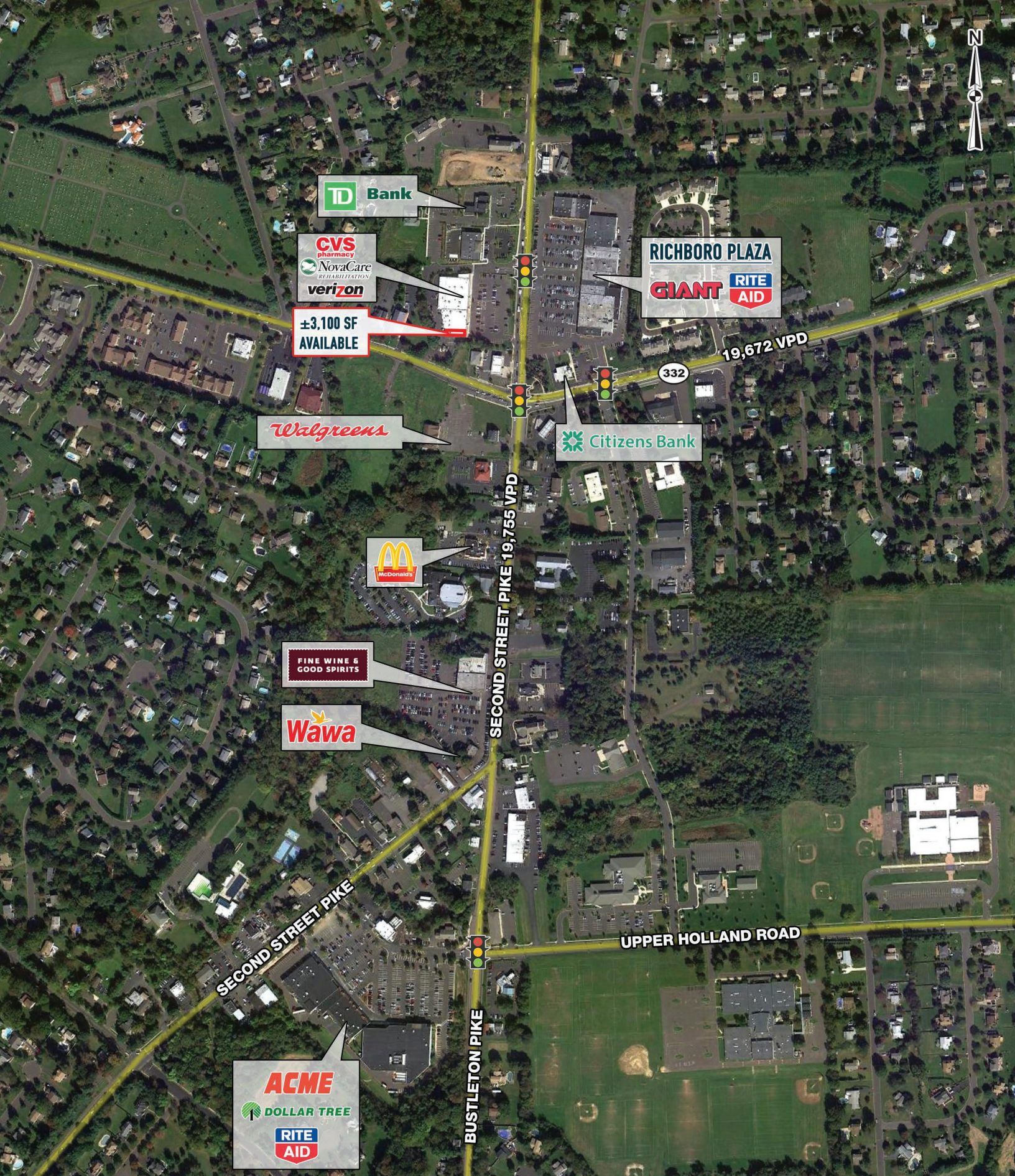


**±3,100 SF
AVAILABLE**

The information and images contained herein are from sources deemed reliable. However, Metro Commercial Real Estate, Inc. makes no representation whatsoever as to their accuracy or authenticity. Images shown may be modified for illustrative purposes. Images may be out-of-date and not current. 1.25.21

**SCHOOL HOUSE CENTER
RICHBORO, PA**





The information and images contained herein are from sources deemed reliable. However, Metro Commercial Real Estate, Inc. makes no representation whatsoever as to their accuracy or authenticity. Images shown may be modified for illustrative purposes. Images may be out-of-date and not current. 1.29.18

SCHOOL HOUSE CENTER RICHBORO, PA



