

216 EAST LANCASTER AVENUE

WAYNE, PA

±9,500 SF AVAILABLE – DIVISIBLE



property highlights.

- Wayne's Primary Retail & Restaurant Corridor
- Walking Distance to Paoli/Thorndale Line
- 38 Dedicated Parking Spaces
- Ideal for restaurant, retail, service oriented businesses, medical/office
- Multiple configurations available

stats.

2021 DEMOGRAPHICS*	1 MILE	3 MILES	5 MILES
EST. POPULATION	10,938	53,848	158,379
EST. HOUSEHOLDS	3,643	18,342	61,819
EST. AVG. HH INCOME	\$203,097	\$209,299	\$172,709

EAST LANCASTER AVENUE TRAFFIC COUNT: 22,189 VPD *ESRI 2021



METRO[®]
COMMERCIAL
REAL ESTATE, INC.

MetroCommercial.com | PLYMOUTH MEETING, PA | MOUNT LAUREL, NJ

get in touch.

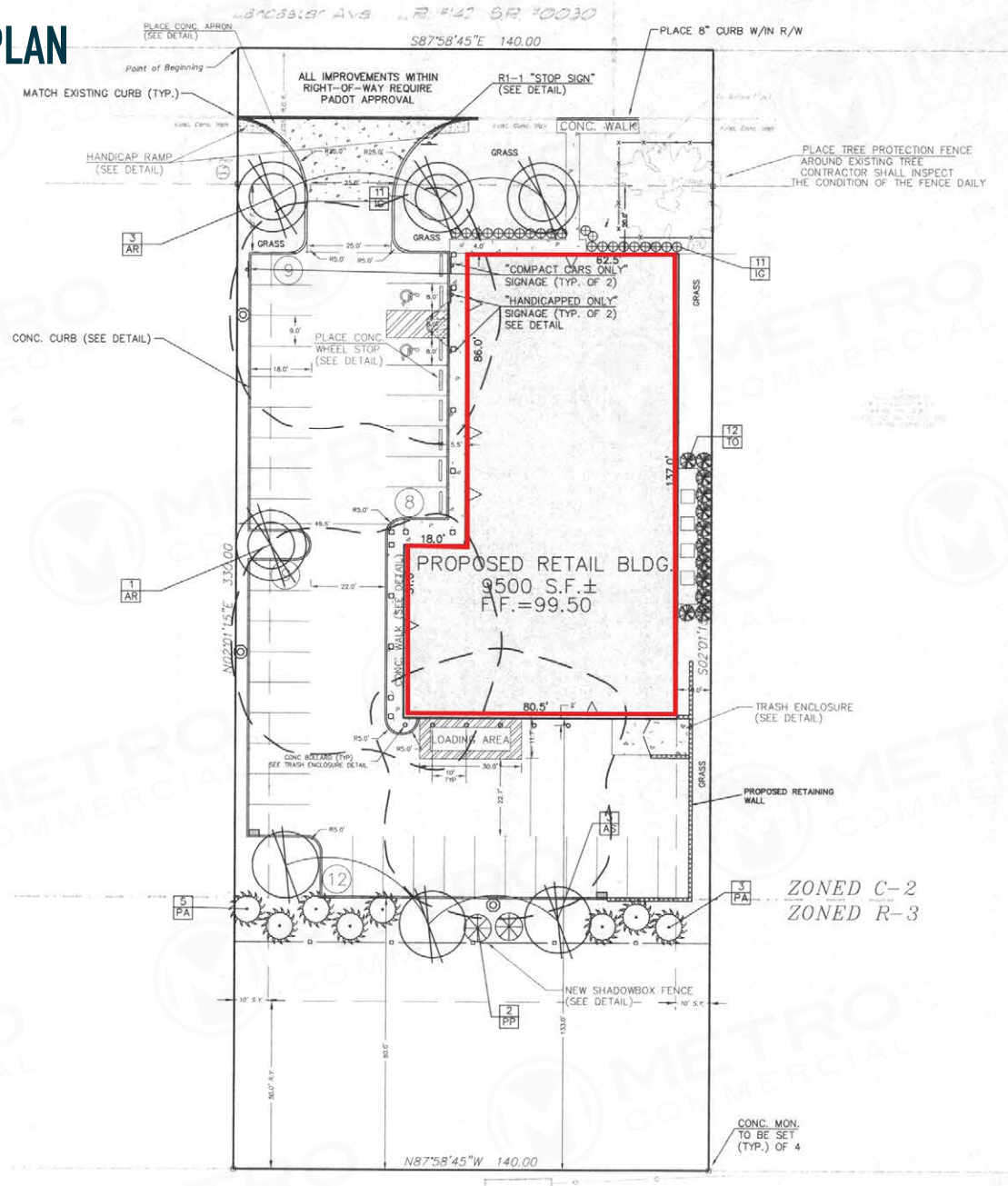
SCOTT BENSON

office 215.893.0300
direct 215.282.0158
sbenson@metrocommercial.com

STEVE NIGGEMAN

office 610.825.5222
direct 610.260.2667
sniggeman@metrocommercial.com

EXISTING CONDITIONS PLAN

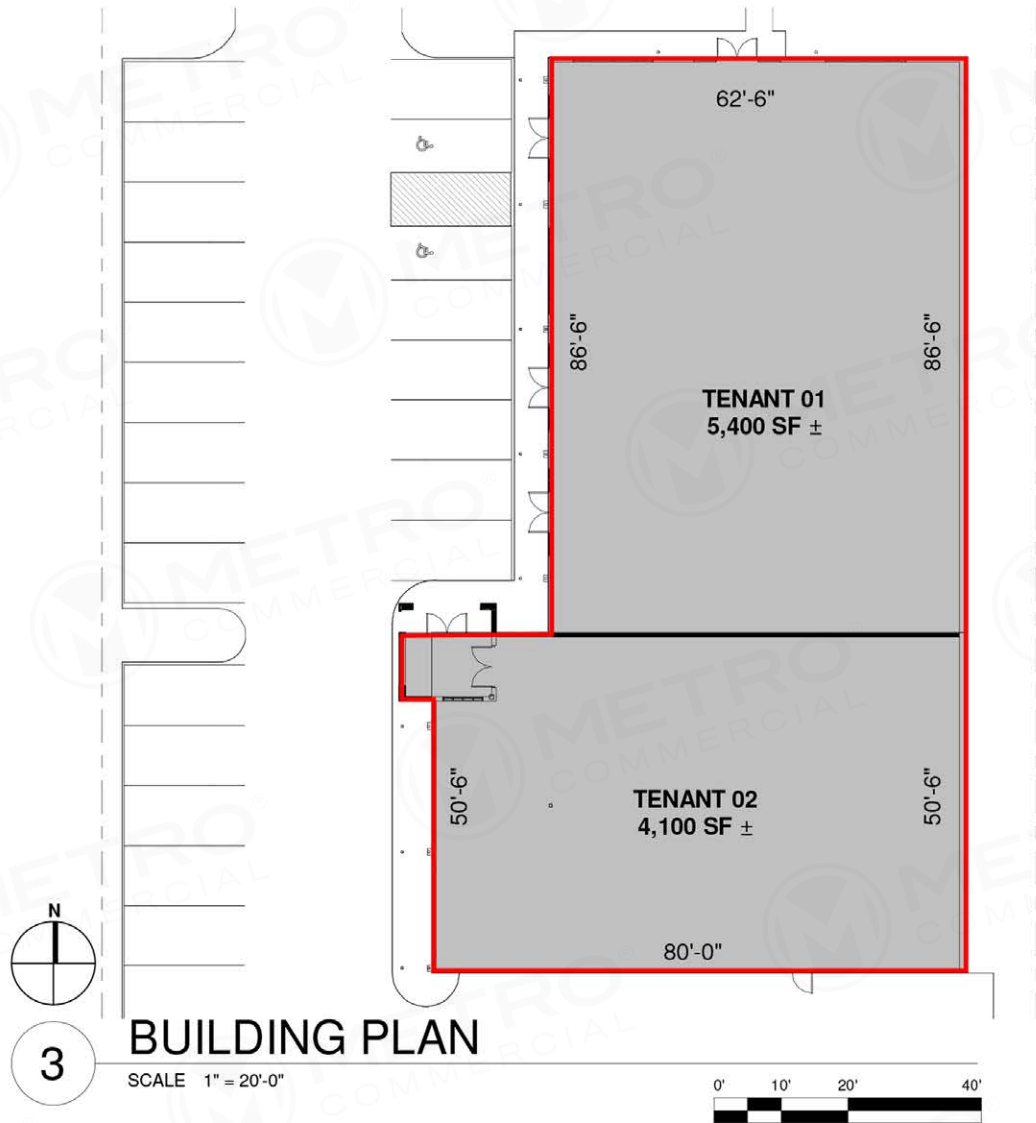
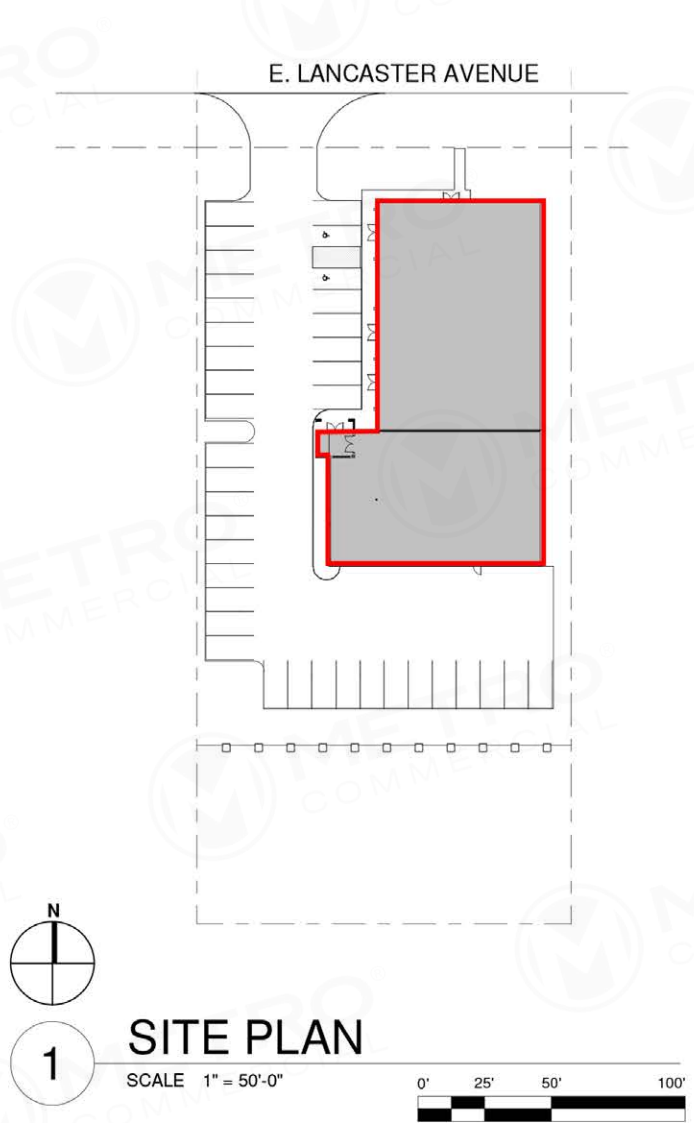


The information and images contained herein are from sources deemed reliable. However, Metro Commercial Real Estate, Inc. makes no representation whatsoever as to their accuracy or authenticity. Images shown may be modified for illustrative purposes. Images may be out-of-date and not current. 7.14.21

216 EAST LANCASTER AVENUE
WAYNE, PA



PROPOSED DEMISING PLAN





Bank of America

PROPOSED
sweetgreen

RITE
AID

EAST LANCASTER AVENUE 22, 189 VPD

TD Bank

PROPOSED
REDEVELOPMENT

at&t

BEER YARD

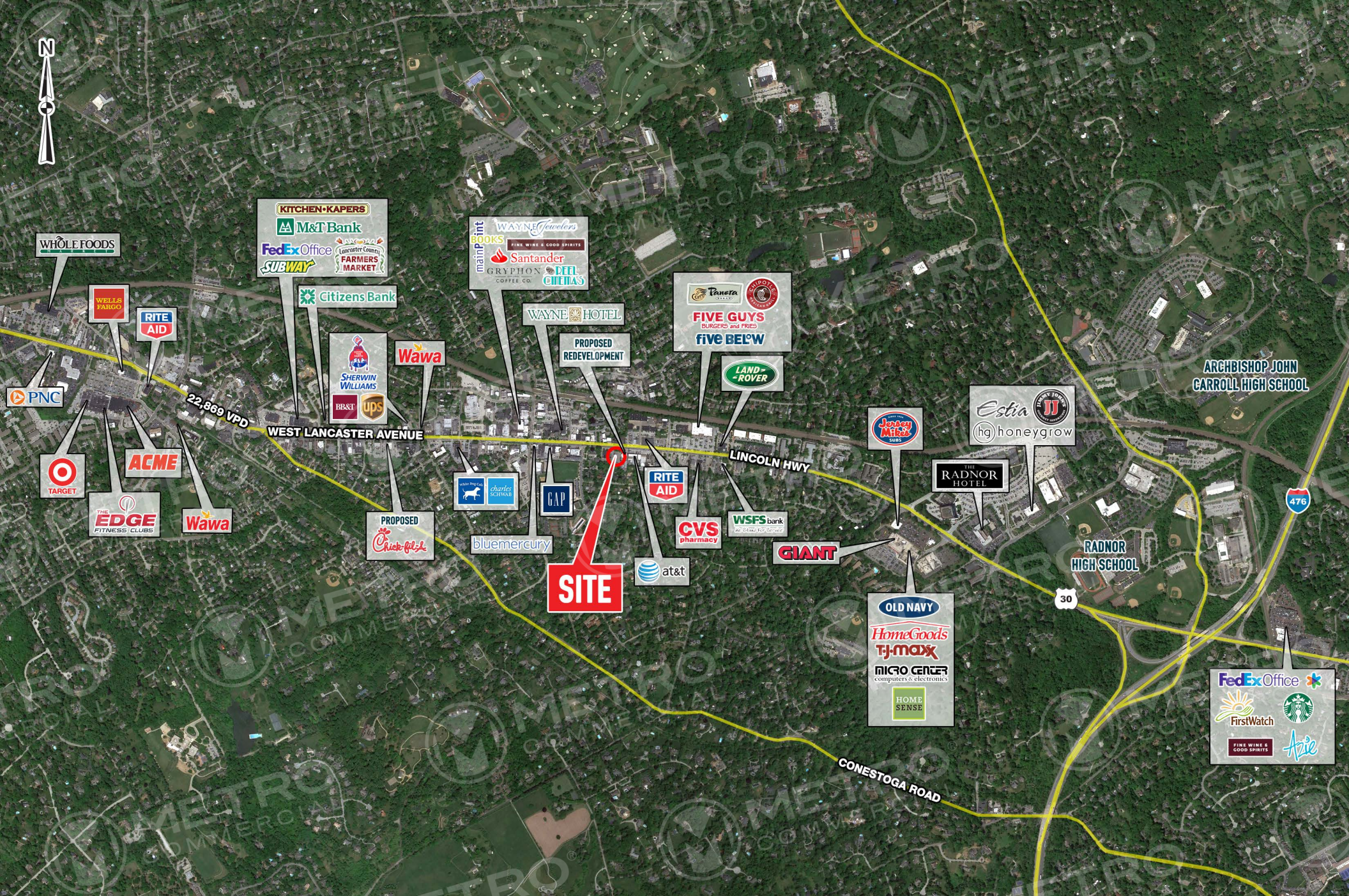
SITE

LOUELLA AVENUE

216 EAST LANCASTER AVENUE
WAYNE, PA



The information and images contained herein are from sources deemed reliable. However, Metro Commercial Real Estate, Inc. makes no representation whatsoever as to their accuracy or authenticity. Images shown may be modified for illustrative purposes. Images may be out-of-date and not current. 7.14.21



The information and images contained herein are from sources deemed reliable. However, Metro Commercial Real Estate, Inc. makes no representation whatsoever as to their accuracy or authenticity. Images shown may be modified for illustrative purposes. Images may be out-of-date and not current. 7.14.21

216 EAST LANCASTER AVENUE
WAYNE, PA

