

1200 VETERANS HIGHWAY

BRISTOL, PA

±1 ACRE AVAILABLE FOR SALE OR LEASE



property highlights.

- Immediate access from I95 South off ramp
- Access at traffic light with left turn lanes
- Dense and active day part
- Ideal for restaurant, auto, or convenience

stats.

2018 DEMOGRAPHICS*	1 MILE	3 MILES	5 MILES
EST. POPULATION	7,507	82,476	225,157
EST. HOUSEHOLDS	2,724	30,922	83,889
EST. AVG. HH INCOME	\$68,201	\$75,952	\$82,577

VETERANS HIGHWAY 29,567 VPD *ESRI 2018



METRO[®]
COMMERCIAL
REAL ESTATE, INC.

MetroCommercial.com | PHILADELPHIA, PA | PLYMOUTH MEETING, PA | MOUNT LAUREL, NJ | NAPLES, FL

get in touch.

SCOTT BENSON

office 215.893.0300
direct 215.282.0158
sbenson@metrocommercial.com

STEPHEN CARROZZA

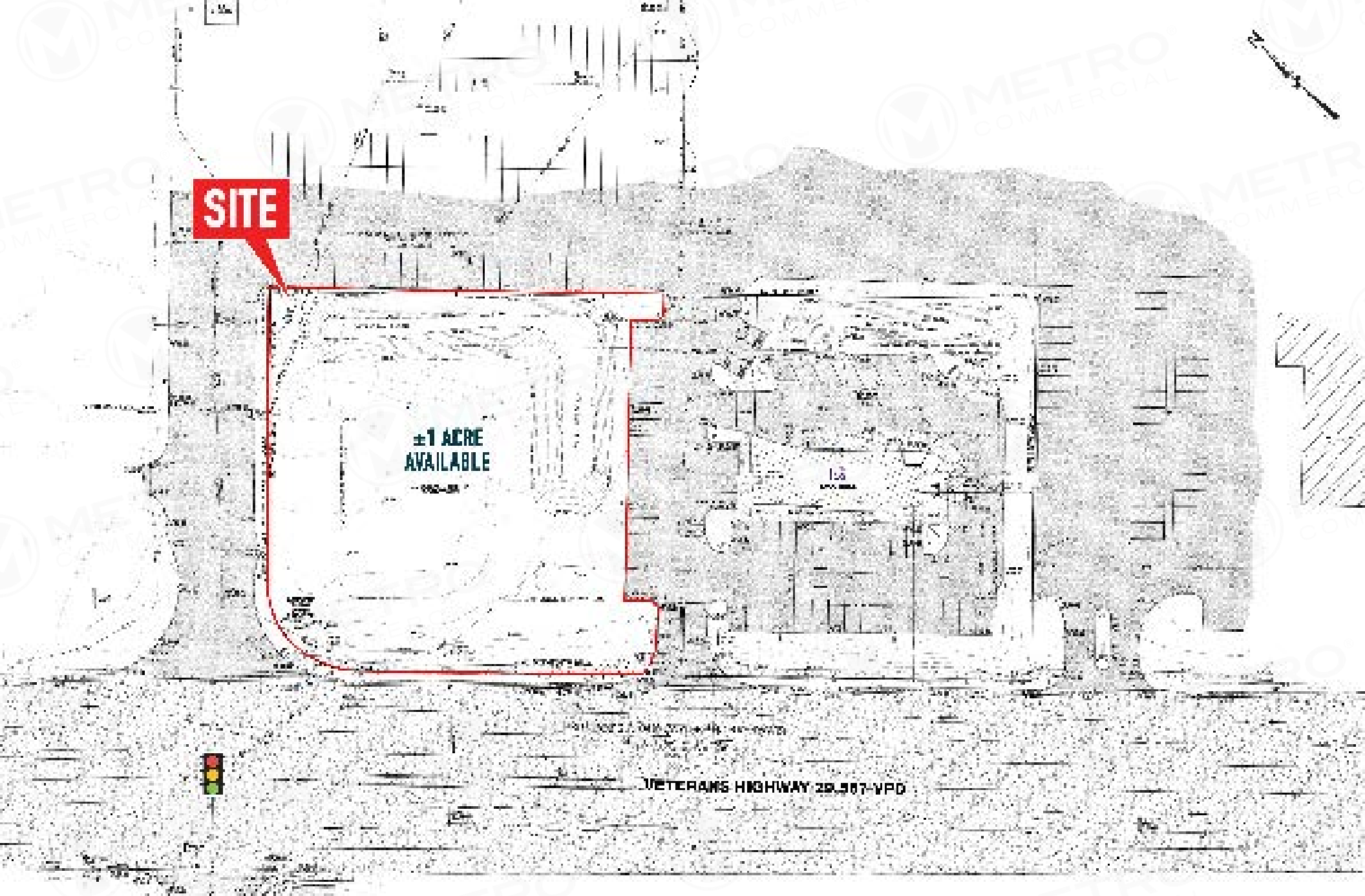
office 215.893.0300
direct 215.282.0154
scarrozza@metrocommercial.com



The information and images contained herein are from sources deemed reliable. However, Metro Commercial Real Estate, Inc. makes no representation whatsoever as to their accuracy or authenticity. Images shown may be modified for illustrative purposes. Images may be out-of-date and not current. 6.20.17

**1200 VETERANS HIGHWAY
BRISTOL, PA**





SITE

**±1 ACRE
AVAILABLE**

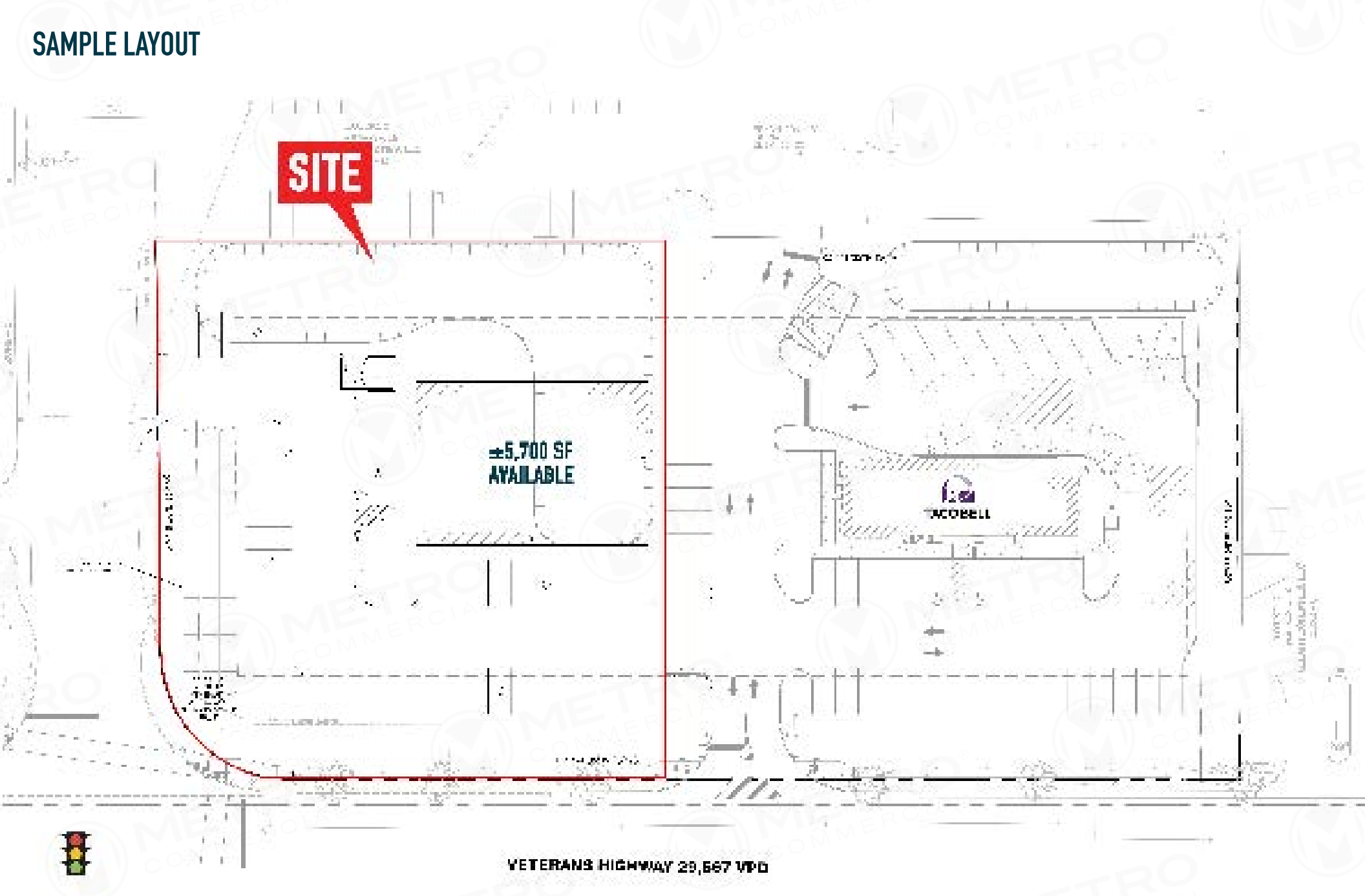
VETERANS HIGHWAY 29, 907-VPD

The information and images contained herein are from sources deemed reliable. However, Metro Commercial Real Estate, Inc. makes no representation whatsoever as to their accuracy or authenticity. Images shown may be modified for illustrative purposes. Images may be out-of-date and not current. 6.20.17

**1200 VETERANS HIGHWAY
BRISTOL, PA**



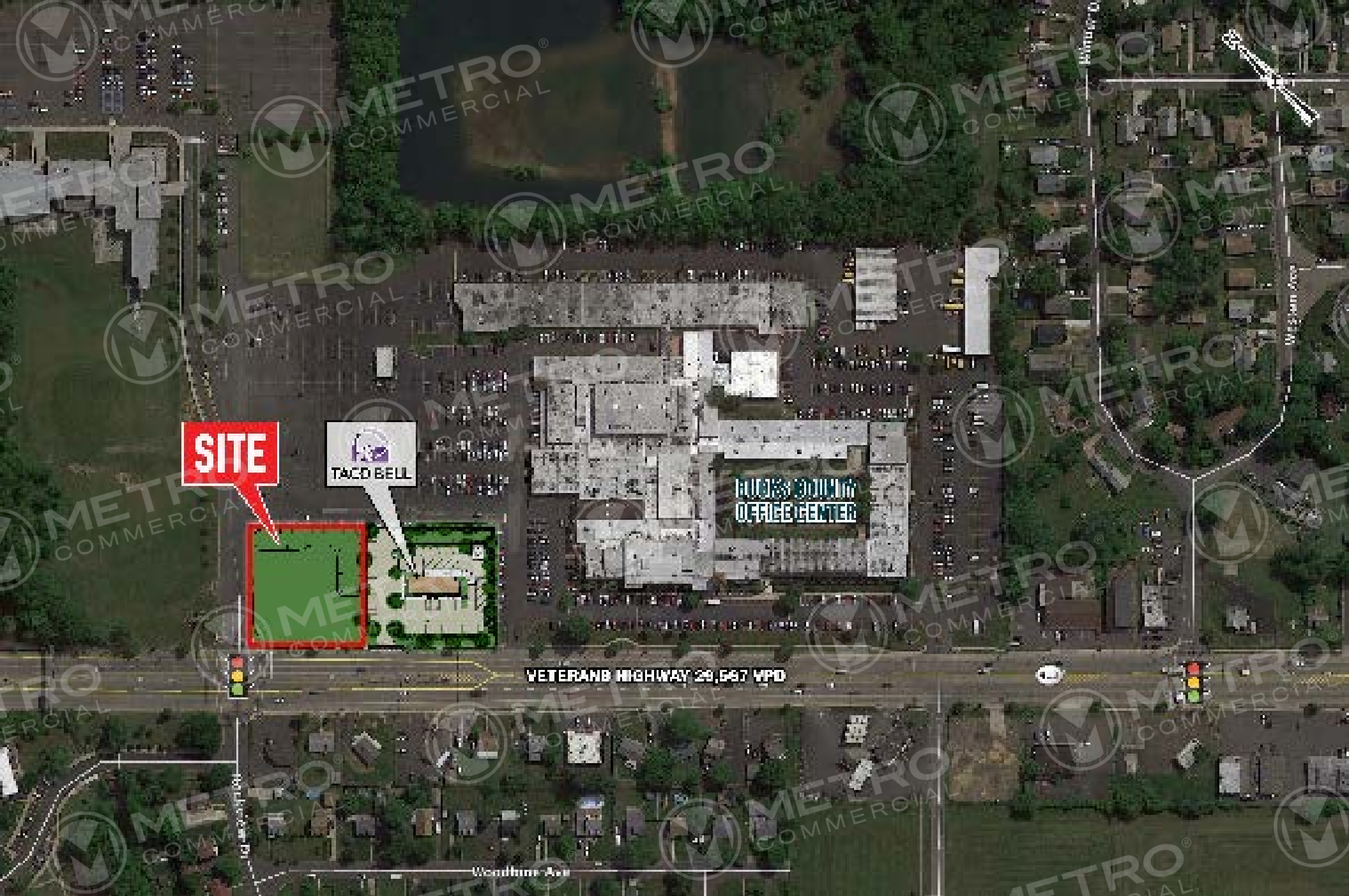
SAMPLE LAYOUT



The information and images contained herein are from sources deemed reliable. However, Metro Commercial Real Estate, Inc. makes no representation whatsoever as to their accuracy or authenticity. Images shown may be modified for illustrative purposes. Images may be out-of-date and not current. 6.20.17

1200 VETERANS HIGHWAY
BRISTOL, PA





SITE

TACO BELL

HUGHES COUNTY OFFICE CENTER

VETERANS HIGHWAY 29,567 WPD

The information and images contained herein are from sources deemed reliable. However, Metro Commercial Real Estate, Inc. makes no representation whatsoever as to their accuracy or authenticity. Images shown may be modified for illustrative purposes. Images may be out-of-date and not current. 6.20.17

**1200 VETERANS HIGHWAY
BRISTOL, PA**





The information and images contained herein are from sources deemed reliable. However, Metro Commercial Real Estate, Inc. makes no representation whatsoever as to their accuracy or authenticity. Images shown may be modified for illustrative purposes. Images may be out-of-date and not current. 6.20.17

1200 VETERANS HIGHWAY BRISTOL, PA