

# WESTLAKE PLAZA AND CENTER

960 WESTLAKE BLVD., WESTLAKE VILLAGE, CA



SUBLEASE AVAILABLE

BRETT SAUNDERS

805.497.4557 X251  
[BRETT@WESTCORD.COM](mailto:BRETT@WESTCORD.COM)  
BRE# 01991011

**WESTCORD**

951 S. WESTLAKE BLVD., SUITE 101  
WESTLAKE VILLAGE, CA. 91361

*This information has been furnished from sources which we deem reliable, but for which we assume no liability. The information contained herein is given, in confidence, with the understanding that all negotiations pertaining to this property be handled through the submitting office. All measurements are approximate.*



VONS

HomeGoods  
 Toppers PIZZA PLACE  
 Bank of America  
 CVS  
 JO-ANN

Meadows Arts & Technology Elementary School

sears  
 NORDSTROM  
 Toys R Us  
 REGAL CINEMAS  
 Burlington

WHOLE FOODS

Total Wine & More  
 BEST BUY  
 Office DEPOT  
 ROSS DRESS FOR LESS  
 Minnie's Cafe

PAVILIONS

Starbucks  
 Goodwill  
 CVS

NORDSTROM  
 ARHAUS  
 macy's  
 JCPenney  
 DICK'S SPORTING GOODS

CHASE  
 BIG B  
 Goodwill

Thousand Oaks

Conejo Ridge Open Space

BevMo!  
 BED BATH & BEYOND  
 URBAN HOME  
 FedEx Office

WORLD MARKET  
 Bristol Farms  
 See's CANDIES  
 BARNES & NOBLE BOOKSELLERS

PET SMART  
 Smart & Final  
 Michaels  
 STAPLES  
 COSTCO

Westlake Plaza and Center  
 VONS  
 GELSON'S  
 CVS

Hyatt Regency Hotel

TARGET  
 Guitar Center

Westlake Golf Course

JOI  
 TACO BELL

E POTRERO RD

TRIUNFO CANYO

LINDERO CANYON RD

AGOURA RD

S BLVD

LINDERO

N WESTLAKE BLVD

ERBES RD

N MOORPARK RD

KANAN RD

LYNN RD

23

101

23

# SUITE OVERVIEW

## AVAILABILITY

SUITE	SIZE	LEASE RATE	COMMENTS
203 - A	1,830 RSF	\$2.95 M.G.	LEASE EXPIRES 2/28/21
203 - B	1,040 RSF	\$2.95 M.G.	LEASE EXPIRES 2/28/21
203 - A&B	2,870 RSF	2.95 M.G.	LEASE EXPIRES 2/28/21

## SUITE FEATURES

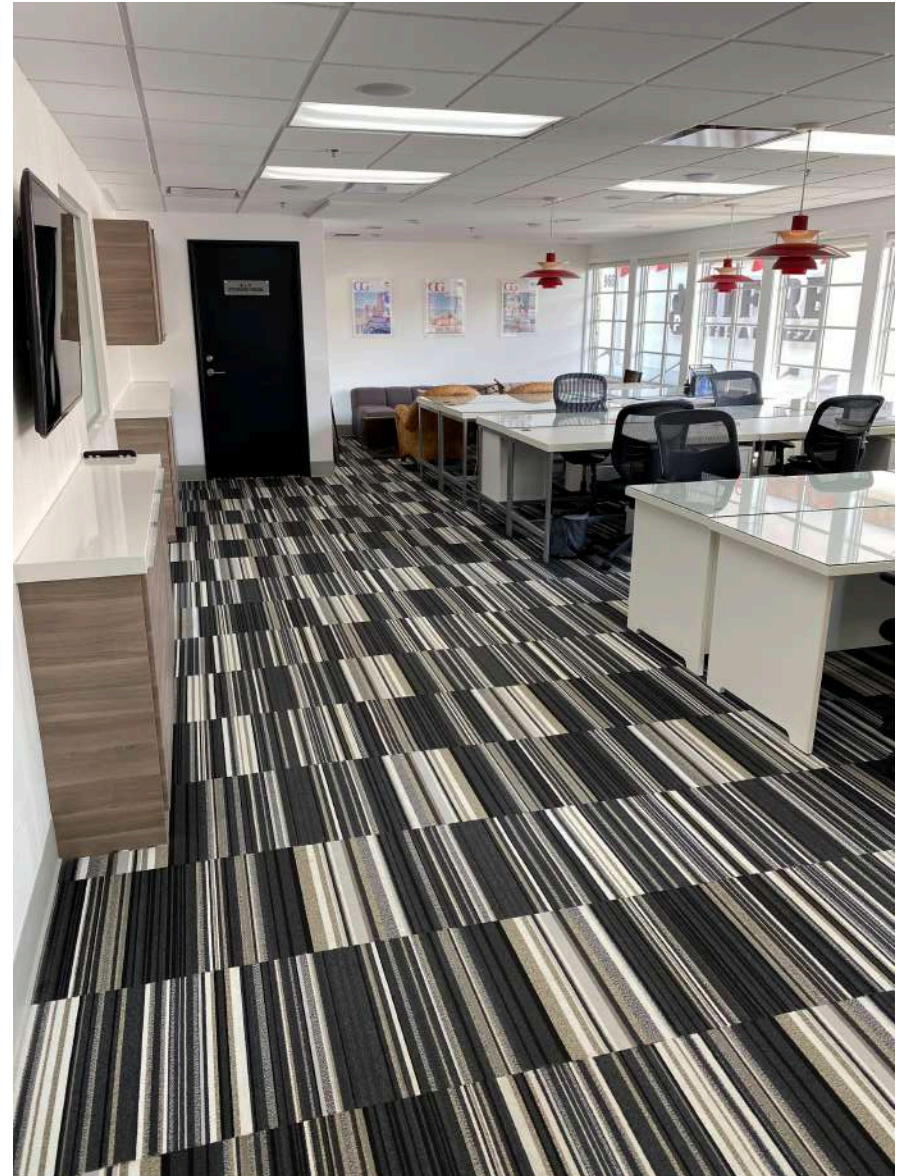
- IMMEDIATE OCCUPANCY
- PLUG AND PLAY
- FURNITURE INCLUDED
- FULL SIZE KITCHEN WITH DISHWASHER, MICROWAVE AND FRIDGE
- ABUNDANT WINDOWS
- GLASS CONFERENCE ROOM

## PROPERTY FEATURES

- PRIME WESTLAKE VILLAGE LOCATION
- MANY AMENITIES WITHIN THE CENTER
- ELEVATOR SERVED BUILDING
- EASY ACCESS TO VENTURA (101) FREEWAY

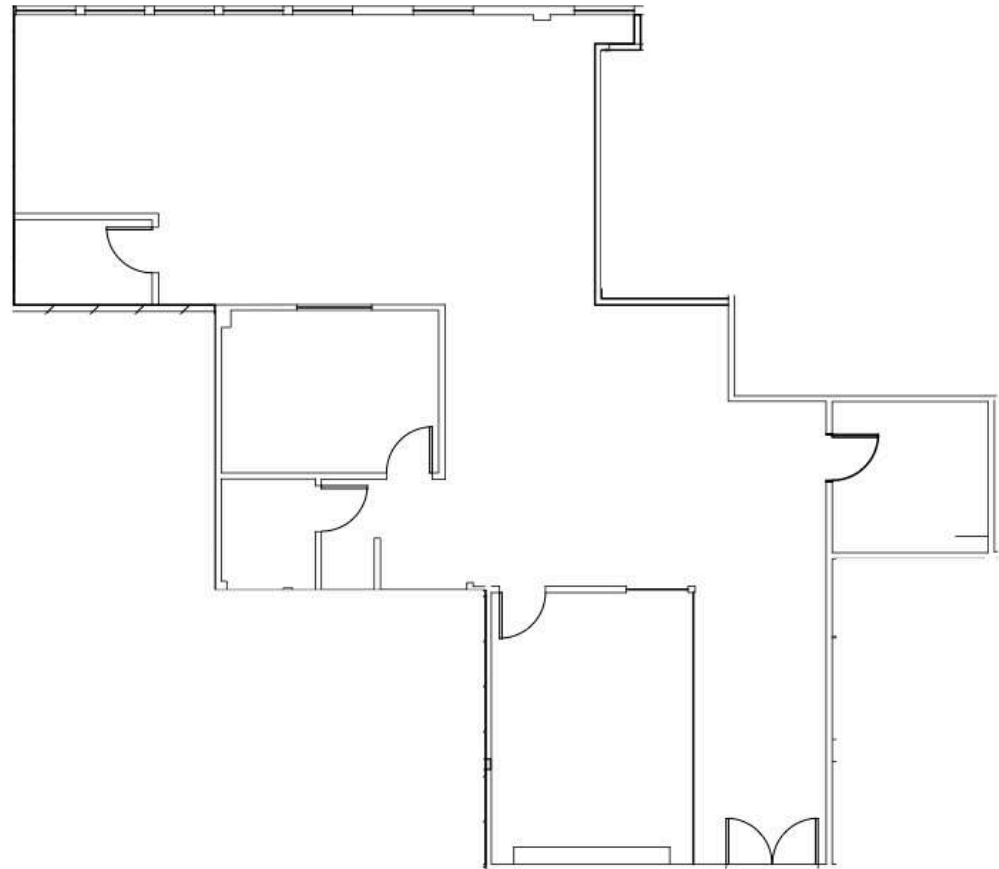
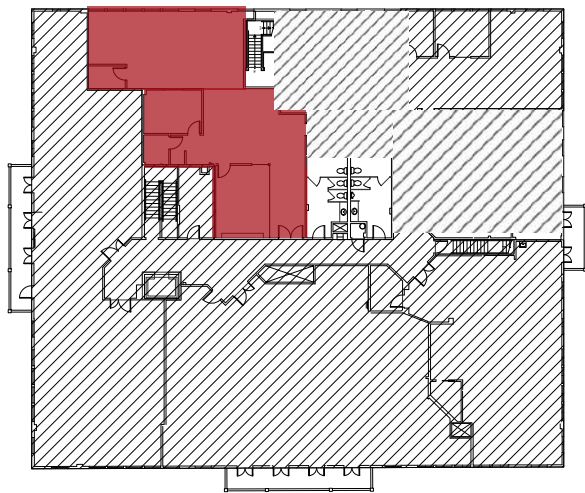


# SUITE OVERVIEW



# FLOOR PLAN

SUITE 203 - A  
+/- 1,830 RSF



**WESTCORD**

951 S. WESTLAKE BLVD., SUITE 101  
WESTLAKE VILLAGE, CA. 91361

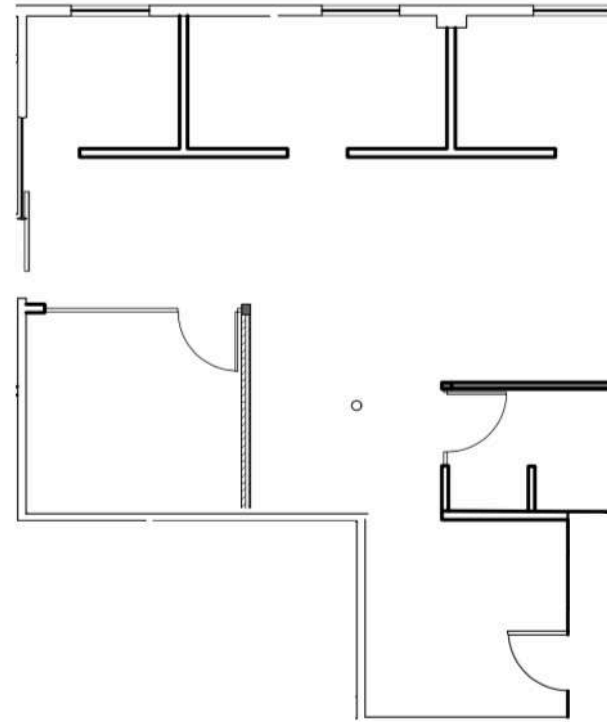
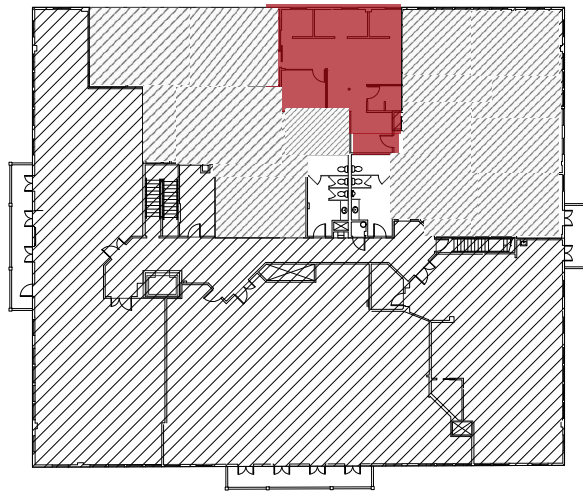
BRETT SAUNDERS

This information has been furnished from sources which we deem reliable, but for which we assume no liability. The information contained herein is given, in confidence, with the understanding that all negotiations pertaining to this property be handled through the submitting office. All measurements are approximate.

805.497.4557 X251  
[BRETT@WESTCORD.COM](mailto:BRETT@WESTCORD.COM)  
BRE# 01991011

# FLOOR PLAN

SUITE 203 - B  
+/- 1,040 RSF



**WESTCORD**

951 S. WESTLAKE BLVD., SUITE 101  
WESTLAKE VILLAGE, CA. 91361

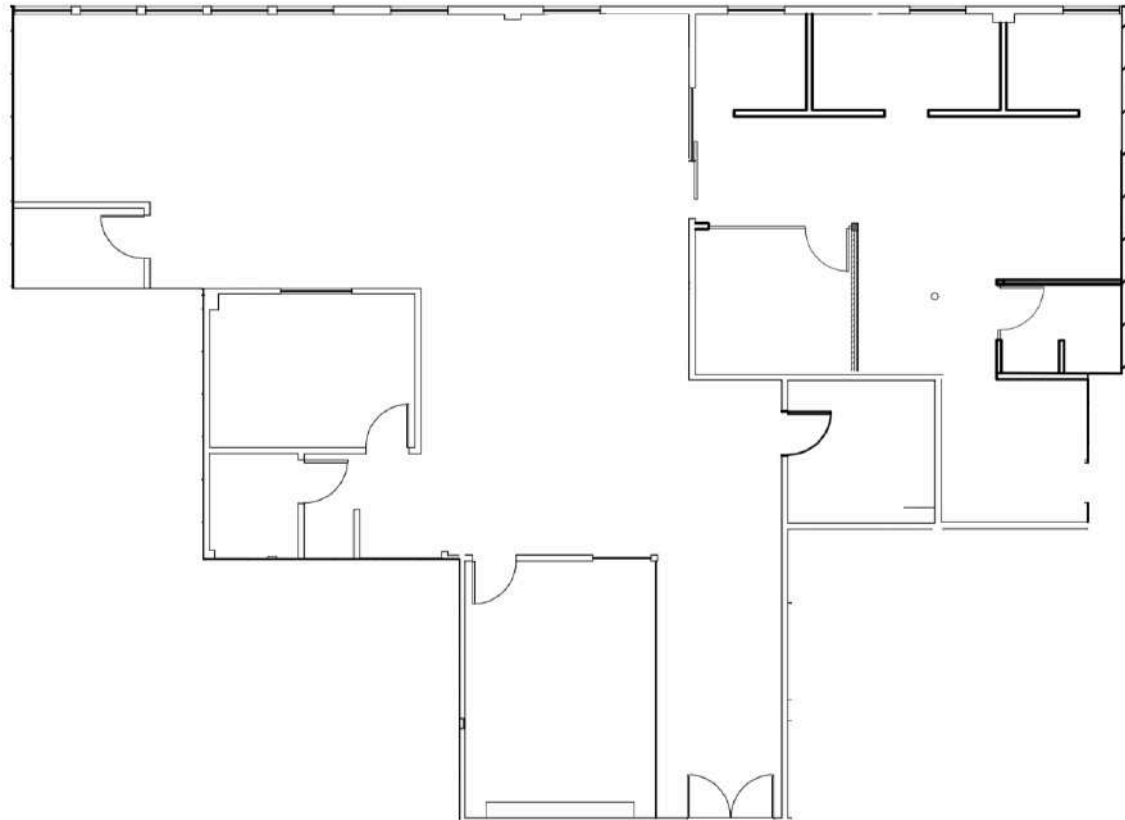
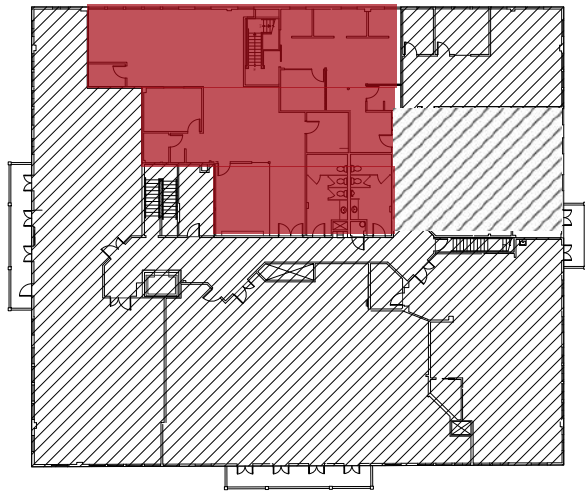
BRETT SAUNDERS

This information has been furnished from sources which we deem reliable, but for which we assume no liability. The information contained herein is given, in confidence, with the understanding that all negotiations pertaining to this property be handled through the submitting office. All measurements are approximate.

805.497.4557 X251  
[BRETT@WESTCORD.COM](mailto:BRETT@WESTCORD.COM)  
BRE# 01991011

# FLOOR PLAN

SUITE 203 - A&B  
+/- 2,870 RSF



**WESTCORD**

951 S. WESTLAKE BLVD., SUITE 101  
WESTLAKE VILLAGE, CA. 91361

BRETT SAUNDERS

This information has been furnished from sources which we deem reliable, but for which we assume no liability. The information contained herein is given, in confidence, with the understanding that all negotiations pertaining to this property be handled through the submitting office. All measurements are approximate.

805.497.4557 X251  
[BRETT@WESTCORD.COM](mailto:BRETT@WESTCORD.COM)  
BRE# 01991011