

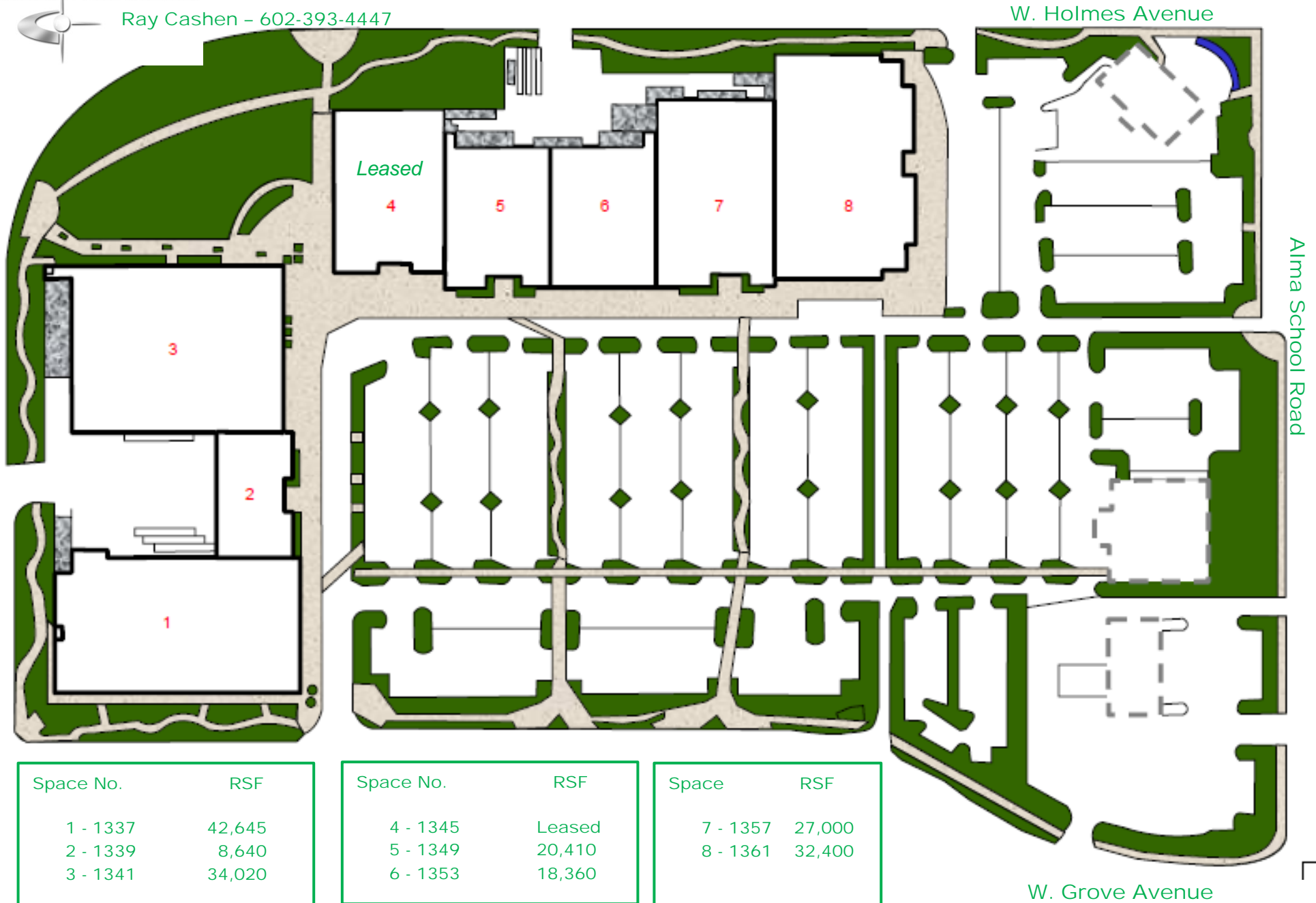


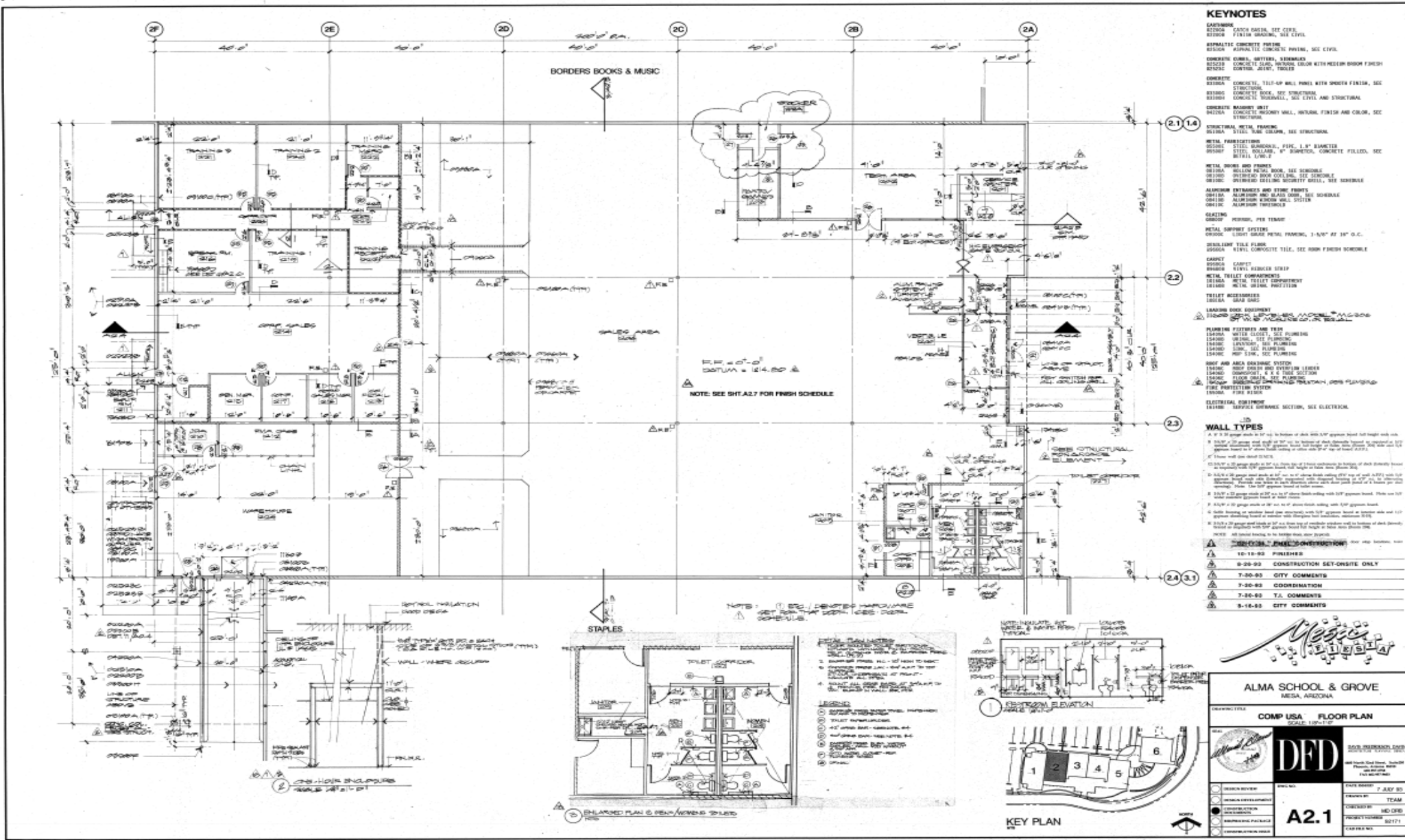
27,000 S.F.

# Mesa Fiesta Center

CASHEN REALTY ADVISORS

Ray Cashen - 602-393-4447





- KEYNOTES**
- 840000 CATCH BASIN, SEE CIVIL
  - 840010 FORTH FINISH, SEE CIVIL
  - 840020 ASPHALT CONCRETE FINISH, SEE CIVIL
  - 840030 CONCRETE CURB, BUTTER, LEANCAST
  - 840040 CONCRETE SLAB, INSUL. BELOW WITH MEDIUM DENSITY FRESH STONE CONCRETE, 3/4", FINISH
  - 840050 CONCRETE
  - 840060 CONCRETE, 1 1/2" HP WALL PANEL WITH UNDER FINISH, SEE STRUCTURAL
  - 840070 CONCRETE BLOCK, SEE STRUCTURAL
  - 840080 CONCRETE TOWER/WALL, SEE CIVIL AND STRUCTURAL
  - 840090 CONCRETE RAISED UNIT
  - 840100 CONCRETE MASONRY WALL, INSUL. FINISH AND COLOR, SEE STRUCTURAL
  - 840110 STRUCTURAL METAL FRAMING
  - 840120 STEEL TUB. COLUMN, SEE STRUCTURAL
  - 840130 METAL FABRICATIONS
  - 840140 STEEL, HOLLOW, 1 1/2" x 1 1/2" SQUARE
  - 840150 STEEL, HOLLOW, 8" SQUARE, CONCRETE FILLED, SEE STRUCTURAL
  - 840160 METAL DOORS AND FRAMES
  - 840170 HOLLOW METAL ROOF, SEE STRUCTURAL
  - 840180 INSULATED ROOF CEILING, SEE STRUCTURAL
  - 840190 SPRINKLER CEILING SECURITY GRILL, SEE GENERAL
  - 840200 ALUMINUM EXTRUSIONS AND TRIM FINISH
  - 840210 ALUMINUM AND BRASS CASE, SEE GENERAL
  - 840220 ALUMINUM FINISH WALL SYSTEM
  - 840230 ALUMINUM TRIM/SLIP
  - 840240 GLAZING
  - 840250 WINDOW, PER TRADE
  - 840260 WINDOW
  - 840270 METAL SUPPORT SYSTEMS
  - 840280 LIGHT FIXTURE METAL FRAMING, 1/2" x 1/2" AT 16" O.C.
  - 840290 CEILING TILE PANEL
  - 840300 1/2" x 1/2" COMPOSITE TILE, SEE ROOM FINISH SCHEDULE
  - 840310 CARPET
  - 840320 CARPET
  - 840330 METAL TOILET COMPARTMENTS
  - 840340 METAL TOILET EQUIPMENT
  - 840350 METAL TOILET
  - 840360 TOILET ACCESSORIES
  - 840370 TOILET
  - 840380 LAUNDRY EQUIPMENT
  - 840390 WASHING MACHINE
  - 840400 DRYER
  - 840410 PLUMBING FIXTURES AND TRIM
  - 840420 WATER CLOSET, SEE PLUMBING
  - 840430 URINAL, SEE PLUMBING
  - 840440 SINK, SEE PLUMBING
  - 840450 SINK, SEE PLUMBING
  - 840460 SINK, SEE PLUMBING
  - 840470 SINK, SEE PLUMBING
  - 840480 SINK, SEE PLUMBING
  - 840490 SINK, SEE PLUMBING
  - 840500 SINK, SEE PLUMBING
  - 840510 SINK, SEE PLUMBING
  - 840520 SINK, SEE PLUMBING
  - 840530 SINK, SEE PLUMBING
  - 840540 SINK, SEE PLUMBING
  - 840550 SINK, SEE PLUMBING
  - 840560 SINK, SEE PLUMBING
  - 840570 SINK, SEE PLUMBING
  - 840580 SINK, SEE PLUMBING
  - 840590 SINK, SEE PLUMBING
  - 840600 SINK, SEE PLUMBING
  - 840610 SINK, SEE PLUMBING
  - 840620 SINK, SEE PLUMBING
  - 840630 SINK, SEE PLUMBING
  - 840640 SINK, SEE PLUMBING
  - 840650 SINK, SEE PLUMBING
  - 840660 SINK, SEE PLUMBING
  - 840670 SINK, SEE PLUMBING
  - 840680 SINK, SEE PLUMBING
  - 840690 SINK, SEE PLUMBING
  - 840700 SINK, SEE PLUMBING
  - 840710 SINK, SEE PLUMBING
  - 840720 SINK, SEE PLUMBING
  - 840730 SINK, SEE PLUMBING
  - 840740 SINK, SEE PLUMBING
  - 840750 SINK, SEE PLUMBING
  - 840760 SINK, SEE PLUMBING
  - 840770 SINK, SEE PLUMBING
  - 840780 SINK, SEE PLUMBING
  - 840790 SINK, SEE PLUMBING
  - 840800 SINK, SEE PLUMBING
  - 840810 SINK, SEE PLUMBING
  - 840820 SINK, SEE PLUMBING
  - 840830 SINK, SEE PLUMBING
  - 840840 SINK, SEE PLUMBING
  - 840850 SINK, SEE PLUMBING
  - 840860 SINK, SEE PLUMBING
  - 840870 SINK, SEE PLUMBING
  - 840880 SINK, SEE PLUMBING
  - 840890 SINK, SEE PLUMBING
  - 840900 SINK, SEE PLUMBING
  - 840910 SINK, SEE PLUMBING
  - 840920 SINK, SEE PLUMBING
  - 840930 SINK, SEE PLUMBING
  - 840940 SINK, SEE PLUMBING
  - 840950 SINK, SEE PLUMBING
  - 840960 SINK, SEE PLUMBING
  - 840970 SINK, SEE PLUMBING
  - 840980 SINK, SEE PLUMBING
  - 840990 SINK, SEE PLUMBING
  - 841000 SINK, SEE PLUMBING

27,000 S.F.



**RECENT INVESTMENTS**

- 1 Southern Avenue Villas**  
\$41M investment – opened Summer 2016  
Urban style, multi-family development, 354 units
- 2 Mesa Fiesta Center**  
Vacant retail redevelopment converted to 200k SF  
Class A office campus  
Feed My Starving Children – 25k SF  
\$300k investment – opened Apr. 2015
- 3 Fiesta Corporate Campus**  
\$21M redevelopment project  
Former Macy's Department Store  
converted to 158k SF of Class A office  
Completion 2017
- 4 Mesa Community College (MCC)**  
\$2M Art Gallery – completed 2013  
\$17.5M, 48k SF Student Entry Portal
- 5 MCC Performing Arts Center**  
\$15M project – completed Nov. 2014  
462 seats
- 6 Banner Desert Medical Center**  
\$10.2M renovation in 2012  
549 beds
- 7 Cardon Children's Medical Center**  
\$320M in new Children's Tower & campus remodel  
Ronald McDonald House  
12.6k SF of former healthcare facility  
\$2.1M project – completed Nov. 2014
- 8 Mesa Police Substation**  
\$15M project – completed 2013  
125 staff
- 9 Bacus Food Corp. Headquarters**  
\$485k project – completed 2013
- 10 Esurance Corporate Office**  
\$600k project – completed 2013  
200 new jobs

- Redundant Fiber: Cox, CenturyLink, Zayo
- Transportation Corridors: US 60, Loop 101
- Labor force within 30-min. commute:  
1.7M, 41% with associate's degree or higher

**COMPANY**

- Banner Desert Medical Center /  
Cardon Children's Medical Center
- Santander Consumer USA
- Mesa Community College
- National General Lender Services
- Synergy Homecare
- Esurance
- Hilton Hotel
- Banner iCare
- Sonora Quest Laboratories

**EMPLOYEES**

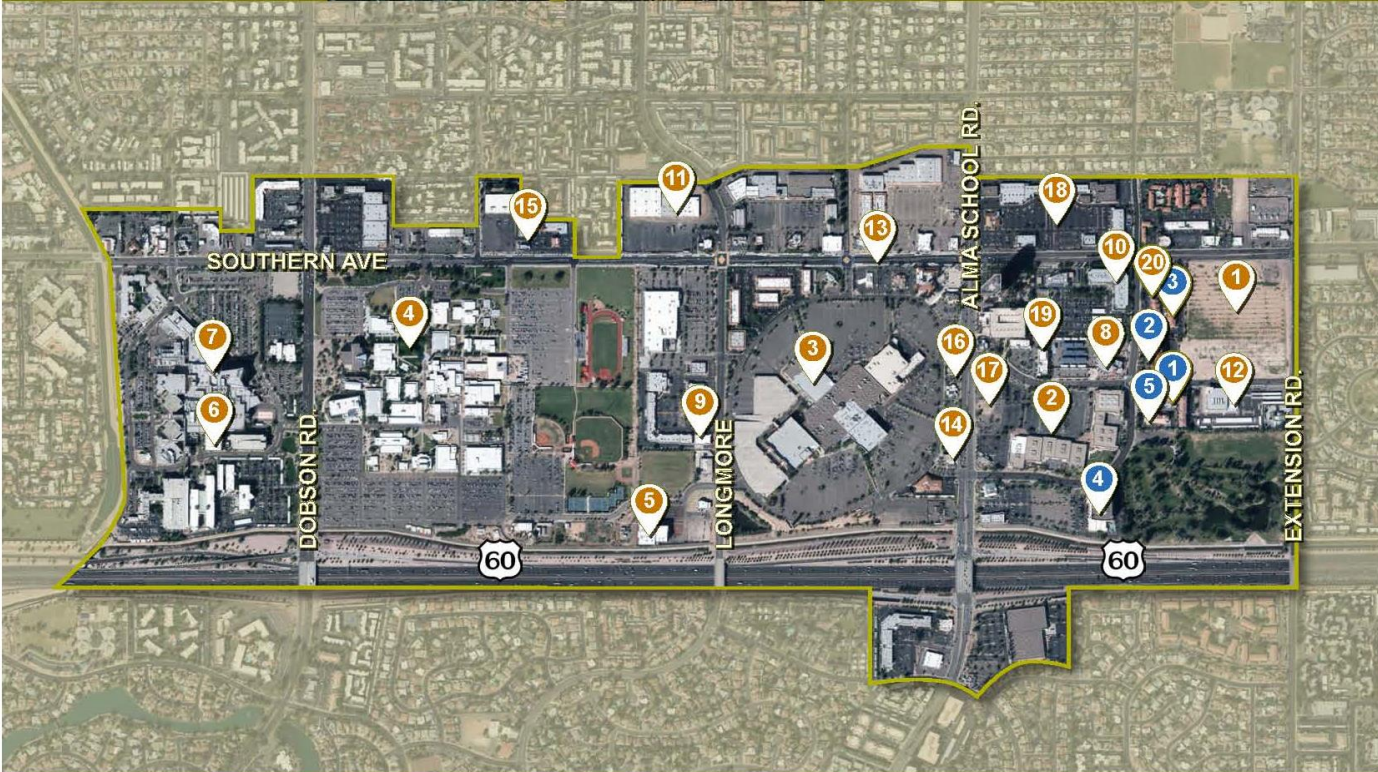
- 3,000
- 970
- 686
- 470
- 250
- 200
- 123
- 100
- 94

**HOTELS**

- 1 RESIDENCE INN**
- 2 LA QUINTA**
- 3 MARRIOTT COURTYARD**
- 4 HILTON**
- 5 FAIRFIELD INN**

**RECENT INVESTMENTS**

- 11 Santander Consumer USA / Project Centrica**  
\$12M redevelopment project  
Former retail converted to 110k SF Class A office  
Santander located in Nov. 2015  
970 new jobs
- 12 National General Lender Services**  
\$4.3M in renovations/tenant improvements  
70k SF Class A office space  
National General Lender Services located in Nov. 2015  
470 new jobs
- 13 Southern Ave. Street Improvements**  
\$25.8M project – Tempe Canal to Alma School  
Phase I – completed Nov. 2014  
Paseo Nodes – completed Jan. 2015  
Phase II – completion Oct. 2016
- 14 Longhorn Steak House**  
\$813k project – completed 2012
- 15 Jimmy Johns**  
\$225k project – completed 2012
- 16 Dutch Bros**  
\$218k project – completed 2013
- 17 Chevy's Redevelopment**  
\$3.2M project – completed 2015  
8.5k SF retail redevelopment  
Tenants: Mattress Firm, Smashburger, Chipotle
- 18 Fiesta Commons Renovation**  
\$4M redevelopment project – completed 2014  
Boulders on Southern Bar and Grill  
\$84k project – completed 2014
- 19 The Draft Sports Grill**  
Completed 2015
- 20 Marriott Courtyard**  
\$2.5M renovation project – completed 2012



**18 MIN** Distance from  
Phoenix Sky Harbor  
International Airport

**40 RESTAURANTS | 50 RETAIL STORES | 5 HOTELS 700+ ROOMS | 2 HOSPITALS 755 BEDS**

**23K** MESA  
STUDENTS COMMUNITY  
COLLEGE