

kinzie | design | center

CREATIVE BRICK & TIMBER LOFT SPACE



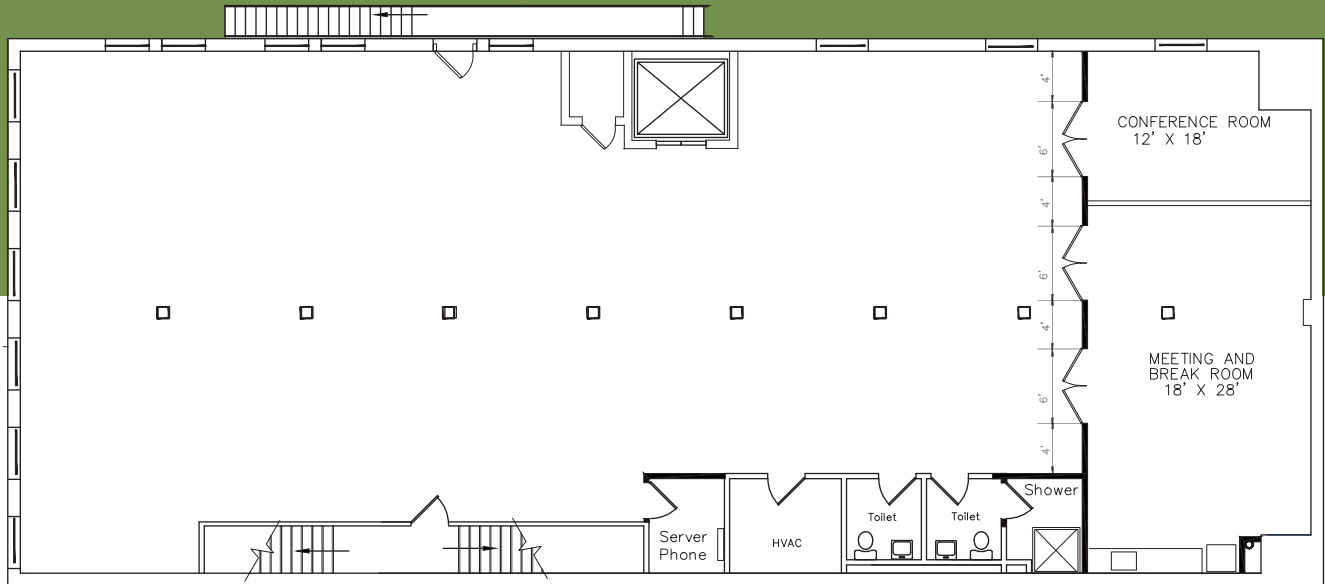
Prime Location in River North within
Walking Distance to Retail, Restaurants & Entertainment

FOR MORE INFORMATION, PLEASE CONTACT:

BA BRADFORD
ALLEN

Steve Fitzgerald
Managing Director, Realty Services
312.994.5650
sfitzgerald@bradfordallen.com

SUITE 200 | 4,348 RSF



FEATURES

- Rare full-floor vacancy in boutique timber loft elevator building •
 - Large conference room/private office 12x18 •
 - Large break room/conference room 18x28 •
 - Open plan with private restroom with shower •
 - Space is accessible via elevator and via walk-up •
 - Street level door signage available on Kinzie •
- Gilt Bar, Bavette's, Doughnut Vault and Ciccio Mio in the building •
 - One block to Merchandise Mart •

FOR MORE INFORMATION, PLEASE CONTACT: