



Bolingbrook Medical Center

396 Remington Blvd

MEDICAL OFFICE SUITES
1,589 RSF - 5,296 RSF Available



BUILDING SPECS

YEAR BUILT 2008

FULL RENOVATION 2019

STORIES 3

BUILDING RBA 73,544 RSF

AVERAGE FLOOR SIZE 24,500 RSF

PARKING RATIO 5/1,000



BUILDING HIGHLIGHTS

- Hospital connection through interior annex
- High-end finishes throughout
- Efficient layouts to maximize practice efficiency
- On-site physician's lounge
- Directly on campus at AMITA Bolingbrook Hospital
- Convenient access to I-55, I-355 and Rt. 53
- Restaurants, hotels, shops and services nearby

Exclusive Leasing Agent

BA BRADFORD
ALLEN

For leasing information or to arrange a tour, please contact:

JOEL BERGER
630 225 2600 jberger@bradfordallen.com



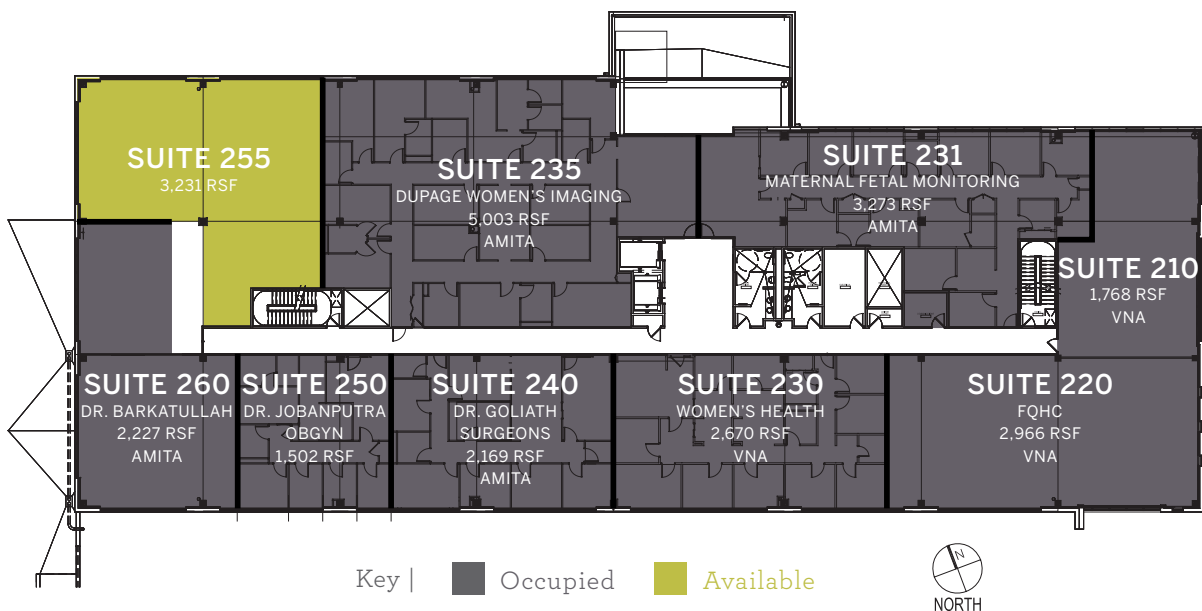
Bolingbrook Medical Center

396 Remington Blvd

First Floor | 2,368 RSF Available



Second Floor | 3,231 RSF Available



Exclusive Leasing Agent

BA BRADFORD ALLEN

For leasing information or to arrange a tour, please contact:

JOEL BERGER
630 225 2600 jberger@bradfordallen.com



Bolingbrook Medical Center

396 Remington Blvd

Third Floor | 1,589 RSF – 5,296 RSF Available



Key | ■ Occupied ■ Available



Exclusive Leasing Agent

BA BRADFORD
ALLEN

For leasing information or to arrange a tour, please contact:

JOEL BERGER
630 225 2600 jberger@bradfordallen.com