



BORDENTOWN PROFESSIONAL PLAZA

163 Route 130 | Bordentown | NJ | 08505 | Burlington County

Move In Ready Medical & Spacious Professional Office Suites



BUILDING 1



BUILDING 2

- ✦ Locate your business in this well maintained professional campus
- ✦ Motivated Landlord
- ✦ Medical suite - Move in ready
- ✦ Excellent signage on Route 130 and plenty of parking
- ✦ Elevator serviced / ADA compliant
- ✦ Many nearby amenities
- ✦ Located on Route 130 North, near Route 206, I-95, NJ Turnpike, the River Line



DEMOGRAPHICS (*)

	1 Mile	3 Miles	5 Miles
Population	11,183	88,994	227,870
Average HH Income	\$78,966	\$74,278	\$84,032
Total Businesses	496	4,196	9,568
Number of Employees	15,974	76,348	140,383

*Data Source: AGS TM

Contact:

Dru Gropp Damico
609-462-1196

drud@arrowrealestateservices.com

Corporate Headquarters
555 Building, Bala Cynwyd, PA
Administrative Office
717 Limekiln Road, Doylestown, PA 18901

ArrowRealEstateServices.com



AVAILABLE FOR LEASE

Bordentown Professional Plaza

163 ROUTE 130, BORDENTOWN, NJ 08505

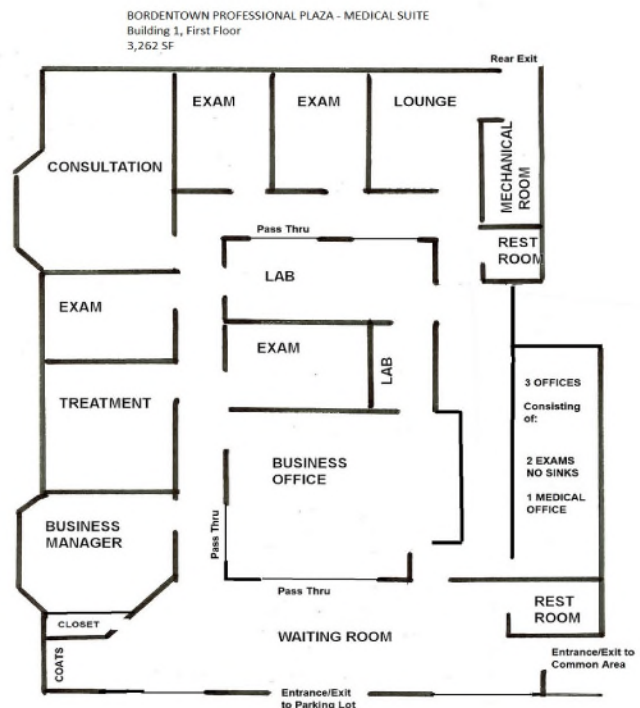


MEDICAL OFFICE SUITE



Building 1 - 3,262 SF

- Private entrance from parking lot
- Patient Waiting Area
- Admin Area - Lab - Nurse Stations
- 2 Large Doctor's Offices
- 5 Exam Rooms w/Sinks
- 3 Office/Exam Rooms
- Copy Room/Storage Area
- Employee Lounge w/Sink
- 2 Restrooms
- Rear Exit



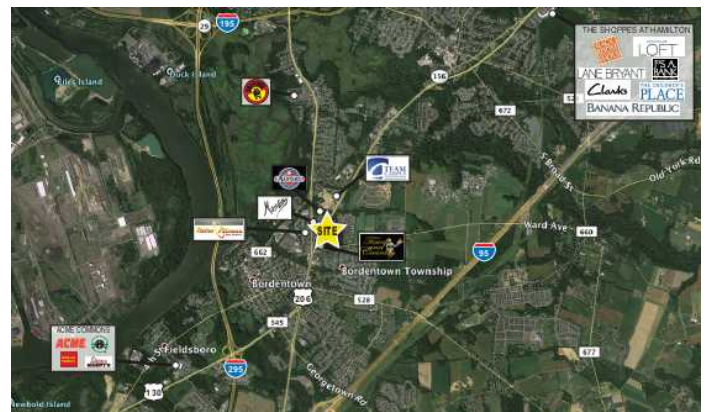
PROFESSIONAL OFFICE SUITES

2,355 SF - 1ST Floor

Conference Room, 4 Private Offices
Open Area, 2 Restrooms, Rear Exit

6,055 SF - 2ND Floor

Divisible as 2,775 SF & 3,280 SF
Large Conference Room, Spacious Windowed
Offices, Copy/Server/Storage Rooms, Private
Restrooms, Rear Exits



ARROW

Real Estate Services

Admin: 717 Limekiln Road, Doylestown, PA 18901
HQ: 555 E. City Line Ave, Bala Cynwyd, PA 19004
610.400.3018 | ArrowRealEstateServices.com



TCN
WORLDWIDE
REAL ESTATE SERVICES

DRU DAMICO

609.462.1196

DruD@ArrowRealEstateServices.com