



LAND

FOR SALE

±11.57-AC INDUSTRIAL LAND OPPORTUNITY

1 Biondi Ave, Old Bridge, NJ 07721

For More Information, Contact the Exclusive Brokers

JASON M. CRIMMINS, CCIM, SIOR | *President* | jmcrimmins@blauberg.com | 973.379.6644 x122

ALESSANDRO (ALEX) CONTE, CCIM, SIOR | *Executive Vice President* | aconte@blauberg.com | 973.379.6644 x131

PETER J. MURANO, JR., SIOR | *Senior Executive Director* | pjmurano@blauberg.com | 973.379.6644 x114

MICHAEL F. SCHIPPER, SIOR | *Senior Executive Director* | mschipper@blauberg.com | 973.379.6644 x146



830 Morris Turnpike, Suite 201, Short Hills, NJ 07078

www.blauberg.com

±11.57-AC INDUSTRIAL LAND OPPORTUNITY

1 Biondi Ave, Old Bridge, NJ 07721



PROPERTY DESCRIPTION

±11.57 AC Industrial Land Opportunity (±5.5 AC Currently Usable)

LOCATION DESCRIPTION

5 Miles from Route 1 & 9
9 Miles from NJ Turnpike at Interchange 11
26 Miles from Ports of NY & NJ

OFFERING SUMMARY

Sale Price:	\$2,200,000
Available SF:	11.57 Acres
Lot Size:	11.57 Acres

PROPERTY HIGHLIGHTS

- ±11.57 AC Site
- ±5.5 AC Cleared/Graded
- ±4,000 SF Two-Bay Garage & Office
- ±3,000 SF Steel Storage Shed (15'x 12' Overhead Door)
- Zoning: SD5 (Industrial)
- Utilities on Site
- Site is Out of the Flood Zone (Above the 100-Year Zone)
- Currently Utilized as Surface Parking for Tractors and Trailers
- Access to Ports of NY & NJ Via 1 & 9 & NJ Turnpike

For More Information, Contact the Exclusive Brokers

JASON M. CRIMMINS, CCIM, SIOR | *President* | jmcrimmins@blauberg.com | 973.379.6644 x122
ALESSANDRO (ALEX) CONTE, CCIM, SIOR | *Executive Vice President* | aconte@blauberg.com | 973.379.6644 x131
PETER J. MURANO, JR., SIOR | *Senior Executive Director* | pjmurano@blauberg.com | 973.379.6644 x114
MICHAEL F. SCHIPPER, SIOR | *Senior Executive Director* | mschipper@blauberg.com | 973.379.6644 x146

830 Morris Turnpike
Suite 201
Short Hills, NJ 07078

www.blauberg.com



The information contained herein has been obtained from sources considered to be reliable, but no guarantee of its accuracy is made by this company. In addition, no representation is made respecting zoning, condition of title, dimensions, or any matters of a legal or environmental nature. Such matters should be referred to legal counsel for determination. Terms and conditions are subject to change without prior notice. Subject to errors and omissions.

±11.57-AC INDUSTRIAL LAND OPPORTUNITY

1 Biondi Ave, Old Bridge, NJ 07721



For More Information, Contact the Exclusive Brokers

JASON M. CRIMMINS, CCIM, SIOR | *President* | jmcrimmins@blauberg.com | 973.379.6644 x122

ALESSANDRO (ALEX) CONTE, CCIM, SIOR | *Executive Vice President* | aconte@blauberg.com | 973.379.6644 x131

PETER J. MURANO, JR., SIOR | *Senior Executive Director* | pjmurano@blauberg.com | 973.379.6644 x114

MICHAEL F. SCHIPPER, SIOR | *Senior Executive Director* | mschipper@blauberg.com | 973.379.6644 x146

830 Morris Turnpike
Suite 201
Short Hills, NJ 07078

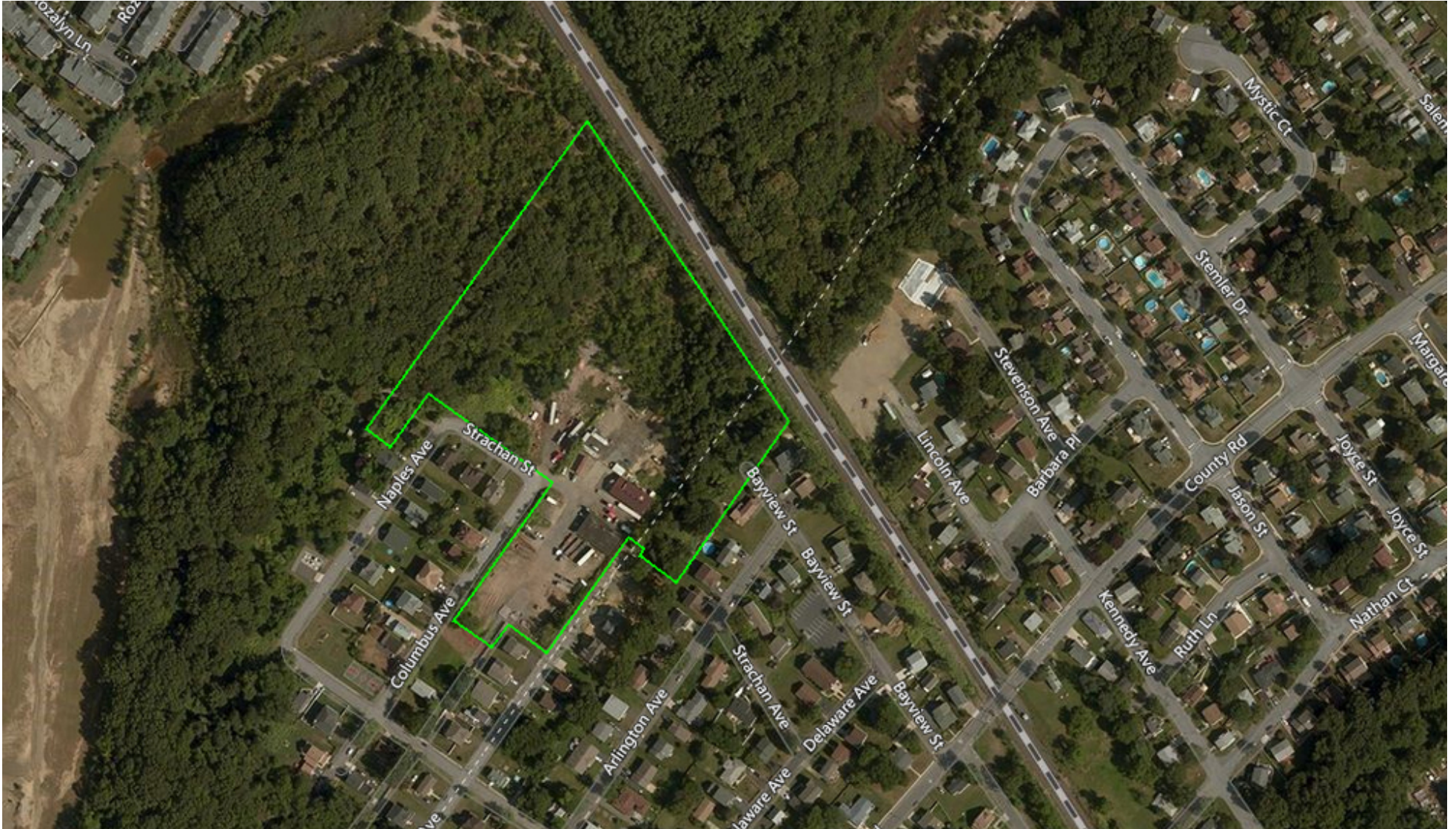
www.blauberg.com



The information contained herein has been obtained from sources considered to be reliable, but no guarantee of its accuracy is made by this company. In addition, no representation is made respecting zoning, condition of title, dimensions, or any matters of a legal or environmental nature. Such matters should be referred to legal counsel for determination. Terms and conditions are subject to change without prior notice. Subject to errors and omissions.

±11.57-AC INDUSTRIAL LAND OPPORTUNITY

1 Biondi Ave, Old Bridge, NJ 07721



For More Information, Contact the Exclusive Brokers

JASON M. CRIMMINS, CCIM, SIOR | *President* | jmcrimmins@blauberg.com | 973.379.6644 x122

ALESSANDRO (ALEX) CONTE, CCIM, SIOR | *Executive Vice President* | aconte@blauberg.com | 973.379.6644 x131

PETER J. MURANO, JR., SIOR | *Senior Executive Director* | pjmurano@blauberg.com | 973.379.6644 x114

MICHAEL F. SCHIPPER, SIOR | *Senior Executive Director* | mschipper@blauberg.com | 973.379.6644 x146

830 Morris Turnpike
Suite 201
Short Hills, NJ 07078

www.blauberg.com



The information contained herein has been obtained from sources considered to be reliable, but no guarantee of its accuracy is made by this company. In addition, no representation is made respecting zoning, condition of title, dimensions, or any matters of a legal or environmental nature. Such matters should be referred to legal counsel for determination. Terms and conditions are subject to change without prior notice. Subject to errors and omissions.

LAND

FOR LEASE

±11.57-AC INDUSTRIAL LAND OPPORTUNITY

1 Biondi Ave, Old Bridge, NJ 07721



For More Information, Contact the Exclusive Brokers

JASON M. CRIMMINS, CCIM, SIOR | *President* | jmcrimmins@blauberg.com | 973.379.6644 x122

ALESSANDRO (ALEX) CONTE, CCIM, SIOR | *Executive Vice President* | aconte@blauberg.com | 973.379.6644 x131

PETER J. MURANO, JR., SIOR | *Senior Executive Director* | pjmurano@blauberg.com | 973.379.6644 x114

MICHAEL F. SCHIPPER, SIOR | *Senior Executive Director* | mschipper@blauberg.com | 973.379.6644 x146

830 Morris Turnpike
Suite 201
Short Hills, NJ 07078

www.blauberg.com



The information contained herein has been obtained from sources considered to be reliable, but no guarantee of its accuracy is made by this company. In addition, no representation is made respecting zoning, condition of title, dimensions, or any matters of a legal or environmental nature. Such matters should be referred to legal counsel for determination. Terms and conditions are subject to change without prior notice. Subject to errors and omissions.

±11.57-AC INDUSTRIAL LAND OPPORTUNITY

1 Biondi Ave, Old Bridge, NJ 07721



For More Information, Contact the Exclusive Brokers

JASON M. CRIMMINS, CCIM, SIOR | *President* | jmcrimmins@blauberg.com | 973.379.6644 x122
ALESSANDRO (ALEX) CONTE, CCIM, SIOR | *Executive Vice President* | aconte@blauberg.com | 973.379.6644 x131
PETER J. MURANO, JR., SIOR | *Senior Executive Director* | pjmurano@blauberg.com | 973.379.6644 x114
MICHAEL F. SCHIPPER, SIOR | *Senior Executive Director* | mschipper@blauberg.com | 973.379.6644 x146

830 Morris Turnpike
 Suite 201
 Short Hills, NJ 07078

www.blauberg.com



The information contained herein has been obtained from sources considered to be reliable, but no guarantee of its accuracy is made by this company. In addition, no representation is made respecting zoning, condition of title, dimensions, or any matters of a legal or environmental nature. Such matters should be referred to legal counsel for determination. Terms and conditions are subject to change without prior notice. Subject to errors and omissions.

±11.57-AC INDUSTRIAL LAND OPPORTUNITY

1 Biondi Ave, Old Bridge, NJ 07721



JASON M. CRIMMINS, CCIM, SIOR

President

973.568.6611

jmcrimmins@blauberg.com



PETER J. MURANO, JR., SIOR

Senior Executive Director

973.214.9375

pjmurano@blauberg.com



ALESSANDRO (ALEX) CONTE, CCIM, SIOR

Executive Vice President

973.432.1648

aconte@blauberg.com



MICHAEL F. SCHIPPER, SIOR

Senior Executive Director

973.936.4173

mschipper@blauberg.com



For More Information, Contact the Exclusive Brokers

JASON M. CRIMMINS, CCIM, SIOR | *President* | jmcrimmins@blauberg.com | 973.379.6644 x122

ALESSANDRO (ALEX) CONTE, CCIM, SIOR | *Executive Vice President* | aconte@blauberg.com | 973.379.6644 x131

PETER J. MURANO, JR., SIOR | *Senior Executive Director* | pjmurano@blauberg.com | 973.379.6644 x114

MICHAEL F. SCHIPPER, SIOR | *Senior Executive Director* | mschipper@blauberg.com | 973.379.6644 x146

830 Morris Turnpike
Suite 201
Short Hills, NJ 07078

www.blauberg.com



The information contained herein has been obtained from sources considered to be reliable, but no guarantee of its accuracy is made by this company. In addition, no representation is made respecting zoning, condition of title, dimensions, or any matters of a legal or environmental nature. Such matters should be referred to legal counsel for determination. Terms and conditions are subject to change without prior notice. Subject to errors and omissions.