



***FOR LEASE***  
**EMERIL'S HOMEBASE**  
**Office Space on St. Charles Avenue**



**Address:**

839 St. Charles Avenue  
(between Julia and St. Joseph Streets)

**Rentable Square Feet:**

Suite 203: 2,285 RSF  
Suite 304: 1,835 RSF  
Suite 307: 2,036 RSF  
Suite 310: 1,442 RSF  
Suite 311: 971 RSF

**Rentable Rate:**

Suite 203: \$16.75 per RSF, full service  
Suite 304: \$17.75 per RSF, full service  
Suite 307: \$16.75 per RSF, full service  
Suite 310: \$17.00 per RSF, full service  
Suite 311: \$17.00 per RSF, full service

**Parking:**

There are numerous parking spaces within a one-block vicinity of the building available for lease.

**Floor Plans:**

See attached.

***FOR FURTHER INFORMATION, PLEASE CALL:***

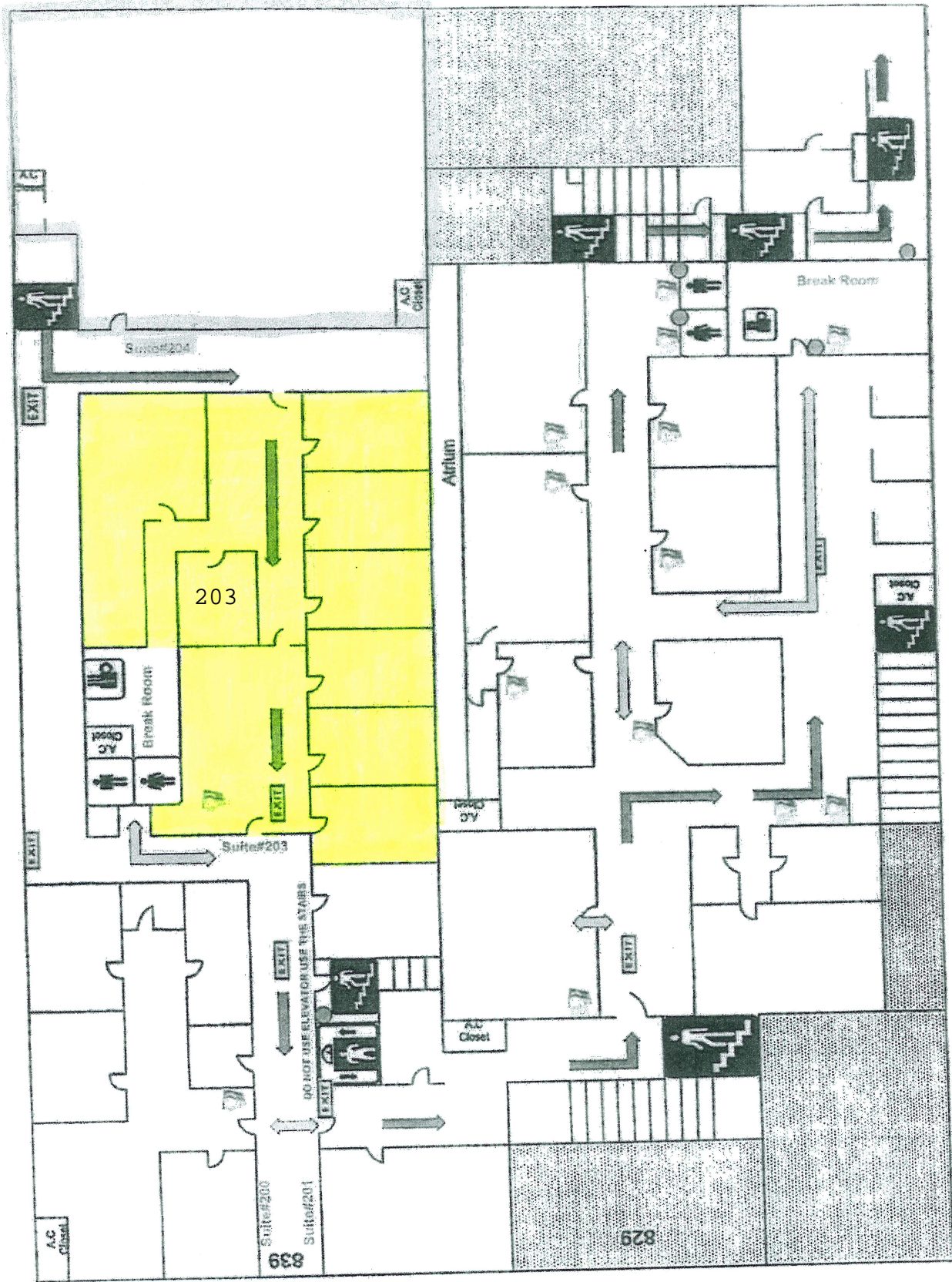
**BOBBY TALBOT, CCIM**

**(504) 525-9763 - Office**

**email: [btalbot@talbot-realty.com](mailto:btalbot@talbot-realty.com)**

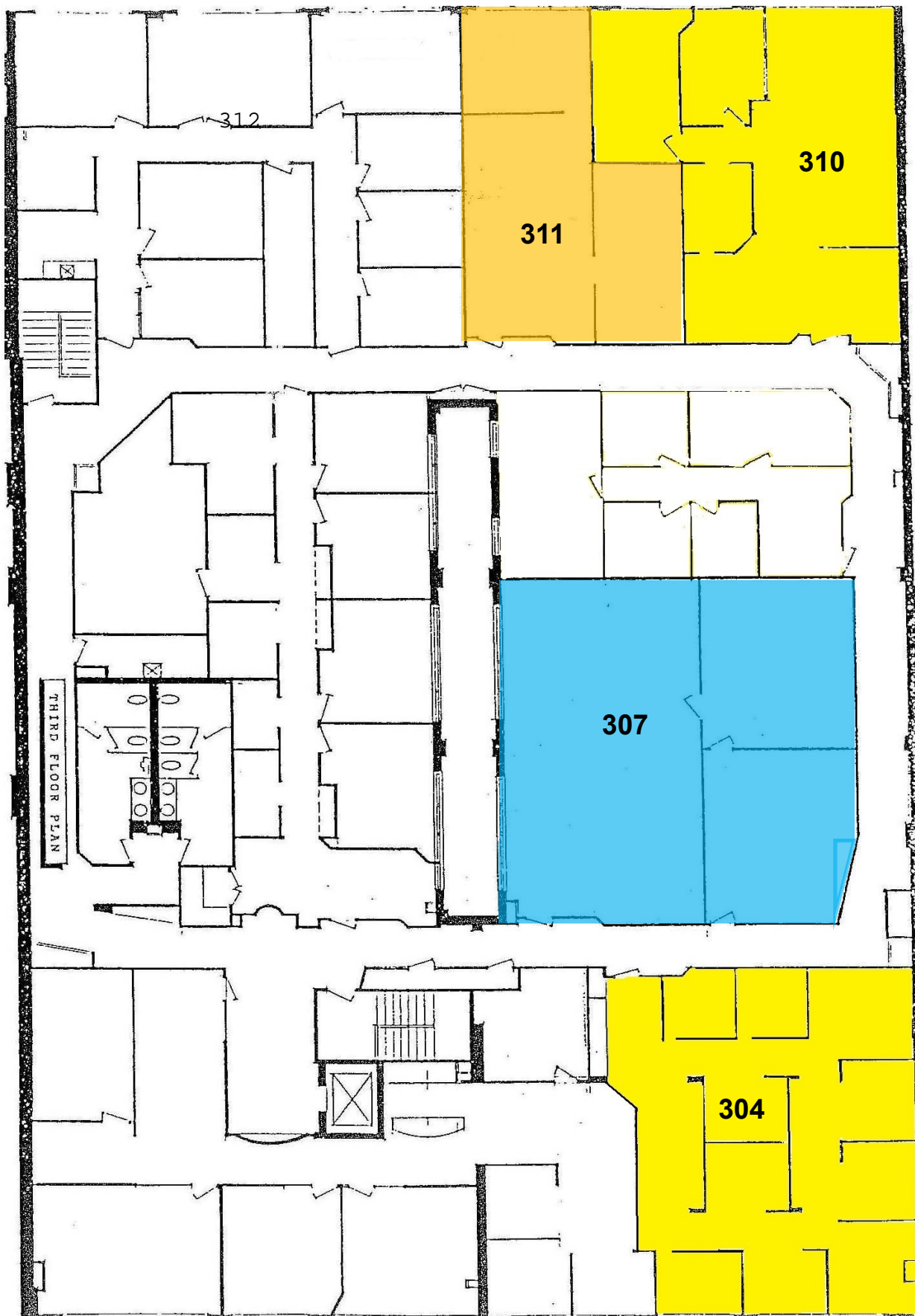
**Website: [www.talbot-realty.com](http://www.talbot-realty.com)**

The information above has been obtained from sources believed reliable. While we do not doubt its accuracy we have not verified it and make no guarantee, warranty or representation about it. It is your responsibility to independently confirm its accuracy and completeness. Any projections, opinions, assumptions, or estimates used are for example only and do not represent the current or future performance of the property. The value of this transaction to you depends on tax and other factors which should be evaluated by your tax, financial and legal advisors. You and your advisors should conduct a careful, independent investigation of the property to determine to your satisfaction the suitability of the property for your needs. JANUARY 2021



Second Floor 829/839





829 ST. CHARLES AVENUE NEW ORLEANS, LA

BUILDING INTERIOR PHOTOS



SUITE 304





829 ST. CHARLES AVENUE NEW ORLEANS, LA

SUITE 310

