

3825 SULLIVAN TRAIL

FORKS TOWNSHIP, PA

±2,714 SF END CAP AVAILABLE FOR LEASE

JOIN
weis **weis**
GAS N' GO

GOOD
SHEPHERD
REHABILITATION



property highlights.

- ±62,000 SF Weis opened in June 2011
- Situated 4-miles north of Easton, PA and 3-miles east of Nazareth, PA
- End cap available
- Owned & Managed by: **weis**

stats.

2020 DEMOGRAPHICS*	1 MILE	3 MILES	5 MILES
EST. POPULATION	3,258	27,938	107,151
EST. HOUSEHOLDS	1,229	10,317	40,137
EST. AVG. HH INCOME	\$120,617	\$119,064	\$88,324

SULLIVAN TRAIL TRAFFIC COUNT: 6,831 VPD *ESRI 2020



METRO[®]
COMMERCIAL
REAL ESTATE, INC.

MetroCommercial.com | PLYMOUTH MEETING, PA | MOUNT LAUREL, NJ

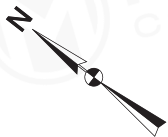
get in touch.

PAT GALLAGHER

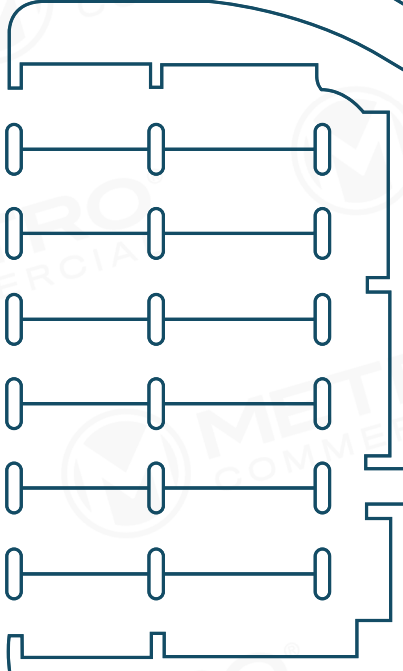
office 610.825.5222
direct 610.260.2676
pgallagher@metrocommercial.com

BRENDAN MULLIGAN

office 610.825.5222
direct 610.260.2688
bmulligan@metrocommercial.com



UHLER ROAD



IAN STREET

weis
GAS-N-GO

PYLON

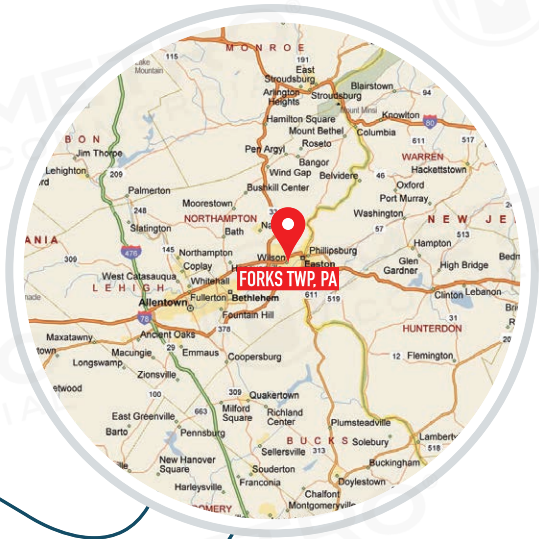
BRADEN BLVD



AVAILABLE
±2,714 SF

80'

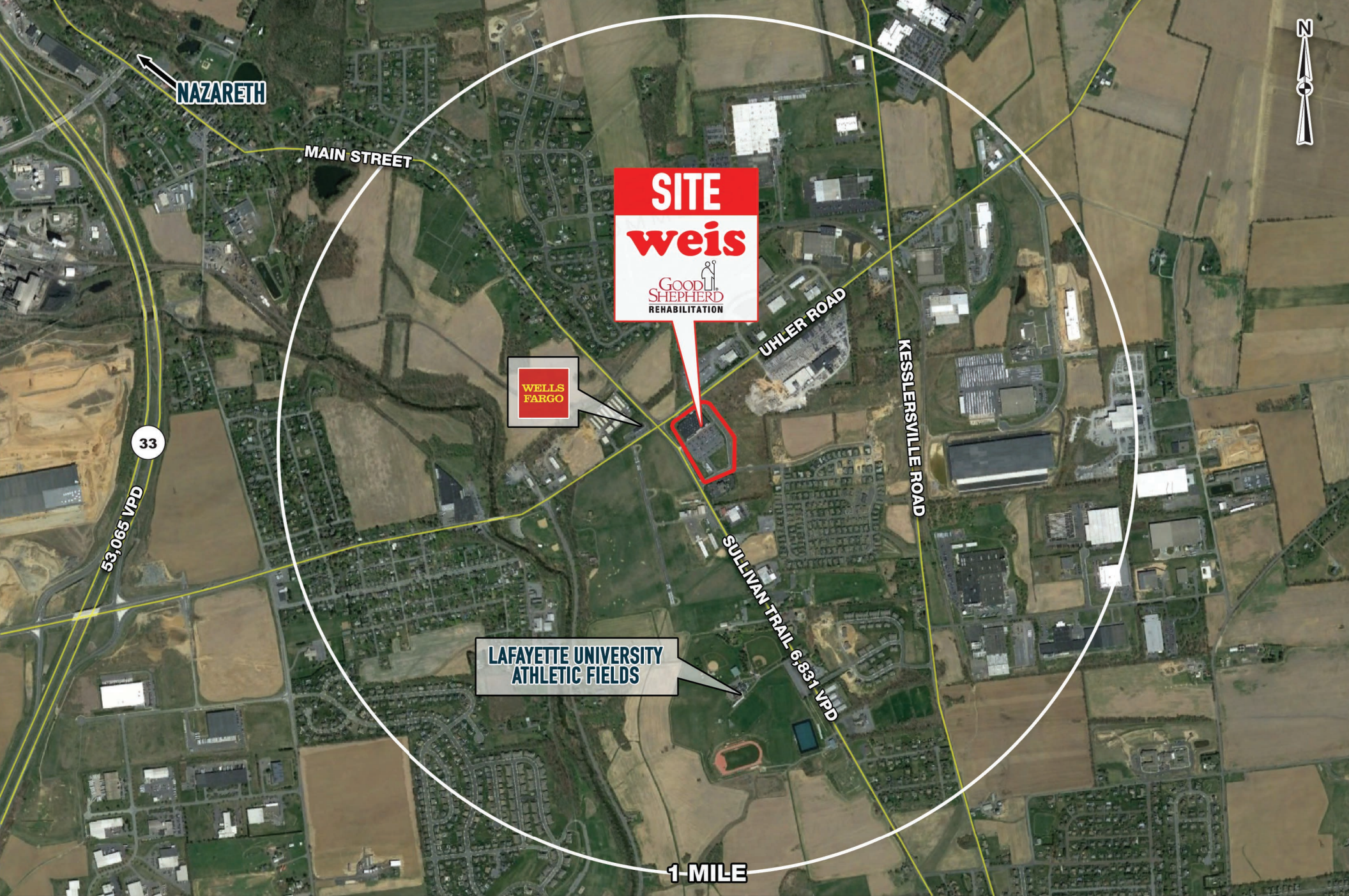
SULLIVAN TRAIL 6,831 VPD



The information and images contained herein are from sources deemed reliable. However, Metro Commercial Real Estate, Inc. makes no representation whatsoever as to their accuracy or authenticity. Images shown may be modified for illustrative purposes. Images may be out-of-date and not current. 2.23.21

3825 SULLIVAN TRAIL
FORKS TOWNSHIP, PA





NAZARETH

MAIN STREET

SITE
weis
GOOD SHEPHERD
REHABILITATION

WELLS
FARGO

UHLER ROAD

KESSELSVILLE ROAD

LAFAYETTE UNIVERSITY
ATHLETIC FIELDS

SULLIVAN TRAIL 6,831 VPD

33
53,065 VPD

1-MILE



The information and images contained herein are from sources deemed reliable. However, Metro Commercial Real Estate, Inc. makes no representation whatsoever as to their accuracy or authenticity. Images shown may be modified for illustrative purposes. Images may be out-of-date and not current. 2.23.21

3825 SULLIVAN TRAIL
FORKS TOWNSHIP, PA



