



LOCATION:	1808 Front Street Slidell, LA 70458
PRICE:	\$635,000
BUILDING SIZE:	8,094 Square Feet
SITE AREA:	26,834 Square Feet
PARKING:	30+ Spaces
PROPERTY TYPE:	Mixed Use, Flex Space, Office Building with ground floor retail/ restaurant space
ZONING:	C-3, Central Business District

This is the former East St. Tammany Chamber of Commerce Building located in the heart of Slidell's commercial corridor on historic Front Street. There is approximately 4,095 square feet on the first floor and 3,999 square feet on the second floor. The property has over 30 on-site parking spaces. The ground floor is well suited for restaurant or retail use and the second floor is built out as office space. The property is handicap accessible and has 5 half bath restrooms and an elevator.

FOR MORE INFORMATION CONTACT:

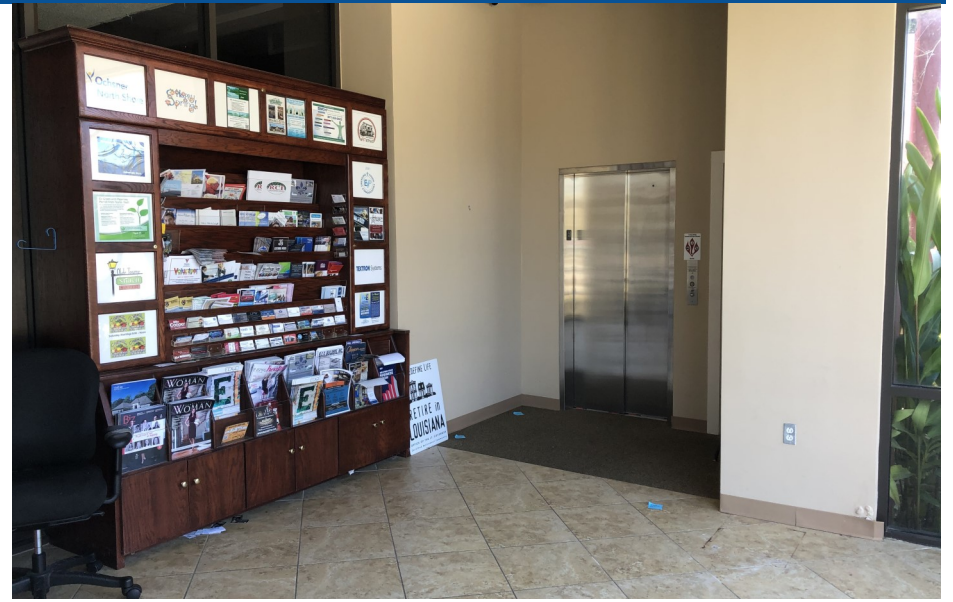
**MICHAEL POU**

**(504) 525-9763**

**mpou@talbot-realty.com**

1808 FRONT STREET

SLIDELL, LA



1808 FRONT STREET

SLIDELL, LA



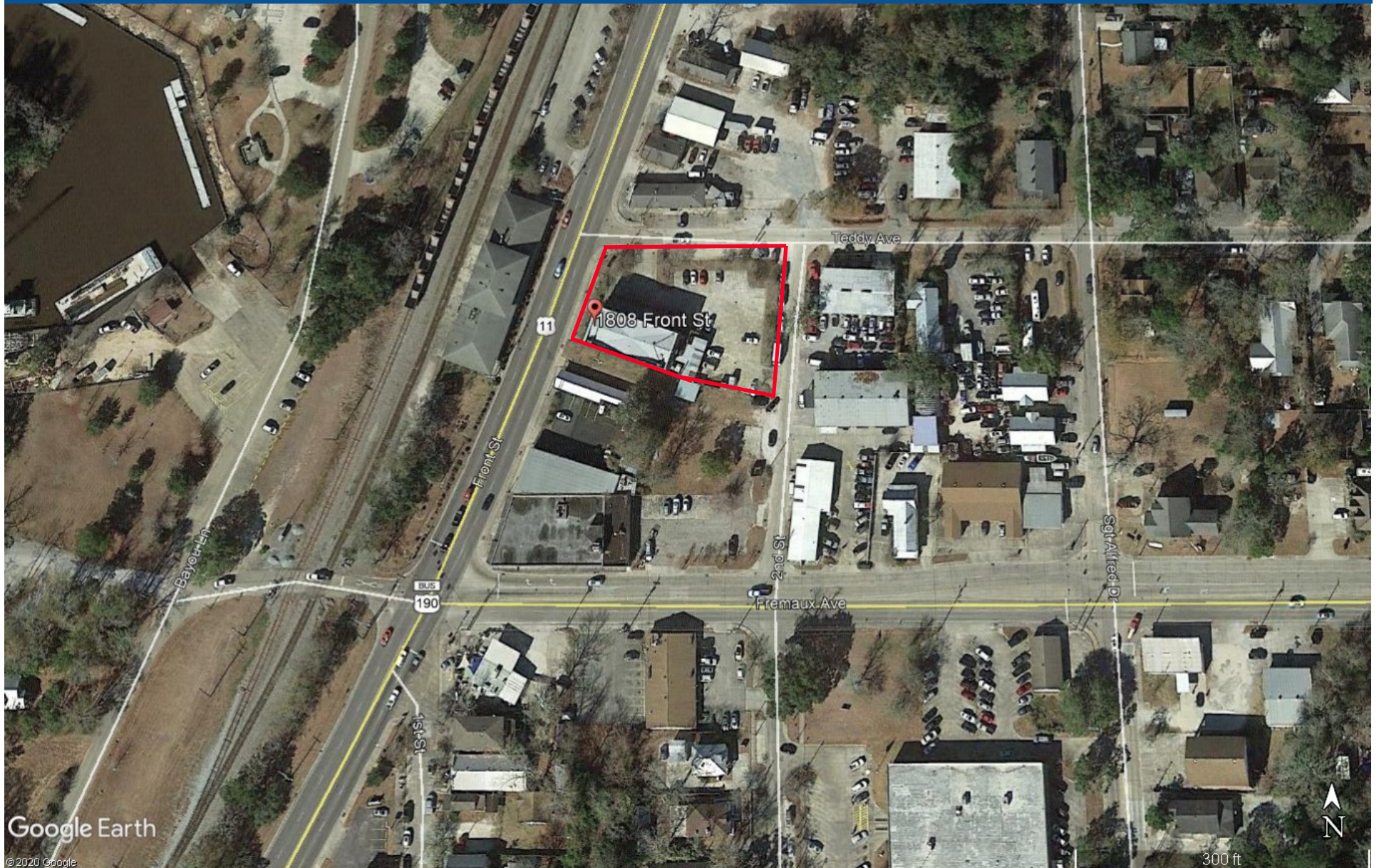
1808 FRONT STREET

SLIDELL, LA



1808 FRONT STREET

SLIDELL, LA



**2018 AVD (0.2 Miles from Subject Property): 19,477**

**1808 Front Street**

**Area Demographics Summary**

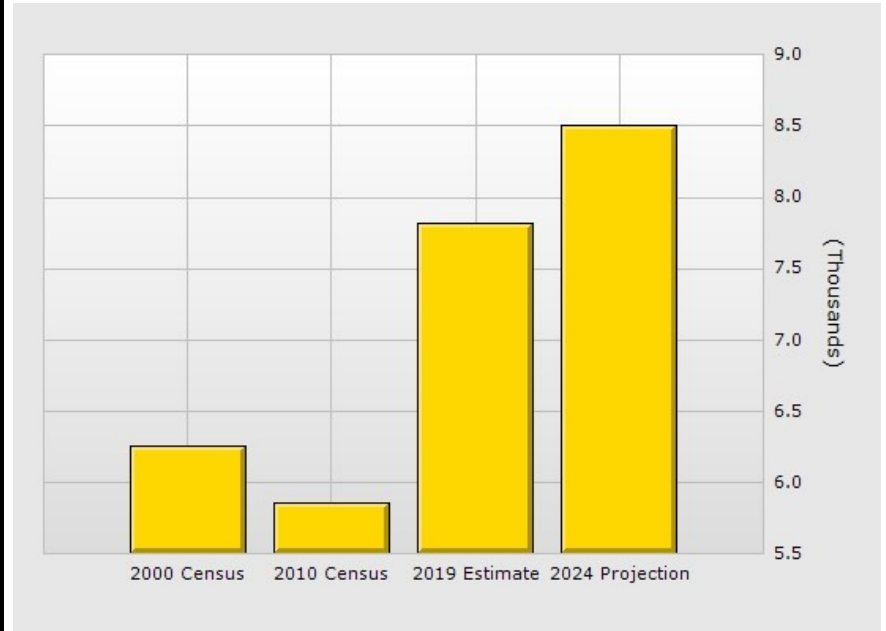
**Population**

	<b>1 Mile</b>	<b>3 Mile</b>	<b>5 Mile</b>
2019 Total Population:	7,812	47,401	85,364
2024 Population:	8,506	49,902	89,884
Pop Growth 2019-2024:	8.88%	5.28%	5.29%
Average Age:	38.00	38.20	38.90

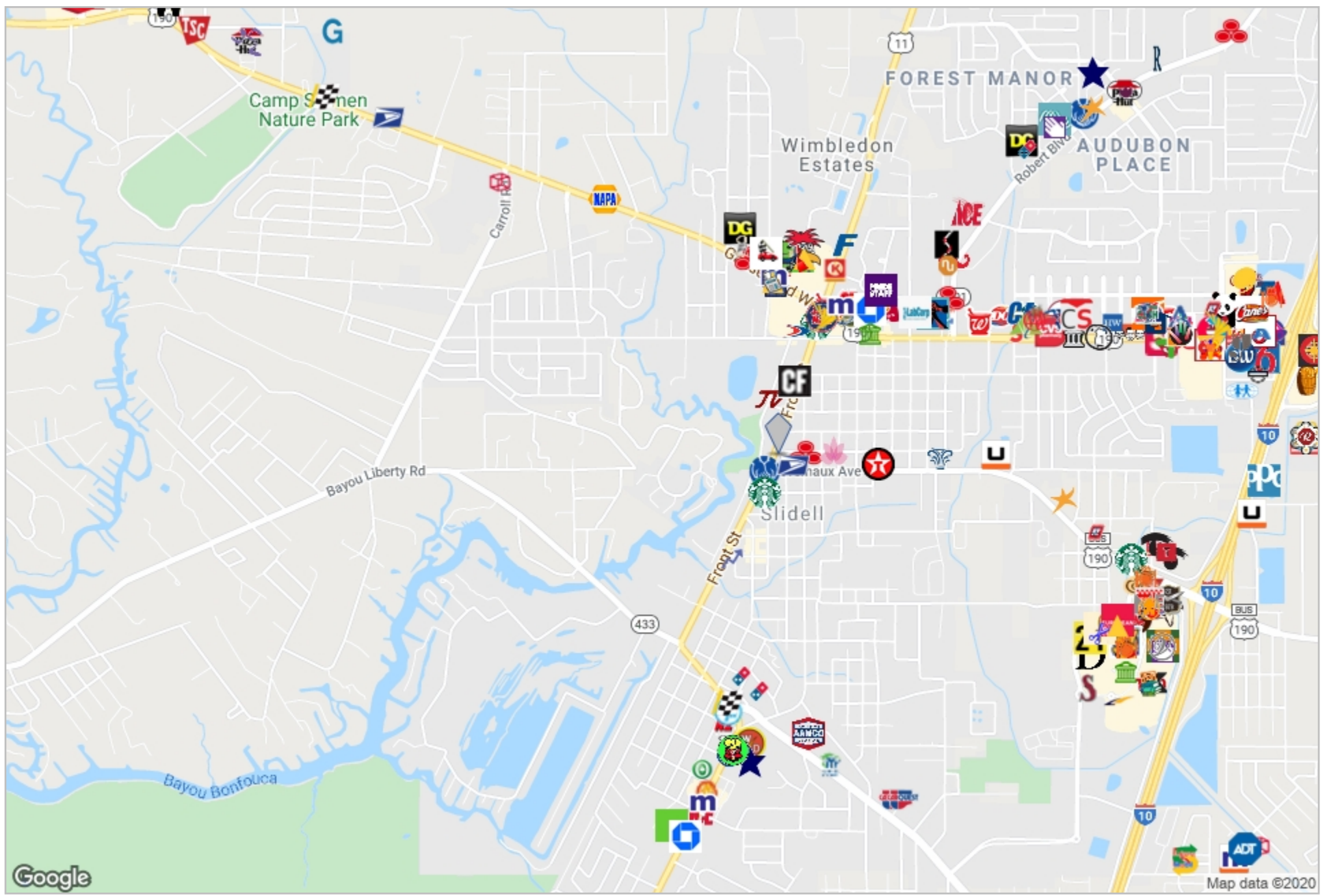
**Households**

2019 Total Households:	3,021	17,362	31,814
HH Growth 2019-2024:	9.10%	5.21%	5.26%
Median Household Inc:	\$39,837	\$53,332	\$59,567
Avg Household Size:	2.60	2.70	2.60

**1 Mile**



# 1808 front st retail 1



Copyrighted report licensed to Talbot Realty Group - 243213  
Logos are displayed to depict store locations only and are the property of their respective owners.



03-02-2020