



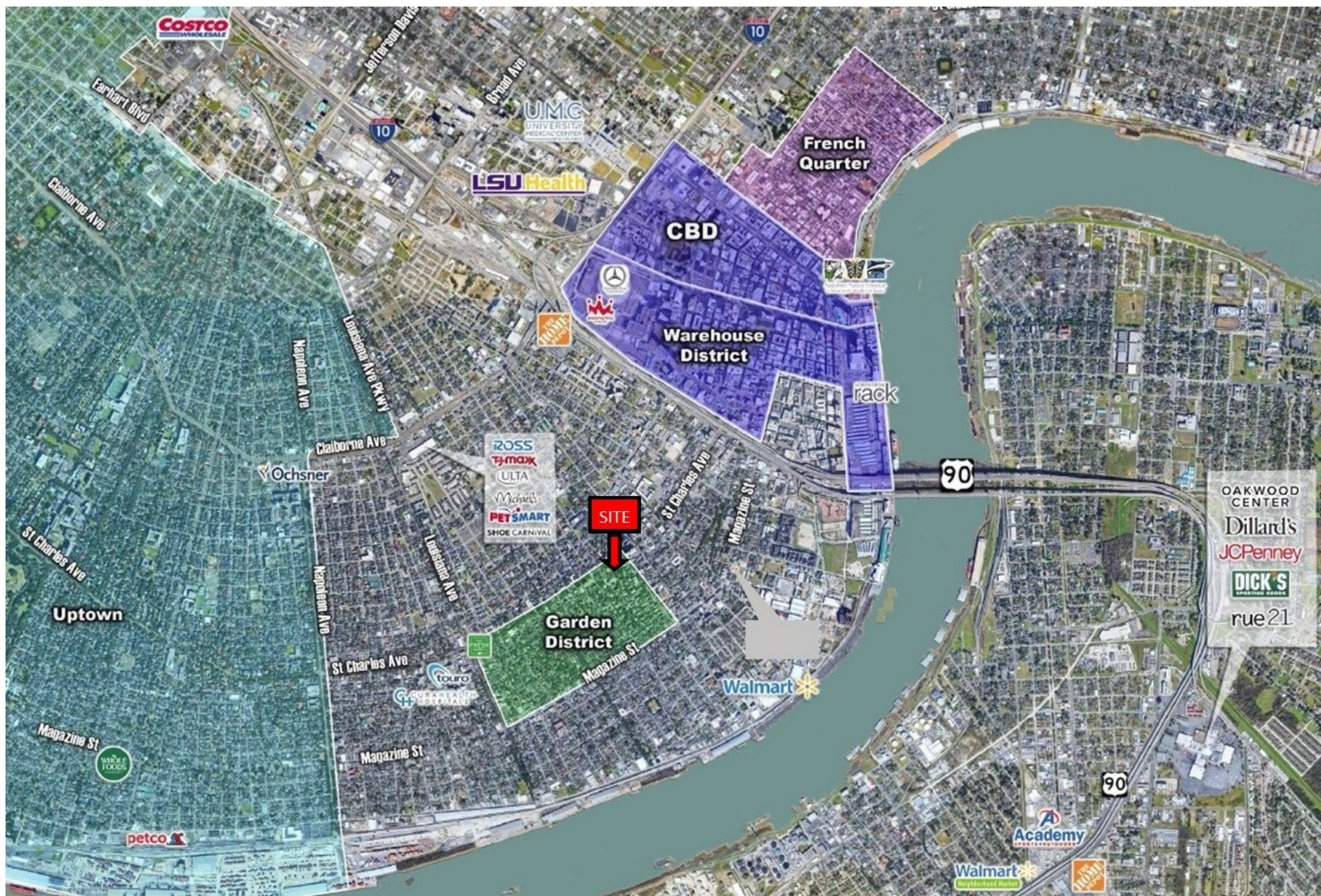
LOCATION:	1539 Jackson Avenue New Orleans, LA 70130	
RENTAL RATE:	\$22.00 PRSF, Gross	
AVAILABLE SPACES:	Suite 415 (ALL ROOMS):	1, 186 RSF
	Suite 610 (ALL ROOMS):	559 RSF
	Suite 630:	442 RSF
	*610 & 630 can be combined.	
TOTAL AVAILBLE:	2,187 RSF	
PARKING:	Surface lot reserved	
ZONING:	MU-1, Medium Intensity Mixed-Use District	

This property is a mid-rise Garden District office building located on Jackson Avenue, and only 1/2 block from St. Charles Avenue and the street car line. There are 51 available, reserved parking spots located across the street at a rate of \$75.00 per month, per space. Break rooms are located on each floor.

FOR MORE INFORMATION CONTACT:

MICHAEL P. POU, CPM®, MCR
(504) 525-9763 OFFICE
(504) 915-5082 CELL
MPOU@TALBOT-REALTY.COM

DAVID "COLE" RICHARDSON
(504) 525-9763 OFFICE
(318) 265-2653 CELL
DCRICHARDSON@TALBOT-REALTY.COM



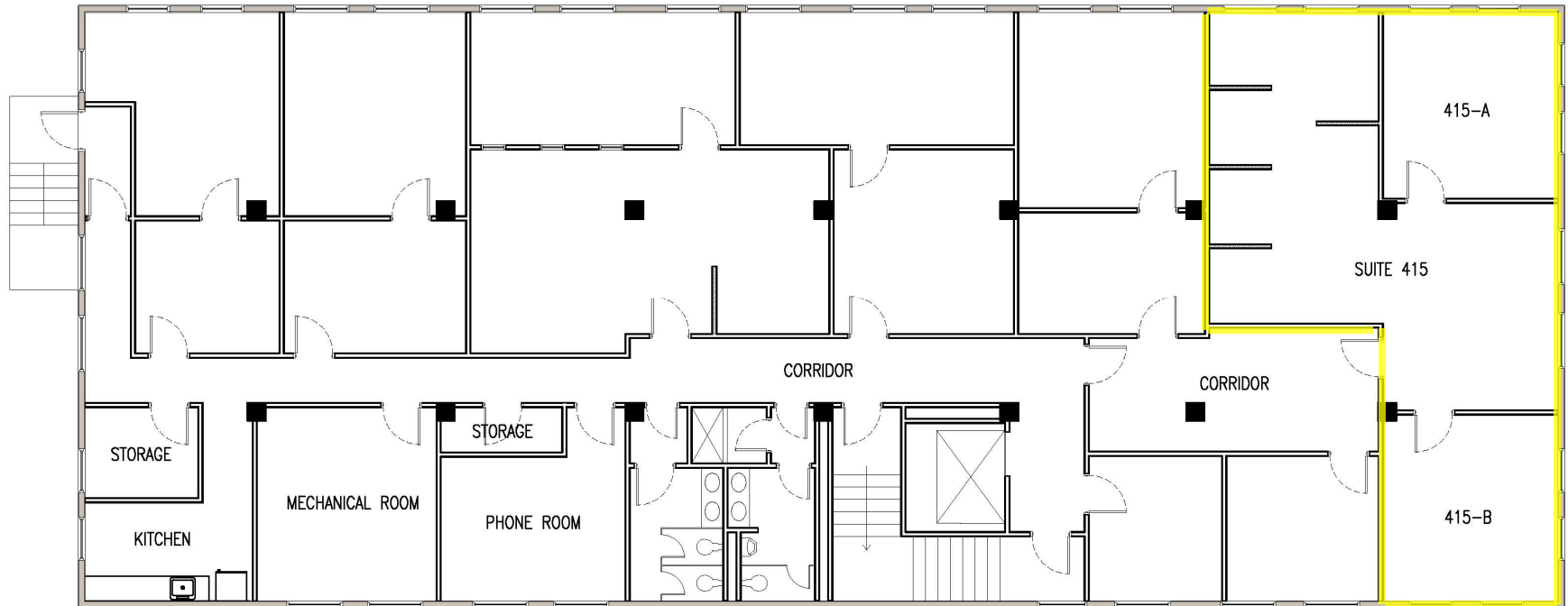
1539 JACKSON AVENUE

NEW ORLEANS, LA



AVAILABLE SPACE

4TH FLOOR



4TH FLOOR PLAN
SCALE: 1/8" = 1'-0"

SUITE 415 (ALL ROOMS): 1,186 RENTABLE SF

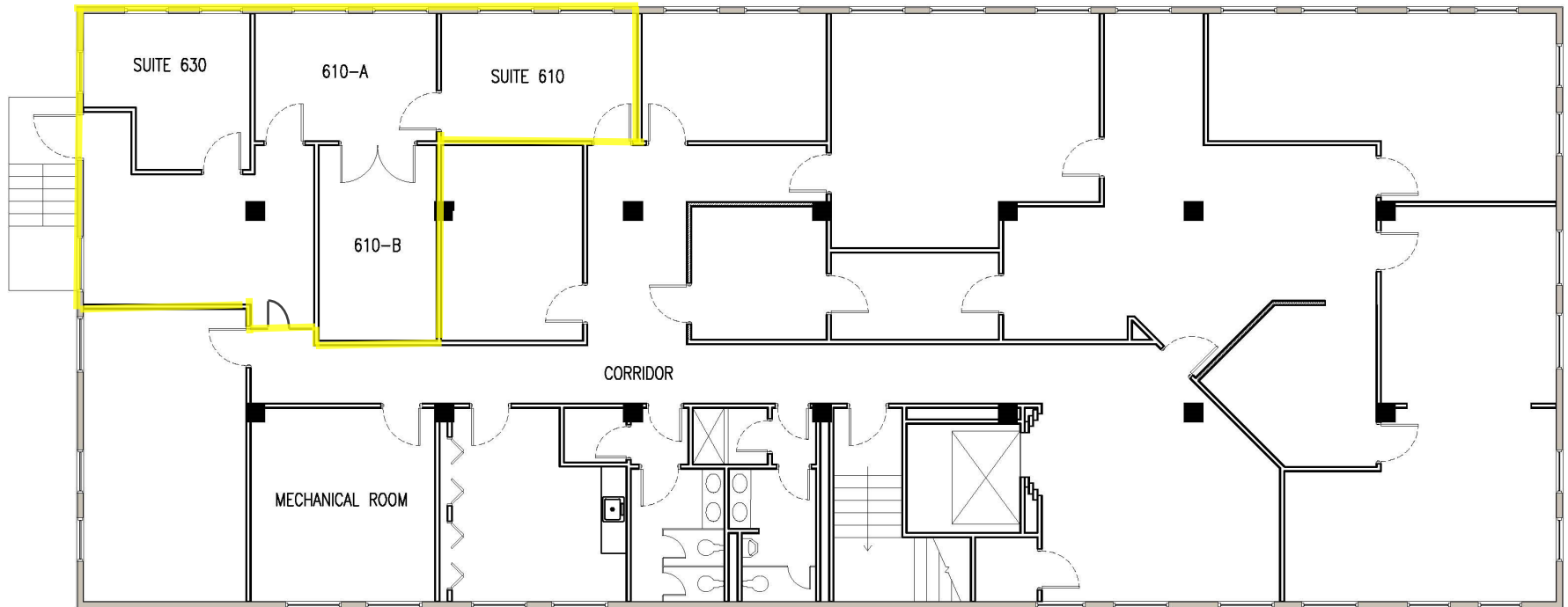


1539 JACKSON AVENUE

NEW ORLEANS, LA

AVAILABLE SPACE

6TH FLOOR



6TH FLOOR PLAN
SCALE: 1/8" = 1'-0"

SUITE 610 (ALL ROOMS): 559 RENTABLE SF
SUITE 630: 442 RENTABLE SF
TOTAL CONTIGUOUS: 1,001 RENTABLE SF

