

2707 S. CAROLYN AVE, SUITE 2

OFFICE / CALL CENTER SPACE AVAILABLE



2707 S. Carolyn Ave, Suite 2
Sioux Falls, SD 57106



6,563 SF



\$9.00 / SF NNN
Estimated NNN: \$3.39 / SF

LOCATION

Office / call center space is located on the highly desirable Louise corridor with easy access to I-229

DESCRIPTION

- Located near Agan Drywall, Sturdevant's, I-29 Brick, Tile & Stone Company, Home Depot, and Menards
- Floor plan includes large open areas suitable for cubicles, training rooms and large loft storage areas; very flexible space
- Now Available
- Property is also available for sale
- Contact Broker to schedule showing

SCOTT BLOUNT

605.231.1882 | scott@lloydcompanies.com

101 S. Reid Street Ste. 201, Sioux Falls, SD 57103 | 605.323.2820

Find out more at LloydCompanies.com | Information deemed reliable, but not guaranteed.

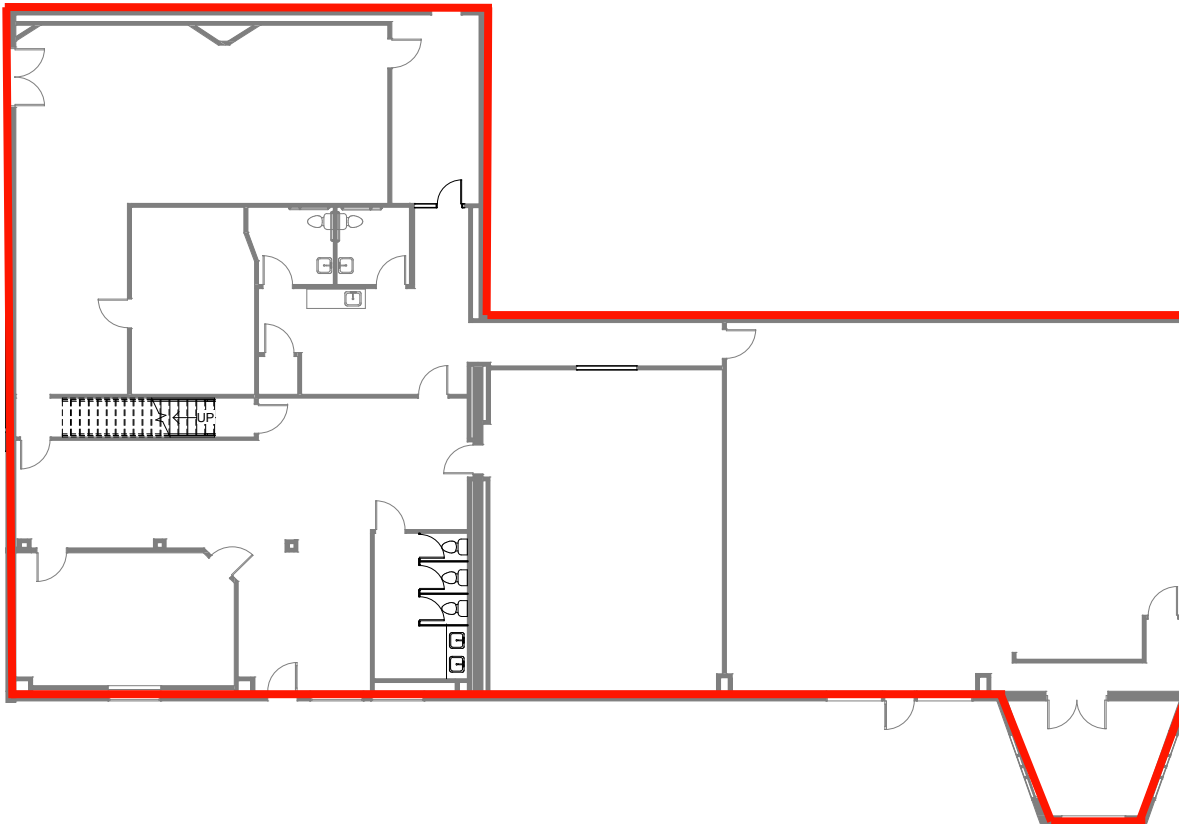
2707 S. CAROLYN AVE, SUITE 2

OFFICE / CALL CENTER SPACE AVAILABLE



FLOOR PLAN

Concept only; subject to change



SCOTT BLOUNT 605.231.1882 | scott@lloydcompanies.com

101 S. Reid Street Ste. 201, Sioux Falls, SD 57103 | 605.323.2820

Find out more at LloydCompanies.com | Information deemed reliable, but not guaranteed.

2707 S. CAROLYN AVE, SUITE 2

OFFICE / CALL CENTER SPACE AVAILABLE



INTERIOR PICTURES



SCOTT BLOUNT 605.231.1882 | scott@lloydcompanies.com

2707 S. CAROLYN AVE, SUITE 2

OFFICE / CALL CENTER SPACE AVAILABLE



AREA MAP



SCOTT BLOUNT | 605.231.1882 | scott@lloydcompanies.com

101 S. Reid Street Ste. 201, Sioux Falls, SD 57103 | 605.323.2820
Find out more at LloydCompanies.com | Information deemed reliable, but not guaranteed.