



PROPERTY FEATURES

- Lot 155 ft. X 100 ft.
- Zoning Local Business District, Class A (BA)
- Existing curb cuts
- Great for retail including service providers medical/professional office
- Adjoining parcels vacant land available for development
- Heavy foot traffic and bike lanes
- Clean environmental

CONTACT EXCLUSIVE AGENT:

Bart Feinberg

Director of Brokerage, Licensed Associate Broker

315.447.8668

bfeinberg@suttoncos.com

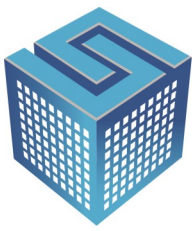
SUTTON REAL ESTATE COMPANY

525 Plum Street, Suite 100

Syracuse, New York 13204

315.424.1111

www.suttoncos.com

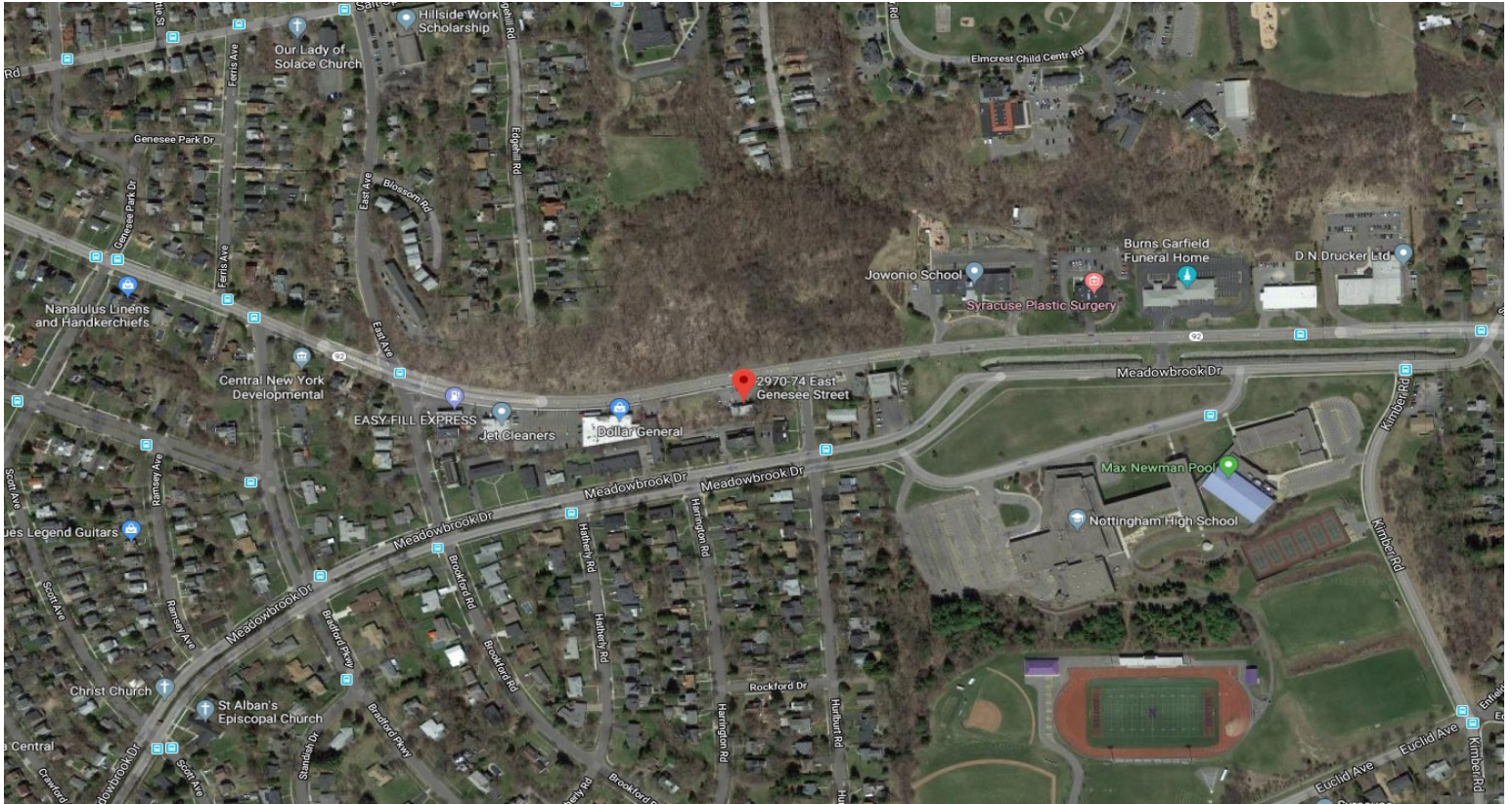


SUTTON

REAL ESTATE COMPANY

FOR SALE | DEVELOPMENT SITE

2970 East Genesee St., Syracuse, NY 13204



DEMOGRAPHICS

| | 1 Mile | 3 Mile | 5 Mile |
|---------------------------------|----------|----------|----------|
| Population | 14,732 | 112,064 | 201,024 |
| Households | 5,907 | 44,455 | 81,055 |
| Average Household Income | \$52,214 | \$38,037 | \$43,017 |

Source: ESRI

TRAFFIC COUNTS

- East Genesee Street—7,638

Source: ESRI

CONTACT EXCLUSIVE AGENT:

Bart Feinberg

Director of Brokerage, Licensed Associate Broker

315.447.8668

bfeinberg@suttoncos.com

SUTTON REAL ESTATE COMPANY

525 Plum Street, Suite 100

Syracuse, New York 13204

315.424.1111

www.suttoncos.com

All information contained herein is from sources deemed reliable and is submitted subjected to errors, omissions, changes in price or other conditions, prior sale, leasing without notice. Principals should not rely solely upon the information contained herein.