

A skyline
view that
suits you.

STAND ABOVE THE REST

It's the
perfect fit

ONE LIBERTY PLACE wants to place you in the sky in style. This creative opportunity to lease the two highest full floors in the Building, and in Center City, Philadelphia, along with ground floor space, offers a promotion to the clouds. The stunning panoramic views from the top make this a dream space.



CLICK TO PLAY VIDEO

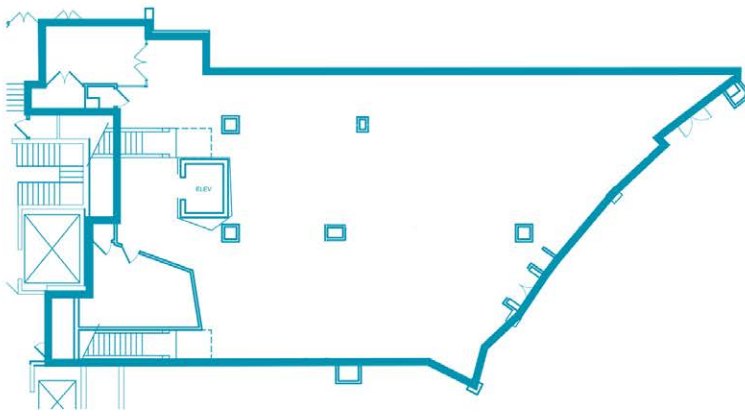
Redefine high quality with
a space in the sky



A LUXURIOUS SPACE TO
PLACE YOUR PRODUCT



AN UNFATHOMABLE
VIEW TO MAKE YOUR
DEBUT

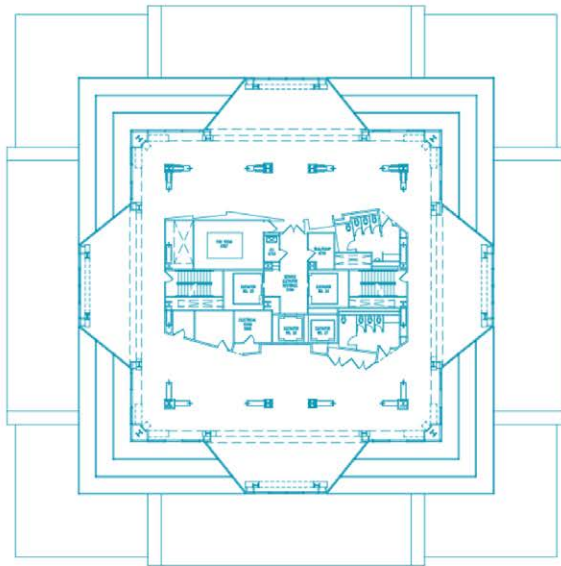
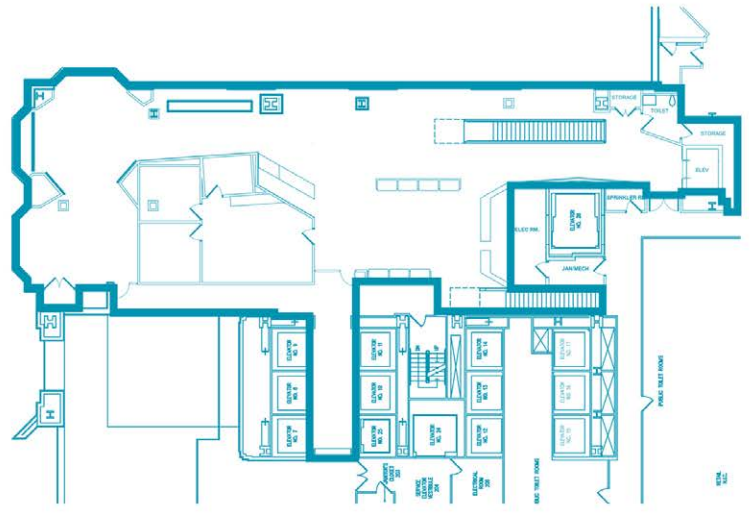


**1st Floor
Suite 104 & 106**
4,611 GLA

DOWNLOAD
FLOOR PLAN

**2nd Floor
Suite 202**
5,805 GLA

DOWNLOAD
FLOOR PLAN



57th Floor
10,297 SF

DOWNLOAD
FLOOR PLAN

58th Floor
6,878 SF

DOWNLOAD
FLOOR PLAN

