

**RETAIL SPACE**

# 48 MERCER STREET

West block between Broome and Grand Streets

**SOHO, MANHATTAN**

NEW YORK | NY

**7,900 SF**  
For Lease

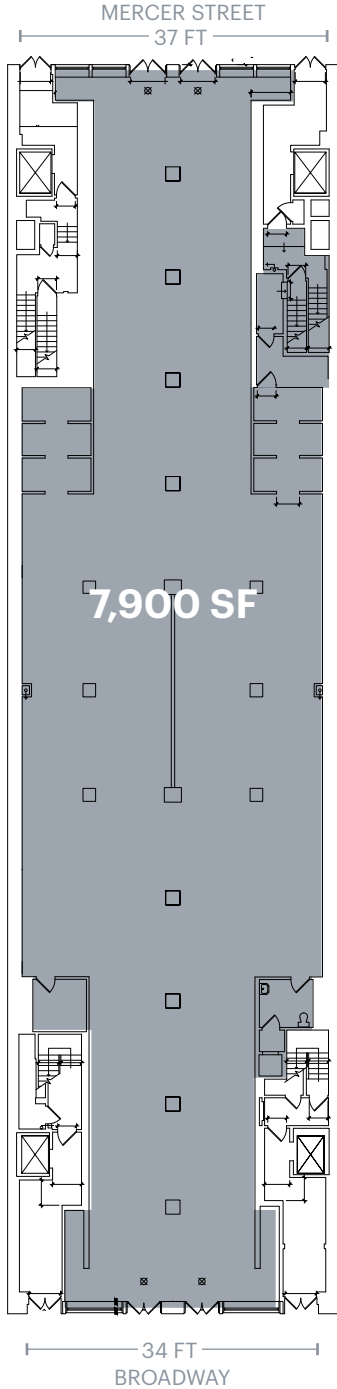


ARTIST'S RENDERING

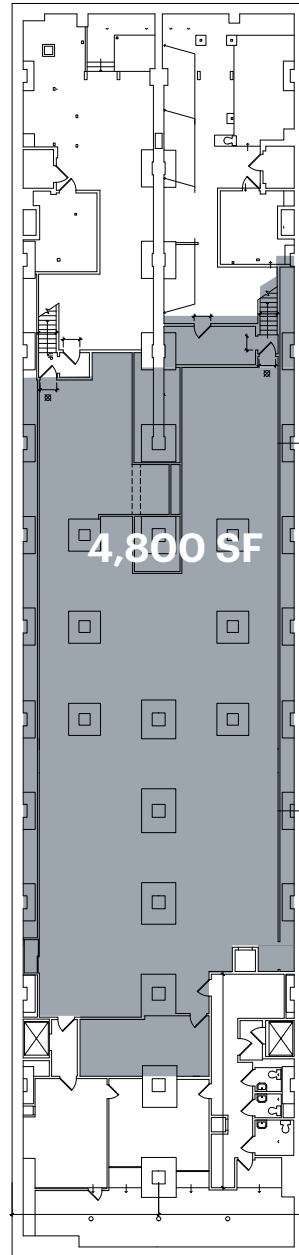
**RIPCO**  
REAL ESTATE

# FLOOR PLANS

## GROUND FLOOR



## BASEMENT



### SIZE

Ground Floor 7,900 SF  
Basement 4,800 SF

### ASKING RENT

Upon Request

### POSSESSION

May 2020

### FRONTAGE

37 FT on Mercer Street  
34 FT on Broadway

### NEIGHBORS

James Perse, KEETSA, IRO,  
Ganni (coming soon), Off-White c/o  
Virgil Abloh and Zadig & Voltaire

### Comments

Retail flagship opportunity  
in the dynamic SoHo district

Flag, banner and blade  
signage available

Dual entrances on Mercer Street  
and Broadway

---

### TRANSPORTATION

2017 Ridership Report

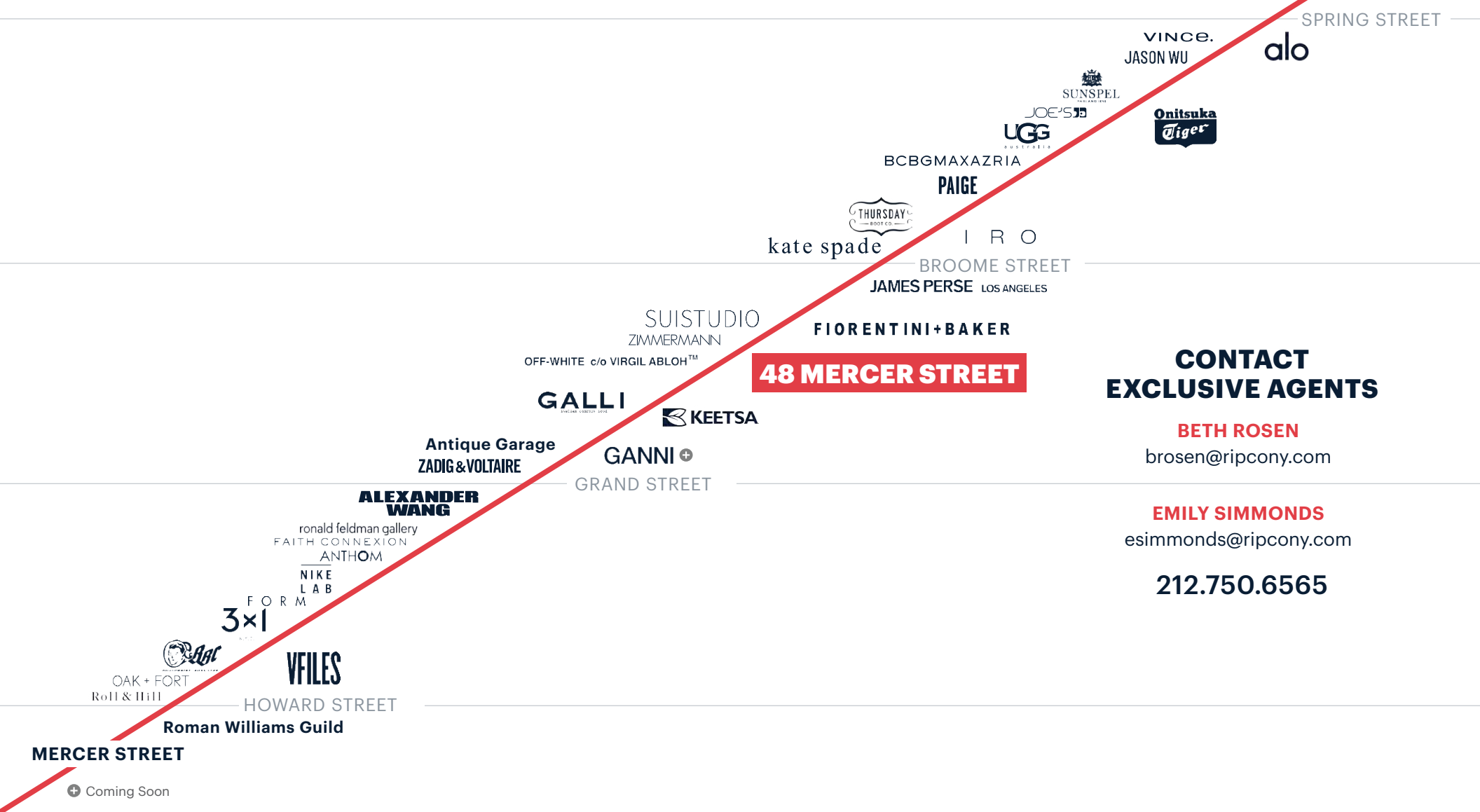
Canal Street **J N Q R W Z 6**  
Annual 16,285,516  
Weekday 47,601  
Weekend 76,893

MERCER INTERIOR



ARTISTS RENDERING

# AREA MAP



## CONTACT EXCLUSIVE AGENTS

**BETH ROSEN**  
brosen@ripcony.com

**EMILY SIMMONDS**  
esimmonds@ripcony.com

**212.750.6565**

**RIPCO**  
REAL ESTATE

150 East 58th Street  
15th Floor  
New York, NY 10155  
212.750.6565

Please visit us at [ripcony.com](http://ripcony.com) for more information

This information has been secured from sources we believe to be reliable, but we make no representations as to the accuracy of the information. References to square footage are approximate. Buyer must verify the information and bears all risk for any inaccuracies.