

RETAIL SPACE

455 WEST BROADWAY

East block between West Houston and Prince Streets

SOHO

NEW YORK | NY

2,770 SF

For Lease

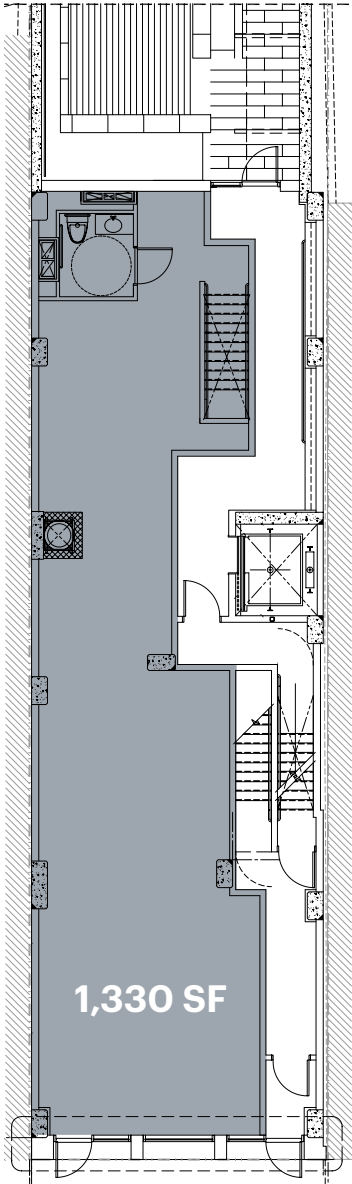


BHATIA
DEVELOPMENT

RIPCO
REAL ESTATE

SPACE DETAILS

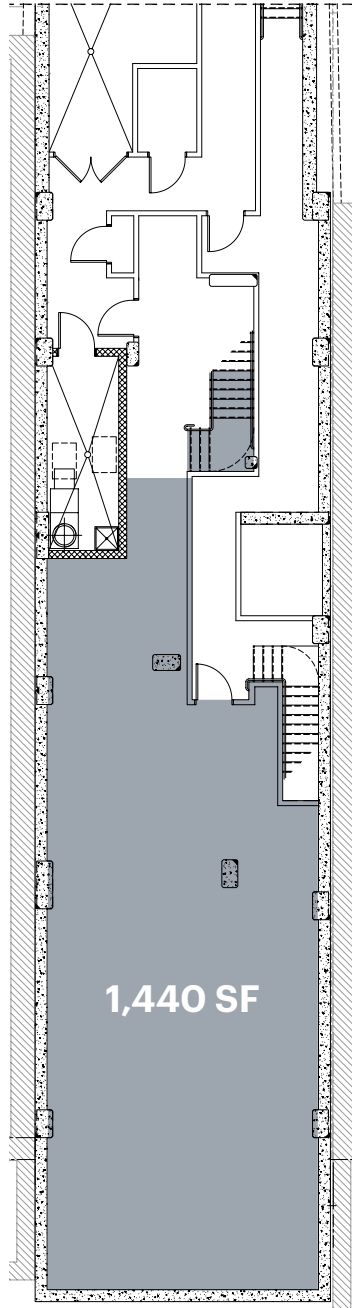
GROUND FLOOR



1,330 SF

25 FT
WEST BROADWAY

LOWER LEVEL



1,440 SF

LOCATION

East block between West Houston and Prince Streets

SIZE

Ground Floor 1,330 SF
Lower Level 1,440 SF

FRONTAGE

West Broadway 25 FT

CEILING HEIGHTS

Ground Floor 13.3 FT

STATUS

Currently Think Pink Nail Salon

POSSESSION

Arranged

TERM

Long-term

RENT

Upon request

NEIGHBORS

Coach, Ever Body, Happy Socks, Lamy, La Colombe, Martin Lawrence Galleries, Sadelle's

COMMENTS

This ground floor retail site sits below 16 luxury condominiums

Approved LPC-Blade signage for future tenant

Space is in move-in-ready condition containing a built-out Lower Level and ADA-compliant restroom

All uses considered

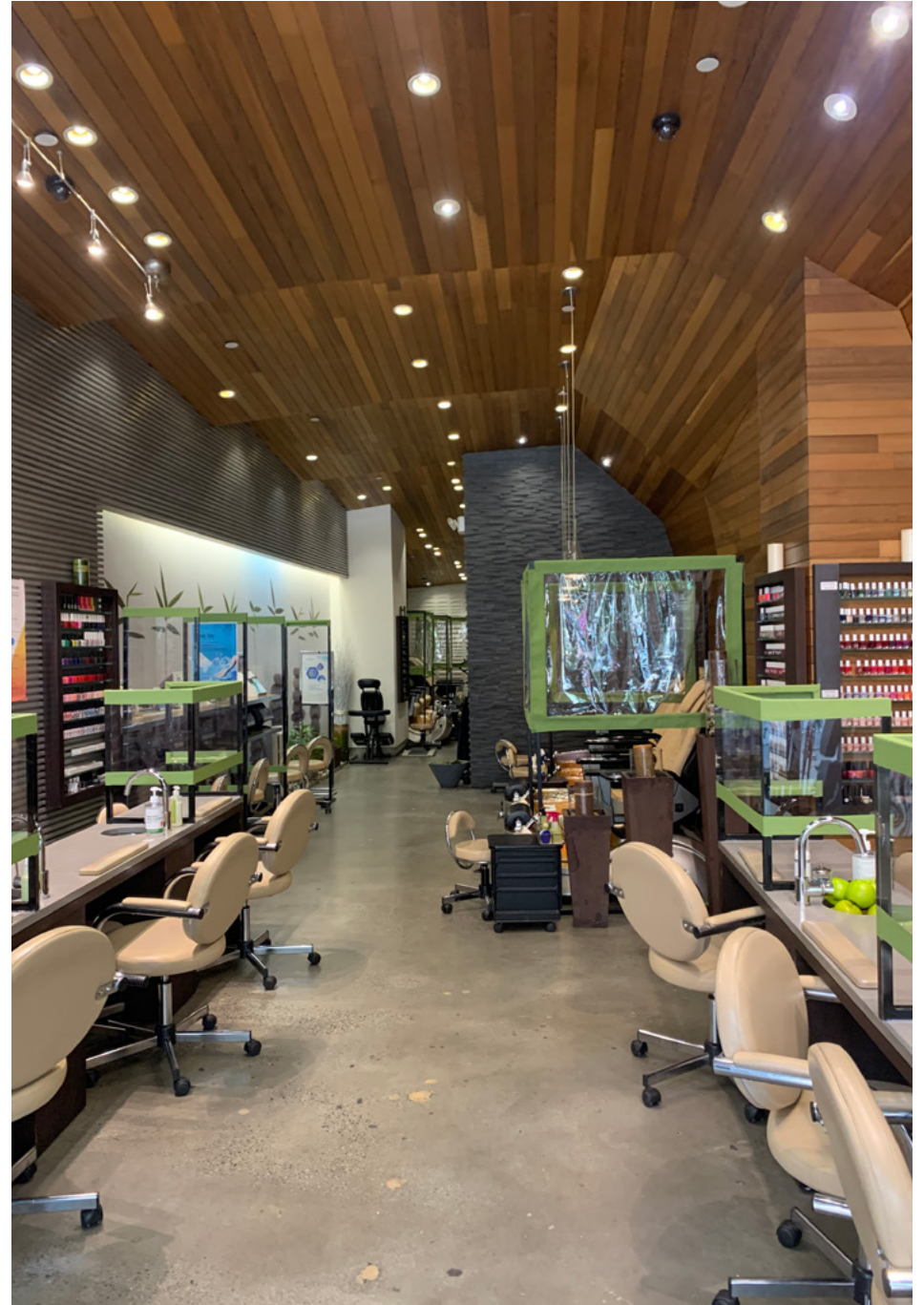
TRANSPORTATION

2019 Ridership Report

Prince Street **R W**
Annual 5,142,727
Weekday 14,408
Weekend 27,362

Spring Street **C E**
Annual 3,853,792
Weekday 13,054
Weekend 9,871

INTERIOR PHOTOS



AREA DEMOGRAPHICS - ¼ MILE RADIUS

ESTIMATED DAYTIME POPULATION

28,063

AVERAGE HOUSEHOLD INCOME

\$192,899

MEDIAN HOUSEHOLD INCOME

\$124,795

TOTAL HOUSEHOLDS

7,826

TOTAL BUSINESSES

2,589

TOTAL EMPLOYEES

23,556

SOHO DESCRIPTION

SoHo is one of New York's premier neighborhoods where a vast array of national and international retailers and a growing tech, media and entertainment industry thrives alongside a vibrant residential community. The SoHo Broadway business improvement district alone boasts a million and a half square feet of retail offerings, three million square feet of office space and over 21,000 workers. Together these businesses operate within SoHo's vibrant mixed-use neighborhood with 25,000 residents attracted to the area's accessibility, landmarked cast-iron architecture and cutting edge creative vibe.



AREA RETAIL

