

# THE VILLAGE CENTER ROUTE 739

LORDS VALLEY (BLOOMING GROVE), PA

±1,300 - 2,600 SF AVAILABLE FOR LEASE



## property highlights.

- Anchored by **weis**
- Located less than 1 mile from I-84
- Area boasts 3-season supplemental tourism business
- Total GLA: 57,862 SF

## stats.

2020 DEMOGRAPHICS*	1 MILE	3 MILES	5 MILES
EST. POPULATION	439	3,046	8,120
EST. HOUSEHOLDS	180	1,220	2,980
EST. AVG. HH INCOME	\$68,865	\$80,268	\$85,205

\*ESRI 2020



**METRO**<sup>®</sup>  
COMMERCIAL  
REAL ESTATE, INC.

MetroCommercial.com | PLYMOUTH MEETING, PA | MOUNT LAUREL, NJ

## get in touch.

### GREG JONES

office 610.825.5222  
direct 610.260.2662  
gjones@metrocommercial.com

### JAMAR GORDON

office 610.825.5222  
direct 610.260.2680  
jgordon@metrocommercial.com



AVAILABLE  
±1,300 SF

AVAILABLE  
±1,300 SF

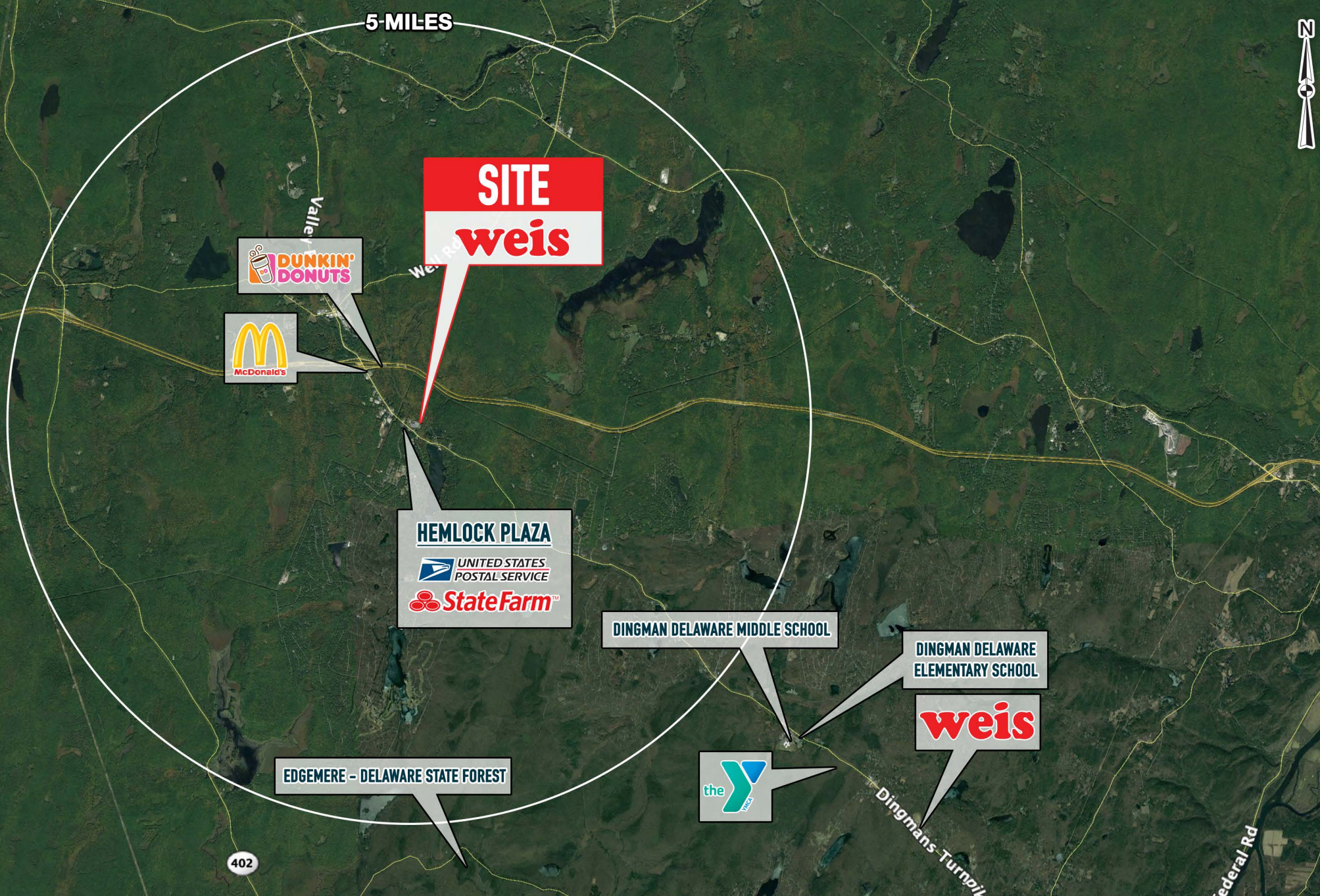
AVAILABLE  
±1,300 SF

The information and images contained herein are from sources deemed reliable. However, Metro Commercial Real Estate, Inc. makes no representation whatsoever as to their accuracy or authenticity. Images shown may be modified for illustrative purposes. Images may be out-of-date and not current. 8.3.17

# ROUTE 739 LORDS VALLEY, PA



5-MILES



**ROUTE 739**  
**LORDS VALLEY, PA**



The information and images contained herein are from sources deemed reliable. However, Metro Commercial Real Estate, Inc. makes no representation whatsoever as to their accuracy or authenticity. Images shown may be modified for illustrative purposes. Images may be out-of-date and not current. 8.3.17