

RETAIL/MEDICAL SPACE

310 EAST GUN HILL ROAD

Southeast Corner of Perry Avenue

NORWOOD

BRONX | NEW YORK

9,000 SF

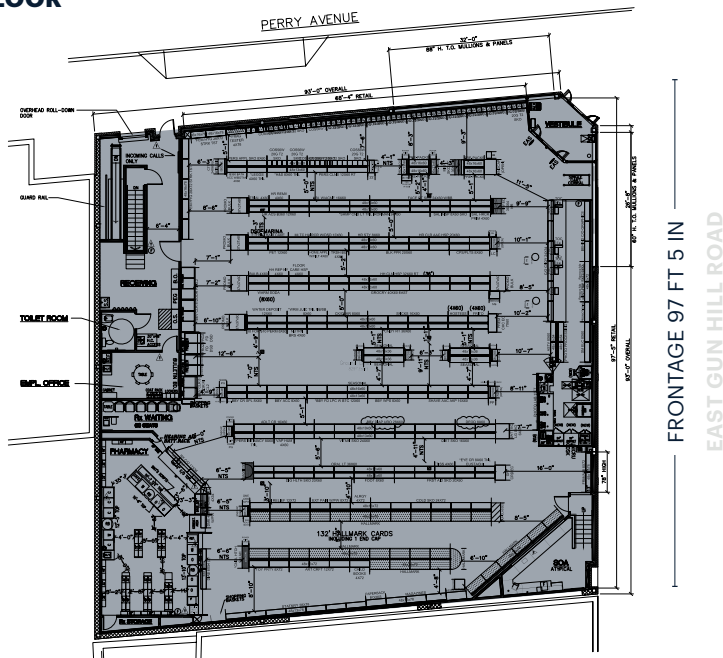
Available for Lease



RIPCO
REAL ESTATE

SPACE DETAILS

GROUND FLOOR



LOCATION

Southeast Corner of Perry Avenue

SIZE

Ground Floor	9,000 SF
Lower Level	7,000 SF
Total	16,000 SF

FRONTAGE

East Gun Hill Rd 97 FT 5 IN

RENT

Upon Request

FORMERLY

CVS

POSSESSION

Arranged

TERM

Negotiable

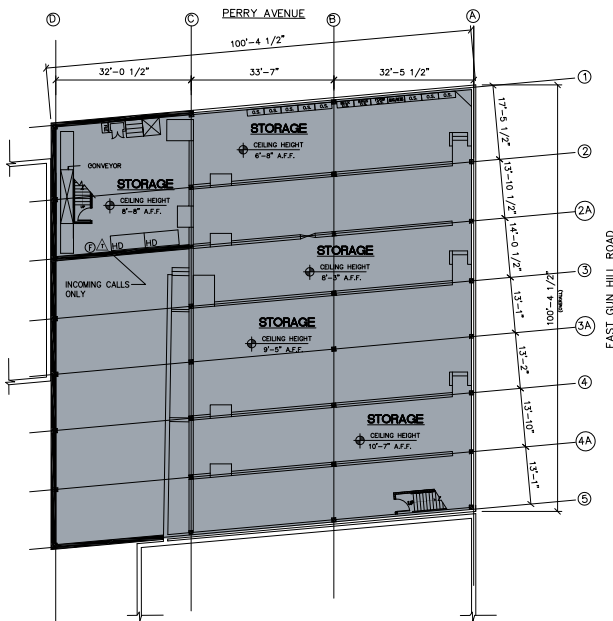
NEIGHBORS

Montefiore Hospital, North Central Bronx Hospital, Fine Fare, McDonald's

COMMENTS

Nearby North Central Bronx and Montefiore medical complex with a combined 1,723 beds and 2,960 physicians and clinical staff
Surrounded by residential
Move in ready condition
All uses considered

BASEMENT



TRANSPORTATION

2019 Ridership Report

Gun Hill Road

Annual	1,248,513
Weekday	7,022
Weekend	8,918

Mosholu Pkwy

Annual	2,491,758
Weekday	8,074
Weekend	9,190

AREA RETAIL



MILES MAHONY
 mmahony@ripcony.com
 718.233.6565

CHRIS WALTHER
 cwalth@ripcony.com
 718.233.6565

RIPCO
 REAL ESTATE

32 Court Street
 10th Floor
 Brooklyn, NY 11201
 718.233.6565

Please visit us at ripcony.com for more information

This information has been secured from sources we believe to be reliable, but we make no representations as to the accuracy of the information. References to square footage are approximate. Buyer must verify the information and bears all risk for any inaccuracies.