

140

CHURCH STREET
Tribeca, NYC



LEASED

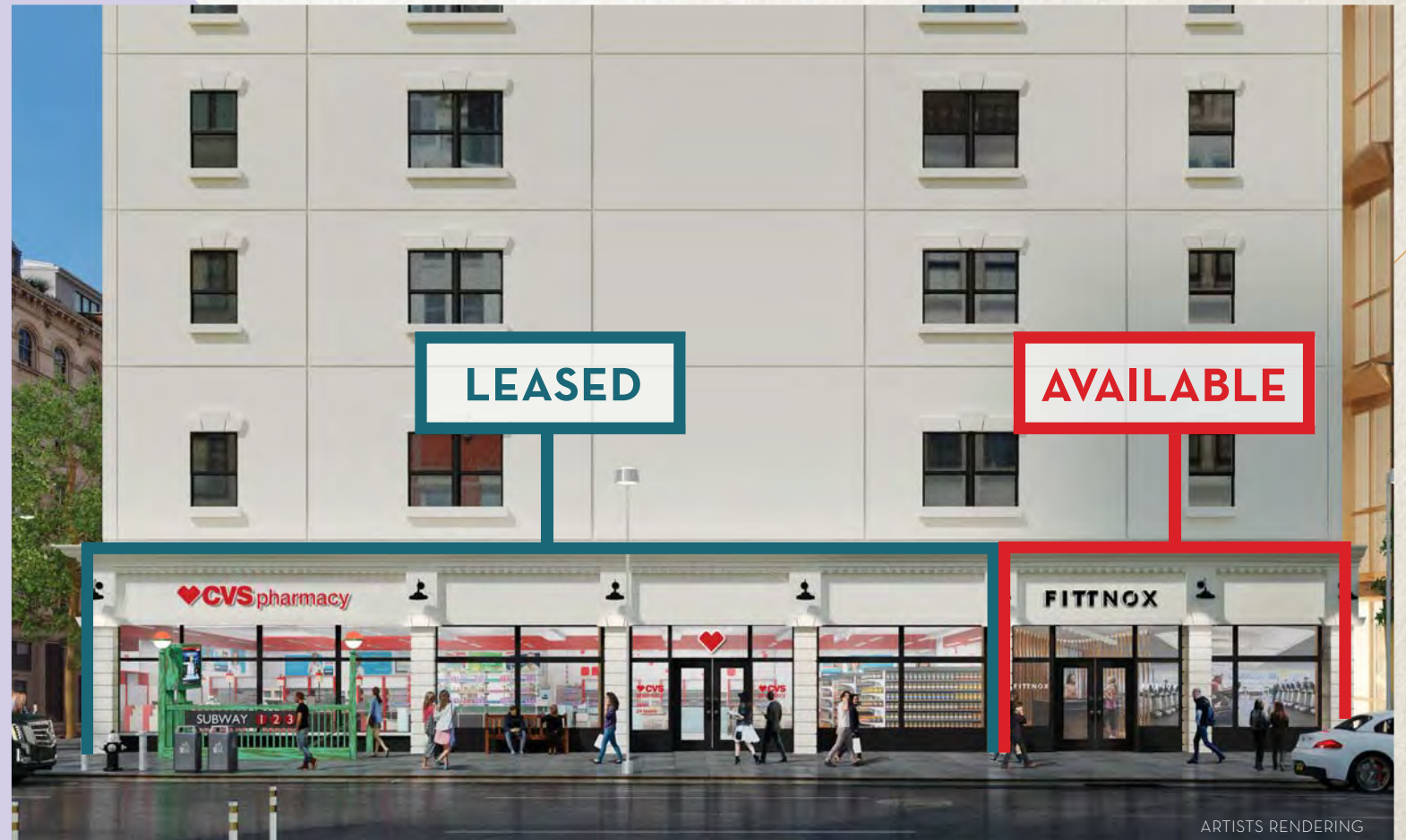
AVAILABLE



“

140 CHURCH STREET SITS IN THE HEART OF TRIBECA, ANCHORED BY THE WORLD TRADE CENTER OFFICE POPULATION, BEST-IN-CLASS RESTAURANTS, AS WELL AS MAJOR RETAIL BRANDS.

”





SMYTH
HOTEL

bluemercury
makeup • skincare • spa

WHOLE FOODS MARKET

pure barre
P lift • tone • burn P lift • tone • burn P

FREDERICK

STARBUCKS
COFFEE

STARBUCKS
COFFEE

EQUINOX

EQUINOX

GROUND FLOOR
424 SF

LOWER LEVEL
4,370 SF

CEILING HEIGHTS
14 FT - Ground Floor
10 FT 4 IN - Lower Level

FRONTAGE
21 FT on
Church Street

POSSESSION
Q3 2020

COMMENTS

New storefronts, ADA elevator,
and stairs to be installed

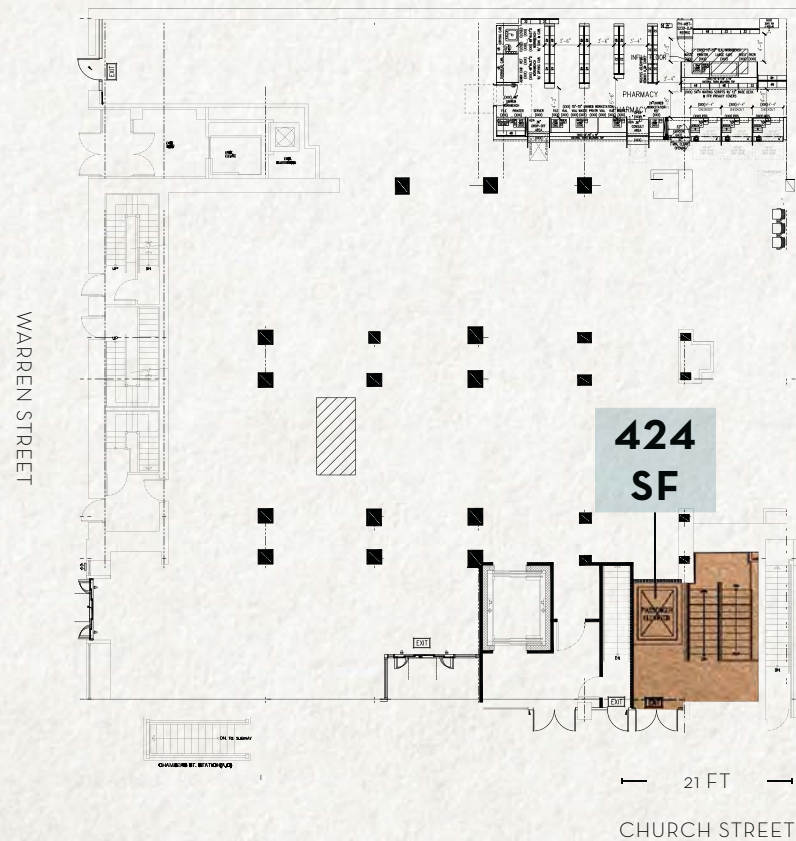
Ideal for fitness, medical and dry use

Located in the heart of Tribeca

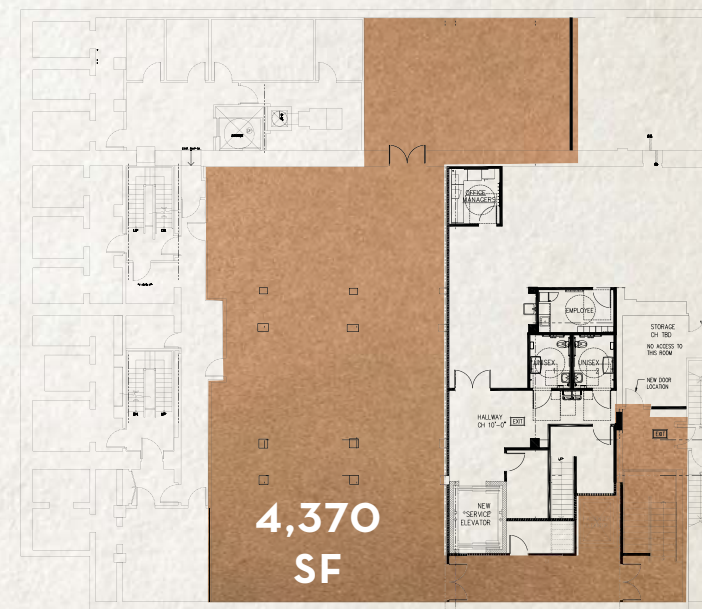
Strong visibility, great frontage on Church Street
and heavy foot traffic

Subway entrance to 2, 3, A, C & E
trains on corner

GROUND FLOOR



LOWER LEVEL





17,362

Estimated Population



86%

Have college degrees



\$212,130

Average household income



60%

Have a household income over \$200K



\$429.5M

of retail expenditure



Approximately

21M

Annual riders on five subway lines at the base of the building





140
 CHURCH STREET
 Tribeca, NYC

● NEW RESIDENTIAL DEVELOPMENT
 ⊕ COMING SOON

CONTACT EXCLUSIVE AGENTS

ANDREW MANDELL
 amandell@ripcony.com
 212.750.0705

BEN SABIN
 bsabin@ripcony.com
 646.290.2018

RIPCO
 REAL ESTATE

150 East 58th Street
 15th Floor
 New York, NY 10155
 212.750.6565

Please visit us at ripcony.com for more information

This information has been secured from sources we believe to be reliable, but we make no representations as to the accuracy of the information. References to square footage are approximate. Buyer must verify the information and bears all risk for any inaccuracies.

- BROOKFIELD PLACE**
- Equinox
 - DVF
 - Hermes
 - Omega
 - Salvatore Ferragamo
 - Gucci
 - Burberry
 - Bottega Veneta
 - Vince
 - Saks Fifth Avenue
 - Hickey Freeman
 - Calypso
 - Bonobos
 - Zenga
 - Molton Brown
 - Paul Smith
 - Michael Kors
 - Paul Smith
 - Tory Burch
 - Sant Ambroeus

- WESTFIELD**
- Apple
 - Aesop
 - Tissot
 - Longines
 - Swatch
 - Eataly
 - Sephora
 - & Other Stories
 - London Jewelers
 - Stuart Weitzman
 - Turnbull & Asser
 - Victorias Secret