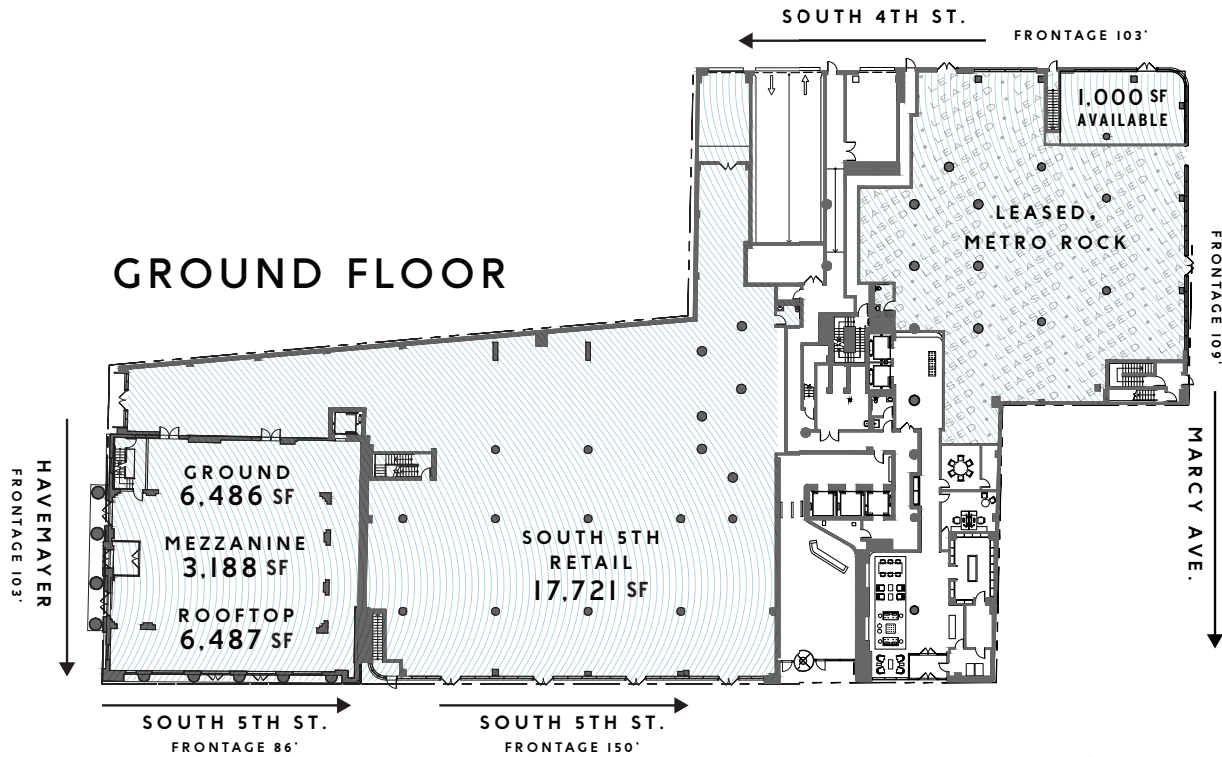


WILLIAMSBURG
ICONIC BROOKLYN
FLAGSHIP
RETAIL
OPPORTUNITY



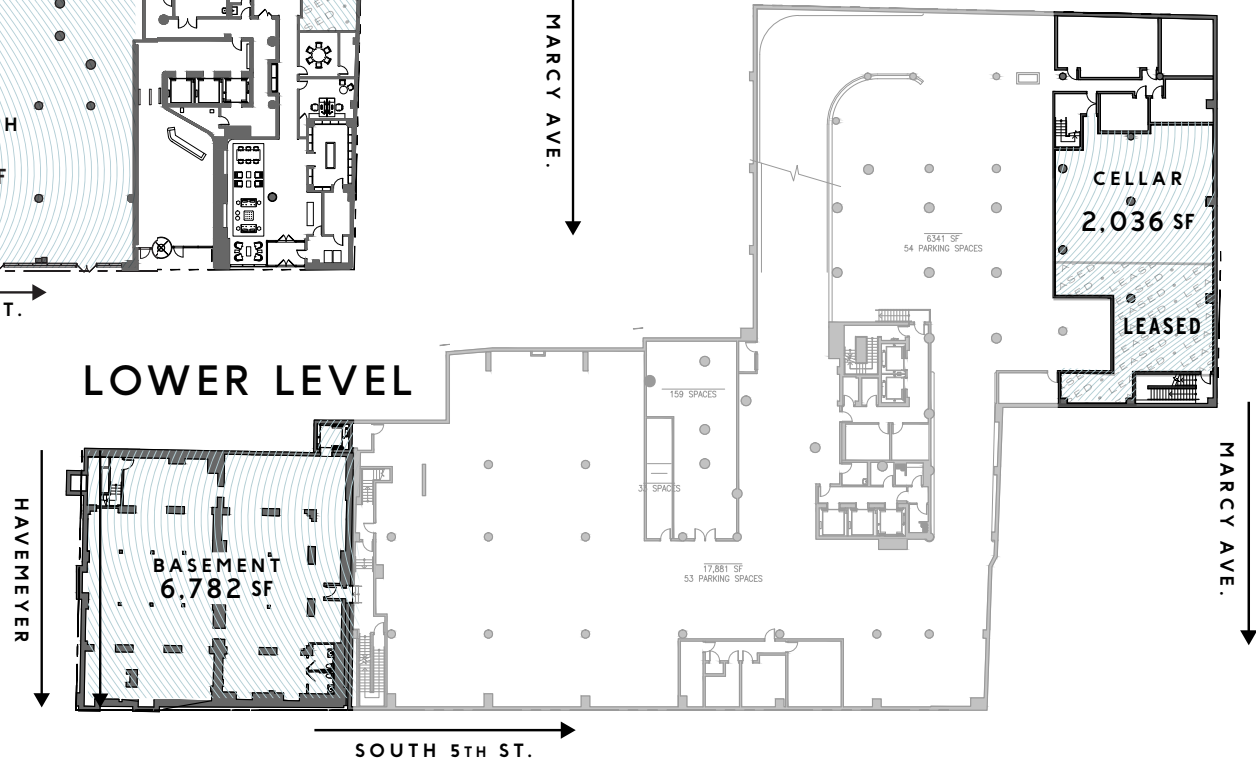
FLOORPLANS

GROUND FLOOR



- **PARKING** - 300 Space Garage, on-site
- **LOADING DOCKS** - Easy Access

LOWER LEVEL



UNIQUE SIGNAGE OPPORTUNITY



ARCHITECTURALLY SIGNIFICANT INTERIORS

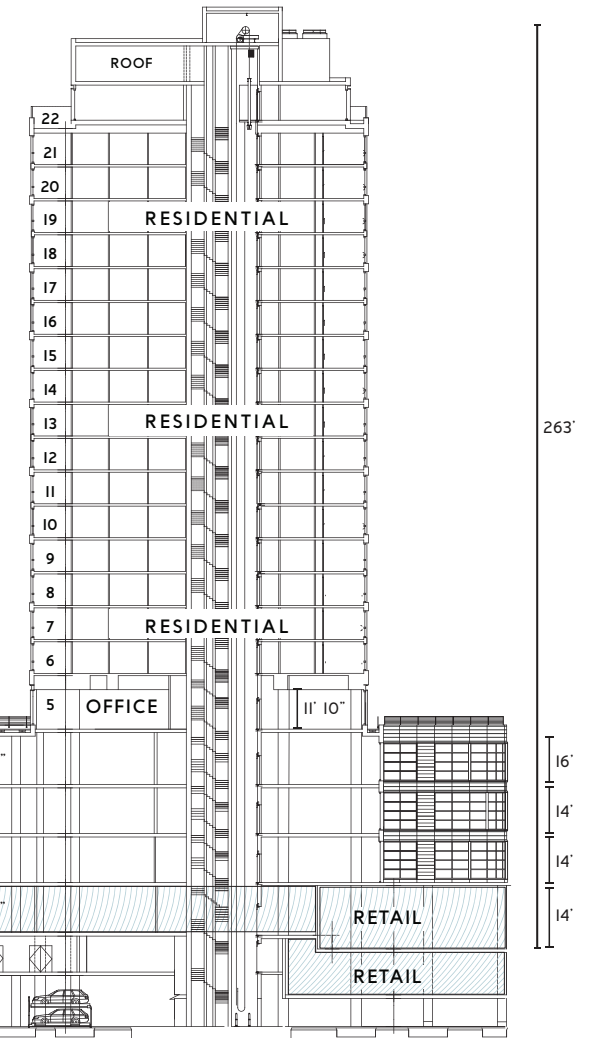


THE DIME

Positioned in the Heart of Southside Williamsburg

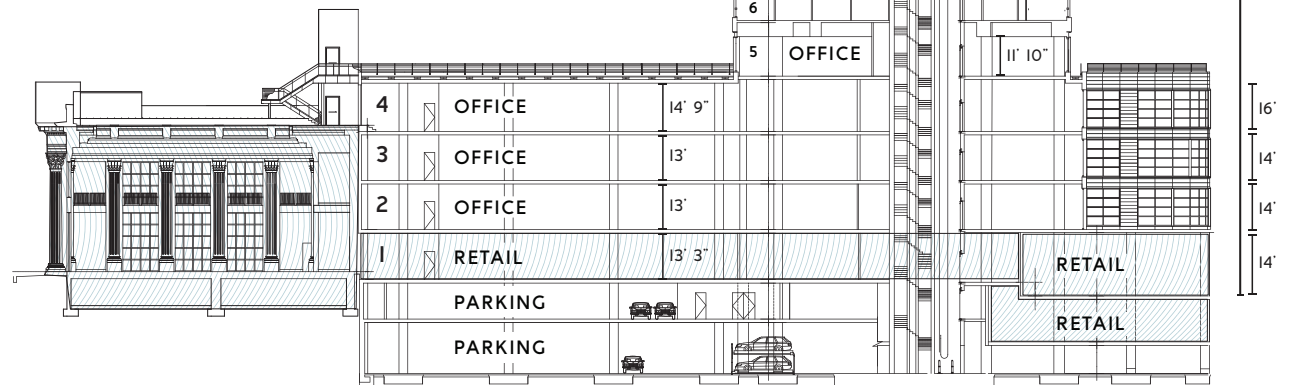
DESCRIPTION

The Dime is located at the base of a 23 story, state of the art mixed use tower, with approx. 177 residential units and 95,000 sq. feet of office space.



CEILING HEIGHTS

40 FEET	GROUND FLOOR OF BANK BUILDING
13-18 FEET	FIRST FLOOR OF NEW CONSTRUCTION
14 FEET	CELLAR



Proximity to Marcy Ave, JMZ Subway • One stop into Manhattan



← **420 KENT**
857 Residential Units

DOMINO SUGAR DEVELOPMENT
500,000sf of Office
2,800 Residential Units

BEDFORD AVE L-TRAINS
9.6 Million Annual Ridership →

285 SOUTH 5TH ST.
81 Residential Units

RETAIL
↓

RETAIL
↓

RETAIL →

MARCY AVE JMZ-Trains
4.2 Million Annual Ridership

The
DIME
177 Residential Units

WILLIAMSBURG BROOKLYN

LOCAL MAP

¼ MILE = 
40.7147°N, 73.9754°W

SELECTED BUSINESSES

- | | |
|-----------------------|-------------------------|
| 1 THE DIME | 25 LEVIS |
| 2 PETER LUGER | 26 JULIETTE |
| 3 DINER | 27 BAKERI |
| 4 MARLOW & SONS | 28 TOBY'S ESTATE COFFEE |
| 5 MARLOW & DAUGHTERS | 29 SMORGASBURG |
| 6 CITY ACRES MARKET | 30 FETTE SAU |
| 7 DOMINO DEVELOPMENT | 31 MILK BAR |
| 8 VICE MEDIA | 32 SWEET CHICK |
| 9 LOOSIE ROUGE | 33 MEATBALL SHOP |
| 10 PIES & THIGHS | 34 PETE'S CANDY STORE |
| 11 BAR BEAU | 35 WYTHE HOTEL |
| 12 TRAIFF | 36 REYNARD |
| 13 REBEN LUNCHEONETTE | 37 BK BREWERY |
| 14 MAIN DRAG MUSIC | 38 TORST |
| 15 4 HORSEMEN | 39 LLAMA INN |
| 16 WB CINEMAS | 40 KINGS CTY. IMPERIAL |
| 17 SWEATSHOP | 41 UNION POOL |
| 18 MAISON PREMIERE | 42 FORTUNATO BROTHERS |
| 19 APPLE | 43 SUZUME |
| 20 CATBIRD | 44 WIN SON |
| 21 MAST BROS | 45 BEAM |
| 22 J.CREW | 46 DEVOCIÓN |
| 23 MUSIC HALL | 47 FEATHERWEIGHT |
| 24 WHOLE FOODS | 48 BKLYN BALL FACTORY |

The
DIME
OFFICES

ALEX BEARD
abeard@ripcony.com
718.663.2640

JASON PENNINGTON
jpennington@ripcony.com
718.233.6565

ERIC FISHER
efisher@ripcony.com
646.290.2013



RIPCO
REAL ESTATE