

**STREET RETAIL**

# 70 FRONT STREET

Between Main and Washington Streets

**DUMBO**

BROOKLYN | NY

**2,040 SF**

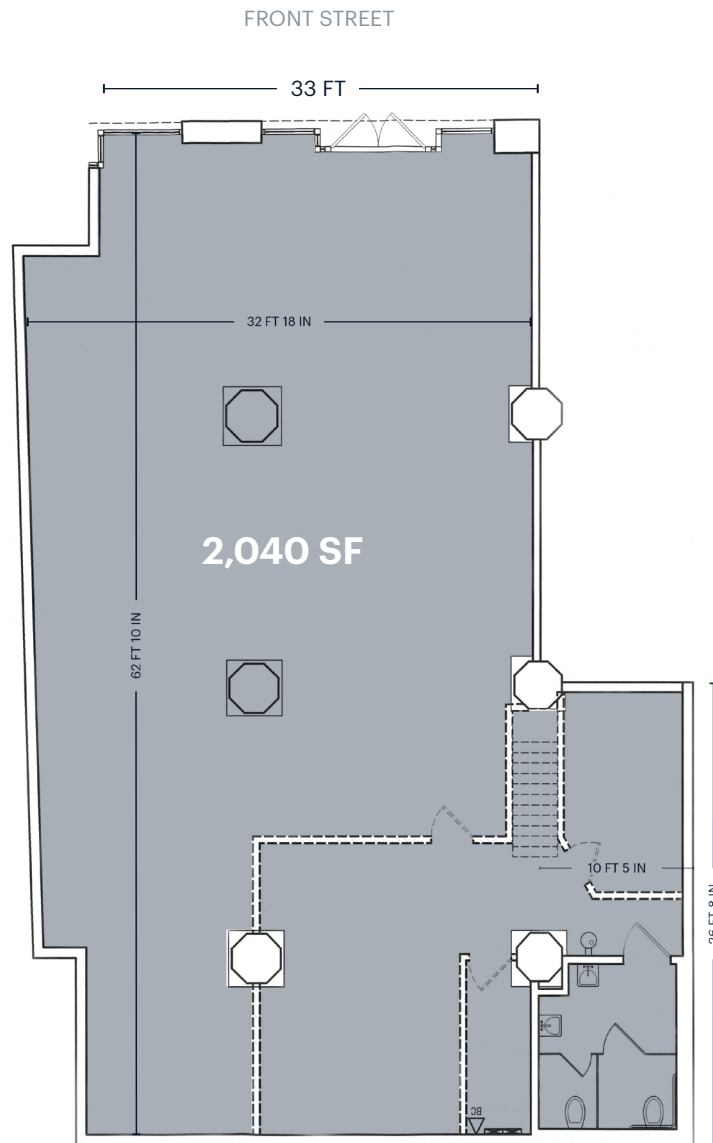
Available for Lease



**RIPCO**  
REAL ESTATE

# SPACE DETAILS

## GROUND FLOOR



### LOCATION

Between Main and Washington Streets

### SIZE

Ground Floor 2,040 SF

### FRONTAGE

Front Street 33 FT

### CEILING HEIGHTS

Ground Floor 15 FT 11 IN

### ASKING RENT

Upon Request

### FORMERLY

Journey Home

### POSSESSION

Immediate

### NEIGHBORS

Scotch and Soda, Rodd and Gun, Dumbo Market, SweetGreen, Pea & Pickels, Westville, Starbucks, Butler, Oddfellows Ice Cream Co, West Elm, Empire Stores

### COMMENTS

Prime Dumbo retail in a converted early 20th Century warehouse

Heaviest foot fall in the neighborhood

Site lines to one of the most Instagramed (view of Manhattan Bridge) locations in NYC

### TRANSPORTATION

2019 Ridership Report

#### York Street

Annual	3,927,129
Weekday	12,638
Weekend	13,024

#### High Street

Annual	3,536,860
Weekday	10,776
Weekend	14,503

## INTERIOR/ADDITIONAL PHOTOS



# AREA RETAIL



## CONTACT EXCLUSIVE AGENTS

**JASON PENNINGTON**  
 jpennington@ripcony.com  
 718.233.6565

**ALEX BEARD**  
 abeard@ripcony.com  
 718.233.6565

**RIPCO**  
 REAL ESTATE  
 32 Court Street  
 10th Floor  
 Brooklyn, NY 11201  
 718.233.6565

Please visit us at [ripcony.com](http://ripcony.com) for more information

This information has been secured from sources we believe to be reliable, but we make no representations as to the accuracy of the information. References to square footage are approximate. Buyer must verify the information and bears all risk for any inaccuracies.