

700 YORK ROAD

WARMINSTER, PA

±56,025 SF / ±9.15 ACRES LAND AVAILABLE FOR SALE



property highlights.

- Area Retailers: **Walmart** **Marshalls** **Wawa** **FINE WINE & GOOD SPIRITS** **Advance Auto Parts** **THE HOME DEPOT**
- Zoning: C2 (Commercial)
- Premiere junior box space and a pad site available next to a coming-soon brand new LIDL Grocery Store
- Access available from York Road and Roberts Road
- Ample parking available
- Large pylon available on York Road for future Tenant!
- ±400 Parking Spaces



stats.

2019 DEMOGRAPHICS*	1 MILE	3 MILES	5 MILES
EST. POPULATION	8,416	78,543	160,343
EST. HOUSEHOLDS	3,208	30,835	60,466
EST. AVG. HH INCOME	\$99,815	\$101,449	\$116,602

YORK ROAD TRAFFIC COUNT: 36,985 VPD *ESRI 2019



METRO[®]
COMMERCIAL
REAL ESTATE, INC.

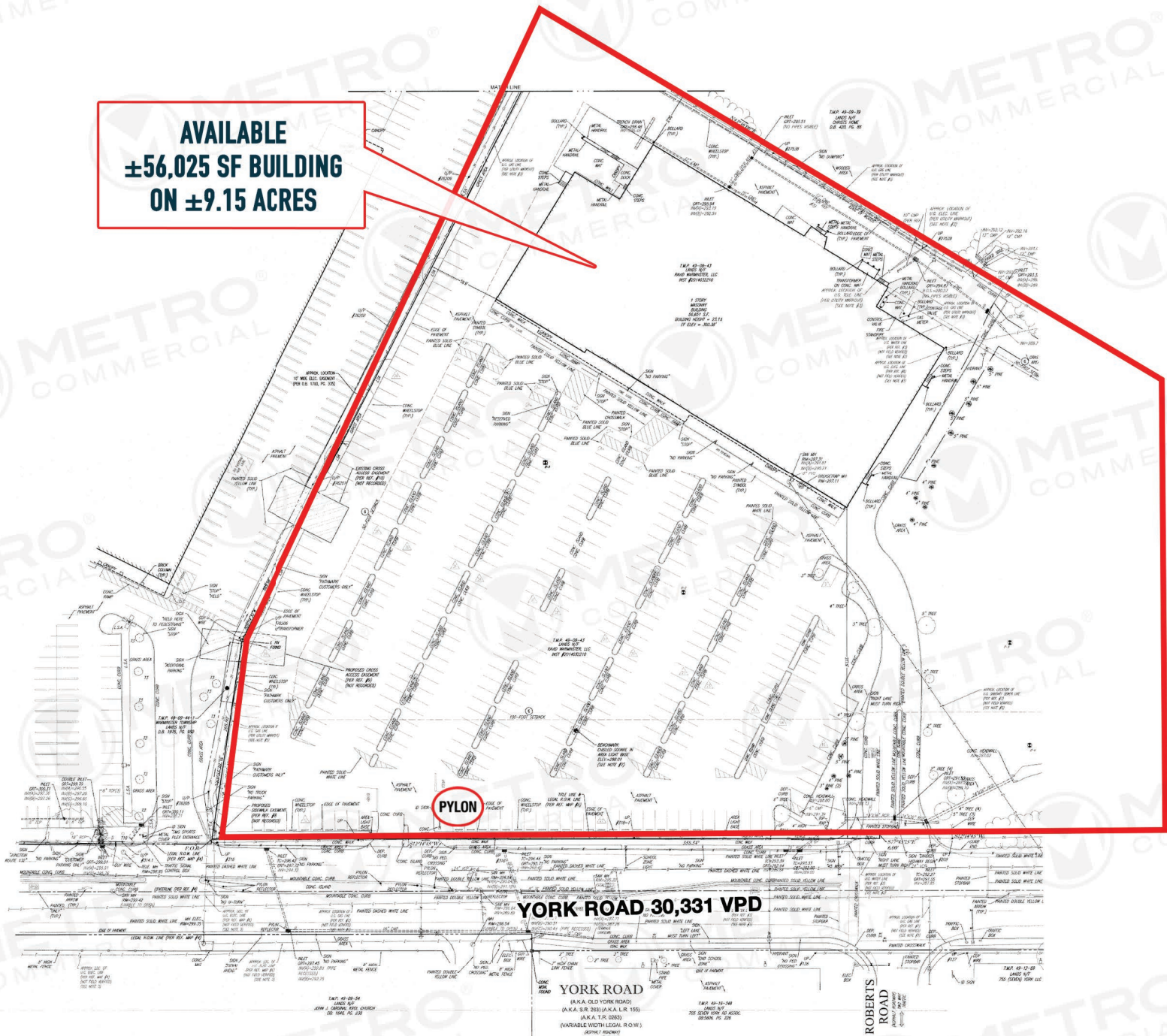
MetroCommercial.com | PLYMOUTH MEETING, PA | MOUNT LAUREL, NJ

get in touch.

GREG JONES

office 610.825.5222
direct 610.260.2662
gjones@metrocommercial.com

**AVAILABLE
±56,025 SF BUILDING
ON ±9.15 ACRES**



The information and images contained herein are from sources deemed reliable. However, Metro Commercial Real Estate, Inc. makes no representation whatsoever as to their accuracy or authenticity. Images shown may be modified for illustrative purposes. Images may be out-of-date and not current.3.30.21

**700 YORK ROAD
WARMINSTER, PA**



SITE

AVAILABLE
±56,025 SF BUILDING
ON ±9.15 ACRES



PYLON

YORK ROAD 36,985 VPD

263



700 YORK ROAD
WARMINSTER, PA



The information and images contained herein are from sources deemed reliable. However, Metro Commercial Real Estate, Inc. makes no representation whatsoever as to their accuracy or authenticity. Images shown may be modified for illustrative purposes. Images may be out-of-date and not current. 3.30.21

