



2,600 SF
Available for Lease

**RETAIL/FITNESS/DAYCARE/
TUTORING/OFFICE/MEDICAL/
LOUNGE/GALLERY**

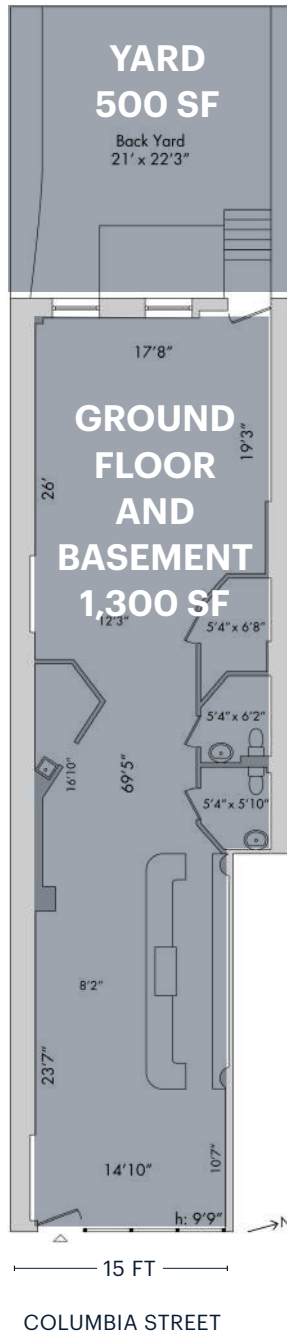
200 COLUMBIA STREET

Between Degraw and Sackett Streets

WATERFRONT COBBLE HILL
BROOKLYN | NY

RIPCO
REAL ESTATE

SPACE DETAILS



LOCATION

Southwest side of Columbia Street
between Degraw and Sackett Streets

SIZE

Ground Floor	1,300 SF
Basement	1,300 SF
Yard	500 SF

FRONTAGE

Columbia Street	15 FT
-----------------	-------

TERMS

Negotiable

TAXES/CAM

Over base year. Utilities metered

POSSESSION

Immediate

NEIGHBORS

Veksler, Brooklyn General Store, Il Vignetto, Mazzat, Alma, Union Max, Longshoreman, Tesla

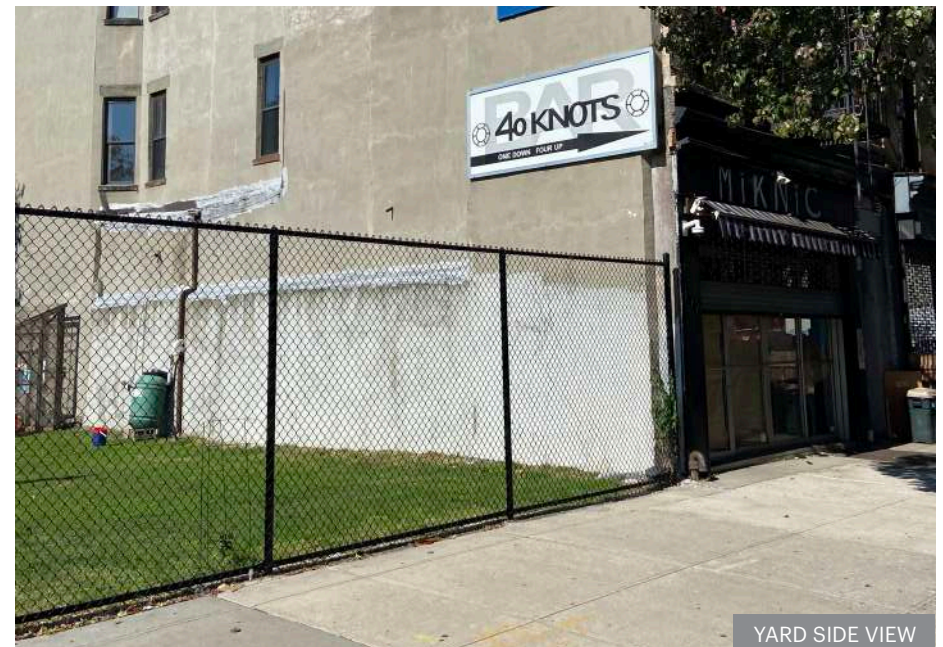
COMMENTS

Wonderful neighborhood retail adjacent to corner park and playspace
All quality uses considered

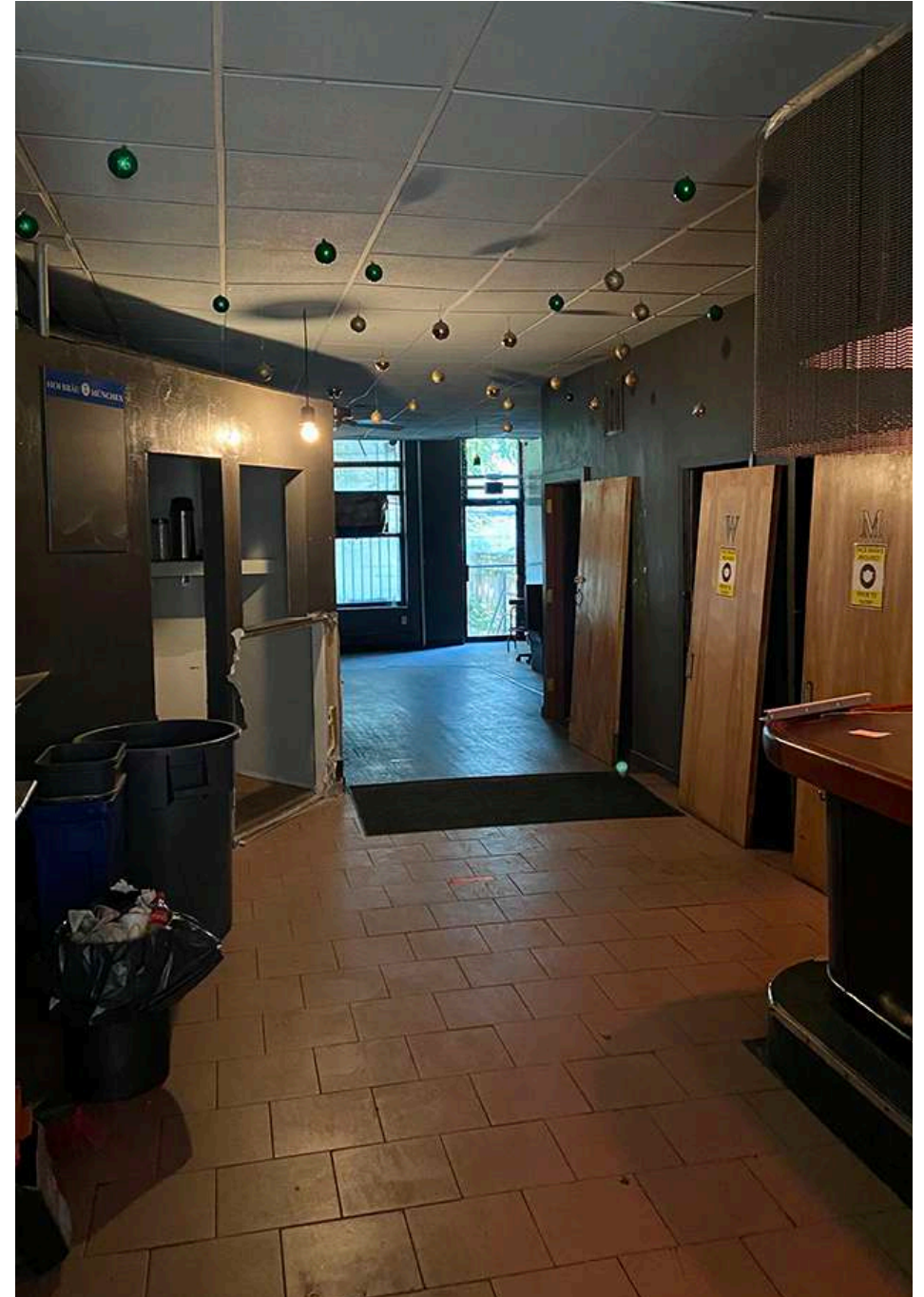
TRANSPORTATION

2019 Ridership Report

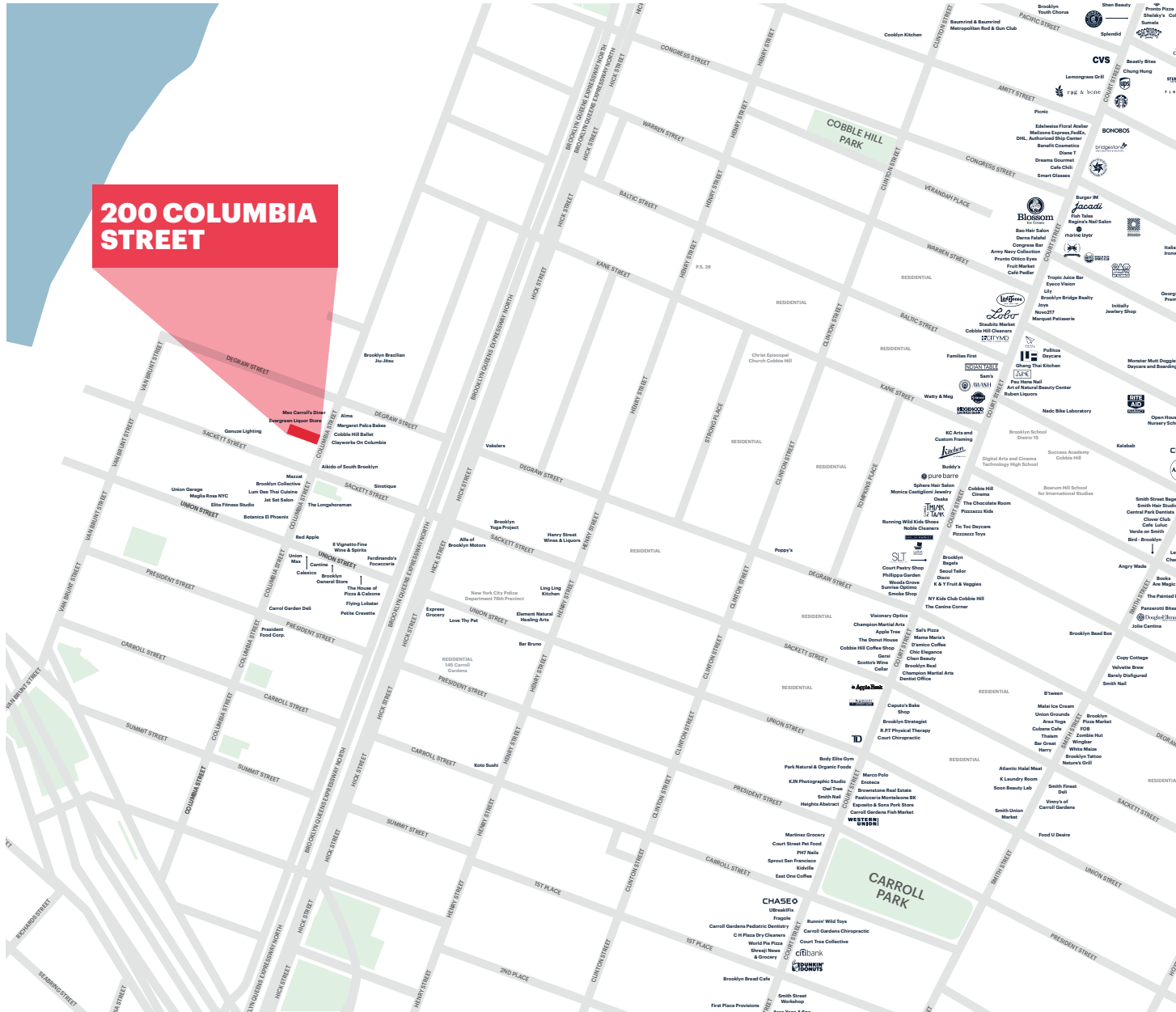
Columbia St/Sackett St	
Annual	2,691,498
Weekday	8,438
Weekend	10,013



ADDITIONAL PHOTOS



AREA RETAIL MAP



200 COLUMBIA STREET

CONTACT EXCLUSIVE AGENTS

JASON PENNINGTON
 jpennington@ripcony.com
 718.233.6565

ALEX BEARD
 abeard@ripcony.com
 718.233.6565



32 Court Street
 10th Floor
 Brooklyn, NY 11201
 718.233.6565

Please visit us at ripcony.com for more information

This information has been secured from sources we believe to be reliable, but we make no representations as to the accuracy of the information. References to square footage are approximate. Buyer must verify the information and bears all risk for any inaccuracies.