



## RETAIL SPACE

# MAMARONECK, NY

151 MAMARONECK AVENUE

### SIZE

Lower Level: 3,500 SF (with windows)

### ASKING RENT

Upon Request

### CO-TENANTS

Triplemint, CKO Boxing, Digital Arts Experience

### NEIGHBORS

Emelin Theatre, Mister Chen, Boiano Bakery, Salsa Fresca Mexican Grill, Smashburger, AT&T, Hand & Stone, Green Life, Red Plum, M&T Bank, New York Sports Club, Chase Bank, Dunkin', Wells Fargo Bank, Bach to Rock, Pinot's Palette

### COMMENTS

Excellent visibility with high walking traffic location

Dedicated parking in rear

High ceilings and elevator access

Conveniently located to Metro-North's Rail Road Mamaroneck Station and I-95

Strong local demographics

## CONTACT EXCLUSIVE AGENTS

### LISA DANIEL

ldaniel@ripcony.com  
203.302.1701

### JEFFREY L. NABLE

jnable@ripcony.com  
203.302.1701

**RIPCO**  
REAL ESTATE

100 Jericho Quadrangle  
Suite 120  
Jericho, NY 11753  
516.933.8880

Please visit us at [ripcony.com](http://ripcony.com) for more information

This information has been secured from sources we believe to be reliable, but we make no representations as to the accuracy of the information. References to square footage are approximate. Buyer must verify the information and bears all risk for any inaccuracies.

**ELEVATION**



**AVAILABLE  
LOWER LEVEL**

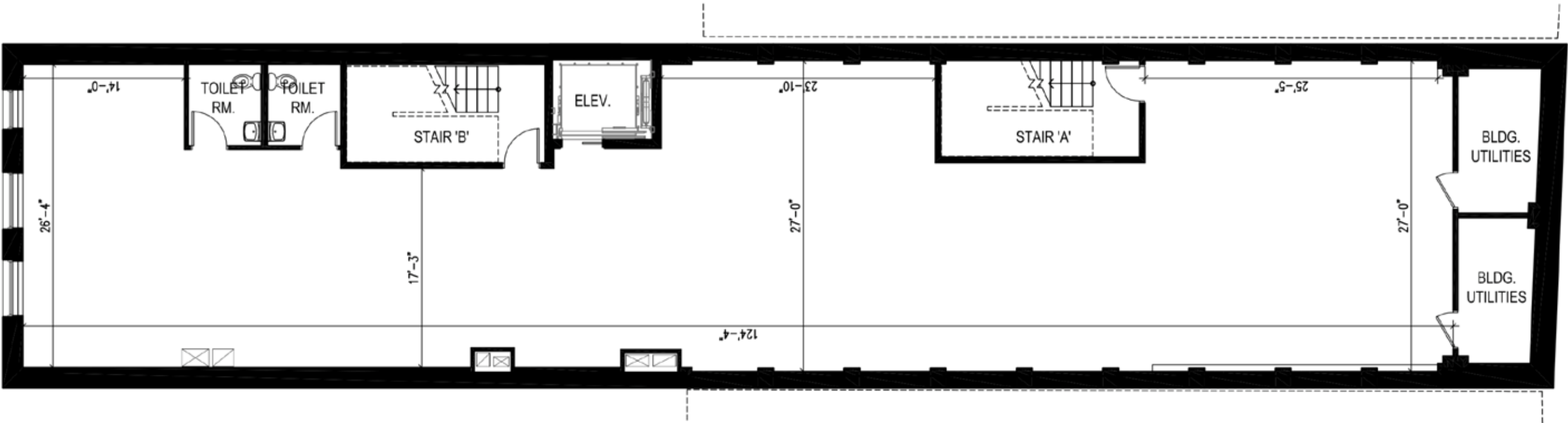
**ELEVATOR  
CORRIDOR  
TO UPPER &  
LOWER LEVEL  
RETAIL SPACES**



**FLOOR PLAN - SIDE VIEW**



**FLOOR PLAN - LOWER LEVEL**



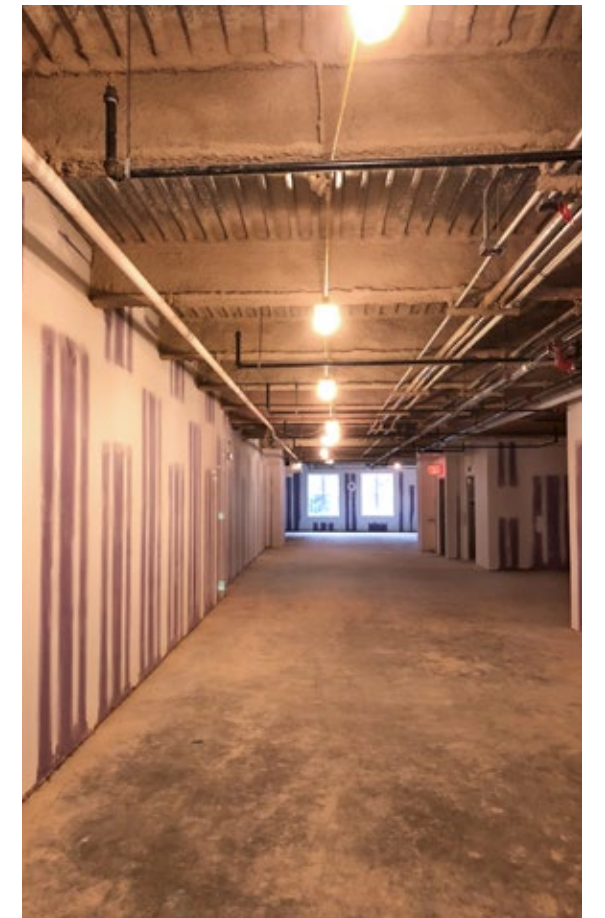
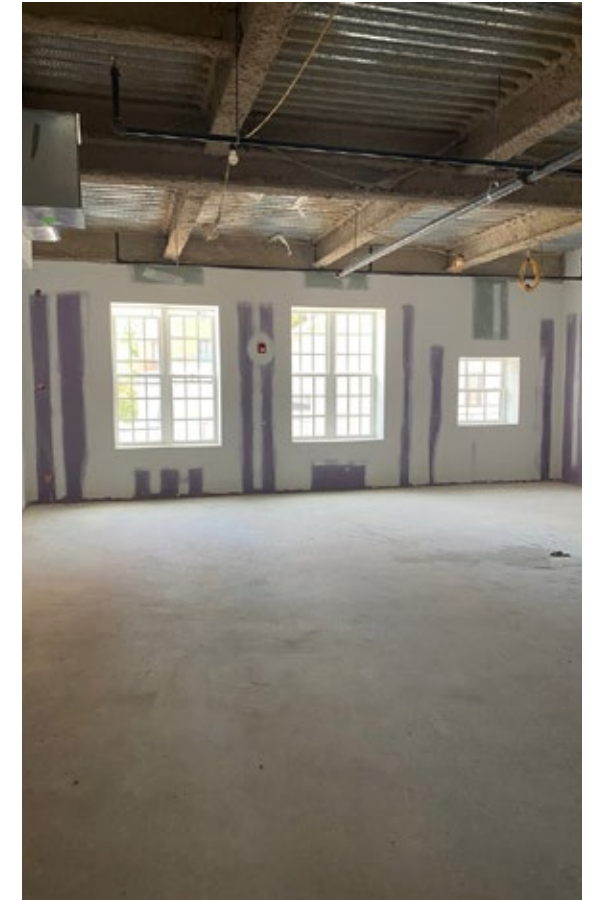
MAMARONECK AVENUE

# ADDITIONAL PHOTOS

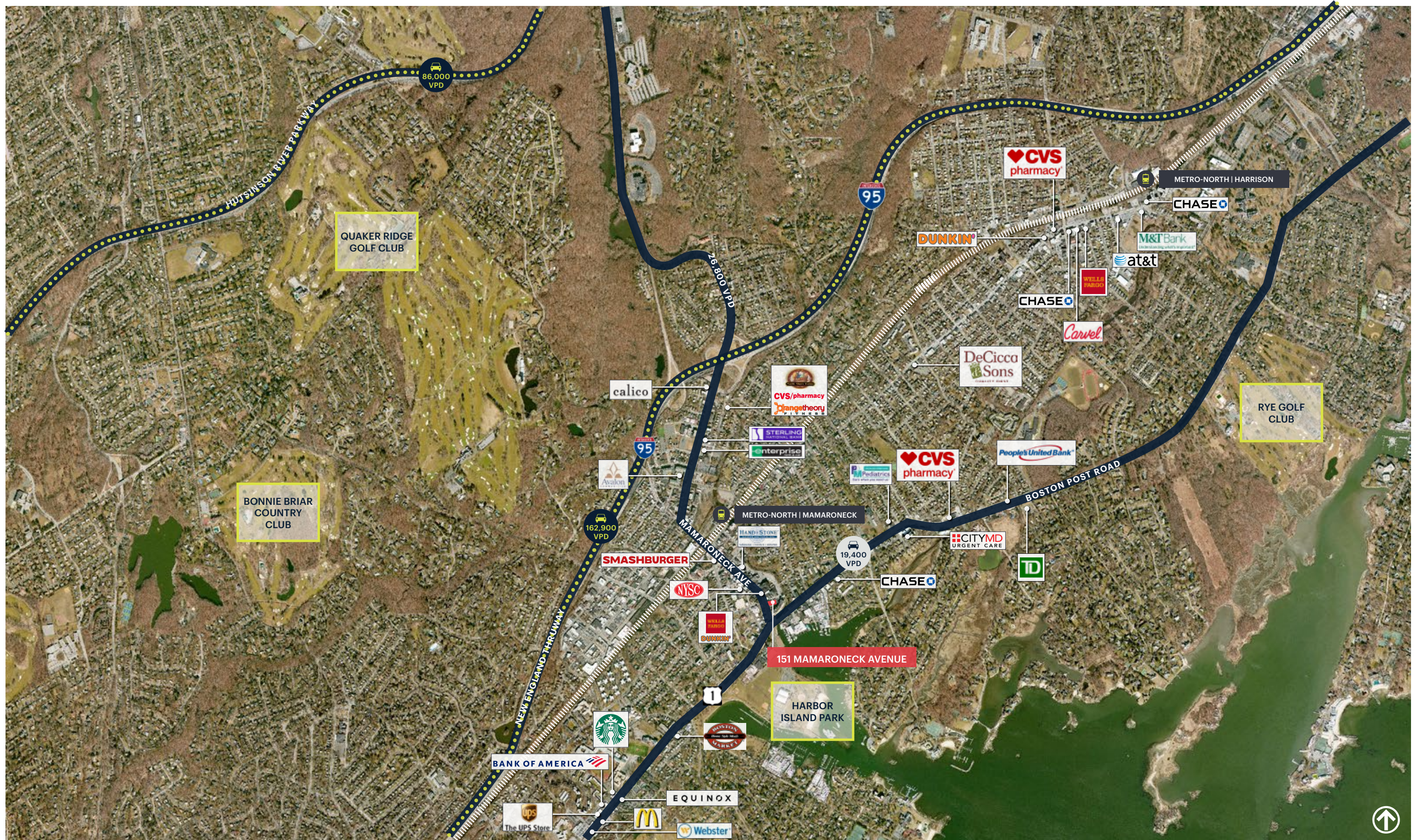
## REAR ENTRANCE



## FRONT ENTRANCE



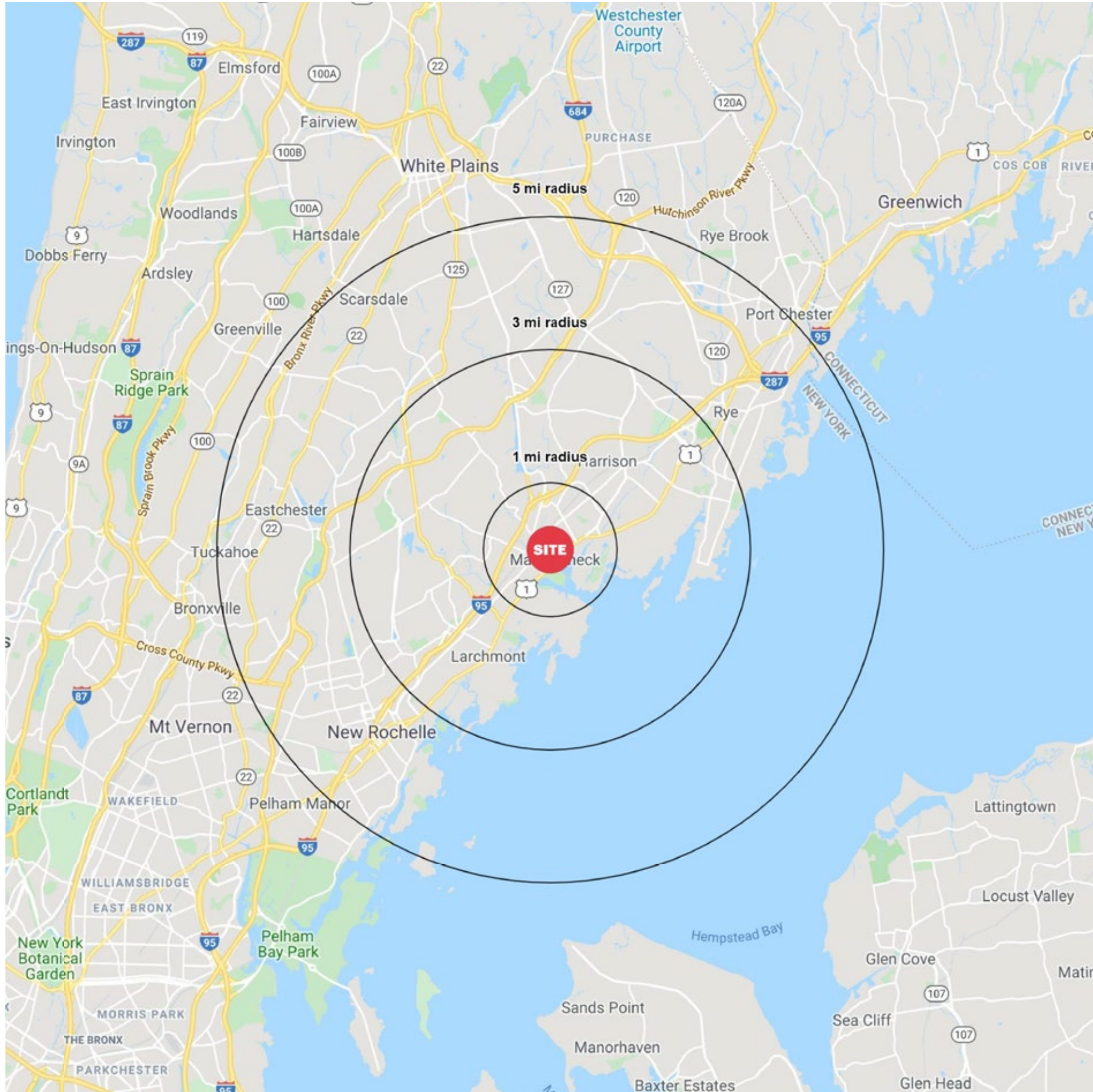
# MARKET AERIAL



**AERIAL**



# AREA DEMOGRAPHICS



151 MAMARONECK AVENUE MAMARONECK, NEW YORK

## 1 MILE RADIUS

### POPULATION

19,078

### HOUSEHOLDS

6,872

### AVERAGE HOUSEHOLD INCOME

\$183,932

### MEDIAN HOUSEHOLD INCOME

\$122,032

### COLLEGE GRADUATES (Bachelor's +)

7,477 - 55.7%

### TOTAL BUSINESSES

1,395

### TOTAL EMPLOYEES

10,050

### DAYTIME POPULATION (w/ 16 yr +)

16,193

## 3 MILE RADIUS

### POPULATION

79,843

### HOUSEHOLDS

28,487

### AVERAGE HOUSEHOLD INCOME

\$256,908

### MEDIAN HOUSEHOLD INCOME

\$162,581

### COLLEGE GRADUATES (Bachelor's +)

36,651 - 65.8%

### TOTAL BUSINESSES

4,530

### TOTAL EMPLOYEES

40,317

### DAYTIME POPULATION (w/ 16 yr +)

66,101

## 5 MILE RADIUS

### POPULATION

246,222

### HOUSEHOLDS

87,034

### AVERAGE HOUSEHOLD INCOME

\$212,556

### MEDIAN HOUSEHOLD INCOME

\$139,313

### COLLEGE GRADUATES (Bachelor's +)

99,430 - 58.1%

### TOTAL BUSINESSES

13,276

### TOTAL EMPLOYEES

120,637

### DAYTIME POPULATION (w/ 16 yr +)

201,428

# AREA DEMOGRAPHICS

