

# HAMILTON CROSSINGS

ROUTE 222 BYPASS & KROCKS ROAD, TREXLERTOWN, PA

LAST SPACE AVAILABLE: ±3,100 SF ENDCAP WITH OUTDOOR SEATING

DEVELOPED BY



THE GOLDENBERG GROUP

TCH Development LLC



## LEASING CONTACTS

### GLENN MARVIN

office 610.825.5222  
direct 610.260.2674  
gmarvin@metrocommercial.com

### STEVE NIGGEMAN

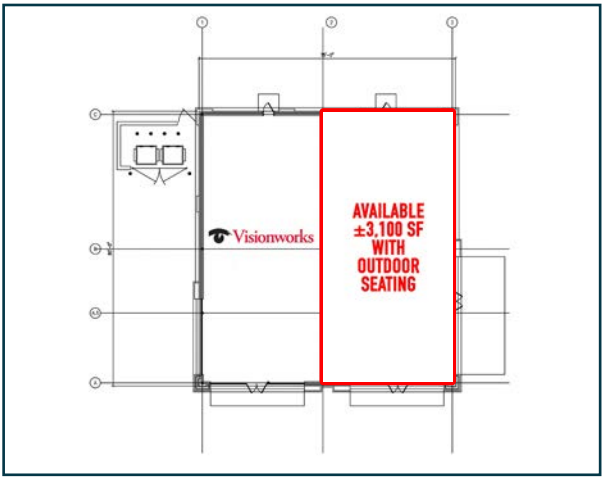
office 610.825.5222  
direct 610.260.2667  
sniggeman@metrocommercial.com

### VALERIE PETTINE

office 610.825.5222  
direct 610.260.2661  
vpettine@metrocommercial.com



**JOIN**



The information and images contained herein are from sources deemed reliable. However, Metro Commercial Real Estate, Inc. makes no representation whatsoever as to their accuracy or authenticity. Images shown may be modified for illustrative purposes. Images may be out-of-date and not current. 3.21.17

# ROUTE 222 BYPASS & KROCKS ROAD TREXLERTOWN, PA





The information and images contained herein are from sources deemed reliable. However, Metro Commercial Real Estate, Inc. makes no representation whatsoever as to their accuracy or authenticity. Images shown may be modified for illustrative purposes. Images may be out-of-date and not current. 3.21.17

# ROUTE 222 BYPASS & KROCKS ROAD TREXLERTOWN, PA

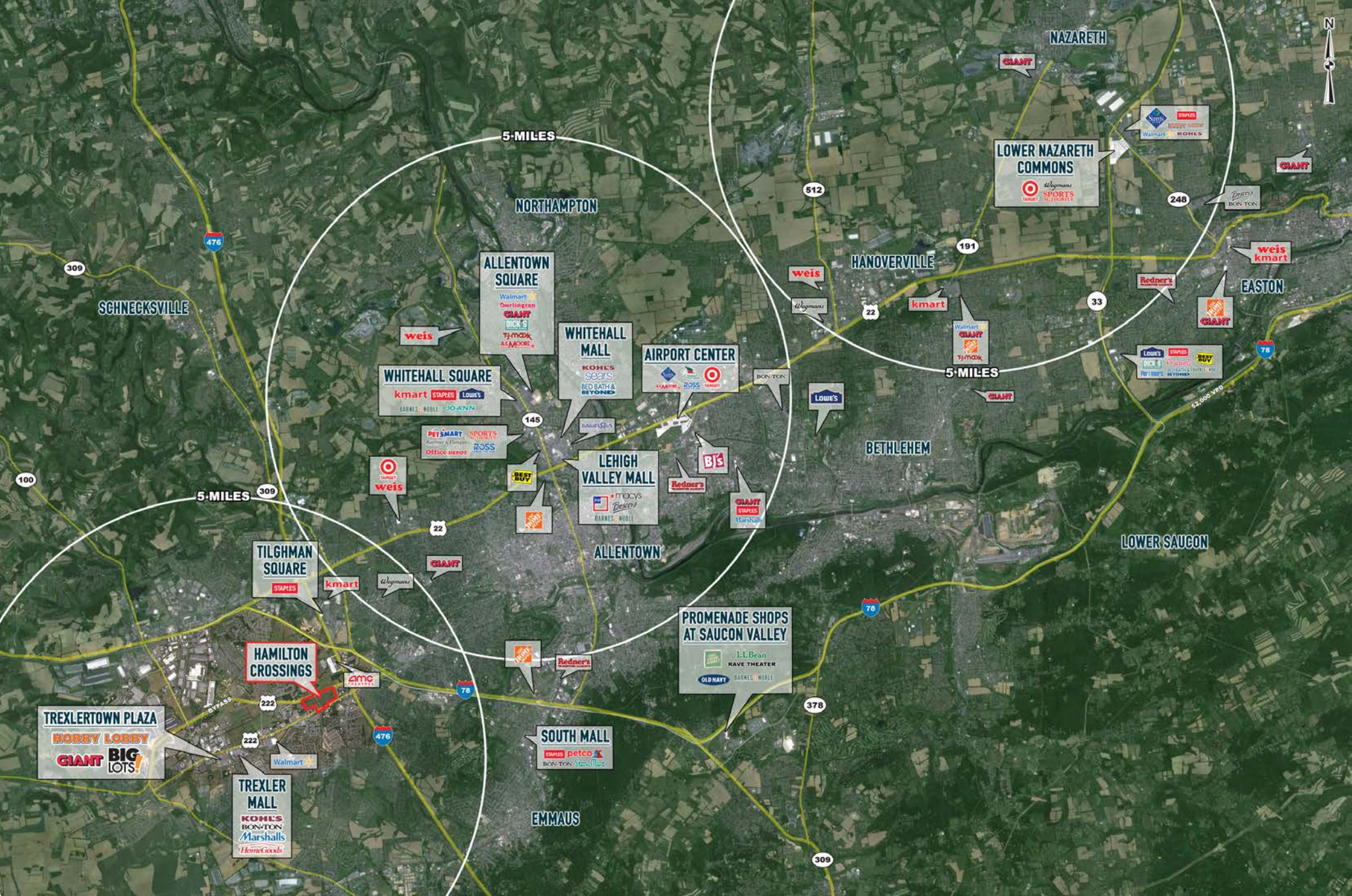




The information and images contained herein are from sources deemed reliable. However, Metro Commercial Real Estate, Inc. makes no representation whatsoever as to their accuracy or authenticity. Images shown may be modified for illustrative purposes. Images may be out-of-date and not current. 3.21.17

# ROUTE 222 BYPASS & KROCKS ROAD TREXLERTOWN, PA





The information and images contained herein are from sources deemed reliable. However, Metro Commercial Real Estate, Inc. makes no representation whatsoever as to their accuracy or authenticity. Images shown may be modified for illustrative purposes. Images may be out-of-date and not current. 3.21.17

# ROUTE 222 BYPASS & KROCKS ROAD TREXLERTOWN, PA





# Executive Summary

Trexlerstown, Pennsylvania 3  
Trexlerstown, Pennsylvania  
Rings: 3, 5, 7 mile radii

Prepared by Esri  
Latitude: 40.55083  
Longitude: -75.59701

	3 miles	5 miles	7 miles
<b>Population</b>			
2000 Population	25,846	59,962	136,406
2010 Population	39,569	80,286	160,533
2015 Population	42,409	84,199	165,117
2020 Population	44,640	87,518	169,241
2000-2010 Annual Rate	4.35%	2.96%	1.64%
2010-2015 Annual Rate	1.33%	0.91%	0.54%
2015-2020 Annual Rate	1.03%	0.78%	0.49%
2015 Male Population	48.8%	48.4%	48.1%
2015 Female Population	51.2%	51.6%	51.9%
2015 Median Age	40.7	43.0	42.1

In the identified area, the current year population is 165,117. In 2010, the Census count in the area was 160,533. The rate of change since 2010 was 0.54% annually. The five-year projection for the population in the area is 169,241 representing a change of 0.49% annually from 2015 to 2020. Currently, the population is 48.1% male and 51.9% female.

### Median Age

The median age in this area is 40.7, compared to U.S. median age of 37.9.

### Race and Ethnicity

2015 White Alone	83.0%	85.1%	81.4%
2015 Black Alone	3.8%	3.5%	5.3%
2015 American Indian/Alaska Native Alone	0.2%	0.1%	0.3%
2015 Asian Alone	8.5%	7.2%	4.7%
2015 Pacific Islander Alone	0.0%	0.0%	0.0%
2015 Other Race	2.2%	2.0%	5.7%
2015 Two or More Races	2.2%	2.0%	2.6%
2015 Hispanic Origin (Any Race)	7.2%	6.6%	13.8%

Persons of Hispanic origin represent 13.8% of the population in the identified area compared to 17.6% of the U.S. population. Persons of Hispanic Origin may be of any race. The Diversity Index, which measures the probability that two people from the same area will be from different race/ethnic groups, is 49.2 in the identified area, compared to 63.0 for the U.S. as a whole.

### Households

2000 Households	9,854	22,638	54,003
2010 Households	14,999	30,835	62,905
2015 Total Households	16,008	32,241	64,396
2020 Total Households	16,798	33,420	65,777
2000-2010 Annual Rate	4.29%	3.14%	1.54%
2010-2015 Annual Rate	1.25%	0.85%	0.45%
2015-2020 Annual Rate	0.97%	0.72%	0.43%
2015 Average Household Size	2.63	2.57	2.49

The household count in this area has changed from 62,905 in 2010 to 64,396 in the current year, a change of 0.45% annually. The five-year projection of households is 65,777, a change of 0.43% annually from the current year total. Average household size is currently 2.49, compared to 2.48 in the year 2010. The number of families in the current year is 43,013 in the specified area.

The information and images contained herein are from sources deemed reliable. However, Metro Commercial Real Estate, Inc. makes no representation whatsoever as to their accuracy or authenticity. Images shown may be modified for illustrative purposes. Images may be out-of-date and not current. 3.21.17



# Executive Summary

Trexlerstown, Pennsylvania 3  
Trexlerstown, Pennsylvania  
Rings: 3, 5, 7 mile radii

Prepared by Esri  
Latitude: 40.55083  
Longitude: -75.59701

	3 miles	5 miles	7 miles
<b>Median Household Income</b>			
2015 Median Household Income	\$81,855	\$79,714	\$64,092
2020 Median Household Income	\$96,891	\$92,990	\$76,775
2015-2020 Annual Rate	3.43%	3.13%	3.68%
<b>Average Household Income</b>			
2015 Average Household Income	\$104,410	\$104,103	\$88,209
2020 Average Household Income	\$120,041	\$118,818	\$100,634
2015-2020 Annual Rate	2.83%	2.68%	2.67%
<b>Per Capita Income</b>			
2015 Per Capita Income	\$39,348	\$40,073	\$34,587
2020 Per Capita Income	\$45,130	\$45,591	\$39,302
2015-2020 Annual Rate	2.78%	2.61%	2.59%

Current median household income is \$64,092 in the area, compared to \$53,217 for all U.S. households. Median household income is projected to be \$76,775 in five years, compared to \$60,683 for all U.S. households

Current average household income is \$88,209 in this area, compared to \$74,699 for all U.S. households. Average household income is projected to be \$100,634 in five years, compared to \$84,910 for all U.S. households

Current per capita income is \$34,587 in the area, compared to the U.S. per capita income of \$28,597. The per capita income is projected to be \$39,302 in five years, compared to \$32,501 for all U.S. households

<b>Housing</b>			
2000 Total Housing Units	10,237	23,471	56,356
2000 Owner Occupied Housing Units	8,297	18,279	39,125
2000 Renter Occupied Housing Units	1,557	4,360	14,878
2000 Vacant Housing Units	383	832	2,353
2010 Total Housing Units	15,803	32,415	66,515
2010 Owner Occupied Housing Units	12,433	24,847	45,502
2010 Renter Occupied Housing Units	2,566	5,988	17,403
2010 Vacant Housing Units	804	1,580	3,610
2015 Total Housing Units	16,487	33,360	67,804
2015 Owner Occupied Housing Units	12,860	25,232	45,103
2015 Renter Occupied Housing Units	3,148	7,008	19,292
2015 Vacant Housing Units	479	1,119	3,408
2020 Total Housing Units	17,160	34,393	69,204
2020 Owner Occupied Housing Units	13,480	26,129	46,097
2020 Renter Occupied Housing Units	3,318	7,291	19,680
2020 Vacant Housing Units	362	973	3,427

Currently, 66.5% of the 67,804 housing units in the area are owner occupied; 28.5%, renter occupied; and 5.0% are vacant. Currently, in the U.S., 55.7% of the housing units in the area are owner occupied; 32.8% are renter occupied; and 11.6% are vacant. In 2010, there were 66,515 housing units in the area - 68.4% owner occupied, 26.2% renter occupied, and 5.4% vacant. The annual rate of change in housing units since 2010 is 0.86%. Median home value in the area is \$244,553, compared to a median home value of \$200,006 for the U.S. In five years, median value is projected to change by 2.81% annually to \$280,870.

The information and images contained herein are from sources deemed reliable. However, Metro Commercial Real Estate, Inc. makes no representation whatsoever as to their accuracy or authenticity. Images shown may be modified for illustrative purposes. Images may be out-of-date and not current. 3.21.17