

270

SOHO, NEW YORK

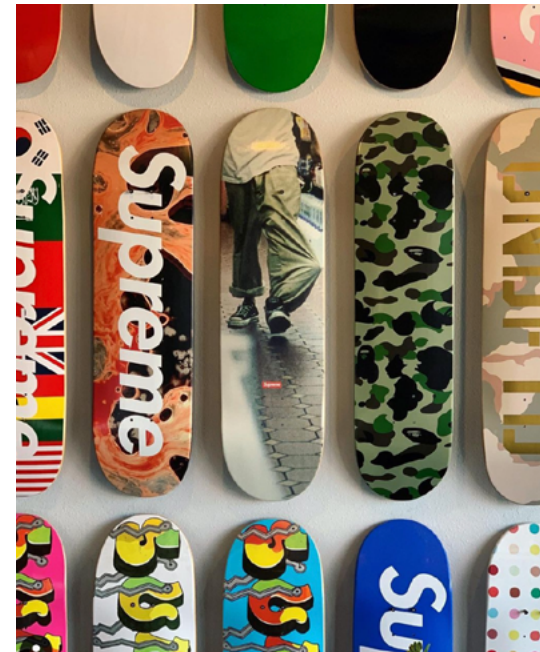
LAFAYETTE.



THE OPPORTUNITY

At the intersection of Prince and Lafayette Streets, 270 Lafayette offers a retailer prominent visibility both by foot and vehicular traffic. The retail has two corners and 20-foot ceilings. The 200,000 square feet of office space directly above the retail provides a built-in consumer base including employees of architect and design firms, entertainment, media, and fashion brands. 270 Lafayette is an amazing opportunity for a brand's first entry into New York City, or an area relocation for a retailer looking to upgrade their visibility in this market.

With its location at the eastern end of SoHo, 270 Lafayette is perfectly positioned alongside neighboring NoLita with close proximity to NoHo, and New York City subway transportation stops on Prince and Spring Streets offer ease of access to and from the site. Plentiful eating and dining options along Lafayette Street are significant contributors to the area footfall and morning-to-evening neighborhood vibe.



AREA STATISTICS

150K

People walk past site daily

+12M

Total subway riders (2019)

54K

Vehicles pass site daily

\$157K

Average HH Income

60K

Area Residents

37.2

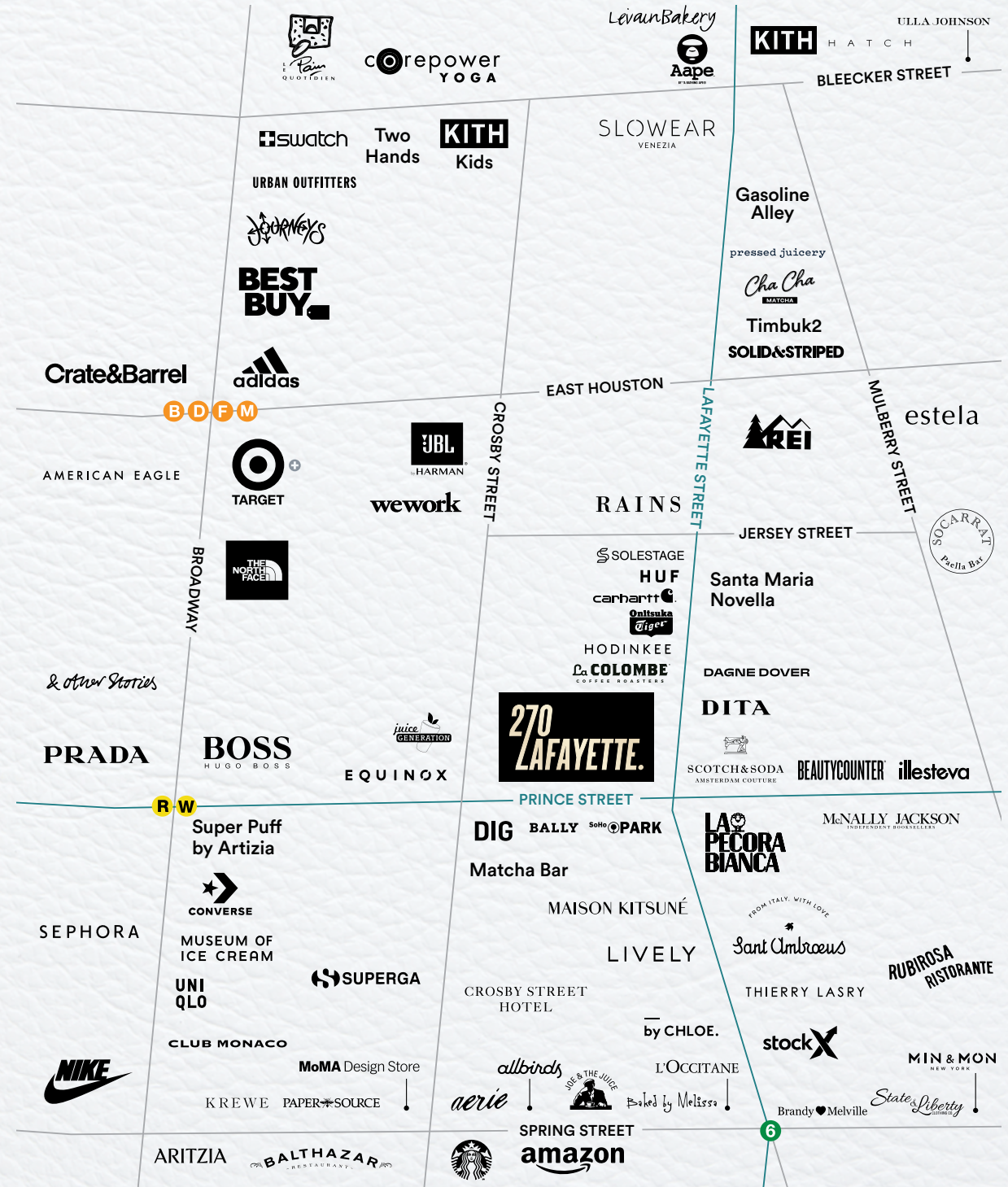
Median Age

534K

Daytime Population

\$1.5B+

Annual Retail Sales



SITE PLAN

A 270 LAFAYETTE STREET

Ground Floor: 2,700 SF

Mezzanine: 200 SF

Basement: 2,124 SF

B 65 PRINCE STREET

Ground Floor: 905 SF

Basement: 546 SF

C 113 CROSBY STREET

Ground Floor: 1,192 SF

Basement: 1,020 SF

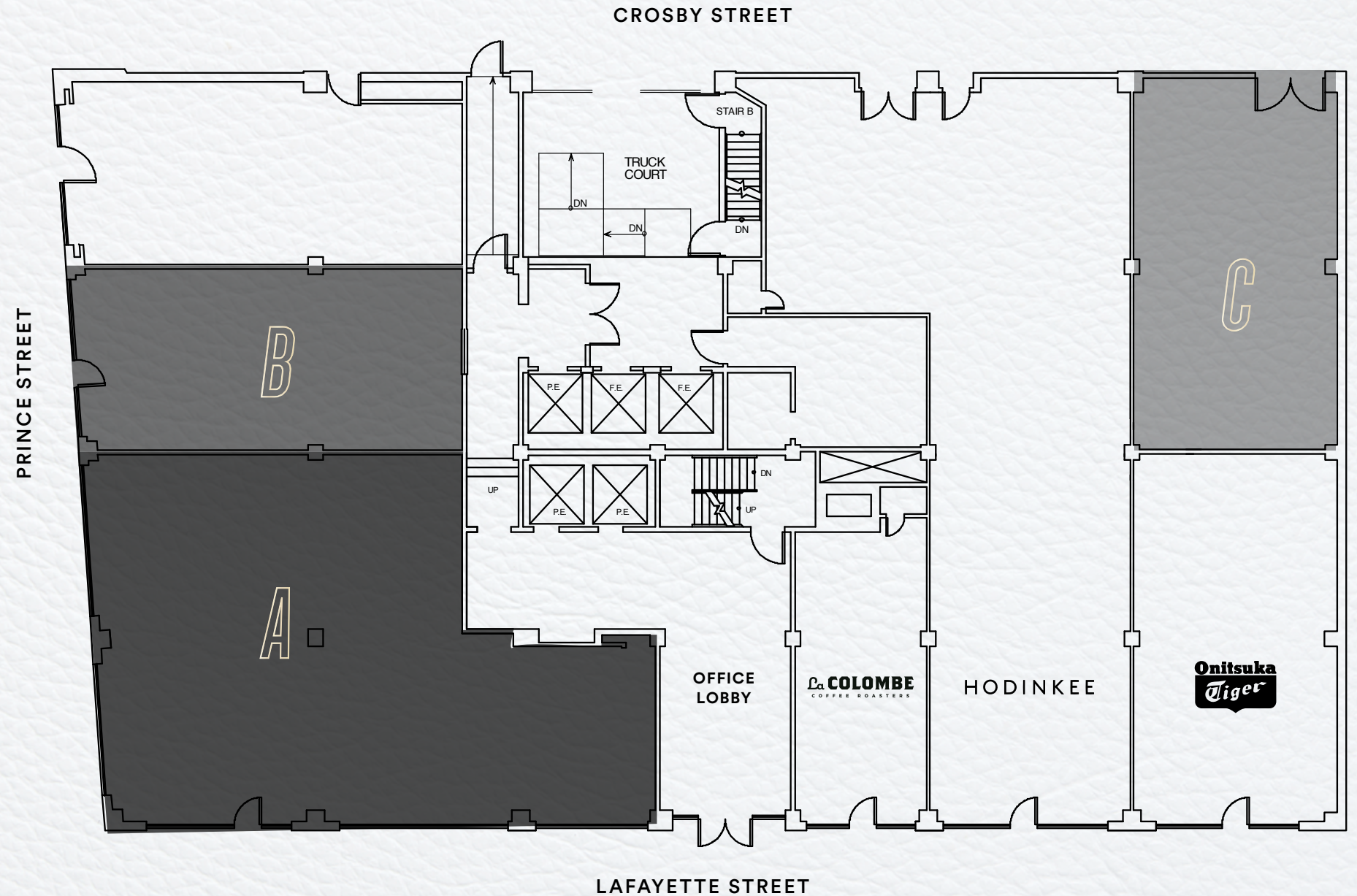
COMMENTS

All spaces have 20 foot ceilings

Spaces can be combined

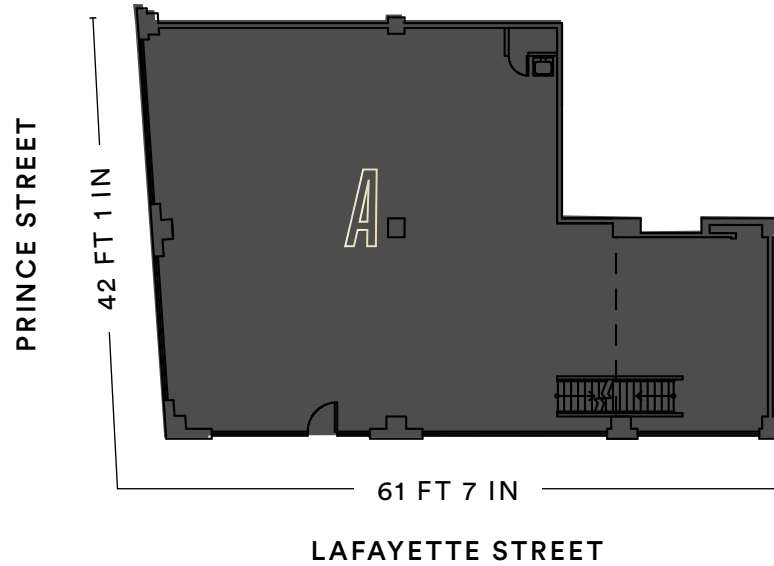
Exterior blade or flag signage
available with Landmark

Preservation Commission approval



PLAN DETAILS

270 LAFAYETTE STREET

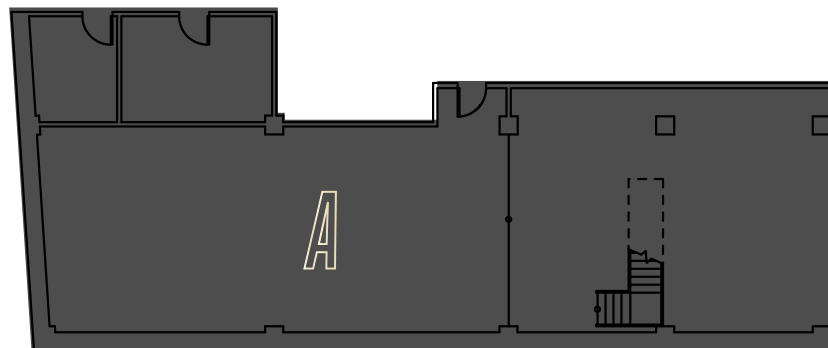


GROUND FLOOR

2,700 SF

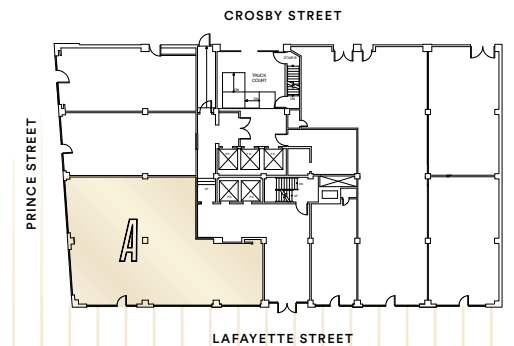
61 FT 7 IN FRONTAGE ON LAFAYETTE STREET

42 FT 1 IN FRONTAGE ON PRINCE STREET



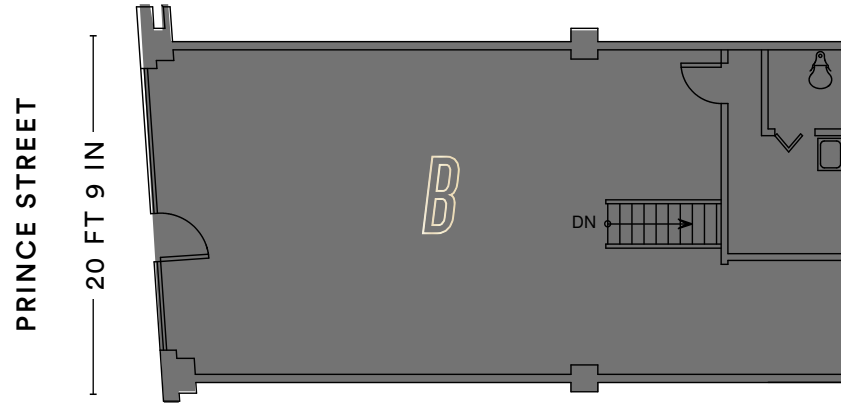
BASEMENT

2,124 SF



PLAN DETAILS

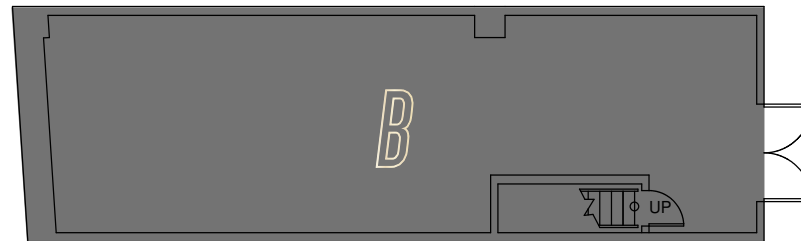
65 PRINCE STREET



GROUND FLOOR

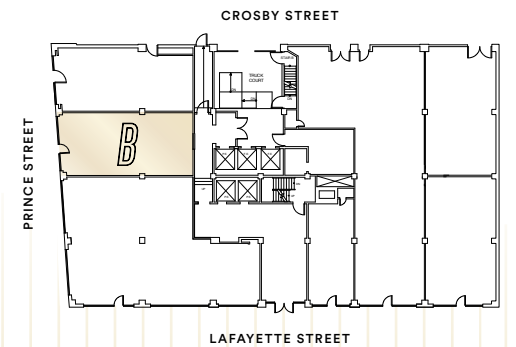
905 SF

20 FT 9 IN FRONTAGE ON PRINCE STREET



BASEMENT

546 SF



PLAN DETAILS

113 CROSBY STREET

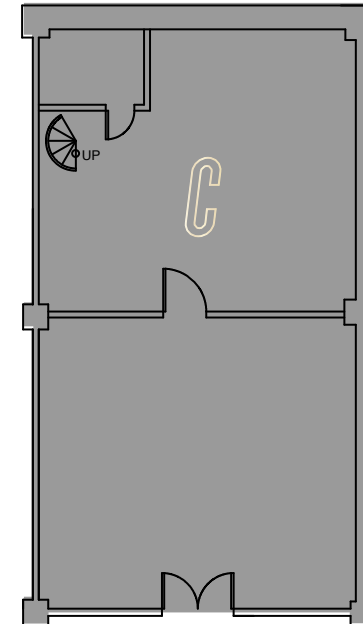
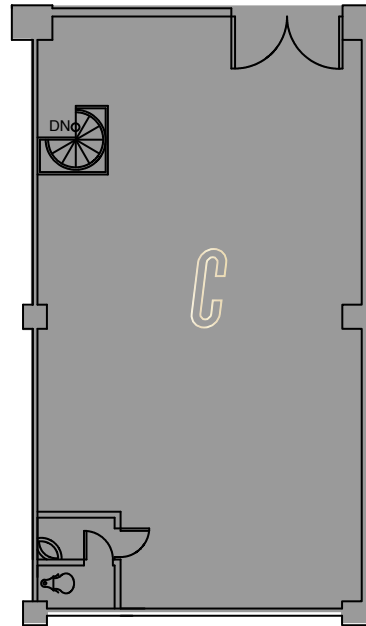


GROUND FLOOR

1,192 SF

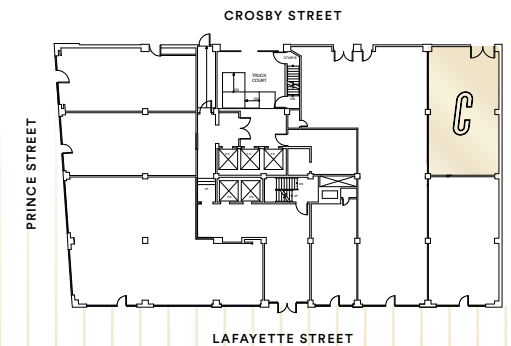
23 FT 9 IN FRONTAGE ON CROSBY STREET

CROSBY STREET
23 FT 9 IN



BASEMENT

1,020 SF



270 LAFAYETTE.

CONTACT EXCLUSIVE AGENTS

RICHARD SKULNIK

rskulnik@ripcony.com

212.750.0756

LINDSAY ZEGANS

lzegans@ripcony.com

646.827.9962

BEN SABIN

bsabin@ripcony.com

646.290.2018

RIPCO
REAL ESTATE

150 East 58th Street
15th Floor
New York, NY 10155
212.750.6565

Please visit us at [ripcony.com](https://www.ripcony.com) for more information

This information has been secured from sources we believe to be reliable, but we make no representations as to the accuracy of the information. References to square footage are approximate. Buyer must verify the information and bears all risk for any inaccuracies.