

RETAIL/OFFICE/MIXED USE

2610 FREDERICK DOUGLASS BLVD

Between West 139th and 140th Streets

HARLEM

NEW YORK | NY

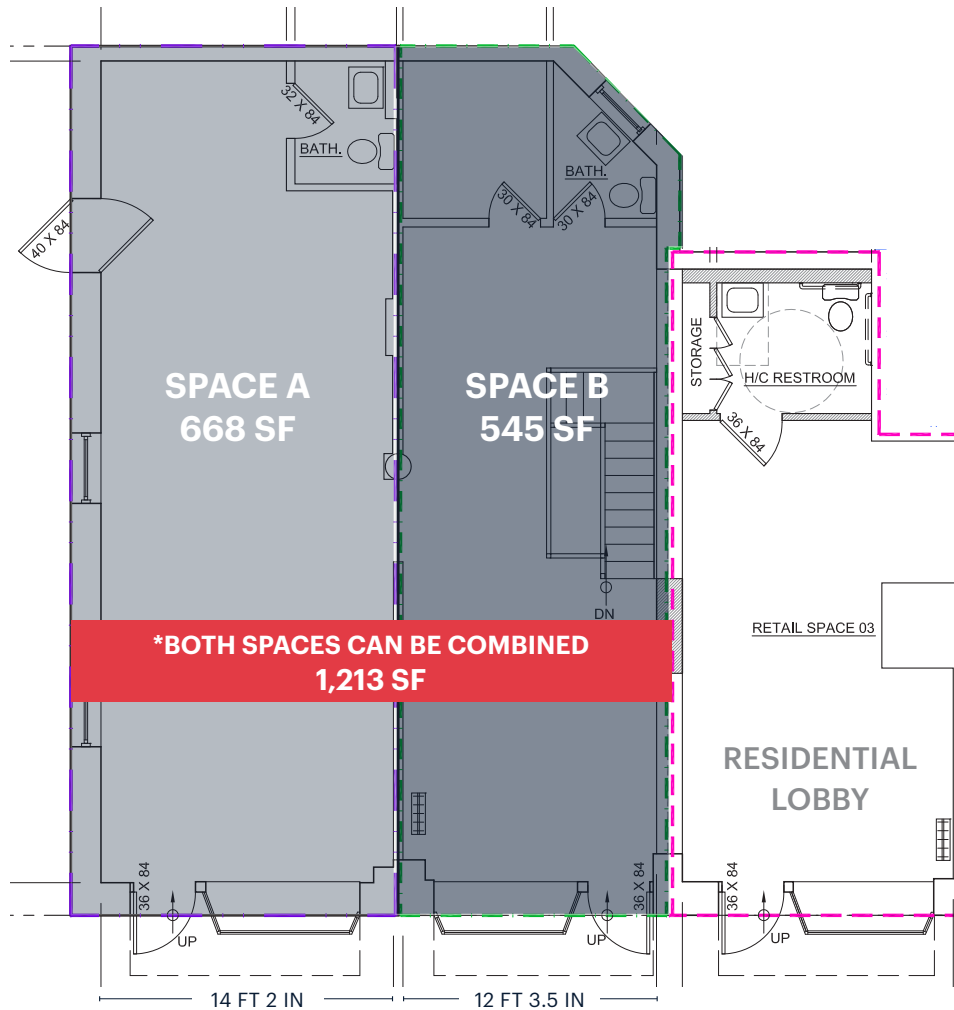
1,213 SF*

*Spaces can be combined
Available for Lease



SPACE DETAILS

GROUND FLOOR



FREDRICK DOUGLASS BLVD (FDB)

LOCATION

Located on Frederick Douglass Boulevard between 139th and 140th Street

SIZE - GROUND FLOOR

Space A	668 SF
Space B	545 SF
Combined	1,213 SF*

ASKING RENT

Upon Request

FRONTAGE ON FREDERICK DOUGLASS BLVD

Space A	14 FT 2 IN
Space B	12 FT 3.5 IN
Combined	26 FT 5.5 IN*

POSSESSION

Immediate

CURRENTLY

Vacant

NEIGHBORS

Londel's, Manhattanville Coffee, The Vanity Box, Key Food Supermarket, Make My Cake, Ponty Bistro

COMMENTS

All quality uses considered
 Join the burgeoning arts and dining scene of Brownstone Harlem
 Located off Harlem's prestigious Striver's Row
 Large bay windows

TRANSPORTATION

2019 Ridership Report

135th Street	B C
Annual	1,743,921
Weekday	5,657
Weekend	5,624

145th Street	A C B D
Annual	7,464,653
Weekday	22,937
Weekend	29,978

AREA RETAIL



CONTACT EXCLUSIVE AGENTS

JASON PENNINGTON

jpennington@ripcony.com

718.233.6565

JESSICA HEDRINGTON

jhedrington@ripcony.com

718.233.6565

RIPCO
REAL ESTATE

32 Court Street
10th Floor
Brooklyn, NY 11201
718.233.6565

Please visit us at ripcony.com for more information

This information has been secured from sources we believe to be reliable, but we make no representations as to the accuracy of the information. References to square footage are approximate. Buyer must verify the information and bears all risk for any inaccuracies.