

**COMMUNITY/DAYCARE/NONPROFIT**

# 531 WEST 159TH STREET

Between Broadway and Amsterdam Avenue

**HARLEM**

NEW YORK | NY

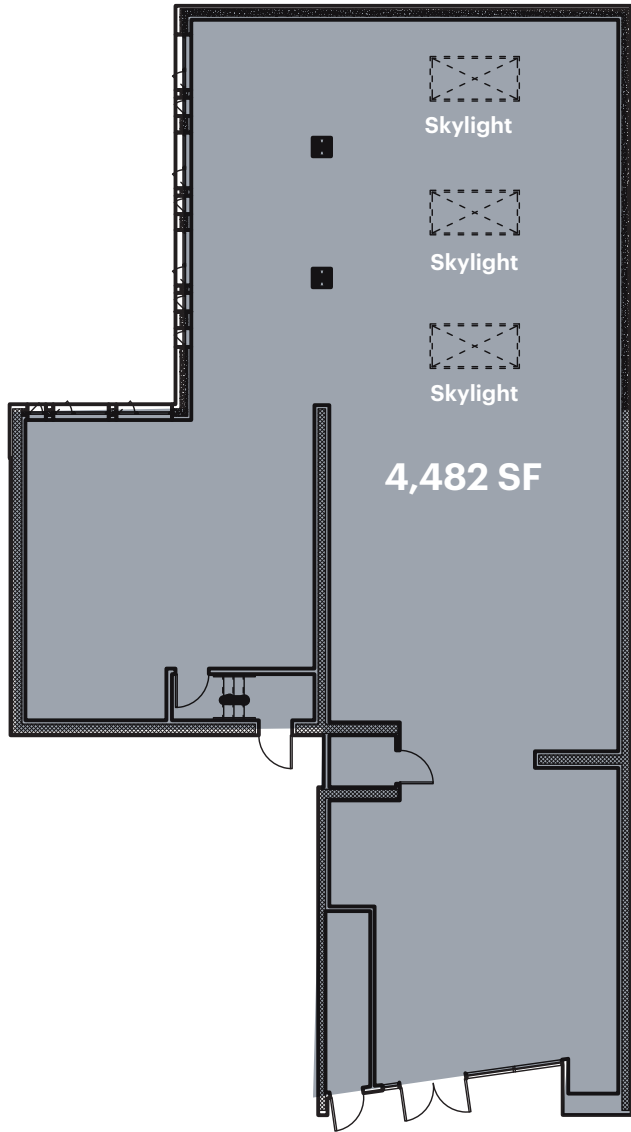
**4,482 SF**  
Available for Lease



**RIPCO**  
REAL ESTATE

# SPACE DETAILS

## GROUND FLOOR



4,482 SF

25 FT

159TH STREET

### LOCATION

North side of 159th Street between Broadway and Amsterdam Avenue

### SIZE

Ground Floor 4,482 SF

### FRONTAGE

West 159th Street 25 FT

### CURRENTLY

Vacant (New Construction)

### POSSESSION

Immediate

### NEIGHBORS

TD Bank, Super Foodtown, Apple Bank, Planet Fitness, Boston Market, Health Rite Pharmacy

### COMMENTS

Nicely situated between two subway lines

Ideally suited for a non profit office, medical or daycare use

One stop from the Columbia University Medical Center

### TRANSPORTATION

2018 Ridership Report

#### 163rd Street

Annual	548,092
Weekday	2,016
Weekend	1,711



#### 157th Street

Annual	3,514,522
Weekday	12,999
Weekend	11,036



## AREA DEMOGRAPHICS



### ESTIMATED DAYTIME POPULATION

0.25 mile	20,862
0.5 mile	74,043
1 mile	198,949

### AVERAGE HOUSEHOLD INCOME

0.25 mile	\$71,478
0.5 mile	\$73,336
1 mile	\$66,951

### TOTAL HOUSEHOLDS

0.25 mile	9,174
0.5 mile	31,438
1 mile	81,430

### TOTAL BUSINESSES

0.25 mile	392
0.5 mile	1,352
1 mile	4,028

### PER CAPITA INCOME

0.25 mile	\$31,583
0.5 mile	\$31,281
1 mile	\$27,580

## CONTACT EXCLUSIVE AGENTS

**JASON PENNINGTON**

jpennington@ripcony.com  
718.233.6565

**JESSICA HEDRINGTON**

jhedrington@ripcony.com  
718.233.6565

**RIPCO**  
REAL ESTATE

32 Court Street  
10th Floor  
Brooklyn, NY 11201  
718.233.6565

Please visit us at [ripcony.com](http://ripcony.com) for more information

This information has been secured from sources we believe to be reliable, but we make no representations as to the accuracy of the information. References to square footage are approximate. Buyer must verify the information and bears all risk for any inaccuracies.