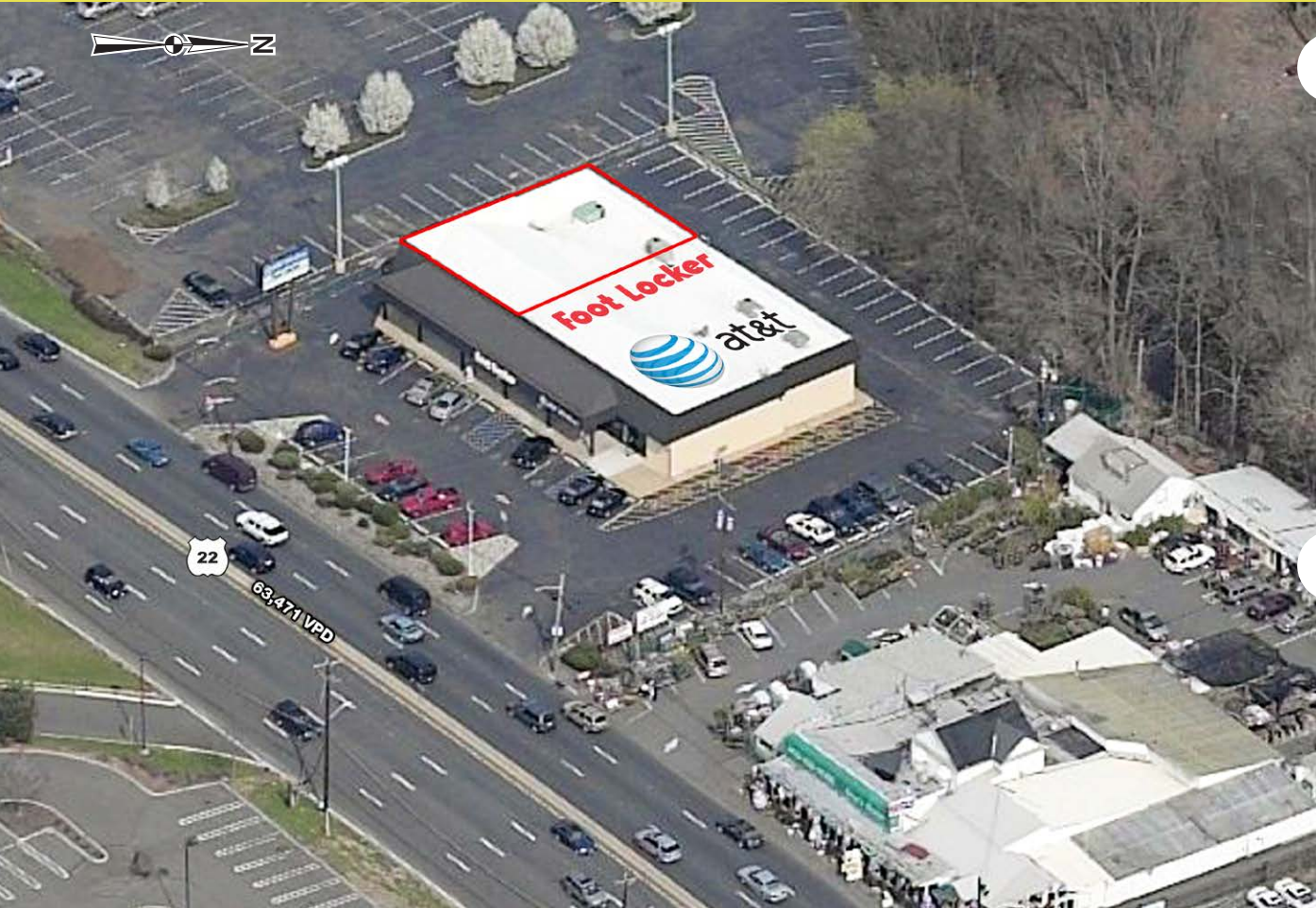


# 1600 ROUTE 22 EAST

WATCHUNG, NJ

±2,770 SF AVAILABLE



## property highlights.

- Total GLA: ±9,000 SF
- Prime retail space in the heart of the Watchung/North Plainfield trade area
- Excellent highway location with easy access located between the Terill Road and Raymond Avenue turn-arounds



## stats.

2013 DEMOGRAPHICS*	1 MILE	3 MILES	5 MILES
EST. POPULATION	15,566	111,564	248,615
EST. HOUSEHOLDS	5,443	37,115	85,109
EST. AVG. HH INCOME	\$93,594	\$120,405	\$134,665

ROUTE 22 TRAFFIC COUNT: 63,471 VPD \*AGS 2013



**METRO**  
COMMERCIAL  
REAL ESTATE, INC

metrocommercial.com | PHILADELPHIA | PLYMOUTH MEETING | MOUNT LAUREL

## get in touch.

**BRENT BARBEHENN**

office 856.866.1900

direct 856.222.3036

bbarbehenn@metrocommercial.com



AVAILABLE  
±2,770 SF  
40' x 69'

PYLON

22

63,471 VPD

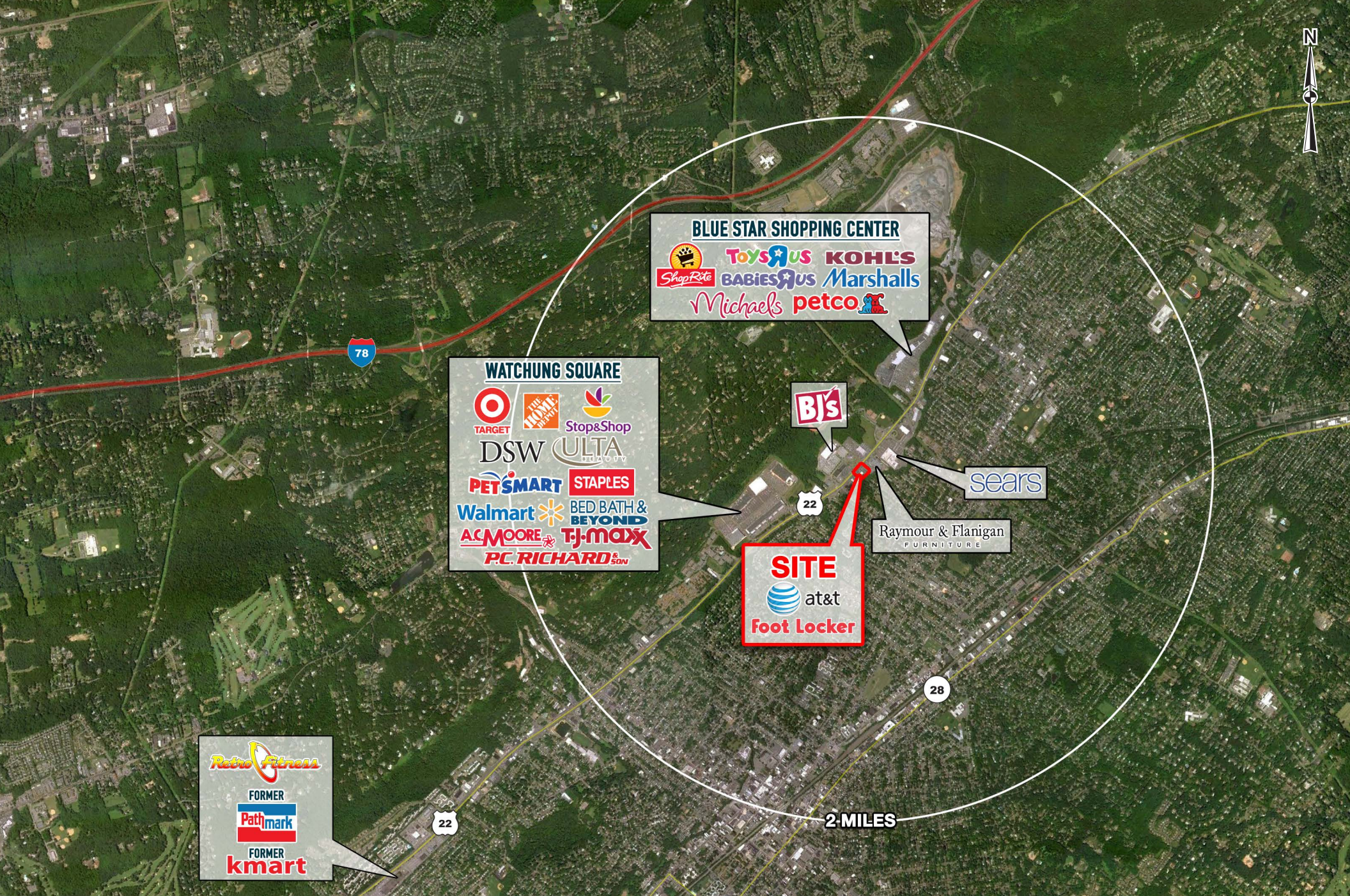
Foot Locker  
at&t

1600 ROUTE 22 EAST  
WATCHUNG, NJ



The information and images contained herein are from sources deemed reliable. However, Metro Commercial Real Estate, Inc. makes no representation whatsoever as to their accuracy or authenticity. Images shown may be modified for illustrative purposes. Images may be out-of-date and not current. 7-20-15





The information and images contained herein are from sources deemed reliable. However, Metro Commercial Real Estate, Inc. makes no representation whatsoever as to their accuracy or authenticity. Images shown may be modified for illustrative purposes. Images may be out-of-date and not current. 7-20-15

1600 ROUTE 22 EAST  
WATCHUNG, NJ