

RETAIL/RESTAURANT/MEDICAL/OFFICE/EDUCATIONAL

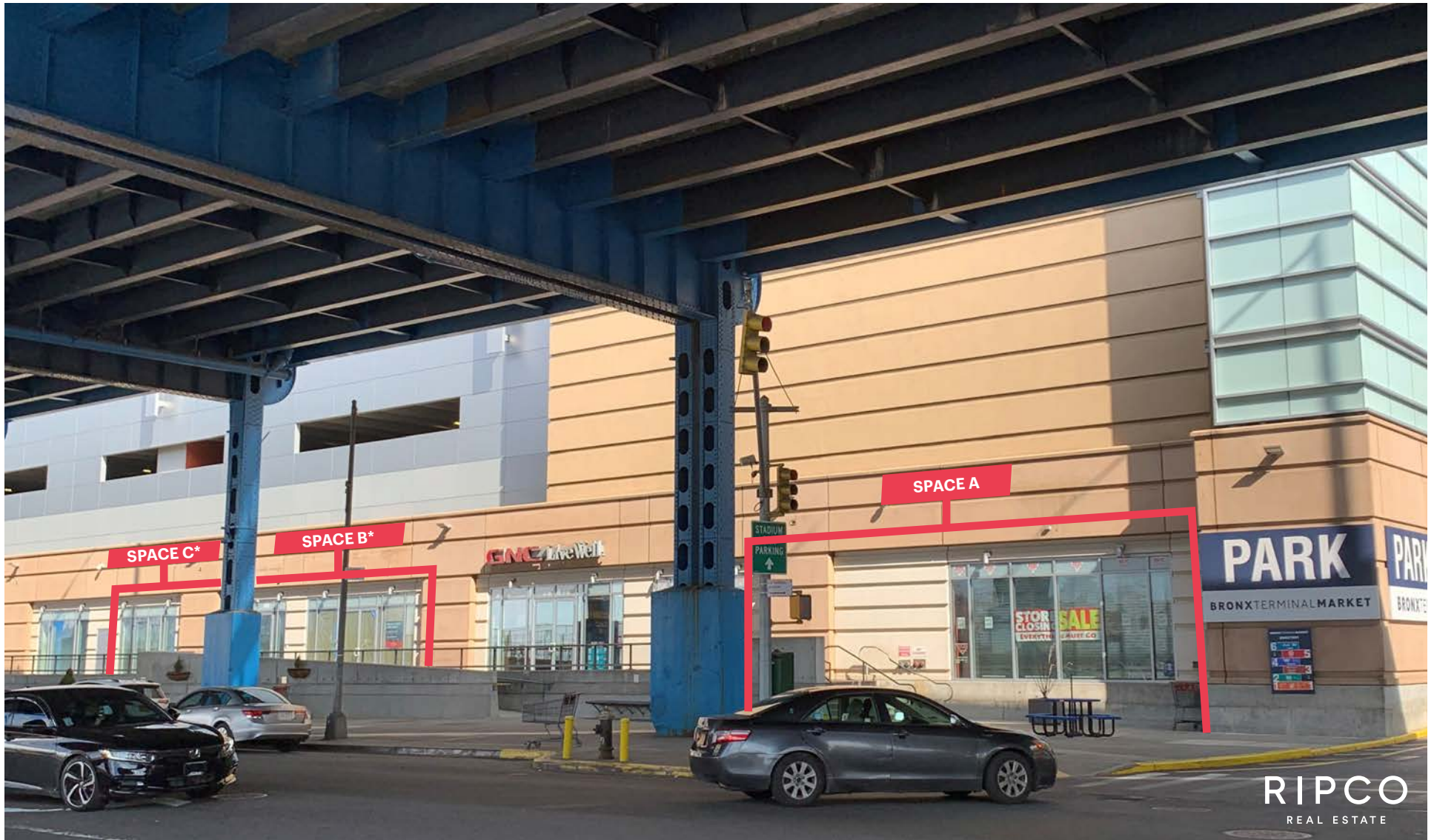
BRONX TERMINAL MARKET

Northwest Corner of 610 Exterior Street, Between East 150th and East 151st Streets

CONCOURSE VILLAGE

BRONX | NEW YORK

Up to
5,050 SF
Available for Lease



SPACE DETAILS

LOCATION

Northwest Corner of 610 Exterior Street
Between East 150th and East 151st Streets

SIZE

Ground Floor

Space A	4,584 SF
Space B	2,013 SF*
Space C	3,037 SF*

Total Up to 5,050 SF

*Spaces can be combined

FRONTAGE

on Exterior Street

Space A	58 FT
Space B	29 FT
Space C	31 FT

FORMERLY

Space A	BX Sports
Space B	Chase Bank
Space C	Feel Beauty

PARKING

2,600 spaces in a 6-level parking structure,
flanked by two retail building structures

ASKING RENT

Upon Request

NEIGHBORS

BJ's Wholesale Club, Food Bazaar (coming soon),
Home Depot, Bed Bath & Beyond, Marshalls, Target,
Michael's Arts & Crafts, Applebee's, Raymour &
Flanigan, Marisco Centro, Harlem Furniture,
Burlington Coat Factory, Best Buy, T-Mobile, AT&T,
GNC, GameStop, Skechers

COMMENTS

Located 1/2 mile from Yankee Stadium

Direct access to Exits 4, 5 & 6 from the Major Deegan Expressway

Walking distance to 149th St Grand Concourse subway stop (2,4,5 trains)

Hostos College open in the center

The 13,000 SF Bronx Children's Museum, located on Exterior Street, serves
75,000 kids annually

Bronx Point (coming 2022) is an L&M Development project located directly
across Exterior Street and will have 1,045 residential units

TRANSPORTATION

2019 Ridership Report

149th Street

Grand Concourse

2 4 5

Annual	3,931,908
Weekday	12,960
Weekend	11,647

Bx13

13

Annual	3,157,715
Weekday	9,754
Weekend	12,355

161st Street

Yankee Stadium

B D 4

Annual	8,254,928
Weekday	25,641
Weekend	31,627

This architectural site plan illustrates the proposed development for the Bronx Children's Museum and Regal Cinemas. The plan is divided into several key areas:

- Regal Cinemas:** Located in the upper left, this section is designated as the "FUTURE HOME OF BRONX POINT 1,045 APARTMENTS". It includes a "60,000 SF OF INTERACTIVE MUSEUM EXPERIENCE" and a "REGAL CINEMAS" logo.
- Waterfront Park:** Situated to the right of the Regal Cinemas, this area is labeled "WATERFRONT PARK" and "75,000 KIDS ANNUALLY". It features the "BRONX CHILDREN'S MUSEUM" logo.
- Exterior Street:** A major thoroughfare running horizontally across the middle of the plan, labeled "EXTERIOR STREET".
- Garage Level 1 (G-1):** A large parking area labeled "GARAGE LEVEL 1 (G-1) 364 SPACES (20 Handicapped Accessible)".
- Space A and Space B+C:** Two red-shaded rectangular areas labeled "SPACE A" and "SPACE B+C". A red callout box above them indicates "SPACE B + C COMBINED".
- Other Features:** The plan includes various other details such as "SUBWAY", "Hostos", "Applebees", "LIVING AREA", "HOTEL UTILITIES AND HOTEL SITE AND SERVICE ENTRY", and "HOTEL UTILITIES".

REGAL
CINEMAS

UNIVERSAL HIP HOP MUSEUM



BRONX
CHILDREN'S MUSEUM

HOTEL UTILITIES AND
HOTEL SITE AND
SERVICE ENTRY

EXTERIOR STREET

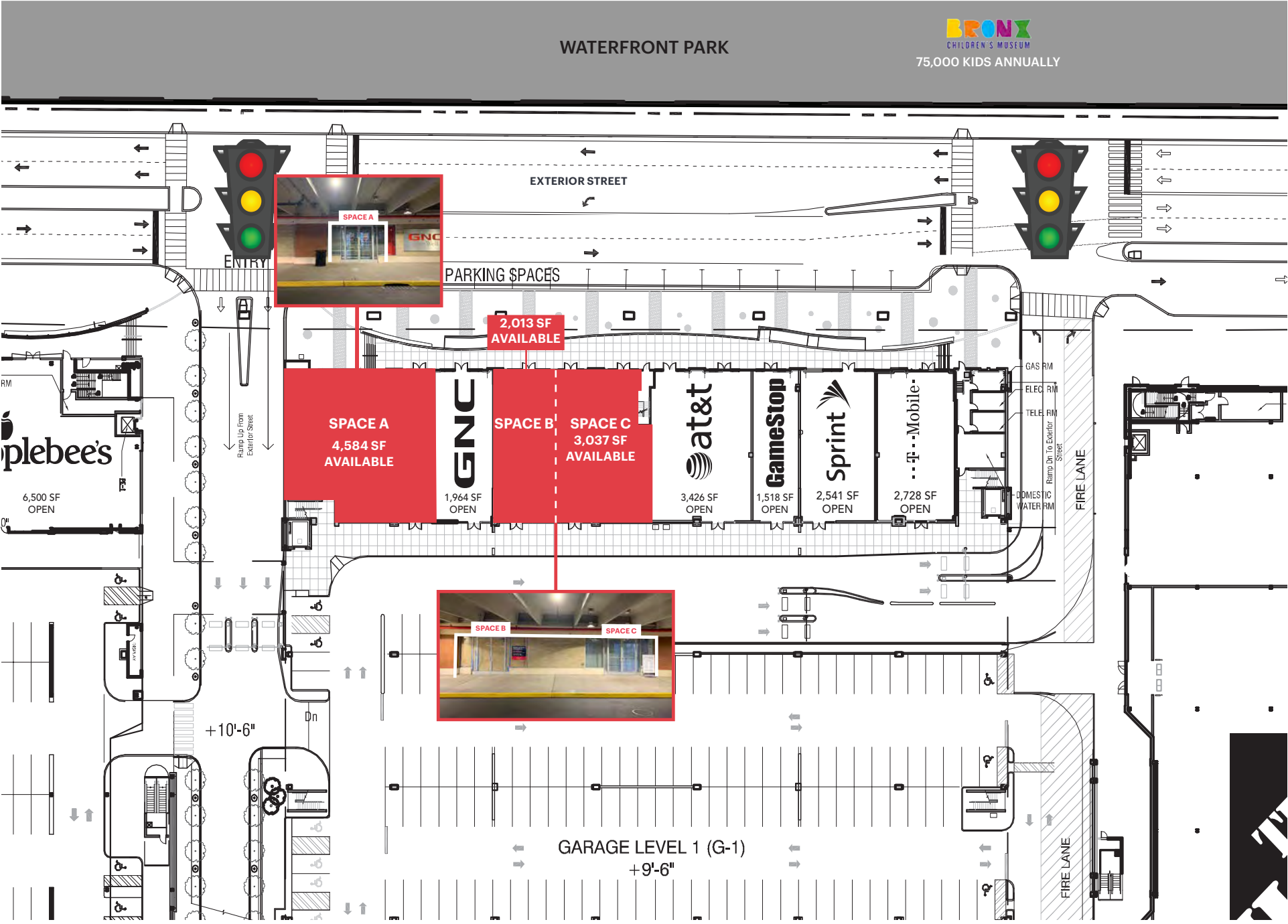
SPACE

SPACE

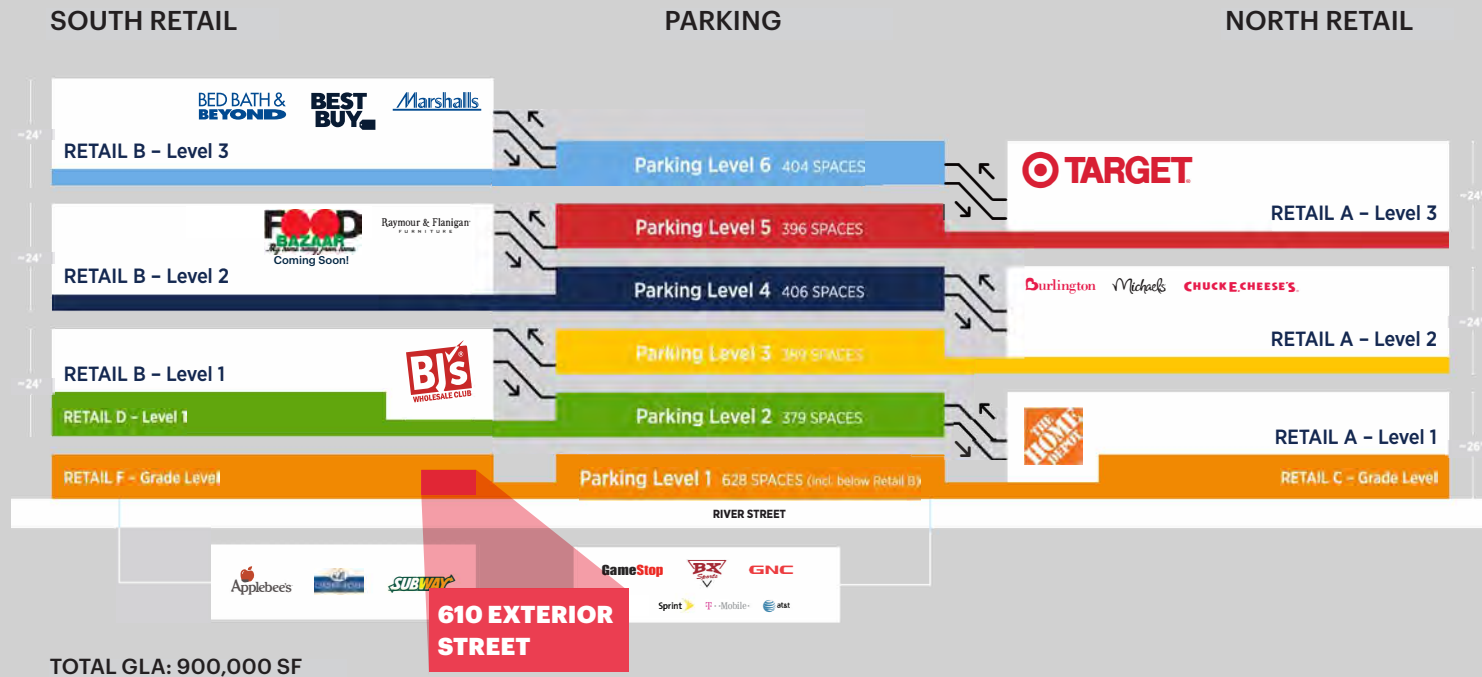
Hotel Site



SITE PLAN



BUILDING LAYOUT + PARKING



CONTACT EXCLUSIVE AGENTS

CHRIS WALTHER

cwalther@ripcony.com
718.233.6565

BEN WEINER

bweiner@ripcony.com
718.233.6565

BRIAN SCHUSTER

bschuster@ripcony.com
516.933.8880